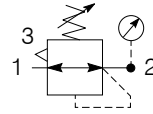


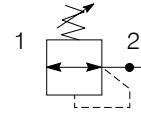
Compact Regulator P32



Symbols



Self relieving regulator with gauge



Non relieving regulator

- Integral 1/4, 3/8 or 1/2 ports (BSPP & NPT)
- Robust but lightweight aluminium construction
- Secondary pressure ranges 2, 4, 8 & 17 bar
- Secondary aspiration plus balanced poppet provides quick response and accurate pressure regulation.
- Relieving & Non-relieving types
- Non-rising knob

Options:

P 3 2	R A				N		P																																																	
<table border="1"> <tr><th colspan="2">Thread type</th></tr> <tr><td>BSPP</td><td>1</td></tr> <tr><td>NPT</td><td>9</td></tr> </table>		Thread type		BSPP	1	NPT	9	<table border="1"> <tr><th colspan="2">Port size</th></tr> <tr><td>1/4</td><td>2</td></tr> <tr><td>3/8</td><td>3</td></tr> <tr><td>1/2</td><td>4</td></tr> </table>		Port size		1/4	2	3/8	3	1/2	4	<table border="1"> <tr><th colspan="2">Relief</th></tr> <tr><td>Relieving</td><td>B</td></tr> <tr><td>Non relieving</td><td>N</td></tr> </table>			Relief		Relieving	B	Non relieving	N	<table border="1"> <tr><th colspan="2">Adjustment range</th></tr> <tr><th colspan="2">With round gauge</th></tr> <tr><td>2 bar; 30 psi; 0.2 MPa</td><td>Z</td></tr> <tr><td>4 bar; 60 psi; 0.4 MPa</td><td>M</td></tr> <tr><td>8 bar; 125 psi; 0.8 MPa</td><td>G</td></tr> <tr><td>17 bar; 250 psi; 1.7 MPa</td><td>J</td></tr> <tr><th colspan="2">Without gauge</th></tr> <tr><td>2 bar; 30 psi; 0.2 MPa</td><td>Y</td></tr> <tr><td>4 bar; 60 psi; 0.4 MPa</td><td>L</td></tr> <tr><td>8 bar; 125 psi; 0.8 MPa</td><td>N</td></tr> <tr><td>17 bar; 250 psi; 1.7 MPa</td><td>H</td></tr> </table>		Adjustment range		With round gauge		2 bar; 30 psi; 0.2 MPa	Z	4 bar; 60 psi; 0.4 MPa	M	8 bar; 125 psi; 0.8 MPa	G	17 bar; 250 psi; 1.7 MPa	J	Without gauge		2 bar; 30 psi; 0.2 MPa	Y	4 bar; 60 psi; 0.4 MPa	L	8 bar; 125 psi; 0.8 MPa	N	17 bar; 250 psi; 1.7 MPa	H	<table border="1"> <tr><th colspan="2">Mounting</th></tr> <tr><td>Plastic panel mount nut</td><td>P</td></tr> </table>		Mounting		Plastic panel mount nut	P
Thread type																																																								
BSPP	1																																																							
NPT	9																																																							
Port size																																																								
1/4	2																																																							
3/8	3																																																							
1/2	4																																																							
Relief																																																								
Relieving	B																																																							
Non relieving	N																																																							
Adjustment range																																																								
With round gauge																																																								
2 bar; 30 psi; 0.2 MPa	Z																																																							
4 bar; 60 psi; 0.4 MPa	M																																																							
8 bar; 125 psi; 0.8 MPa	G																																																							
17 bar; 250 psi; 1.7 MPa	J																																																							
Without gauge																																																								
2 bar; 30 psi; 0.2 MPa	Y																																																							
4 bar; 60 psi; 0.4 MPa	L																																																							
8 bar; 125 psi; 0.8 MPa	N																																																							
17 bar; 250 psi; 1.7 MPa	H																																																							
Mounting																																																								
Plastic panel mount nut	P																																																							

Port size	Description	Order Code	Flow dm ³ /s (scfm) *	Max bar (psi) *	Height mm (Inches)	Width mm (Inches)	Depth mm (Inches)
1/4"	8 bar (125 psi) Relieving	P32RA12BNNP	41 (87)	20 (300)	136 (5.4)	60 (2.36)	60 (2.36)
1/4"	8 bar (125 psi) Relieving + Gauge	P32RA12BNGP	41 (87)	20 (300)	136 (5.4)	60 (2.36)	60 (2.36)
3/8"	8 bar (125 psi) Relieving	P32RA13BNNP	65 (136)	20 (300)	136 (5.4)	60 (2.36)	60 (2.36)
3/8"	8 bar (125 psi) Relieving + Gauge	P32RA13BNGP	65 (136)	20 (300)	136 (5.4)	60 (2.36)	60 (2.36)
1/2"	8 bar (125 psi) Relieving	P32RA14BNNP	67 (142)	20 (300)	136 (5.4)	60 (2.36)	60 (2.36)
1/2"	8 bar (125 psi) Relieving + Gauge	P32RA14BNGP	67 (142)	20 (300)	136 (5.4)	60 (2.36)	60 (2.36)

* flow with 6.3 bar (91.3 psig) inlet pressure and 0.34 (4.9 psig) pressure drop.

Specifications

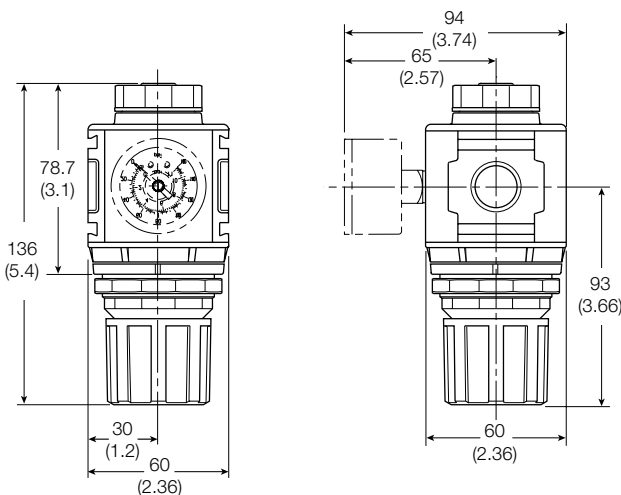
Flow Capacity*	1/4	41 dm ³ /s (81 scfm)
	3/8	65 dm ³ /s (138 scfm)
	1/2	67 dm ³ /s (142 scfm)
Operating Temperature	-25°C (-13°F) to 65.5°C (150°F)	
Max Supply Pressure	20 bar (300 psi)	
Adjusting Range Pressure	0-2 bar (30 psi)	
	0-4 bar (60 psi)	
	0-8 bar (125 psi)	
	0-17 bar (250 psi)	
Port Size	BSPP / NPT	1/4, 3/8, 1/2
Gauge Port (2 ea.)	BSPP / NPT	1/4
Weight	0.41 kg (0.90 lbs)	

* Inlet pressure 10 bar. Secondary pressure 6.3 bar.

Materials of Construction

Body	Aluminium	
Adjustment Knob	Acetal	
Body Cap	ABS	
Bonnet	33% glass-filled nylon	
Diaphragm Assembly	Nitrile / Zinc	
Bottom Plug	33% Glass-filled Nylon	
Valve Assembly	Brass / Nitrile	
Springs	Main Regulating Valve	Steel S.S.
Seals	Nitrile	
Panel Nut	Acetal	

Dimensions



NOTE: 51 mm hole required for panel nut mounting.

⚠ WARNING

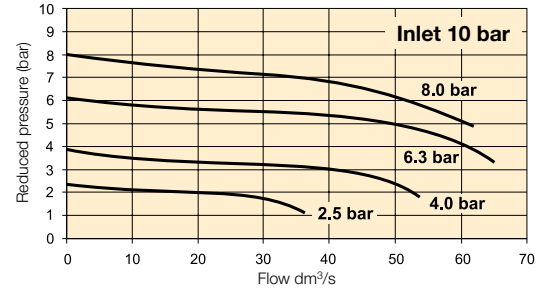
**Product rupture can cause serious injury.
 Do not connect regulator to bottled gas.
 Do not exceed maximum primary pressure rating.**

CAUTION:

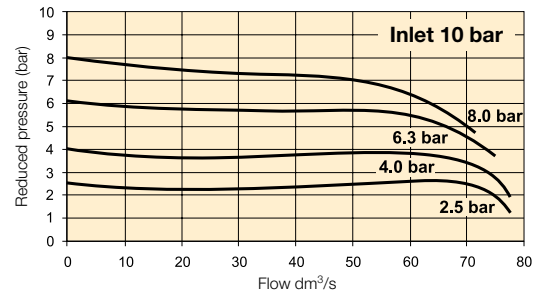
REGULATOR PRESSURE ADJUSTMENT – The working range of knob adjustment is designed to permit outlet pressures within their full range. Pressure adjustment beyond this range is also possible because the knob is not a limiting device. This is a common characteristic of most industrial regulators, and limiting devices may be obtained only by special design. For best performance, regulated pressure should always be set by increasing the pressure up to the desired setting.

Flow Charts

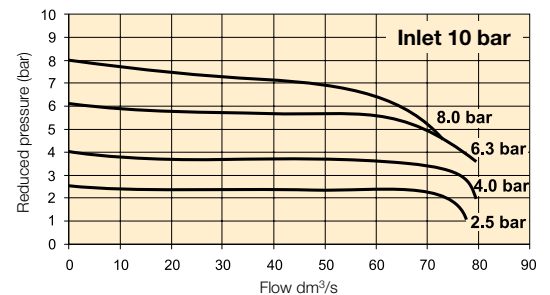
1/4 Regulator



3/8 Regulator



1/2 Regulator



Repair and Service Kits

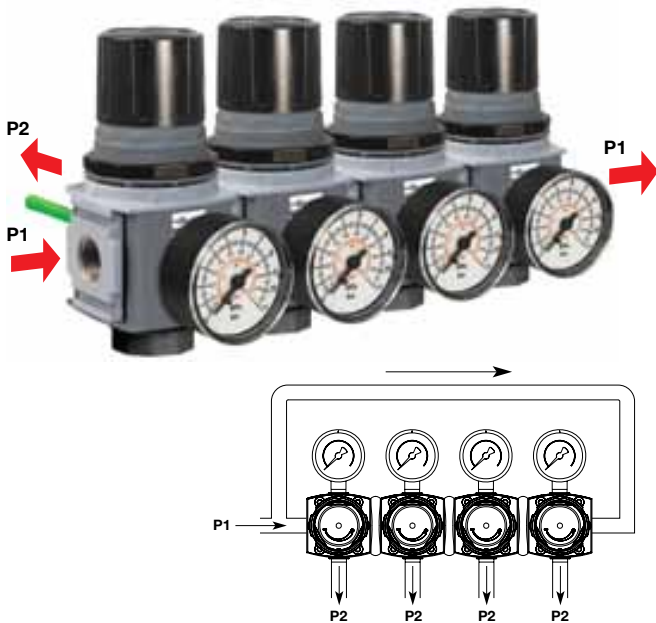
Regulator repair kit - Relieving	P32KA00RB
Regulator repair kit - Non-relieving	P32KA00RC
Panel mount nut - Aluminium	P32KA00MM
Panel mount nut - Plastic	P32KA00MP
Angle Bracket (uses panel mount threads)	P32KA00MR
T-Bracket with body connector	P32KA00MT
T-Bracket	P32KA00MB
Body connector	P32KA00CB

Gauges

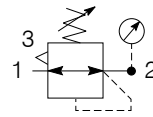
50mm (2") Round 1/4" center back mount
 for units ordered without square gauge

0-60 PSIG / 0-4 bar / 0-0.4 MPa	P6G-ERB2040
0-160 PSIG / 0-11 bar / 0-1.1 MPa	P6G-ERB2110
0-300 PSIG / 0-20 bar / 0-2 MPa	P6G-ERB2200

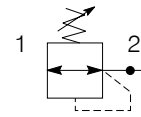
Compact Common P1 Regulator P32



Symbols



Self relieving regulator with gauge



Non relieving regulator with gauge

- Manifold style regulator with line pressure on both sides.
- Pressure output is at front or rear.
- Integral 1/4, 3/8 or 1/2 ports (BSPP & NPT)
- Robust construction
- Secondary pressure ranges 2, 4, 8 & 17 bar
- Secondary aspiration plus balanced poppet provides quick response and accurate pressure regulation.
- Relieving & Non-relieving types
- Non-rising knob

Options:

P 3 2	H A				N		P																																						
<table border="1"> <tr><th colspan="2">Thread type</th></tr> <tr><td>BSPP</td><td>1</td></tr> <tr><td>NPT</td><td>9</td></tr> </table>		Thread type		BSPP	1	NPT	9	<table border="1"> <tr><th colspan="2">Port size</th></tr> <tr><td>1/4</td><td>2</td></tr> <tr><td>3/8</td><td>3</td></tr> <tr><td>1/2</td><td>4</td></tr> </table>		Port size		1/4	2	3/8	3	1/2	4	<table border="1"> <tr><th colspan="2">Relief</th></tr> <tr><td>Relieving</td><td>B</td></tr> <tr><td>Non relieving</td><td>N</td></tr> </table>			Relief		Relieving	B	Non relieving	N	<table border="1"> <tr><th colspan="2">Adjustment range</th></tr> <tr><th colspan="2">Without gauge</th></tr> <tr><td>2 bar; 30 psi; 0.2 MPa</td><td>Y</td></tr> <tr><td>4 bar; 60 psi; 0.4 MPa</td><td>L</td></tr> <tr><td>8 bar; 125 psi; 0.8 MPa</td><td>N</td></tr> <tr><td>17 bar; 250 psi; 1.7 MPa</td><td>H</td></tr> </table>		Adjustment range		Without gauge		2 bar; 30 psi; 0.2 MPa	Y	4 bar; 60 psi; 0.4 MPa	L	8 bar; 125 psi; 0.8 MPa	N	17 bar; 250 psi; 1.7 MPa	H	<table border="1"> <tr><th colspan="2">Mounting</th></tr> <tr><td>Plastic panel mount nut</td><td>P</td></tr> </table>	Mounting		Plastic panel mount nut	P
Thread type																																													
BSPP	1																																												
NPT	9																																												
Port size																																													
1/4	2																																												
3/8	3																																												
1/2	4																																												
Relief																																													
Relieving	B																																												
Non relieving	N																																												
Adjustment range																																													
Without gauge																																													
2 bar; 30 psi; 0.2 MPa	Y																																												
4 bar; 60 psi; 0.4 MPa	L																																												
8 bar; 125 psi; 0.8 MPa	N																																												
17 bar; 250 psi; 1.7 MPa	H																																												
Mounting																																													
Plastic panel mount nut	P																																												

Port size	Description	Order Code	Flow dm ³ /s (scfm)	Max bar (psi)	Height mm (Inches)	Width mm (Inches)	Depth mm (Inches)
1/4"	8 bar (125 psi) Relieving	P32HA12BNNP	28 (59)	20 (300)	136 (5.4)	60 (2.36)	60 (2.36)
3/8"	8 bar (125 psi) Relieving	P32HA13BNNP	28 (59)	20 (300)	136 (5.4)	60 (2.36)	60 (2.36)
1/2"	8 bar (125 psi) Relieving	P32HA14BNNP	28 (59)	20 (300)	136 (5.4)	60 (2.36)	60 (2.36)

* flow with 6.3 bar (91.3 psig) inlet pressure and 0.34 (4.9 psig) pressure drop.

Specifications

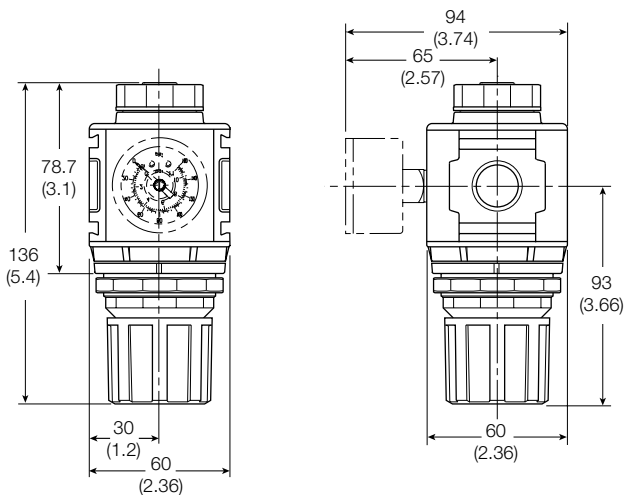
Flow Capacity*	1/4	28 dm ³ /s (59 scfm)
	3/8	28 dm ³ /s (59 scfm)
	1/2	28 dm ³ /s (59 scfm)
Operating Temperature	-25°C (-13°F) to 65.5°C (150°F)	
Max Supply Pressure	20 bar (300 psi)	
Adjusting Range Pressure	0-2 bar (30 psi)	
	0-4 bar (60 psi)	
	0-8 bar (125 psi)	
	0-17 bar (250 psi)	
Port Size	BSPP / NPT	1/4, 3/8, 1/2
P2 Regulated Ports (2 ea.)	BSPP / NPT	1/4
Weight	0.50 kg (1.10 lbs)	

* Inlet pressure 10 bar. Secondary pressure 6.3 bar.

Materials of Construction

Body	Zinc	
Adjustment Knob	Acetal	
Body Cap	ABS	
Bonnet	33% glass-filled nylon	
Diaphragm Assembly	Nitrile / Zinc	
Bottom Plug	33% Glass-filled Nylon	
Valve Assembly	Brass / Nitrile	
Springs	Main Regulating	Steel
	Valve	S.S.
Seals	Nitrile	
Panel Nut	Acetal	

Dimensions



NOTE: 51 mm hole required for panel nut mounting.

WARNING

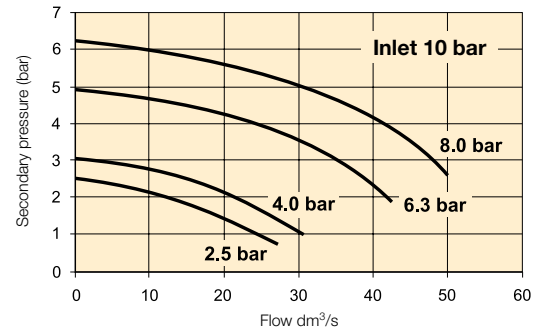
**Product rupture can cause serious injury.
Do not connect regulator to bottled gas.
Do not exceed maximum primary pressure rating.**

CAUTION:

REGULATOR PRESSURE ADJUSTMENT – The working range of knob adjustment is designed to permit outlet pressures within their full range. Pressure adjustment beyond this range is also possible because the knob is not a limiting device. This is a common characteristic of most industrial regulators, and limiting devices may be obtained only by special design. For best performance, regulated pressure should always be set by increasing the pressure up to the desired setting.

Flow Charts

P32 Common Port Regulator



Repair and Service Kits

Regulator repair kit - Relieving	P32KA00RB
Regulator repair kit - Non-relieving	P32KA00RC
Panel mount nut - Aluminium	P32KA00MM
Panel mount nut - Plastic	P32KA00MP
Angle Bracket (uses panel mount threads)	P32KA00MR
T-Bracket with body connector	P32KA00MT
T-Bracket	P32KA00MB
Body connector	P32KA00CB

Gauges

50mm (2") Round 1/4" center back mount

for units ordered without square gauge

0-60 PSIG / 0-4 bar / 0-0.4 MPa	P6G-ERB2040
0-160 PSIG / 0-11 bar / 0-1.1 MPa	P6G-ERB2110
0-300 PSIG / 0-20 bar / 0-2 MPa	P6G-ERB2200

Specifications

Flow Capacity*	1/4	42 dm ³ /s (89 scfm)
	3/8	58 dm ³ /s (123 scfm)
	1/2	64 dm ³ /s (136 scfm)
Operating Temperature	Plastic Bowl	-25°C (-13°F) to 52°C (125°F)
	Metal Bowl	-25°C (-13°F) to 65.5°C (150°F)
Max Supply Pressure	Plastic Bowl	10 bar (150 psi)
	Metal Bowl	17 bar (250 psi)
Standard Filtration	5 Micron	
Useful Retention**	51 cm ³ (1.7 US oz.)	
Adjusting Range Pressure	0-2 bar (30 psi)	
	0-4 bar (60 psi)	
	0-8 bar (125 psi)	
	0-17 bar (250 psi)	
Port Size	BSPP / NPT	1/4, 3/8, 1/2
Gauge Port (2 ea.)	BSPP / NPT	1/4
Weight	0.53 kg (1.17 lbs)	

* Inlet pressure 10 bar. Secondary pressure 6.3 bar.
 ** Useful retention refers to volume below the quiet zone baffle.

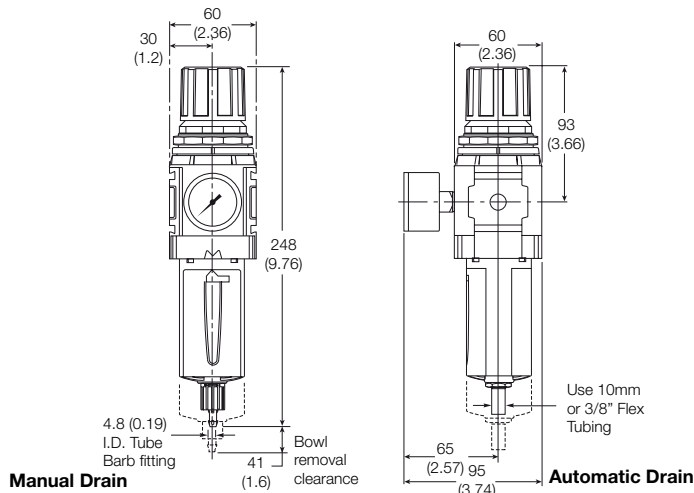
Air quality:

Within ISO 8573-1: 1991 Class 3 (Particulates)
 Within ISO 8573-1: 2001 Class 6 (Particulates)

Materials of Construction

Body	Aluminium	
Adjustment Knob	Acetal	
Body Cap	ABS	
Element Retainer / Baffle	Acetal	
Bowl	Plastic Bowl	Polycarbonate
	Metal Bowl	Zinc
Bowl Guard	Nylon	
Filter Element	Sintered Polyethylene	
Seals	Plastic Bowl	Nitrile
	Metal Bowl	Nitrile
Springs	Main Regulating / Valve	Steel / S.S.
Valve Assembly	Brass / Nitrile	
Diaphragm Assembly	Nitrile / Zinc	
Panel Nut	Acetal	
Sight Gauge	Metal Bowl	Polycarbonate

Dimensions

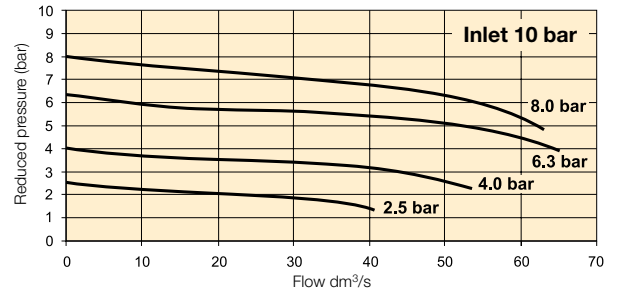


⚠ WARNING

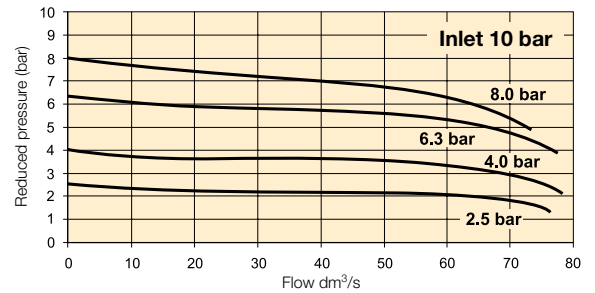
**Product rupture can cause serious injury.
 Do not connect regulator to bottled gas.
 Do not exceed maximum primary pressure rating.**

Flow Charts

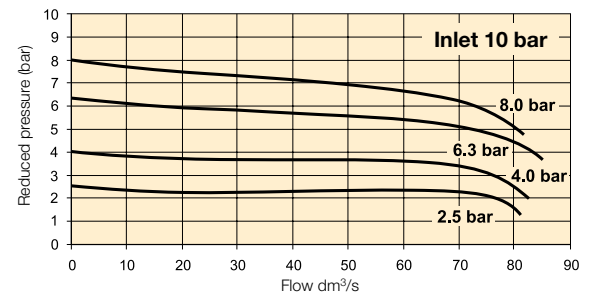
1/4 Filter/Regulator



3/8 Filter/Regulator



1/2 Filter/Regulator



Repair and Service Kits

Plastic bowl / Bowl guard manual drain	P32KA00BGM
Metal bowl / Sight gauge manual drain	P32KA00BSM
Auto drain	P32KA00DA
5µ particle filter element	P32KA00ESE
Regulator repair kit - Relieving	P32KA00RB
Regulator repair kit - Non-relieving	P32KA00RC
Panel mount nut - Aluminium	P32KA00MM
Panel mount nut - Plastic	P32KA00MP
Angle Bracket (fits to panel mount threads)	P32KA00MR
T-Bracket (fits to body connector)	P32KA00MB
T-Bracket with body connector	P32KA00MT
Body connector	P32KA00CB

Gauges

50mm (2") Round 1/4" center back mount for units ordered without square gauge

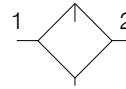
0-60 PSIG / 0-4 bar / 0-0.4 MPa	P6G-ERB2040
0-160 PSIG / 0-11 bar / 0-1.1 MPa	P6G-ERB2110
0-300 PSIG / 0-20 bar / 0-2 MPa	P6G-ERB2200

For best performance, regulated pressure should always be set by increasing the pressure up to the desired setting.

Compact Lubricator - P32

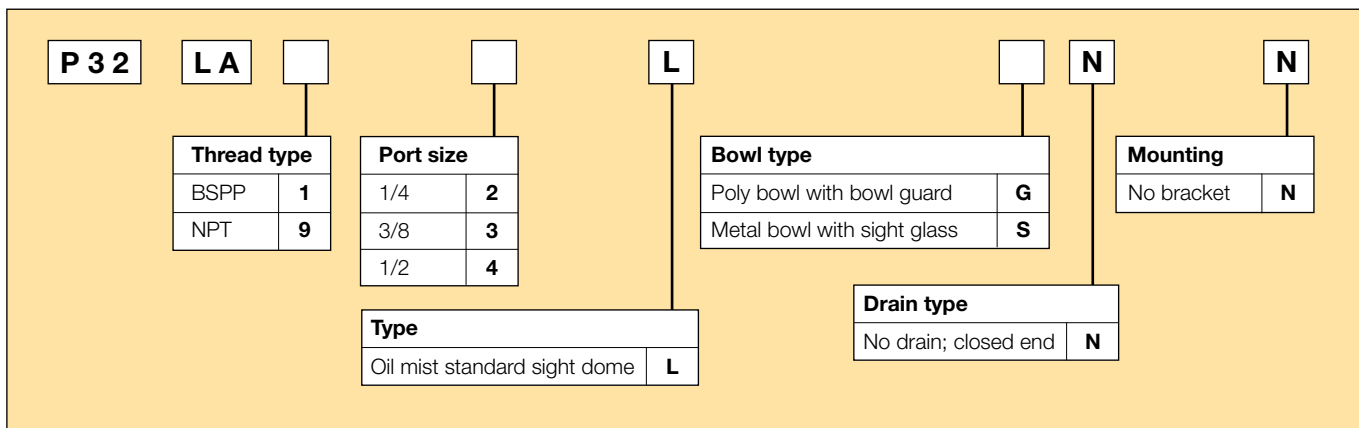


Symbols



- Integral 1/4, 3/8 or 1/2 ports (BSPP & NPT)
- Robust but lightweight aluminium construction
- Proportional oil delivery over a wide range of air flows.
- Finger tip ratchet control for precise oil drip rate adjustment
- Fill from top under system pressure

Options:

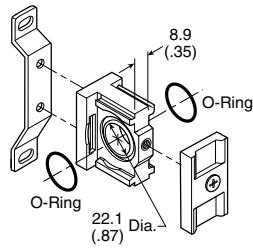


Port size	Description	Order Code	Flow dm ³ /s *	(scfm) *	Max bar (psi)	Height mm (Inches)	Width mm (Inches)	Depth mm (Inches)
1/4"	Poly bowl - No drain	P32LA12LGNN	18	(38)	10 (150)	211 (8.3)	60 (2.36)	60 (2.36)
1/4"	Metal bowl - No drain	P32LA12LSNN	18	(38)	17 (250)	211 (8.3)	60 (2.36)	60 (2.36)
3/8"	Poly bowl - No drain	P32LA13LGNN	32	(68)	10 (150)	211 (8.3)	60 (2.36)	60 (2.36)
3/8"	Metal bowl - No drain	P32LA13LSNN	32	(68)	17 (250)	211 (8.3)	60 (2.36)	60 (2.36)
1/2"	Poly bowl - No drain	P32LA14LGNN	47	(100)	10 (150)	211 (8.3)	60 (2.36)	60 (2.36)
1/2"	Metal bowl - No drain	P32LA14LSNN	47	(100)	17 (250)	211 (8.3)	60 (2.36)	60 (2.36)

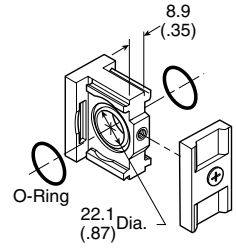
* flow with 6.3 bar (91.3 psig) inlet pressure and 0.34 (4.9 psig) pressure drop.

Accessories - P32 Series

T-Bracket w/ Body Connector
P32KA00MT



Body Connector
P32KA00CB

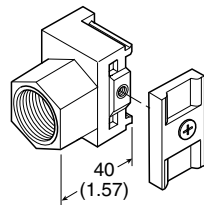


Body Connector 'O' ring Kit
Pack of 5 P32KA00CY

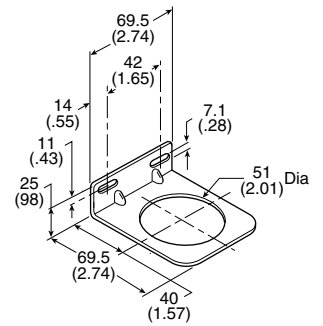


Port Block Kit

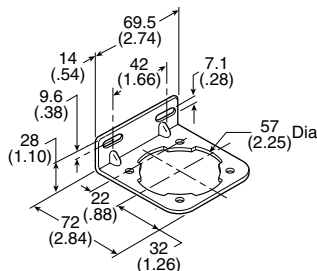
- 1/4 NPT.....P32KA92CP
- 3/8 NPT.....P32KA93CP
- 1/2 NPT.....P32KA94CP
- 3/4 NPT.....P32KA96CP
- G 1/4P32KA12CP
- G 3/8.....P32KA13CP
- G 1/2.....P32KA14CP
- G 3/4.....P32KA16CP



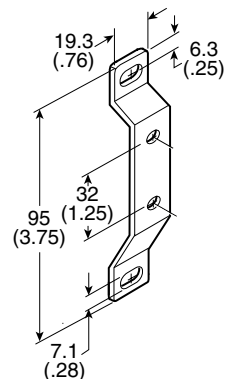
Angle Bracket
P32KA00MR



L-Bracket
(Fits to filter and lubricator body)
P32KA00ML







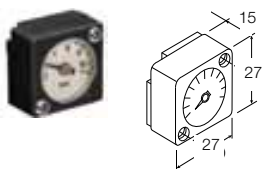
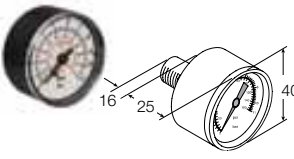
T-Bracket
(fits to body connector or port block)
P32KA00MB



Accessories Kits

Series	Description	Connection	Order Code	
P31 P32 P33	Panel Mount Nut (Plastic)		P31KA00MP P32KA00MP P33KA00MP	
P31 P32 P33	Panel Mount Nut (Aluminium)		P31KA00MM P32KA00MM P33KA00MM	
P31 P32 P33	5µ Element Kit		P31KA00ESE P32KA00ESE P33KA00ESE	
P31 P32 P33	1µ Element Kit		P31KA00ES9 P32KA00ES9 P33KA00ES9	
P31 P32 P33	0.01µ Element Kit		P31KA00ESC P32KA00ESC P33KA00ESC	
P31 P32 P33	Adsorber Element Kit		P31KA00ESA P32KA00ESA P33KA00ESA	
P32 / P33	Auto Drain Kit		P32KA00DA	
P32 / P33	Differential Pressure Indicator Kit		P32KA00RQ	
P31 P32 P33	Plastic Bowl with Bowl Guard & Manual Drain		P31KA00BGM P32KA00BGM P33KA00BGM	
P31	Plastic Bowl with Bowl Guard & Pulse Drain		P31KA00BGB	
P32 P33	Plastic Bowl with Bowl Guard & Auto Drain		P32KA00BGA P33KA00BGA	

Accessories Kits

Series	Description	Connection	Order Code	
P31	Metal Bowl without Sight Gauge & Pulse Drain		P31KA00BMB	
P32 P33	Metal Bowl with Sight Gauge & Manual Drain		P32KA00BSM P33KA00BSM	
P32 P33	Metal Bowl with Sight Gauge & Auto Drain		P32KA00BSA P33KA00BSA	
P31 P32 P33	Lubricator - Plastic Bowl with Bowl Guard & Close End		P31KA00BGN P32KA00BGN P33KA00BGN	
P31 P32 P33	Lubricator - Metal Bowl Without Sight Gauge, No Drain Lubricator - Metal Bowl With Sight Gauge, No Drain Lubricator - Metal Bowl With Sight Gauge, No Drain		P31KA00BMN P32KA00BSN P33KA00BSN	
P31 P32 P33	Regulator - Relieving Repair Kit		P31KA00RB P32KA00RB P33KA00RB	
P31 P32 P33	Regulator - Non Relieving Repair Kit		P31KA00RC P32KA00RC P33KA00RC	
P31	Square Flush Mounting Gauge Kit	0-4 bar 0-10 bar	K4511SCR04B K4511SCR11B	
P31	40mm Round Gauge	0-30 psi / 0-2 bar 0-60 psi / 0-4.1 bar 0-160 psi / 0-10 bar	P3D-KAB1AYN P3D-KAB1ALN P3D-KAB1ANN	
P32 / P33	50mm Round Gauge	0-60 psi / 0-4.1 bar 0-160 psi / 0-10 bar 0-300 psi / 0-20 bar	P6G-ERB2040 P6G-ERB2110 P6G-ERB2200	