



EASY BEST MARKETING SDN BHD

PRODUCT CATALOG

QUALITY , VARIETY & RELIABILITY



COMMERCIAL KITCHEN DESIGN & PLANNING

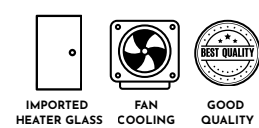
- **COLD ROOMS & REFRIGERATIONS**
- **STAINLESS STEEL FABRICATION**
- **FOOD SERVICE EQUIPMENT**
- **EXHAUST DUCTING**



1 DOOR DISPLAY CHILLER / FREEZER -1580

FEATURES :

- 1.LED LIGHT
- 2.CONDENSER WITH FAN
- 3.MECHANICAL TEMPERATURE CONTROLLER
- 4.STRONG ADJUSTABLE SHELVES
- 5.FASHIONABLE FRONT LOUVER PANEL DESIGN
- 6.BIG EXTRUDED HANDLE



MODEL :	EB-1D/DC-1580	EB-1D/DF-1580
DIMENSION(WxDxH MM) :	640x730x2080	640x730x2080
CAPACITY (LITRES) :	465	465
VOLTAGE(V) :	220-240V	220-240V
FREQUENCY(HZ) :	50HZ	50HZ
TEMPERATURE RANGE (C) :	2 ~ 6c	-14 ~ -20c
REFRIGERANT :	R134a	R404a
COMPRESSOR(HP) :	1/4	1/2
NO.OF SHELF(PCS) :	5	5
NET WEIGHT(KGS) :	92	100

2 DOOR DISPLAY CHILLER / FREEZER -1580

FEATURES :

- 1.LED LIGHT
- 2.CONDENSER WITH FAN
- 3.MECHANICAL TEMPERATURE CONTROLLER
- 4.STRONG ADJUSTABLE SHELVES
- 5.FASHIONABLE FRONT LOUVER PANEL DESIGN
- 6.BIG EXTRUDED HANDLE



MODEL :	EB-2D/DC-1580	EB-2D/DF-1580
DIMENSION(WxDxH MM) :	1230x730x2080	1230x730x2080
CAPACITY (LITRES) :	975	975
VOLTAGE(V) :	220-240V	220-240V
FREQUENCY(HZ) :	50HZ	50HZ
TEMPERATURE RANGE (C) :	2 ~ 6c	-14 ~ -20c
REFRIGERANT :	R134a	R404a
COMPRESSOR(HP) :	1/3	7/8
NO.OF SHELF(PCS) :	5	5
NET WEIGHT(KGS) :	155	177

3 DOOR DISPLAY CHILLER / FREEZER -1580

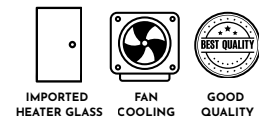
FEATURES :

- 1.LED LIGHT
- 2.CONDENSER WITH FAN
- 3.MECHANICAL TEMPERATURE CONTROLLER
- 4.STRONG ADJUSTABLE SHELVES
- 5.FASHIONABLE FRONT LOUVER PANEL DESIGN
- 6.BIG EXTRUDED HANDLE



MODEL :	EB-3D/DC-1580	EB-3D/DF-1580
DIMENSION(WxDxH MM) :	1830x730x2080	1830x730x2080
CAPACITY (LITRES) :	1505	1505
VOLTAGE(V) :	220-240V	220-240V
FREQUENCY(HZ) :	50HZ	50HZ
TEMPERATURE RANGE (C) :	2 ~ 6c	-14 ~ -20c
REFRIGERANT :	R134a	R404a
COMPRESSOR(HP) :	1/2	1
NO.OF SHELF(PCS) :	5	5
NET WEIGHT(KGS) :	205	227

2 DOOR DISPLAY CHILLER / FREEZER -1670



FEATURES :

- 1.LED LIGHT
- 2.CONDENSER WITH FAN
- 3.MECHANICAL TEMPERATURE CONTROLLER
- 4.STRONG ADJUSTABLE SHELVES
- 5.FASHIONABLE FRONT LOUVER PANEL DESIGN
- 6.BIG EXTRUDED HANDLE

MODEL :	EB-2D/DC-BB-1670	EB-2D/DF-BB-1670
DIMENSION(WxDxH MM) :	1230x730x2180	1230x730x2180
CAPACITY (LITRES) :	1050	1050
VOLTAGE(V) :	220-240V	220-240V
FREQUENCY(HZ) :	50HZ	50HZ
TEMPERATURE RANGE (C) :	2 ~ 6c	-14 ~ -20c
REFRIGERANT :	R134a	R404a
NO.OF SHELF(PCS) :	5	5
NET WEIGHT(KGS) :	171	193

3 DOOR DISPLAY CHILLER / FREEZER -1670



FEATURES :

- 1.LED LIGHT
- 2.CONDENSER WITH FAN
- 3.MECHANICAL TEMPERATURE CONTROLLER
- 4.STRONG ADJUSTABLE SHELVES
- 5.FASHIONABLE FRONT LOUVER PANEL DESIGN
- 6.BIG EXTRUDED HANDLE

MODEL :	EB-3D/DC-BB-1670	EB-3D/DF-BB-1670
DIMENSION(WxDxH MM) :	1830x730x2180	1830x730x2180
CAPACITY (LITRES) :	1570	1570
VOLTAGE(V) :	220-240V	220-240V
FREQUENCY(HZ) :	50HZ	50HZ
TEMPERATURE RANGE (C) :	2 ~ 6c	-14 ~ -20c
REFRIGERANT :	R134a	R404a
NO.OF SHELF(PCS) :	5	5
NET WEIGHT(KGS) :	250	272

4 DOOR DISPLAY CHILLER / FREEZER -1670

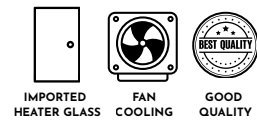


FEATURES :

- 1.LED LIGHT
- 2.CONDENSER WITH FAN
- 3.MECHANICAL TEMPERATURE CONTROLLER
- 4.STRONG ADJUSTABLE SHELVES
- 5.FASHIONABLE FRONT LOUVER PANEL DESIGN
- 6.BIG EXTRUDED HANDLE

MODEL :	EB-4D/DC-BB-1670	EB-4D/DF-BB-1670
DIMENSION(WxDxH MM) :	2500x840x2200	2500x840x2200
CAPACITY (LITRES) :	2450	2450
VOLTAGE(V) :	220-240V	220-240V
FREQUENCY(HZ) :	50HZ	50HZ
TEMPERATURE RANGE (C) :	2 ~ 6c	-14 ~ -20c
REFRIGERANT :	R134a	R404a
NO.OF SHELF(PCS) :	5	5
NET WEIGHT(KGS) :	300	322

2 DOOR DISPLAY CHILLER / FREEZER -XL



FEATURES :

- 1.LED LIGHT
- 2.CONDENSER WITH FAN
- 3.MECHANICAL TEMPERATURE CONTROLLER
- 4.STRONG ADJUSTABLE SHELVES
- 5.FASHIONABLE FRONT LOUVER PANEL DESIGN
- 6.BIG EXTRUDED HANDLE

MODEL :	EB-2D/DC-BB-XL	EB-2D/DF-BB-XL
DIMENSION(WxDxH MM) :	1370x813x2260	1370x813x2260
CAPACITY (LITRES) :	1300	1300
VOLTAGE(V) :	220-240V	220-240V
FREQUENCY(HZ) :	50HZ	50HZ
TEMPERATURE RANGE (C) :	2 ~ 6c	-14 ~ -20c
REFRIGERANT :	R134a	R404a
NO.OF SHELF(PCS) :	6	6
NET WEIGHT(KGS) :	180	202

3 DOOR DISPLAY CHILLER / FREEZER -XL



FEATURES :

- 1.LED LIGHT
- 2.CONDENSER WITH FAN
- 3.MECHANICAL TEMPERATURE CONTROLLER
- 4.STRONG ADJUSTABLE SHELVES
- 5.FASHIONABLE FRONT LOUVER PANEL DESIGN
- 6.BIG EXTRUDED HANDLE

MODEL :	EB-3D/DC-BB-XL	EB-3D/DF-BB-XL
DIMENSION(WxDxH MM) :	2060x813x2260	2060x813x2260
CAPACITY (LITRES) :	2000	2000
VOLTAGE(V) :	220-240V	220-240V
FREQUENCY(HZ) :	50HZ	50HZ
TEMPERATURE RANGE (C) :	2 ~ 6c	-14 ~ -20c
REFRIGERANT :	R134a	R404a
NO.OF SHELF(PCS) :	6	6
NET WEIGHT(KGS) :	220	240



1 DOOR DISPLAY CHILLER

FEATURES :

- 1.LED LIGHT
- 2.BOTTOM CONDENSER WITH FAN
- 3.MECHANICAL TEMPERATURE CONTROLLER
- 4.STRONG ADJUSTABLE SHELVES
- 5.FASHIONABLE FRONT LOUVER PANEL DESIGN
- 6.BIG EXTRUDED HANDLE
- 7.FOUR UNIVERSAL CASTORS ,TWO ARE LOCKABLE
- 8.LOCK & KEY



MODEL :	TC-SC350
DIMENSION(WxDxH MM) :	600x665x1877
CAPACITY (LITRES) :	350
VOLTAGE(V) :	220-240V
FREQUENCY(HZ) :	50HZ
TEMPERATURE RANGE (C) :	0 ~ 10c
REFRIGERANT :	R134a / R600a
RATED CURRENT :	1.7A
NO.OF SHELF(PCS) :	5
NET WEIGHT(KGS) :	69

CHEST FREEZER

CAN BE USE ON :



MEAT & SEAFOOD



ICE CREAM



TESCOOL
CREATIVE COOLING SOLUTIONS

FEATURES :

- 1.FLIP-TOP CHEST FREEZER
- 2.CABINET WITH ONE STAIR INSIDE
- 3.THICK INSULATION FOAM
- 4.FOUR WHEELS FOR EASILY MOVING
- 5.DOOR WITH LOCK
- 6.BE SUITABLE FOR DISPLAY FREEZING FOOD IN SUPERMARKETS



MODEL :	TC-CF250	TC-CF460	TC-CF650
DIMENSION(WxDxH MM) :	988x560x829	1480x670x830	1800x760x827
CAPACITY (LITRES) :	250	460	650
VOLTAGE(V) :	220-240V	220-240V	220-240V
FREQUENCY(HZ) :	50HZ	50HZ	50HZ
TEMPERATURE RANGE (C) :	-18 ~ 22c	-18 ~ 22c	-18 ~ 22c
REFRIGERANT :	R600a	R134a	R134a
COOLING TYPE :	STATIC	STATIC	STATIC
NET WEIGHT(KGS) :	59	80	87

CAN BE USE ON :



MEAT & SEAFOOD



ICE CREAM

CURVED GLASS DOOR FREEZER

FLAT GLASS DOOR FREEZER

FEATURES :

- 1.QUICK & DEEP FREEZING
- 2.FOUR WHEELS FOR EASILY MOVING
- 3.DOOR WITH LOCK
- 4.BE SUITABLE FOR DISPLAY FREEZING FOOD IN SUPERMARKETS



MODEL :	TC-CF-290Y	TC-CF300F
DIMENSION(WxDxH MM) :	1205x625x865	1080x680x832
CAPACITY (LITRES) :	290	300
VOLTAGE(V) :	220-240V	220-240V
FREQUENCY(HZ) :	50HZ	50HZ
TEMPERATURE RANGE (C) :	-18 ~ -22c	-18 ~ -22c
REFRIGERANT :	R134a	R134a / R600a
COOLING TYPE :	STATIC	STATIC
NET WEIGHT(KGS) :	60	65

CURVED GLASS DOOR FREEZER

FEATURES :

- 1.HEAT REFLECTION GLASS
- 2.QUICK AND DEEP FREEZING
- 3.MECHANICAL TEMPERATURE CONTROLLER
- 4.LOW ENERGY COMSUMPTION
- 5.FOUR STRONG CASTORS
- 6.LARGE STORAGE SPACE
- 7.PVC HIT PUMPERS

CAN BE USE ON :



MEAT & SEAFOOD



ICE CREAM



MODEL :	TC-WD-500	TC-WD-700
DIMENSION(WxDxH MM) :	1425x754x840	2025x754x840
CAPACITY (LITRES) :	500	700
VOLTAGE(V) :	220-240V	220-240V
FREQUENCY(HZ) :	50HZ	50HZ
TEMPERATURE RANGE (C) :	-18 ~ -22c	-18 ~ -22c
REFRIGERANT :	R134a / R290	R134a / R290
COOLING TYPE :	STATIC	STATIC
NET WEIGHT(KGS) :	77	116

BEVERAGE COOLER

CAN BE USE ON :



BOTTLE & TIN



BEVERAGE CABINET



FRUITS



VEGETAVLES

CAN BE USE ON :



BOTTLE & TIN

MODEL :	TC-BC-60	TC-BC-110	TC-BC660
DIMENSION(WxDxH MM) :	475x517x746	475x517x1017	660x700x1460
CAPACITY (LITRES) :	60	110	165
VOLTAGE(V) :	220-240V	220-240V	220-240V
FREQUENCY(HZ) :	50HZ	50HZ	50HZ
TEMPERATURE RANGE (C) :	0 ~ 10c	0 ~ -100c	2 ~ 8c
REFRIGERANT :	R134a	R134a	R404a
COOLING TYPE :	STATIC	STATIC	VENTILATED
NET WEIGHT(KGS) :	23	32	151

ICE CREAM SHOWCASE



MODEL :	TC-ICS-12A-H	TC-ICS-16A-H
DIMENSION(WxDxH MM) :	1200x1145x1365	1530x1145x1365
CAPACITY (PANS) :	12	16
VOLTAGE(V) :	220V	220V
FREQUENCY(HZ) :	50HZ	50HZ
TEMPERATURE RANGE (C) :	-16 ~ -20c	-16 ~ -20c
REFRIGERANT :	R404a	R404a
POWER(W) :	780	910
NET WEIGHT(KGS) :	170	210

BLAST FREEZER



MODEL :	TC-BCF-5	TC-BCF-10
DIMENSION(WxDxH MM) :	750x815x870	750x830x1435
CAPACITY (LITRES) :	94	178
VOLTAGE(V) :	220V	220V
FREQUENCY(HZ) :	50HZ	50HZ
TEMPERATURE RANGE (C) :	-35c	-35c
RATED CURRENT(A) :	6.5	12
NO.OF TRAYS :	5	10

2 DOOR UPRIGHT CHILLER / FREEZER (LOCAL)



MODEL :	EB-2DU/C	EB-2DU/F
DIMENSION(WxDxH MM) :	620x720x2080	620x720x2080
CAPACITY (LITRES) :	415	415
VOLTAGE(V) :	220-240V	220-240V
FREQUENCY(HZ) :	50HZ	50HZ
TEMPERATURE RANGE (C) :	2 ~ 6c	-14 ~ -20c
REFRIGERANT :	R134a	R404a
COMPRESSOR(HP) :	1/4	1/2
NET WEIGHT(KGS) :	93	93

4 DOOR UPRIGHT CHILLER / FREEZER (LOCAL)



MODEL :	EB-4DU/C	EB-4DU/F	EB-4DU/CF
DIMENSION(WxDxH MM) :	1240x750x2080	1240x750x2080	1240x750x2080
CAPACITY (LITRES) :	860	860	860
VOLTAGE(V) :	220-240V	220-240V	220-240V
FREQUENCY(HZ) :	50HZ	50HZ	50HZ
TEMPERATURE RANGE (C) :	2 ~ 6c	-14 ~ -20c	2 ~ 6c & -14 ~ -20c
REFRIGERANT :	R134a	R404a	R134a & R404a
COMPRESSOR(HP) :	1/3	3/4	1/4 + 1/2
NET WEIGHT(KGS) :	150	150	150

6 DOOR UPRIGHT CHILLER / FREEZER (LOCAL)



MODEL :	EB-6DU/C	EB-6DU/F	EB-6DU/CF
DIMENSION(WxDxH MM) :	1840x750x2080	1840x750x2080	1840x750x2080
CAPACITY (LITRES) :	1200	1200	1200
VOLTAGE(V) :	220-240V	220-240V	220-240V
FREQUENCY(HZ) :	50HZ	50HZ	50HZ
TEMPERATURE RANGE (C) :	2 ~ 6c	-14 ~ -20c	2 ~ 6c & -14 ~ -20c
REFRIGERANT :	R134a	R404a	R134a & R404a
COMPRESSOR(HP) :	1/2	7/8	1/3 + 1/2
NET WEIGHT(KGS) :	200	200	200

1 FULL DOOR CHILLER / FREEZER



MODEL :	TC-1D/C	TC-1D/F
DIMENSION(WxDxH MM) :	600x740x1950	600x740x1950
CAPACITY (LITRES) :	410	410
VOLTAGE(V) :	220-240V	220-240V
FREQUENCY(HZ) :	50HZ	50HZ
TEMPERATURE RANGE (C) :	-2 ~ 8c	-17 ~ -22c
REFRIGERANT :	R134a	R404a
POWER(W) :	290	600
COOLING TYPE :	VENTILATED	VENTILATED
NET WEIGHT(KGS) :	90	90

2 DOOR UPRIGHT CHILLER / FREEZER



MODEL :	TC-2DU/C	TC-2DU/F
DIMENSION(WxDxH MM) :	640x740x1950	640x740x1950
CAPACITY (LITRES) :	410	410
VOLTAGE(V) :	220-240V	220-240V
FREQUENCY(HZ) :	50HZ	50HZ
TEMPERATURE RANGE (C) :	-2 ~ 8c	-17 ~ -22c
REFRIGERANT :	R134a	R404a
POWER(W) :	290	600
COOLING TYPE :	VENTILATED	VENTILATED
NET WEIGHT(KGS) :	90	90

2 FULL DOOR CHILLER / FREEZER



MODEL :	TC-2D/C	TC-2D/F
DIMENSION(WxDxH MM) :	1200x740x1950	1200x740x1950
CAPACITY (LITRES) :	900	900
VOLTAGE(V) :	220-240V	220-240V
FREQUENCY(HZ) :	50HZ	50HZ
TEMPERATURE RANGE (C) :	-2 ~ 8c	-17 ~ -22c
REFRIGERANT :	R134a	R404a
POWER(W) :	450	750
COOLING TYPE :	VENTILATED	VENTILATED
NET WEIGHT(KGS) :	130	130

4 DOOR UPRIGHT CHILLER / FREEZER



GOOD QUALITY

MODEL :	TC-4DU/C	TC-4DU/F	TC-4DU/CF
DIMENSION(WxDxH MM) :	1200x740x1950	1200x740x1950	1200x740x1950
CAPACITY (LITRES) :	900	900	820
VOLTAGE(V) :	220-240V	220-240V	220-240V
FREQUENCY(HZ) :	50HZ	50HZ	50HZ
TEMPERATURE RANGE (C) :	-2 ~ 8c	-17 ~ -22c	-2 ~ 8c & -14 ~ -20c
REFRIGERANT :	R134a	R404a	R134a & R404a
POWER(W) :	450	750	870
COOLING TYPE :	VENTILATED	VENTILATED	VENTILATED
NET WEIGHT(KGS) :	130	130	155

6 DOOR UPRIGHT CHILLER / FREEZER



MODEL :	TC-6DU/C	TC-6DU/F	TC-6DU/CF
DIMENSION(WxDxH MM) :	1800x740x1950	1800x740x1950	1800x740x1950
CAPACITY (LITRES) :	1390	1390	1310
VOLTAGE(V) :	220-240V	220-240V	220-240V
FREQUENCY(HZ) :	50HZ	50HZ	50HZ
TEMPERATURE RANGE (C) :	-2 ~ 8c	-17 ~ -22c	-2 ~ 8c & -14 ~ -20c
REFRIGERANT :	R134a	R404a	R134a & R404a
POWER(W) :	400	800	1150
COOLING TYPE :	VENTILATED	VENTILATED	VENTILATED
NET WEIGHT(KGS) :	180	180	180

GLASS DOOR COUNTER CHILLER



MODEL :	TC-GDC-2	TC-GDC-3
DIMENSION(WxDxH MM) :	1360x700x850	1795x700x850
CAPACITY (LITRES) :	280	420
VOLTAGE(V) :	220-240V	220-240V
FREQUENCY(HZ) :	50HZ	50HZ
TEMPERATURE RANGE (C) :	-2 ~ 8c	-2 ~ 8c
REFRIGERANT :	R134a	R134a
COOLING TYPE :	VENTILATED	VENTILATED
POWER(W) :	250	400
NET WEIGHT(KGS) :	100	125

COUNTER CHILLER / FREEZER (LOCAL)



FRUITS



VEGETABLES

CAN BE USE ON :



BOTTLE & TIN



FAN COOLING



GOOD QUALITY



MODEL :	EB-1D/C3	EB-1D/C4	EB-2D/C5
DIMENSION(WxDxH MM) :	920x750x850	1200x750x850	1500x750x850
CAPACITY (LITRES) :	250	300	415
VOLTAGE(V) :	220-240V	220-240V	220-240V
FREQUENCY(HZ) :	50HZ	50HZ	50HZ
TEMPERATURE RANGE (C) :	2 ~ 6c	2 ~ 6c	2 ~ 6c
REFRIGERANT :	R134a	R134a	R134a
COMPRESSOR(HP) :	1/5	1/5	1/4
NET WEIGHT(KGS) :	63	83	90
MODEL :	EB-2D/C6	EB-3D/C7	
DIMENSION(WxDxH MM) :	1800x750x850	2100x750x850	
CAPACITY (LITRES) :	460	550	
VOLTAGE(V) :	220-240V	220-240V	
FREQUENCY(HZ) :	50HZ	50HZ	
TEMPERATURE RANGE (C) :	2 ~ 6c	2 ~ 6c	
REFRIGERANT :	R134a	R134a	
COMPRESSOR(HP) :	1/4	1/4	
NET WEIGHT(KGS) :	95	100	

CAN BE USE ON :



MEAT & SEAFOOD



ICE CREAM

MODEL :	EB-1D/F3	EB-1D/F4	EB-2D/F5
DIMENSION(WxDxH MM) :	920x750x850	1200x750x850	1500x750x850
CAPACITY (LITRES) :	250	300	415
VOLTAGE(V) :	220-240V	220-240V	220-240V
FREQUENCY(HZ) :	50HZ	50HZ	50HZ
TEMPERATURE RANGE (C) :	-14 ~ -20c	-14 ~ -20c	-14 ~ -20c
REFRIGERANT :	R404a	R404a	R404a
COMPRESSOR(HP) :	1/3	1/3	3/8
NET WEIGHT(KGS) :	63	83	90
MODEL :	EB-2D/F6	EB-3D/F7	
DIMENSION(WxDxH MM) :	1800x750x850	2100x750x850	
CAPACITY (LITRES) :	460	550	
VOLTAGE(V) :	220-240V	220-240V	
FREQUENCY(HZ) :	50HZ	50HZ	
TEMPERATURE RANGE (C) :	-14 ~ -20c	-14 ~ -20c	
REFRIGERANT :	R404a	R404a	
COMPRESSOR(HP) :	3/8	1/2	
NET WEIGHT(KGS) :	95	100	

COUNTER CHILLER / FREEZER



FEATURES :

- 1. REVERSIBLE SELF-CLOSING DOOR
- 2. MAGNETIC DOOR GASKETS
- 3. PRE-INSTALLED SHELVES

MODEL :	TC-2D/C4	TC-2D/C5	TC-3D/C6
DIMENSION (WxDxH MM) :	1200x750x850	1500x750x850	1800x750x850
CAPACITY (LITRES) :	290	400	510
VOLTAGE (V) :	220-240V	220-240V	220-240V
FREQUENCY (HZ) :	50HZ	50HZ	50HZ
TEMPERATURE RANGE (C) :	-2 ~ 8c	-2 ~ 8c	-2 ~ 8c
REFRIGERANT :	R134a	R134a	R134a
COOLING TYPE :	VENTILATED	VENTILATED	VENTILATED
POWER (W) :	270	270	270
NET WEIGHT (KGS) :	83	89	96
MODEL :	TC-2D/F4	TC-2D/F5	TC-3D/F6
DIMENSION (WxDxH MM) :	1200x750x850	1500x750x850	1800x750x850
CAPACITY (LITRES) :	290	400	510
VOLTAGE (V) :	220-240V	220-240V	220-240V
FREQUENCY (HZ) :	50HZ	50HZ	50HZ
TEMPERATURE RANGE (C) :	-12 ~ -22c	-12 ~ -22c	-12 ~ -22c
REFRIGERANT :	R404a	R404a	R404a
COOLING TYPE :	VENTILATED	VENTILATED	VENTILATED
POWER (W) :	550	550	550
NET WEIGHT (KGS) :	83	89	96

MODEL :	TC-2D/C4-2	TC-2D/C5-2	TC-3D/C6-2
DIMENSION (WxDxH MM) :	1200x600x850	1500x600x850	1800x600x850
CAPACITY (LITRES) :	220	300	390
VOLTAGE (V) :	220-240V	220-240V	220-240V
FREQUENCY (HZ) :	50HZ	50HZ	50HZ
TEMPERATURE RANGE (C) :	-2 ~ 8c	-2 ~ 8c	-2 ~ 8c
REFRIGERANT :	R134a	R134a	R134a
COOLING TYPE :	VENTILATED	VENTILATED	VENTILATED
POWER (W) :	270	270	270
NET WEIGHT (KGS) :	83	89	96
MODEL :	TC-2D/F4-2	TC-2D/F5-2	TC-3D/F6-2
DIMENSION (WxDxH MM) :	1200x600x850	1500x600x850	1800x600x850
CAPACITY (LITRES) :	220	300	390
VOLTAGE (V) :	220-240V	220-240V	220-240V
FREQUENCY (HZ) :	50HZ	50HZ	50HZ
TEMPERATURE RANGE (C) :	-12 ~ -22c	-12 ~ -22c	-12 ~ -22c
REFRIGERANT :	R404a	R404a	R404a
COOLING TYPE :	VENTILATED	VENTILATED	VENTILATED
POWER (W) :	550	550	550
NET WEIGHT (KGS) :	83	89	96

SANDWICH COUNTER

FEATURES :

- 1.SANDWICH COUNTER IS MADE TO THE HIGHEST STANDARD FROM 304 STAINLESS STEEL BOTH INSIDE AND OUT
- 2.STAINLESS STEEL SANDWICH COUNTER IS A GREAT ADDITION TO ANY COMMERCIAL KITCHEN, WITH ENERGY SAVING SELF-CLOSING DOORS, CASTERS FOR EASY CLEANING BEHIND



MODEL :	TC-SC-4	TC-SC-5	TC-SC-6
DIMENSION(WxDxH MM) :	1200x700x800	1500x700x800	1800x700x800
CAPACITY (LITRES) :	300	370	440
VOLTAGE(V) :	220-240V	220-240V	220-240V
FREQUENCY(HZ) :	50HZ	50HZ	50HZ
TEMPERATURE RANGE (C) :	-5 ~ 5c	-5 ~ 5c	-5 ~ 5c
REFRIGERANT :	R134a	R134a	R134a
COOLING TYPE :	STATIC	STATIC	STATIC
POWER(W) :	200	200	240
NET WEIGHT(KGS) :	77	81	85

DRAWER COUNTER CHILLER



MODEL :	TC-2DW/C	TC-4DW/C
DIMENSION(WxDxH MM) :	1225x762x929	1225x762x929
CAPACITY (LITRES) :	340	340
VOLTAGE(V) :	220-240V	220-240V
FREQUENCY(HZ) :	50HZ	50HZ
TEMPERATURE RANGE (C) :	1 ~ 8c	1~ 8c
REFRIGERANT :	R134a	R134a
COOLING TYPE :	VENTILATED	VENTILATED
POWER(W) :	328	328
NET WEIGHT(KGS) :	110	115

SALADETTE COUNTER



MODEL :	TC-SLT-1365
DIMENSION(WxDxH MM) :	1365x700x970
CAPACITY (LITRES) :	380
VOLTAGE(V) :	220-240V
FREQUENCY(HZ) :	50HZ
TEMPERATURE RANGE (C) :	2 ~ 8c
REFRIGERANT :	R134a
COOLING TYPE :	STATIC
POWER(W) :	300
NET WEIGHT(KGS) :	180

2 DOOR PIZZA COUNTER CHILLER



MODEL :	TC-PC-3832
DIMENSION(WxDxH MM) :	900x700x850
CAPACITY (LITRES) :	300
VOLTAGE(V) :	220-240V
FREQUENCY(HZ) :	50HZ
TEMPERATURE RANGE (C) :	2 ~ 10c
REFRIGERANT :	R134a
COOLING TYPE :	VENTILATED

CAKE SHOWCASE (CURVED GLASS /RECTANGULAR)

CAN BE USE ON :



MODEL :	TC-CS-4	TC-CS-5	TC-CS-6
DIMENSION(WxDxH MM) :	1260x700x1200	1560x700x1200	1800x700x1200
CAPACITY (LITRES) :	235	290	335
VOLTAGE(V) :	220-240V	220-240V	220-240V
FREQUENCY(HZ) :	50HZ	50HZ	50HZ
TEMPERATURE RANGE (C) :	2 ~ 8c	2 ~ 8c	2 ~ 8c
REFRIGERANT :	R290a	R290a	R290a
CURRENT(A) :	3.5	4.2	4.4
POWER(W) :	220	330	330
NET WEIGHT(KGS) :	159	201	284
MODEL :	TC-RCS-1260	TC-RCS-1560	TC-RCS-1860
DIMENSION(WxDxH MM) :	1260x700x1400	1560x700x1200	1860x700x1200
CAPACITY (LITRES) :	280	350	420
VOLTAGE(V) :	220-240V	220-240V	220-240V
FREQUENCY(HZ) :	50HZ	50HZ	50HZ
TEMPERATURE RANGE (C) :	2 ~ 8c	2 ~ 8c	2 ~ 8c
REFRIGERANT :	R290a	R290a	R290a
CURRENT(A) :	3.5	4.2	4.4
POWER(W) :	220	330	330
NET WEIGHT(KGS) :	161	203	286

CURVED / RECTANGULAR DISPLAY COOLER-TABLE TOP

CAN BE USE ON :



MODEL :	TC-CDC-700	TC-CDC-900
DIMENSION(WxDxH MM) :	700x560x670	900x560x670
CAPACITY (LITRES) :	110	130
VOLTAGE(V) :	220-240V	220-240V
FREQUENCY(HZ) :	50HZ	50HZ
TEMPERATURE RANGE (C) :	2 ~ 8c	2 ~ 8c
REFRIGERANT :	R290a	R290a
POWER(W) :	226	242
NO.OF SHELF(PCS) :	2	2
NET WEIGHT(KGS) :	68	70
MODEL :	TC-RDC-700	TC-RDC-900
DIMENSION(WxDxH MM) :	700x560x670	900x560x670
CAPACITY (LITRES) :	120	160
VOLTAGE(V) :	220-240V	220-240V
FREQUENCY(HZ) :	50HZ	50HZ
TEMPERATURE RANGE (C) :	2 ~ 8c	2 ~ 8c
REFRIGERANT :	R290a	R290a
POWER(W) :	226	242
NO.OF SHELF(PCS) :	2	2
NET WEIGHT(KGS) :	68	70

CUBE ICE MACHINE / MODULAR TYPE(CLASSIC)



MODEL :	TC-SK-350P	TC-SK-420P	
DIMENSION(WxDxH MM) :	560x830x1718	560x830x1718	
ICE CAPACITY (KGS) :	125KG/24HR	190KG/24HR	
ICE STORAGE(KGS) :	125	125	
VOLTAGE(V) :	220-240V	220-240V	
FREQUENCY(HZ) :	50HZ	50HZ	
REFRIGERANT :	R404a	R404a	
POWER(W) :	1000	1100	
NET WEIGHT(KGS) :	94	96	
MODEL :	TC-SK-500P	TC-SK-700P	TC-SK-1000P
DIMENSION(WxDxH MM) :	760x830x1718	760x830x1893	760x830x1893
ICE CAPACITY (KGS) :	255KG/24HR	315KG/24HR	455KG/24HR
ICE STORAGE(KGS) :	170	170	170
VOLTAGE(V) :	220-240V	220-240V	220-240V
FREQUENCY(HZ) :	50HZ	50HZ	50HZ
REFRIGERANT :	R404a	R404a	R404a
POWER(W) :	1240	1420	2300
NET WEIGHT(KGS) :	120	122	140

FLAKE ICE MACHINE



MODEL :	TC-FIM-033	TC-FIM-053	TC-FIM-103
DIMENSION(WxDxH MM) :	760x830x1845	760x830x1950	1225x973x2195
ICE CAPACITY (KGS) :	300KG /24HR	500KG /24HR	1000KG /24HR
ICE STORAGE(KGS) :	125	125	315
VOLTAGE(V) :	220-240V	220-240V	220-240V
FREQUENCY(HZ) :	50HZ	50HZ	50HZ
REFRIGERANT :	R404a	R404a	R404a
POWER(W) :	1500	2000	4000
NET WEIGHT(KGS) :	210	283	380

CUBE ICE MACHINE / VERTICAL TYPE(CLASSIC)



MODEL :	TC-SK-120P
DIMENSION(WxDxH MM) :	500x590x853MM
ICE CAPACITY (KGS) :	55KG /24HR
ICE STORAGE(KGS) :	18
VOLTAGE(V) :	220-240V
FREQUENCY(HZ) :	50HZ
REFRIGERANT :	R404a
POWER(W) :	460
NET WEIGHT(KGS) :	50

OPEN CHILLER

CAN BE USE ON :



MODEL :	TC-OC-1580	TC-OC-2080
DIMENSION (WxDxH MM) :	1500x787x2000	2000x787x2000
CAPACITY (LITRES) :	780	970
VOLTAGE(V) :	220-240V	220-240V
FREQUENCY(HZ) :	50HZ	50HZ
TEMPERATURE RANGE(C) :	2 ~ 8c	2 ~ 8c
REFRIGERANT :	R404a	R404a
RATED CURRENT(A) :	10	10
COOLING TYPE :	VENTILATED	VENTILATED
NO.OF SHELF(PCS) :	4	4
NET WEIGHT(KGS) :	350	370

COMBINED ISLAND FREEZER

CAN BE USE ON :



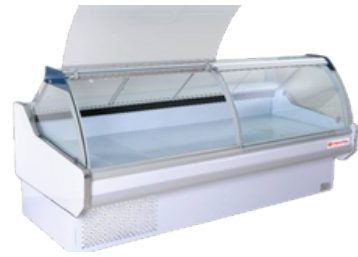
MODEL :	TC-CIF-1800L	TC-CIF-2100L	TC-CIF-2500L
DIMENSION (WxDxH MM) :	1860x875x835	2105x875x835	2507x875x835
CAPACITY (LITRES) :	500	600	750
VOLTAGE(V) :	220-240V	220-240V	220-240V
FREQUENCY(HZ) :	50HZ	50HZ	50HZ
TEMPERATURE RANGE(C) :	-18 ~ -22c	-18 ~ -22c	-18 ~ -22c
DEFROSTING (MANUAL -AUTOMATIC) :	AUTOMATIC / HOT GAS DEFROSTING	AUTOMATIC / HOT GAS DEFROSTING	AUTOMATIC / HOT GAS DEFROSTING
REFRIGERANT :	R404a	R404a	R404a
RATED CURRENT(A) :	2.4	2.1	3.5
COOLING TYPE :	STATIC	STATIC	STATIC
NET WEIGHT(KGS) :	140	160	180

PIZZA DISPLAY



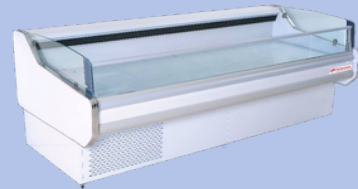
MODEL :	TC-PD-4	TC-PD-5	TC-PD-6
DIMENSION (WxDxH MM) :	1200x335x435	1500x335x435	1800x335x435
CAPACITY (LITRES) :	32	45	52
VOLTAGE(V) :	220-240V	220-240V	220-240V
FREQUENCY(HZ) :	50HZ	50HZ	50HZ
TEMPERATURE RANGE (C) :	2 ~ 10c	2 ~ 10c	2 ~ 10c
REFRIGERANT :	R134a	R134a	R134a
COOLING TYPE :	STATIC	STATIC	STATIC
POWER(W) :	170	170	170
FOOD PAN(PCS) :	5	7	8
NET WEIGHT(KGS) :	38	43	48

DELI SHOWCASE



MODEL :	TC-DC-2000	TC-DC-2500
DIMENSION(WxDxH MM) :	2000x1180x1280	2500x1180x1280
CAPACITY (LITRES) :	151	192
VOLTAGE(V) :	220-240V	220-240V
FREQUENCY(HZ) :	50HZ	50HZ
TEMPERATURE RANGE(C) :	2 ~ 8c	2 ~ 8c
REFRIGERANT :	R404a	R404a
POWER CONSUMPTION (KW/24HR) :	8.5	7.16
COOLING TYPE :	VENTILATED	VENTILATED
NET WEIGHT(KGS) :	210	250

FRESH MEAT CHILLER



MODEL :	TC-FMC-20	TC-FMC-25
DIMENSION(WxDxH MM) :	2000x1180x900	2500x1180x900
CAPACITY (LITRES) :	160	201
VOLTAGE(V) :	220-240V	220-240V
FREQUENCY(HZ) :	50HZ	50HZ
TEMPERATURE RANGE(C) :	-2 ~ 8c	2 ~ 8c
REFRIGERANT :	R404a	R404a
POWER CONSUMPTION (KW/24HR) :	13.76	28.4
COOLING TYPE :	VENTILATED	VENTILATED
NET WEIGHT(KGS) :	180	230

SERVICE OVER COUNTER



MODEL :	TC-SOC-1955
DIMENSION(WxDxH MM) :	1955x940x1200MM
TEMPERATURE RANGE(C) :	0c ~ 5c
REFRIGERANT :	R290
EFFECTIVE VOLUME :	380L
INPUT POWER :	440

COLD ROOM



JUICE DISPENSER



MODEL :	VT-JD12X1	VT-JD12X2	VT-JD12X3
DIMENSION(WxDxH MM) :	250X386X728MM	500X386X728MM	725X386X728MM
CAPACITY (LITRES) :	12L X 1	12L X 2	12L X 3

STAINLESS STEEL

EQUIPMENT



S/S TEA COUNTER WITH GLASS OVERSHELF S/S TEA COUNTER WITH SINK



MODEL	DIMENSION(MM)
EBM-TC-42-2	1067x760x840
EBM-TC-48-2	1220x760x840
EBM-TC-60-2	1525x760x840
EBM-TC-72-2	1830x760x840



MODEL	DIMENSION(MM)
EBM-TCS-60	1525x760x840
EBM-TCS-72	1830x760x840

S/S CHICKEN RICE STALL



MODEL	DIMENSION(MM)
EBM-CS48	1220x760x840
EBM-CS60	1525x760x840
EBM-CS72	1830x760x840

S/S MEE STALL - 1 TIER



MODEL	DIMENSION(MM)
EBM-MS-1	1120x660x840

S/S MEE STALL - 2 TIER



MODEL	DIMENSION(MM)
EBM-MS-2	1120x660x840

S/S ABC STALL



MODEL	DIMENSION(MM)
EBM-ABC-42	1067x710x840

S/S DIPPED ROTI CANAI STALL WITH GLASS SHELF



MODEL	DIMENSION(MM)
EBM-RCS-60D	1525x760x840
EBM-RCS-72D	1830x760x840

S/S BURGER STALL W/HOT PLATE



MODEL	DIMENSION(MM)
EBM-BS-48	1220x710x840
EBM-BS-60	1525x710x840

S/S MEE GORENG STALL WITH FAN



MODEL	DIMENSION(MM)
EBM-MGS-28	710x710x1830
EBM-MGS-54	1370x710x840

S/S MEE GORENG STALL WITHOUT FAN



MODEL	DIMENSION(MM)
EBM-MGS-48	1220x710x840

S/S SEAFOOD DISPLAY STALL



MODEL	DIMENSION(MM)
EBM-SD-36	915x610x840

S/S MEE STALL CABINET



MODEL	DIMENSION(MM)
EBM-MSC-44	1120x660x840
EBM-MSC-48	1220x760x840
EBM-MSC-60	1525x760x840
EBM-MSC-72	1830x760x840

S/S BAIN MARIE WITH CABINET



MODEL	DIMENSION(MM)
EBM-BM3	1220x760x840
EBM-BM4	1525x760x840
EBM-BM5	1830x760x840
EBM-BM6	2135x760x840
EBM-BM7	2440x760x840

S/S BAIN MARIE WITH 1 TIER GLASS OVERSHELF



MODEL	DIMENSION(MM)
EBM-BM3-1	1220x760x840
EBM-BM4-1	1525x760x840
EBM-BM5-1	1830x760x840
EBM-BM6-1	2135x760x840
EBM-BM7-1	2440x760x840

S/S BAIN MARIE W/ 2 TIER GLASS OVERSHELF



MODEL	DIMENSION(MM)
EBM-BM3-2	1220x760x840
EBM-BM4-2	1525x760x840
EBM-BM5-2	1830x760x840
EBM-BM6-2	2135x760x840
EBM-BM7-2	2440x760x840

S/S COFFEE STEAMER WITH CUP HOLDER



MODEL	DIMENSION(MM)
EBM-CS-C	610x381x840

S/S GAS PAU STEAMER -6 TIER



MODEL	DIMENSION(MM)
EBM-GPS-6	610x559x1525

**S/S 1 BURNER KWALI RANGE
-ECONOMY TYPE**



MODEL	DIMENSION(MM)
EBM-KR-1	610x610x740

**S/S 2 BURNER KWALI RANGE
-ECONOMY TYPE**



MODEL	DIMENSION(MM)
EBM-KR-2	1067x635x737

**S/S 3 BURNER KWALI RANGE
-ECONOMY TYPE**



MODEL	DIMENSION(MM)
EBM-KR-3	1830x635x737

**S/S 1 BURNER KWALI RANGE
-HEAVY DUTY**



MODEL	DIMENSION(MM)
EBM-KR-1H	715x760x760

**S/S 2 BURNER KWALI RANGE
-HEAVY DUTY**



MODEL	DIMENSION(MM)
EBM-KR-2H	1380x830x730

**S/S 3 BURNER KWALI RANGE
-HEAVY DUTY**



MODEL	DIMENSION(MM)
EBM-KR-3H	2135x813x710

**S/S BURNER KWALI RANGE
WITH SOUP RING**



MODEL	DIMENSION(MM)
EBM-2KR-1S	2135x915x710
EBM-3KR-1S	2743x915x710
EBM-4KR-1S	3048x915x710

S/S FISH STEAMER



MODEL	DIMENSION(MM)
EBM-FS	712x790x1728
EBM-FS-4	710x635x1677

S/S TIM SUM STEAMER



MODEL	DIMENSION(MM)
EBM-TS-1	760x760x840
EBM-TS-2	1525x760x840

S/S STOCK POT



MODEL	DIMENSION(MM)
EBM-SP-1	610x610x508
EBM-SP-2	1220x610x508

S/S BURNER STAND-1 TIER



MODEL	DIMENSION(MM)
EBM-BS32-1	813x458x660

S/S BURNER STAND-2 TIER



MODEL	DIMENSION(MM)
EBM-BS32-3	813x458x660

S/S WORKTABLE - 2 TIER



MODEL	DIMENSION(MM)
EBM-WT3630-2	915x760x840
EBM-WT4830-2	1220x760x840
EBM-WT6030-2	1525x760x840
EBM-WT7230-2	1830x760x840
EBM-WT8430-2	2135x760x840

S/S WORKTABLE - 3 TIER



MODEL	DIMENSION(MM)
EBM-WT3630-2	915x760x840
EBM-WT4830-2	1220x760x840
EBM-WT6030-2	1525x760x840
EBM-WT7230-2	1830x760x840
EBM-WT8430-2	2135x760x840

S/S WORKTABLE W/BACK SPLASH



MODEL	DIMENSION(MM)
EBM-WT3620-2	915x508x660

S/S 4 TIER RACK- SOLID



MODEL	DIMENSION(MM)
EBM-4TR-44	1120x508x1525
EBM-4TR-48	1220x508x1525
EBM-4TR-60	1525x508x1525
EBM-4TR-72	1830x508x1525

S/S 4 TIER RACK- SLATTED



MODEL	DIMENSION(MM)
EBM-SR-44S	1120x508x1525
EBM-SR-48S	1220x508x1525
EBM-SR-60S	1525x508x1525
EBM-SR-72S	1830x508x1525

S/S 3 TIER SAUCE RACK



MODEL	DIMENSION(MM)
EBM-3SR-29	737x330x760

S/S SINGLE BOWL SINK



MODEL	DIMENSION(MM)
EBM-SBS-30	760x760x840

S/S SINGLE BOWL SINK TABLE



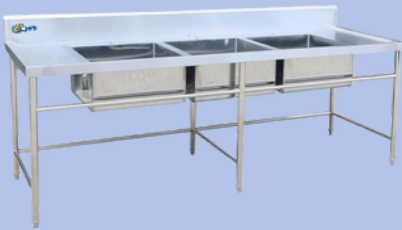
MODEL	DIMENSION(MM)
EBM-SBS-48	1220x760x840
EBM-SBS-60	1525x760x840
EBM-SBS-72	1830x760x840
EBM-SBS-84	2135x760x840

S/S DOUBLE BOWL SINK TABLE



MODEL	DIMENSION(MM)
EBM-DBS-48	1220x760x840
EBM-DBS-60	1525x760x840
EBM-DBS-72	1830x760x840
EBM-DBS-84	2135x760x840

S/S TRIPLE BOWL SINK TABLE



MODEL	DIMENSION(MM)
EBM-TBS-84	2135x760x840

S/S WASHING TABLE



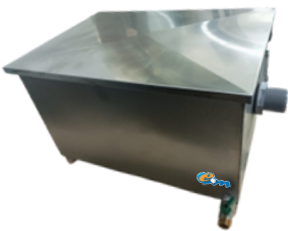
MODEL	DIMENSION(MM)
EBM-WST-48	1220x760x840
EBM-WST-60	1525x760x840
EBM-WST-72	1830x760x840
EBM-WST-84	2135x760x840

S/S DOUBLE BOWL SINK C/W OVERSHELF



MODEL	DIMENSION(MM)
EBM-DBS-48-2S	1220x760x840
EBM-DBS-60-2S	1525x760x840
EBM-DBS-72-2S	1830x760x840
EBM-DBS-84-2S	2135x760x840

S/S GREASE TRAP



MODEL	DIMENSION(MM)
EBM-GT-18	458x305x305

S/S POT RACK



MODEL	DIMENSION(MM)
EBM-PR	508x508x840

S/S SOUP POT - EMPTY / PARTITION



MODEL	DIMENSION(MM)
EBM-SP-E	381x381
EBM-SP-P	381x381

S/S FOOD PAN



MODEL	DIMENSION(MM)
FP1/1-2.5	530x325x65
FP1/1-4	530x325x100
FP1/1-6	530x325x150
FP1/1-8	530x325x200

MODEL	DIMENSION(MM)
FP1/2-2.5	325x265x65
FP1/2-4	325x265x100
FP1/2-6	325x265x150
FP1/2-8	325x265x200

MODEL	DIMENSION(MM)
FP1/3-2.5	325x176x65
FP1/3-4	325x176x100
FP1/3-6	325x176x150
FP1/3-8	325x176x200

MODEL	DIMENSION(MM)
FP1/4-2.5	265x162x65
FP1/4-4	265x162x100
FP1/4-6	265x162x150
FP1/4-8	265x162x200

MODEL	DIMENSION(MM)
FP1/6-2.5	176x165x65
FP1/6-4	176x165x100
FP1/6-6	176x165x150
FP1/6-8	176x165x200

MODEL	DIMENSION(MM)
FP1/9-2.5	176x108x65
FP1/9-4	176x108x100
FP1/9-6	176x108x150

S/S FOOD PAN COVER



MODEL	DIMENSION(MM)
FP1/1-C	530x325
FP1/2-C	325x265
FP1/3-C	325x176
FP1/4-C	265x162
FP1/6-C	176x162
FP1/9-C	176x108

S/S PERFORATED PAN



MODEL	DIMENSION(MM)
FP1/1-2.5P	530x325x65
FP1/1-4P	530x325x100
FP1/1-6P	530x325x150
FP1/1-8P	530x325x200
FP1/2-2.5P	325x265x65
FP1/2-4P	325x265x100
FP1/2-6P	325x265x150
FP1/2-8P	325x265x200
FP1/3-2.5P	325x176x65
FP1/3-4P	325x176x100
FP1/3-6P	325x176x150
FP1/3-8P	325x176x200

S/S FOOD TROLLEY - 2 TIER



MODEL	DIMENSION(MM)
EBM-FT2-26	660x458x760
EBM-FT2-36	915x610x840

S/S FOOD TROLLEY - 3 TIER



MODEL	DIMENSION(MM)
EBM-FT3-26	660x458x760
EBM-FT3-36	915x610x840

POTATO PEELER MACHINE



MODEL	VT-PP-15
DIMENSION(MM)	640x520x1220
CURRENT	230V/50HZ/750W
OUTPUT CAPACITY/H	300KGS
FOOD VOLUME(L)	20
BARREL VOLUME(L)	29
NET WEIGHT(KG)	61

ELECTRICAL

EQUIPMENT



ELECTRICAL WATER BOILER (50L) -TABLE TOP



MODEL	DIMENSION(MM)
EBM-EWB-50L	508x407x5

ELECTRICAL WATER BOILER (50L) -FREE STANDING



MODEL	DIMENSION(MM)
EBM-EWB-50L	508x407x1525

CURVED GLASS WARMING SHOWCASE



MODEL	VT-CGWS-660
DIMENSION(MM)	660x490x615
CURRENT	220V/50HZ/1.15KW
NET WEIGHT(KG)	37

FOOD WARMER



MODEL	VT-EFW-640
DIMENSION(MM)	640x360x530
CURRENT	220V/50HZ/1KW
NET WEIGHT(KG)	22

FOOD WARMER



MODEL	VT-FW-310
DIMENSION(MM)	330x560x500
CURRENT	220V/50HZ/1KW
NET WEIGHT(KG)	7.5

DISPLAY WARMER



MODEL	VT-DW-660	VT-DW-950
DIMENSION(MM)	660x466x610	950x420x740
CURRENT	220V/50HZ/0.8KW	220V/50HZ/1.2KW
NET WEIGHT(KG)	21	30

ELECTRICAL HOLDING CABINET -9 PANS



MODEL	EBM-EHC
DIMENSION(MM)	738x911x1810
CURRENT	240V/50HZ/2.4KW

FEATURES :

- 1.HIGH HOLDING TEMPERATURE (MAX 99 DEG C) FORBIDS BACTERIA SURVIVAL AND KEEPS YOUR FOOD FRESH & HIRGIENE ,MEETING HACCP REQUIREMENT
2. HUMIDITY COMPENSATION : FOOD CAN BE MAINTAINED FRESH & MOIST FOR LONGER TIME
- 3.FORCED CONVECTION ENSURE THERMAL BALANCE WITHIN THE CABINET



PIZZA OVEN



MODEL	EBM-EPO-1	EBM-EPO-2
DIMENSION(MM)	900x820x430	900x820x750
CURRENT	220V/50HZ/4.2KW	380V/50HZ/8.4KW
NET WEIGHT(KG)	48	90

ELECTRICAL CONVECTION OVEN



MODEL	EBM-ECO-1A
DIMENSION(MM)	595x530x570
CURRENT	220V/50HZ/2.2KW
NET WEIGHT(KG)	39

ELECTRIC BAKING OVEN



MODEL	EBM-YXD-10SS	EBM-YXD-20CI	EBM-YXD-40CI	EBM-YXD-60CI
DIMENSION(MM)	920x640x440	1220x820x530	1220x820x1260	1220x820x1530
CURRENT	220V/50HZ/3KW	220V/50HZ/6.6KW	415V/50HZ/13KW	415V/50HZ/16.9KW
LAYER,TRAY(PCS)	1 LAYER , 1 TRAY	1 LAYER , 2 TRAY	2 LAYER , 4 TRAY	3 LAYER , 6 TRAY
NET WEIGHT(KG)	68	77	148	198

ELECTRICAL PAU STEAMER



MODEL	VT-EPS-450
DIMENSION(MM)	420x480x810
CURRENT	220V/50HZ/1.1KW
NET WEIGHT(KG)	20

ELECTRICAL GRIDDLE



MODEL	EBM-EG-818
DIMENSION(MM)	500x450x230
CURRENT	220V/50HZ/3KW
NET WEIGHT(KG)	17

ELECTRIC SALAMANDA



MODEL	EBM-ES936
DIMENSION(MM)	570x340x270
CURRENT	220V/50HZ/2.3KW
NET WEIGHT(KG)	9



ELECTRICAL DEEP FRYER WITH FAUCET



MODEL	VT-HDF-8A	VT-HDF-8A-2
DIMENSION(MM)	314x533x433	630x594x480
CURRENT	220-240V/50HZ/3.25KW	220-240V/50HZ/6.5KW
CAPACITY(L)	8	8+8
NET WEIGHT(KG)	8	15

POPCORN MACHINE



MODEL	VT-PM-802
DIMENSION(MM)	560x420x740
CURRENT	220V/50HZ/1.4KW
NET WEIGHT(KG)	20

ELECTRICAL DEEP FRYER



MODEL	VT-DF81	VT-DF82
DIMENSION(MM)	265x425x280	530x425x880
CURRENT	220V/50HZ/2.2KW	220V/50HZ/2.2+2.2KW
CAPACITY(L)	6	6+6
NET WEIGHT(KG)	4	8

ELECTRIC CHICKEN ROTISSERIE



MODEL	VT-ECR-266
DIMENSION(MM)	810x630x610
CURRENT	220V/50HZ/4.5KW
NET WEIGHT(KG)	65

ELECTRIC CREPE MAKER



MODEL	VT-ECM-1	VT-ECM-2
DIMENSION(MM)	450x485x240	860x485x240
CURRENT	220V/50HZ/3KW	220V/50HZ/6KW
NET WEIGHT(KG)	19	36

CONVEYOR TOASTER



MODEL	EBM-CT-150
DIMENSION(MM)	288x418x387
CURRENT	220V/50HZ/1.5KW
NET WEIGHT(KG)	14

FEATURES :

- 1.FLEXIBLE ,CAN BE DIRECTLY ON WORK STATION OR TABLE WITH A BEAUTIFUL APPEARANCE.
- 2.HIGH THERMAL EFFICIENCY ,LOW CONSUMPTION OF ELECTRICITY ,ENERGY SAVING .
- 3.IN TEMPERATURE CONTROL ,THE ELECTRIC HEATING AND SPECIAL CONTROL ALL THERMOMETER ,ORIGINAL DEVICE PLUG-AND-SOCKER CONNECTION ,AND INTERCHANGE-ABLE ,STABLE PERFORMANCE ,MAINTENANCE IS MORE CONVENIENT .



ELECTRIC NOODLE BOILER



MODEL	VT-MP-4H	VT-MP-6H
DIMENSION(MM)	430x600x340	600x600x340
CURRENT	220V/50HZ/4KW	220V/50HZ/6KW
NET WEIGHT(KG)	14	20

ELECTRIC TAKOYAKI MACHINE



MODEL	VT-ETM-767
DIMENSION(MM)	450x450x230
CURRENT	220V/50HZ/4KW
NET WEIGHT(KG)	13

ELECTRIC NOODLE BOILER -FREE STANDING



MODEL	EBM-ENB4-FS	EBM-ENB6-FS
DIMENSION(MM)	430x700x850	600x700x850
CURRENT	220V/50HZ/4KW	220V/50HZ/6KW
NET WEIGHT(KG)	21	26

SOUP KETTLE



MODEL	VT-SK
DIMENSION(MM)	355x355x410
CURRENT	230V/50HZ/400KW
CAPACITY (L)	10
NET WEIGHT(KG)	4.63

WAFFLE BAKER



MODEL	VT-WB-1	VT-WB-2
DIMENSION(MM)	250x380x270	500x380x270
CURRENT	220V/50HZ/1KW	220V/50HZ/2KW
NET WEIGHT(KG)	5.3	10

ELFRAMO DISHWASHER

ELECTROMECHANICAL CONTROLS :

- 1.FRAME AND BODY IN INOX AISI 304.
- 2.SELF-DRAINING TANK,S/S ROTATING WASHING AND RINSING ARMS.
- 3.BOILER AND TANK HEATING ELEMENT IN INCOLOY 800.
- 4.BOILER HOLDING DEVICE.
- 5.PROVISION FOR SINGLE-PHASE POWER SUPPLY.
- 6.MANUAL REMOVAL OF ALL COMPONENTS OF THE TANK
- 7.INSULATED BOILER.



MODEL	EBM-ED-650
DIMENSION(MM)	650x755x450
POWER	400V/50HZ/3PH
BASKET CAPACITY	22 PLATES
CYCLE LENGTHS(MM)	120/180
NET WEIGHT(KG)	115



CONTACT TOASTER



MODEL	VT-CT-1	VT-CT-2
DIMENSION(MM)	310x370x210	570x370x210
CURRENT	220V/50HZ/1.8KW	220V/50HZ/3.6KW
NET WEIGHT(KG)	12.3	27

VEGETABLE CUTTER



MODEL	VT-VC300
DIMENSION(MM)	565x295x565
CURRENT	230V/50HZ/550W
NET WEIGHT(KG)	22.5

ELECTRICAL WATER BOILER



MODEL	VT-WB-20A	VT-WB-30A	VT-WB-40A
DIMENSION(MM)	260x380x550	390x390x420	390x390x523
CURRENT	230V/50HZ/2500W	230V/50HZ/3000W	230V/50HZ/3000W
CAPACITY(L)	20	30	40
NET WEIGHT(KG)	3.6	4.2	4.6

SAUCE WARMER



SAUCE WARMER WITH FAUCET



SAUCE WARMER WITH ROUND POT



MODEL	VT-SW
DIMENSION(MM)	595x350x280
CURRENT	230V/50HZ/1200W
NET WEIGHT(KG)	7.4

MODEL	VT-SW-F
DIMENSION(MM)	590x350x280
CURRENT	230V/50HZ/1200W
NET WEIGHT(KG)	9.72

MODEL	VT-SW-RP
DIMENSION(MM)	595x350x280
CURRENT	230V/50HZ/1200W
NET WEIGHT(KG)	7.4

MEAT SLICER (CLASSIC TYPE)



MODEL	VT-MS10	VT-MS12
DIMENSION(MM)	540x460x400	580x520x500
CURRENT	230V/50HZ/150W	230V/50HZ/250W
BLADE DIAMETER(MM)	250	300
THICKNESS(MM)	0.2-12	0.2-15
WIDTH(MM)	180	200
NET WEIGHT(KG)	17	23

MEAT SLICER (FOR NON FROZEN MEAT)



MODEL	VT-MS300C
DIMENSION(MM)	520x600x580
CURRENT	230V/50HZ/150W
BLADE DIAMETER(MM)	300
THICKNESS(MM)	0.2-15
WIDTH(MM)	215
NET WEIGHT(KG)	35

MEAT SLICER (LUXURY TYPE)



MODEL	VT-MS10L	VT-MS12L
DIMENSION(MM)	575x465x415	615x525x500
CURRENT	230V/50HZ/150W	230V/50HZ/250W
BLADE DIAMETER(MM)	250	300
THICKNESS(MM)	0.2-12	0.2-15
WIDTH(MM)	180	200
NET WEIGHT(KG)	17	23

FOOD CUT UP MACHINE



MODEL	EBM-QXP5
DIMENSION(MM)	530x420x540
CURRENT	220V/50HZ/550W
BOWL DIAMETER(MM)	350
BOWL VOLUME(L)	5
SLICE SPEED(RPM)	1400
PRODUCTION(KG/H)	50
NET WEIGHT(KG)	58

MEAT MINCER



MODEL	VT-HFM-8	VT-HFM-12
DIMENSION(MM)	535x260x420	602x262x460
CURRENT	230V/50HZ/250W	230V/50HZ/550W
NET WEIGHT(KG)	14	18.4

MEAT MINCER



MODEL	VT-HM-12
DIMENSION(MM)	602x262x460
CURRENT	230V/50HZ/850W
NET WEIGHT(KG)	21.5



BONE SAW MACHINE



MODEL	VT-BSM-1650	VT-BSM-2020
DIMENSION(MM)	551x566x1023	746x671x1743
CURRENT	230V/50HZ/750W	380V/50HZ/1.5KW
WHEEL DIAMETER(MM)	210	250
SAW LENGTH(MM)	1650	2020
NET WEIGHT(KG)	37	116

BREAD SLICER



MODEL	EBM-MQ31
DIMENSION(MM)	680x780x780
CURRENT	220V/50HZ/250W
NUMBER OF SLICE(PC)	32
THICKNESS(MM)	12
NET WEIGHT(KG)	70

FOOD MIXER -GEAR DRIVE



MODEL	EBM-ST-B10B	EBM-ST-B20B	EBM-ST-B30B	EBM-ST-B40B
DIMENSION(MM)	450x360x606	520x420x760	545x440x882	620x630x1011
CURRENT	220V/50HZ/0.45KW	220V/50HZ/0.75KW	220V/50HZ/1.1KW	380V/50HZ/1.5KW
FLOUR(KG)	2	3	4	5
BOWL(L)	10	20	30	40
NET WEIGHT(KG)	56	73	90	150

FOOD MIXER - BELT DRIVE (MADE IN TAIWAN)



MODEL	EBM-ST-10I	EBM-ST-20I	EBM-ST-30I	EBM-ST-40I
DIMENSION(MM)	450x432x680	835x525x500	620x630x1011	637x630x1011
CURRENT	220V/50HZ/0.75KW	220V/50HZ/1KW	220V/50HZ/1.5KW	220V/50HZ/1.75KW
FLOUR(KG)	2	4	6	8
BOWL(L)	10	20	30	40
NET WEIGHT(KG)	58	82	148	153



GAS

EQUIPMENT



GAS WATER BOILER (50L) -TABLE TOP



MODEL	DIMENSION(MM)
EBM-GWB-50L	508x407x508

GAS WATER BOILER (50L) -FREE STANDING



MODEL	DIMENSION(MM)
EBM-GWB-50L	508x407x1525

GAS NOODLE BOILER-TABLE TOP



MODEL	VT-GNB-600TT
DIMENSION(MM)	600x630x410
BTU	32000
GAS TYPE	LPG
NET WEIGHT(KG)	22

GAS NOODLE BOILER-FREE STANDING



MODEL	VT-GNB4-FS	VT-GNB6-FS
DIMENSION(MM)	430x700x890	600x700x890
BTU	19000	29000
GAS TYPE	LPG	LPG
NET WEIGHT(KG)	21	26

GAS SALAMANDA



MODEL	VT-BBQ-U4	VT-BBQ-U6
DIMENSION(MM)	690x490x610	880x440x610
TOTAL BTU/H	28000	36000
GAS TYPE	LPG	LPG
NET WEIGHT(KG)	33	42

GAS CHICKEN ROTISSERIE-TABLE TOP



MODEL	VT-GCR-366
DIMENSION(MM)	810x630x610
BTU	28000
NET WEIGHT(KG)	63



GAS BAKING OVEN



MODEL	EBM-YXY-12ASS	EBM-YXY-20ASS	EBM-YXY-40ASS	EBM-YXY-60ASS
DIMENSION(MM)	900x960x570	1240x870x550	1240x870x1050	1240x870x1510
TEMPERATURE(C)	0-300	0-300	0-300	0-300
LAYER,TRAY(PCS)	1 LAYER , 1 TRAY	1 LAYER , 2 TRAY	2 LAYER , 4 TRAY	3 LAYER , 6 TRAY
NET WEIGHT(KG)	63	120	220	290

GAS KEBAB MACHINE



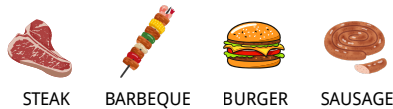
MODEL	VT-GKM-3	VT-GKM-4
DIMENSION(MM)	540x630x800	540x630x950
TOTAL BTU/H	39000	53000
BURNER	3	4
NET WEIGHT(KG)	23	27

ELECTRICAL & GAS FRYER



MODEL	EBM-GF4C
DIMENSION(MM)	393x800x910
INPUT RATING	115.000BTU/H(34KW)
FLY AREA (MM)	353x355

GAS CHAR BROILER



MODEL	VT-CB-24	VT-CB-36	VT-CB-48
TABLE TOP DIMENSION(MM)	610x701x386	915x701x386	1220x701x386
FREE STANDING DIMENSION(MM)	610x701x850	915x701x850	1220x701x850
GAS TYPE	NG/LPG	NG/LPG	NG/LPG
TOTAL BTU/H	70000	105000	140000
NET WEIGHT(KG)	114	161	205

GAS OPEN BURNER



SIZZLING



CLAYPOT



- 1.STAINLESS STEEL STRUCTURE , DURABLE MATERIAL ,CORROSION-RESISTANT AND EAST TO WASH
- 2.SIMPLE AND REASONABLE STRUCTURE , EASY TO MANIPULATE AND MAINTAIN
- 3.INVESTMENT CASTING BURNERS ,WITH STABLE FIRE AND STANDBY PILOT
- 4.HEAVY DUTY IRON-CASTED GRATE ,AND STRONG BEARING PERFORMANCE
- 5.INDEPENDENTLY MANUAL CONTROL TO SAVE THE ENERGY

MODEL	VT-OB-2	VT-OB-4N	VT-OB-6N
TABLE TOP DIMENSION(MM)	305x701x333	610x701x333	915x701x333
FREE STANDING DIMENSION(MM)	305x701x850	610x701x850	915x701x850
GAS TYPE	NG/LPG	NG/LPG	NG/LPG
TOTAL BTU/H	50000	100000	150000
NET WEIGHT(KG)	55	97	137

GAS CHAR ROCK BROILER



STEAK



BARBEQUE



BURGER



SAUSAGE



- 1.STAINLESS STEEL STRUCTURE , DURABLE MATERIAL ,CORROSION-RESISTANT AND EAST TO WASH
- 2.SIMPLE AND REASONABLE STRUCTURE , EASY TO MANIPULATE AND MAINTAIN
- 3.HIGH EFFICIENT STAINLESS STEEL BURNER ,PILOT STANDBY
- 4.THICK STAINLESS STEEL RADIANT PLATE , QUICK AND EVENLY HEATING
- 5.IRON-CASTED BARBEQUE RACK TO MAINTAIN THERMAL INERTIA
- 6.INDEPENDENTLY MANUAL CONTROL TO SAVE THE ENERGY
- 7.ADJUSTABLE RACK HANGING BOARD ,ALTERNATIVE TO BARBEQUE GEAR

MODEL	VT-CRB-24	VT-CRB-36N	VT-CRB-48
TABLE TOP DIMENSION(MM)	610x701x386	915x701x386	1220x701x386
FREE STANDING DIMENSION(MM)	610x701x850	915x701x850	1220x701x850
GAS TYPE	NG/LPG	NG/LPG	NG/LPG
TOTAL BTU/H	70000	105000	140000
NET WEIGHT(KG)	137	183	243

GAS GRIDDLE



GRILL FISH



STEAK



BARBEQUE



BURGER



- 1.STAINLESS STEEL STRUCTURE , DURABLE MATERIAL ,CORROSION-RESISTANT AND EAST TO WASH
- 2.SIMPLE AND REASONABLE STRUCTURE , EASY TO MANIPULATE AND MAINTAIN
- 3.HIGH EFFICIENT STAINLESS STEEL BURNER ,PILOT STANDBY
- 4.THICK GRILL ,WITH EXCELLENT HEAT STORAGE PERFORMANCE AND EVENLY HEATING
- 5.INDEPENDENTLY MANUAL CONTROL TO SAVE THE ENERGY

MODEL	VT-GG-12	VT-GG-24	VT-GG-36N	VT-GG-48
TABLE TOP DIMENSION(MM)	310x761x412	610x726x386	915x726x386	1220x726x386
FREE STANDING DIMENSION(MM)	310x761x850	610x726x850	915x726x850	1220x726x850
GAS TYPE	NG/LPG	NG/LPG	NG/LPG	NG/LPG
TOTAL BTU/H	30000	60000	90000	120000
NET WEIGHT(KG)	45	161	232	291



GAS GRIDDLE WITH OVEN



GAS GRIDDLE OVEN WITH 2 OPEN BURNER



MODEL	VT-24G	VT-24G-2B
DIMENSION(MM)	610x840x1455	915x788x1458
NUMBER OF BURNERS	2 & 1	2 & 2 & 1
GAS TYPE	NG/LPG	NG/LPG
TOTAL BTU/H(GRIDDLE /OVEN)	48000 / 24000	46000/48000 / 27000
NET WEIGHT(KG)	367	479

GAS GRIDDLE OVEN WITH 4 OPEN BURNER



MODEL	VT-4B-12G
DIMENSION(MM)	915x788x1458
NUMBER OF BURNERS	4 & 1 & 1
GAS TYPE	NG/LPG
TOTAL BTU/H(OPEN BURNER/GRIDDLE /OVEN)	92000/21000 / 27000
NET WEIGHT(KG)	462

GAS OPEN BURNER WITH OVEN



GAS FRYER



MODEL	VT-OB40	VT-OB60
DIMENSION(MM)	610x830x900	915x830x900
TOTAL BTU/H	151000	211000
GAS TYPE	NG/LPG	NG/LPG
NET WEIGHT(KG)	132	167

MODEL	VT-GF-90
DIMENSION(MM)	394x767x1182
GAS TYPE	LPG
TOTAL BTU/H	90000
NET WEIGHT(KG)	65



GAS DEEP FRYER -HEAVY DUTY

MODEL	VT-GDF-40	VT-GDF-75
DIMENSION(MM)	396x765x1128	536x765x1128
TOTAL BTU/H	90000	150000
GAS TYPE	NG/LPG	NG/LPG
NET WEIGHT(KG)	131	168
NUMBER OF BURNER	3	5



GAS TEMPURA FRYER-FREE STANDING

MODEL	VT-MPT-18CJB	VT-MPT-23CJB
DIMENSION(MM)	450x600x970	550x600x970
CAPACITY(L)	18	23
GAS TYPE	LPG	LPG
NET WEIGHT(KG)	30	38

GAS DEEP FRYER - TABLE TOP



MODEL	VT-GDF-1	VT-GDF-2
DIMENSION(MM)	290x520x460	580x520x460
CAPACITY(L)	6	6+6
GAS TYPE	LPG	LPG
NET WEIGHT(KG)	10	20

GAS TEMPURA FRYER-TABLE TOP



MODEL	VT-AT-15L	VT-AT-17L
DIMENSION(MM)	420x650x450	500x650x450
CAPACITY(L)	15	17
GAS TYPE	LPG	LPG
NET WEIGHT(KG)	18	20

CATERING EQUIPMENT



BUFFET JUICE DISPENSER



MODEL

	VT-JD1	VT-JD2	VT-JD3
DIMENSION(MM)	350x260x580	350x540x580	350x820x580
CAPACITY(L)	8	2 X 8	3 X 8

CEREAL DISPENSER



CHAFING DISH



OBLONG CHAFING DISH



MODEL	VT-CD-360	MODEL	DIMENSION(MM)	MODEL	DIMENSION(MM)
DIMENSION(MM)	360x230x630	VT-CD1	660x490x460	EBM-GWB-50L	508x407x1525
CAPACITY (L)	7.5	VT-CD2	600x340x350		

JUICE DISPENSER



SERVICE TROLLEY



MODEL	VT-JD12X1	VT-JD12X2	VT-JD12X3	MODEL	DIMENSION(MM)
DIMENSION(MM)	250x386x728	500x386x728	725x386x728	EBM-ST-900	900x460x950
CAPACITY(L)	12 X1	12 X 2	12 X 3		





**COMMERCIAL KITCHEN
DESIGN & PLANNING**



EXHAUST DUCTING



S/S KITCHEN EQUIPMENT



COMMERCIAL REFRIGERATIONS



**FOOD SERVICE
EQUIPMENT**



**ELECTRIC & GAS
EQUIPMENT**



COLD ROOM

EASY BEST MARKETING SDN BHD

**NO.37 ,JALAN SG.BESI INDAH 5/2 ,TAMAN SG.BESI INDAH ,43300 SERI KEMBANGAN ,
SELANGOR DARUL EHSAN ,MALAYSIA .**



+603-8943 5818



EASY BEST MARKETING SDN BHD



**+012-664 8870
+6012-393 6313**



www.easybest.com.my