



9071 Smart Vibration Meter BNC Cable Accelerometer with Magnet

BENEFITS

- Built-in ISO Alarms
- Find machine faults before they stop your machine
- Increase productivity and lower maintenance costs

FEATURES

- Full Color LED Display
- Standard Cable mounted accelerometer with magnet
- ISO built-in Alarms
- Easily identify bearing problems with BDU Reading
- Easily identify machine faults with built-in band filters:
- 1X (unbalance)
- 2X (misalignment)
- 3X (looseness)
- 800 line FFT (spectrum)
- Ruggedized IP67 case
- 3-year Limited Warranty

PUT THE TPI 9071 TO WORK:

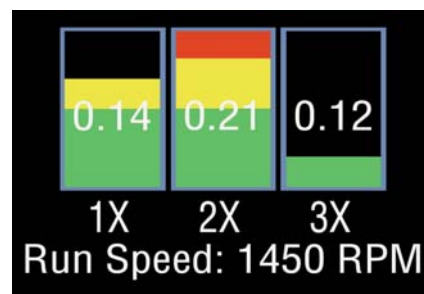
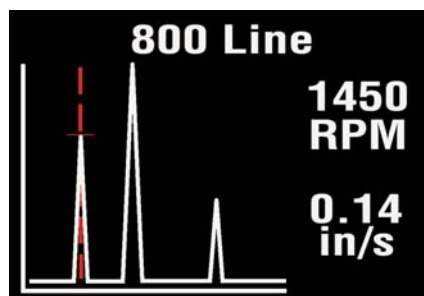
Commercial & Industrial HVAC
Food Processing
Manufacturing
Mining
Packaging
Petrochemical
Pulp and Paper
Power Plants
Utilities
Automotive

ANALYZE • INTERPRET • SAVE

Vibration analysis at the touch of a button!

TPI 9071 analyzes & interprets readings: ISO machine alarms and BDU reading indicate overall machine and bearing condition; clear picture of 1 X (unbalance) 2X (misalignment) 3X (looseness) machine problems 800-line spectrum with zoom and cursor to identify complex issues.

Collect and store test data. Storage space machine faults. Stored readings can be displayed for analysis.





9071 Smart Vibration Meter BNC Cable Accelerometer with Magnet

The TPI 9071 is a simple, easy to use, low cost vibration meter. Record, analyze and display vibration signals at the push of a button.

Overall machine and bearing conditions:

vibration values are displayed with color coded alarm levels for ISO values and Bearing Damage (BDU)



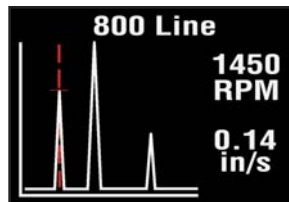
Easy vibration analysis:

clear picture of machine problems detected with built in band filters:

- 1X (unbalance)
- 2X (misalignment)
- 3X (looseness)

Identify complex issues:

800-line spectrum with zoom and cursor.



- **Size:** H 7.95" W 2.36" 200 mm x 60mm x 26mm
- **Weight:** 9.8oz (280g)(not including magnet)
- **Environmental:**
 - * **Water:** IP67 Waterproof
 - * **Operating:** 32°F to 122°F (0°C to 50°C)
 - * **Storage:** -4°F to 158°F (-20°C to 70°C)
- **Power supply:** 2xAA batteries
- **Battery life:** Approximately 50 hours of normal use
- **Frequency ranges:**
 - 2/10Hz - 1kHz ISO
 - 2Hz - 10kHz Total g
 - 1kHz - 10kHz Bearing Analysis
- **Frequency resolution:** 100 / 800 lines
- **Displayed amplitude units:** Acceleration in g / velocity in inches per second or mm per second / Bearing damage in BDU
- **Displayed frequency units:** Hz, CPM or RPM
- **Input range:** +/- 50 g (with supplied accelerometer)
- **Dynamic range:** 72 dB (0.05g resolution)
- **Auto set up of VA bands**
- **Measurement storage:** 200 readings
- **Accelerometer connection:** BNC connector cable with removable magnet (1mV/g - 10,000mV/g)
- **Standard accessories:** A9012 IEPE accelerometer with cable, A9073 magnet and A9074 Soft pouch
- **Optional accessories:** A9086 Protective boot with magnets

Advanced
Back
BDU Settings
Units
Device Settings

Readings are easily saved and recalled with all alarm levels and settings stored in non-volatile flash memory. Run speed and machine type are entered with the simple to use Setup Wizard.

It really couldn't be any easier to use! Just 2 buttons - take reading and menu Left and right scroll arrows.

Test Products International, Inc.
Headquarters:
9615 SW Allen Blvd.
Beaverton, OR 97005 USA
Tel: 503-520-9197
Fax: 503-520-1225
e-mail: info@tpi-thevalueleader.com

Test Products International, Ltd.
Canada
Tel: 905-693-8558
Fax: 905-693-0888
e-mail: info@tpicanada.com

Test Products
International Europe Ltd.
Tel: +44 (0) 1293 530196
Fax: +44 (0)1293 531870
e-mail: sales@tpieurope.com

TPI Asia Pacific
Tel: +82-32-831-3567
Fax: +82-32-833-3569
e-mail: sales@tpiasiapacific.com