



1. PRODUCT USE & SAFETY TIPS

1. Do not allow unauthorized or unprofessional personal to disassemble, only by the professionals.
2. The main device is not waterproof, must be stored in a dry place.
3. Check the nozzle or filter if it is clogged with dirt, when the cleaning machine does not spray.
4. Check to see the battery if the battery is out of battery or malfunction, when the cleaning machine is not able to start or continue to running unstop.
5. After use, make sure to run the cleaning machine with clean water for 2 minutes before power off to avoid chemical residue, this can extend the life of the machine.



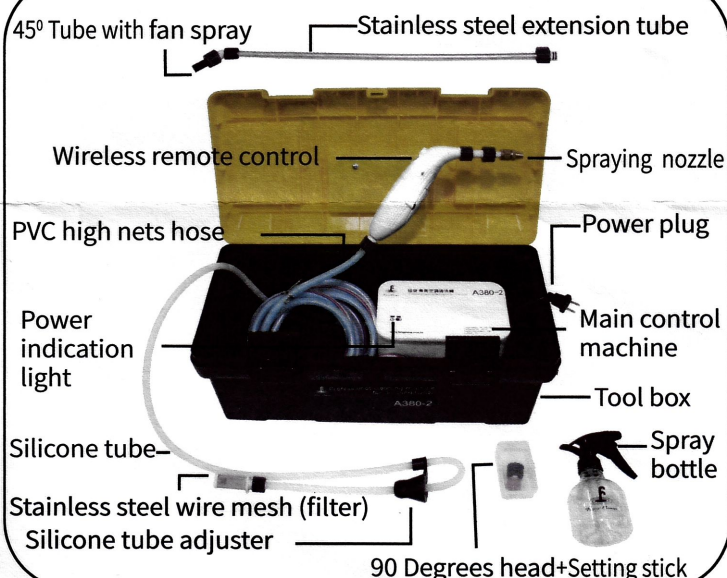
2. PRECAUTIONS

1. Warranty card includes your rights and responsibilities in the assembly, installation or maintenance of the cleaning machine. You must read this warranty card carefully and follow all the instructions prior to performing any installation or maintenance procedures involving the device. Purchaser is assume to agree with the warranty's policy as long as the device is installed and operated by authorized representatives of the company or by others upon specific approval by the company.
2. Failure to read and follow the instructions contains with this warranty card could result in serious damage to the device and the manufacturer is not responsible for any of these actions.
3. Purchaser should make a claim to distributor or dealer.

3. OPERATING PROCEDURES

- ① First unlock buckle → Press start button
First press → Low pressure
Second press → High pressure
Third press → Stop the machine
Start / Stop Low pressure
High pressure
Low, High, Stop/Start
One single click
- ② New machine or long time no use machine will sometime occur the silicone drain pipe can not absorb water, to resolve this issue require the machine is running and remove the stainless filter then use spray bottle to pump water in until you see water coming out from spray head and hearing the motor sound running again.
- ③ Excellent use with "Full type of cleaning cover" to provide fast and efficient way to cleaning your air conditioner.
(Cleaning covers require additional purchase)
- ④ After use, make sure to run the cleaning machine with clean water for 2 minutes before power off to avoid chemical residue, this can extend the life of the machine.

4. DETAIL DESCRIPTION



5. PRODUCT SPECIFICATION

Product Name: Cleaning machine

Model: A380-2

Voltage: AC100-240V

Frequency: 50/60Hz

Power Consumption: 75W

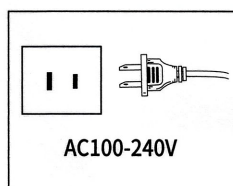
Pressure: 12kg/cm²

Weight: 3.6kg

Maximum flow: Low pressure 800 (ml)
High pressure 2400 (ml)

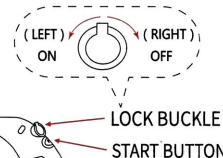
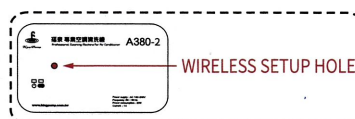
Accessories:

1. Stainless steel extension tube X 1 (for outdoor unit)
2. 5 meter PVC high nets hose (included wireless controller)
3. Silicone tube (stainless filter, tube adjuster)
4. Setting pin
5. Spray bottle X 1

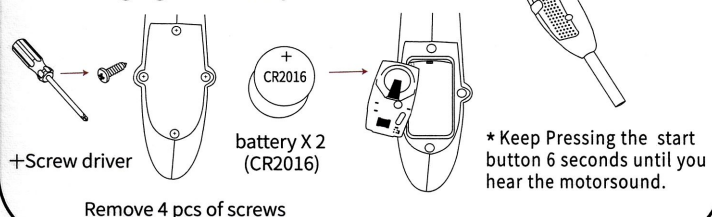


6. TROUBLESHOOTING

1. Setting the wireless remote control system:
Make sure power is on → take out the hole cap → insert the setting stick and keep press for 8 seconds and let go → press the setting stick for one time → press the start button → finish wireless setting → put the hole cap back at wireless setup hole (please redo the procedure if require)



2. Changing the battery :



※If you have any questions, please refer to the videos on official website thank you for your cooperation!