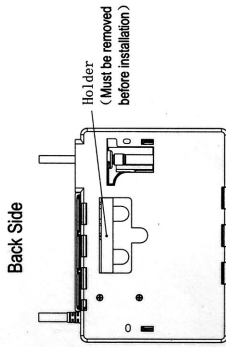
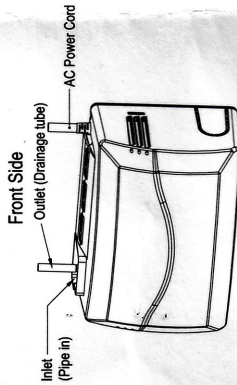


AIR CONDITIONER DRAINAGE PUMP Dewpoint®

USER MANUAL

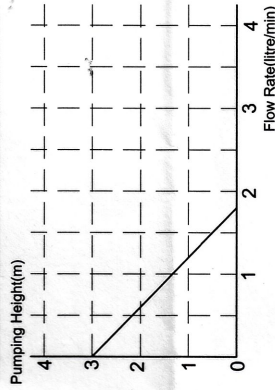
1. Model Name: DDP1030CM



2. Specification

Series		PERFORMANCE	
Model	DDP1030CM	Model	DDP1030CM
Control Type	Mechanical	Power Source	240V/50
Power	16	Power	W
Dimension(L×W×H)	200×114×142	Weight	kg
Weight	1.6	Maximum Flow Rate	litre/min
Maximum Allowable Pump Lift	1.8	Applicable Cooling Capacity	Up to (top)
Sound Pressure Level	43	Tank Volume	580
Draining Tube	4.0	Inner diameter, mm	4.0
	6.0	Outer diameter, mm	6.0

Pump Lift vs Flow Rate



3. Notice & Maintenance

- ☑ Using 4x6 mm tube as the drainage tube to prevent from blocking.
(Applying only to the drainage tube under 8000kcal/hr)
- ☑ Please don't install the drainage pump near any heat sources.
- ☑ In case of malfunction, please don't put the valuable goods or any electrical appliances under the drainage pump.
- ☑ Only for HVAC System and NOT for outdoor usage.
- ☑ Authorised dealer should demonstrate the operation instruction from the manual to customers.
- ☑ Read the manual before installation.
- ☑ Only the authorised dealer with legal licence can install or maintain the drainage pump. Customers can't do these jobs by themselves.

4. Characteristics

- Using the special vibration suction system to lower the operation sound level.
- With several international.
- Precision water level control.
- Using Duckbill Check Valve.
- Various Inlet Options For Easy Installation.

5. Trouble Shooting

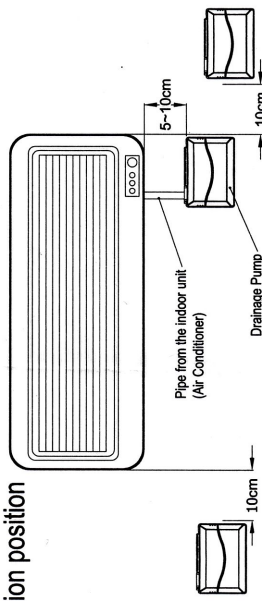
In case of malfunction of overflow:

- △ Make sure the AC power is normal.
- △ Checking the drainage tube if blocked.
- △ Checking the Air conditioner's pipe if inserted properly.

2019.06 Version

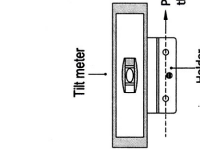
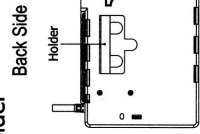
6. Installation Steps

1 Drainage pump installation position

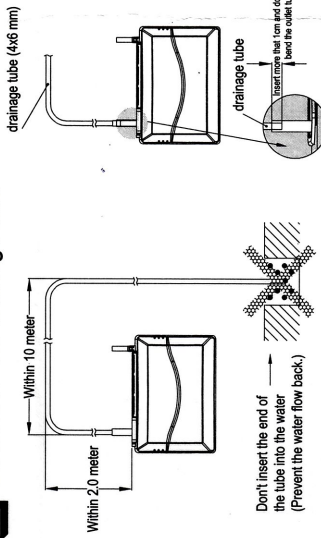


2 Setting the holder

- Installation
Use screw to fasten the holder on the desired position. (The holder must parallel to the ground)



3 Installation the drainage tube



4 Wiring connection

- △ Warning
The wiring connection is the most important step. The drainage pump should have a constant incoming power supply for 24 hours a day. Please follow the instructions below to prevent any overflow conditions.
Instructions:
 - Always connect the wire to an incoming power such as power socket.
 - If power socket is unavailable and it is required to connect the wire directly to the air conditioner indoor unit, please follow the steps below
- (1) For air conditioner indoor unit with built-in starter. Connect the wire to where power is incoming directly from the main and is supplying power to the built-in starter.
- (2) Make sure the connected power always on supplying.
- (3) When finished, do the second check.

Precaution:
In the event of power failure, please remove the air conditioner drainage pipe away from the water pump. Redirect the drainage pipe to an external bucket to collect remaining condensate water.