

CM Refrigeration – Condenser & Heat-Exchanger Tube Cleaner



Model : CM-V Tube Cleaner



A) Product Introduction:

CM is one of the earliest factories in developing and manufacturing rotary tube cleaners. The CM-V is the third generation of the original rotary tube cleaner. All our rotary tube cleaning machines make tough tube cleaning a simple, one-person operation. They are ideal for cleaning tubes/pipes 6.35mm-25.4mm (1/4"-1") I.D. in chillers, condensers, evaporators, absorption machines and heat exchangers etc.

The CM-V uses a cleaning tool mounted to the tip of a flexible shaft, which is available in different lengths and diameters to fit the size of the tube to be cleaned. As the shaft rotates inside its watertight nylon casing, the unit feeds water through the casing to the cleaning tool. A foot switch controls shaft rotation and water flow. While the operator feeds the rotating shaft assembly through the tube, the water flow flushes out deposits as they are loosened.

B) Characteristics:

Simple to operate-minimal training required.
Stainless steel construction - long life.
Quickly connect and disconnect the flexible shaft-no tools required.
Interchangeable cleaning tool - versatile.
Large wheels—easy to move.

C) Specifications:

Power Supply: 110V/60Hz, 220V/50Hz
Motor: 1/2HP
Flexible Shaft Speed: 860rpm/1420rpm
Dimensions: 560mm(L)×350mm(W)×1000mm(H)
Weight: 30KG

D) Accessories:

Flexible shaft

Diameter: 6mm-12mm(1/4"-1") (Standard : 14mm)
Length: 3.7m-22.9m (Standard: 25 ft or 7.5m)
Material: carbon steel /stainless steel

Brush

Diameter: 6.35mm-25.4mm(1/4"-1") (Standard : 1/2" (1), 5/8" (1) & 3/4" (1))
Material: nylon brushes with wear resistance / stainless steel brushes/ brass brushes



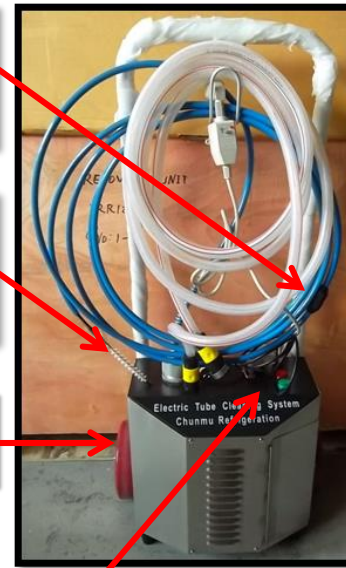
Stopper



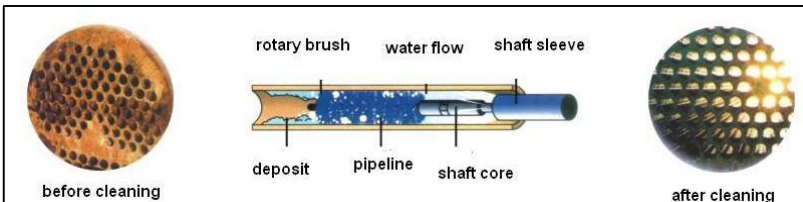
Brush



Wheel



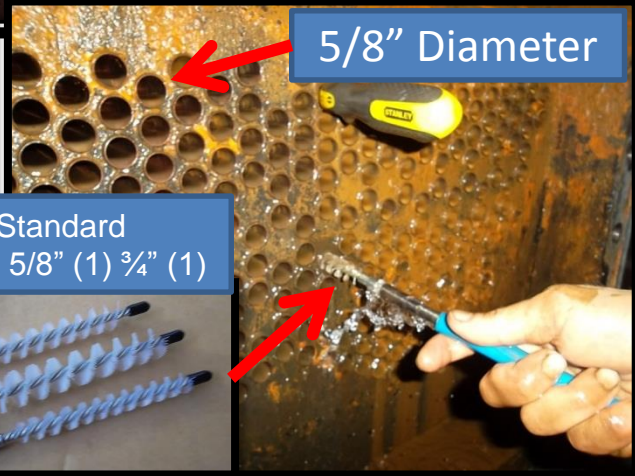
Foot Pedal



Tube Cleaner In Action



Stopper
(Tube Length
Determination)



5/8" Diameter

Standard
1/2" (1) 5/8" (1) 3/4" (1)



Machine On/Off
Pedal

