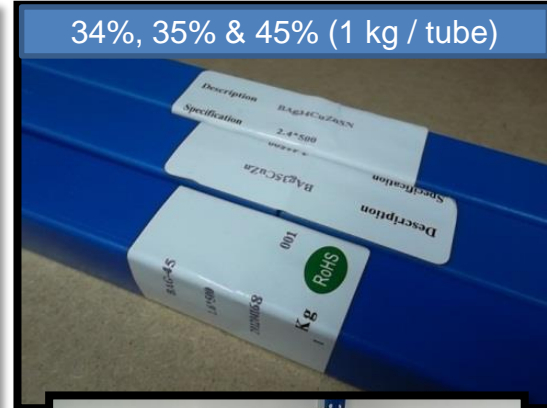


Global Brazing Alloys Application

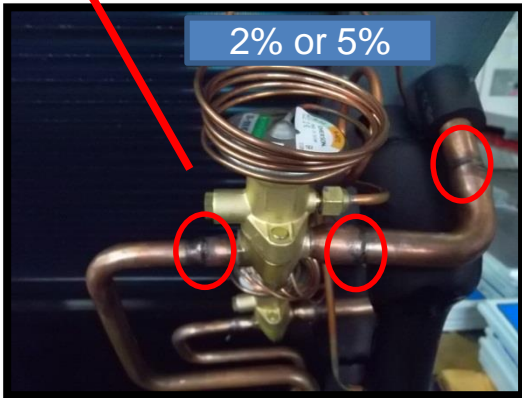
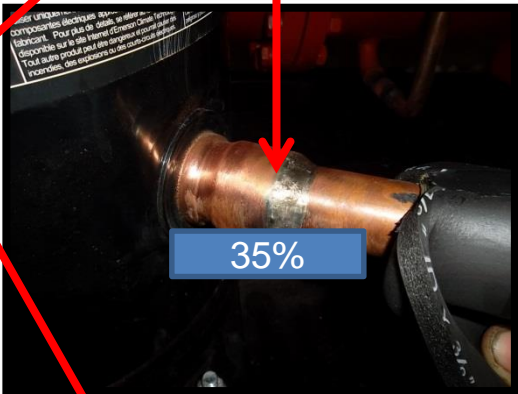
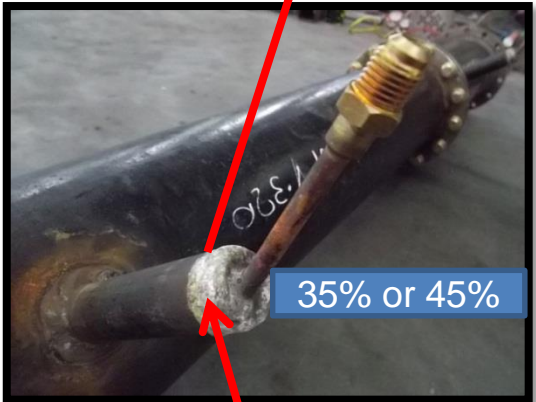
- 1) Global Brazing Alloys : 0%, 2%, 5% , 35% & 45%
- 2) Model : GWY-7P (BCUP-2 [0%]) 1/8" x 0.05 x 20" Flat Rod
GWY-2B (BCUP-6 [2%]) 1/8" x 0.05 x 20" Flat Rod
GWY-5B (BCUP-3 [5%]) 3/32" (2.38mm)) x 20" Round Rod
GJY-35A (BAg35 [35%]) 2.4mm x 500 mm Round Rod
GJY-45 (Bag-5 [45%]) 1.6mm x 500mm Round Rod
- 3) Component To Braze : Copper To Copper (0%/2%/5%) Copper To Brass (35%) Copper To Steel (45%)



0%, 2% & 5% (12 kg / box)

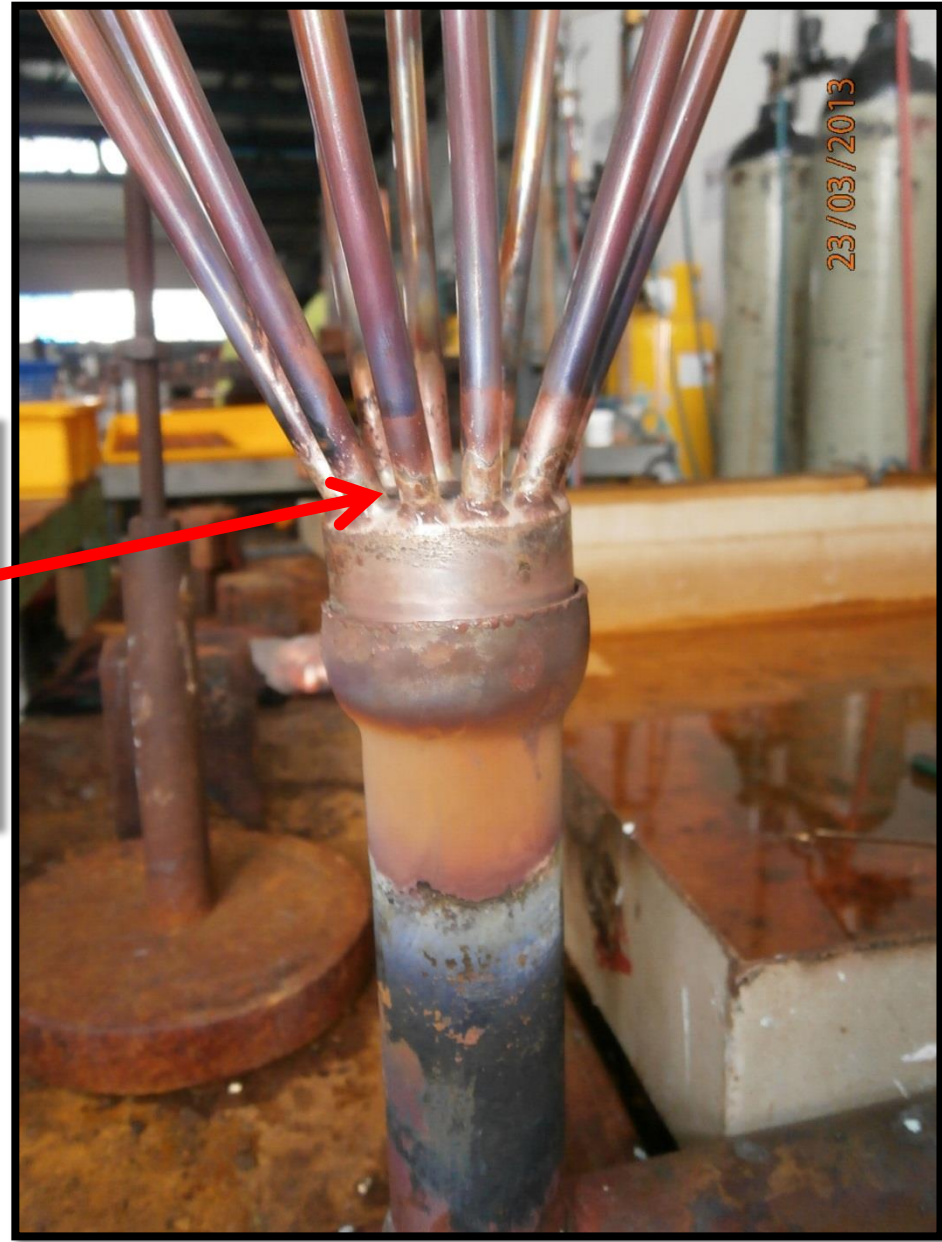


Global Brazing Alloys Application



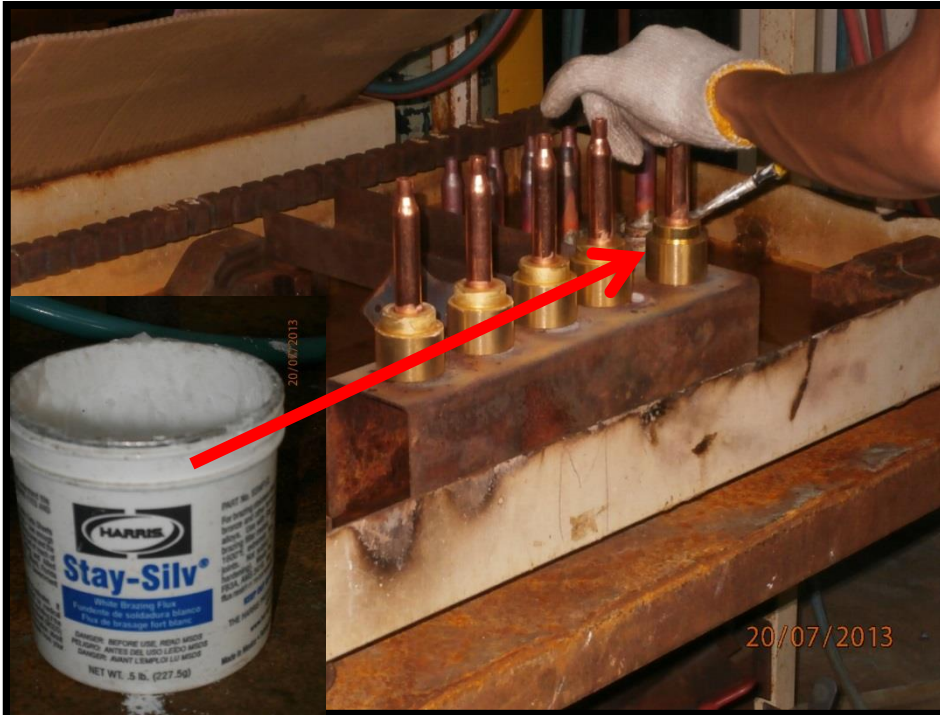
CULMI AIR-COND & REFRIGERATION PARTS SUPPLY SDN BHD

Global Brazing Alloys Application



CULMI AIR-COND & REFRIGERATION PARTS SUPPLY SDN BHD

Global Brazing Alloys Application



Harris Stay-Silv White Paste Application For Surface Brazing Rod Sticking and Better Flow



Global 35%



Copper

Brass

CULMI AIR-COND & REFRIGERATION PARTS SUPPLY SDN BHD

Brazing Alloys Applications

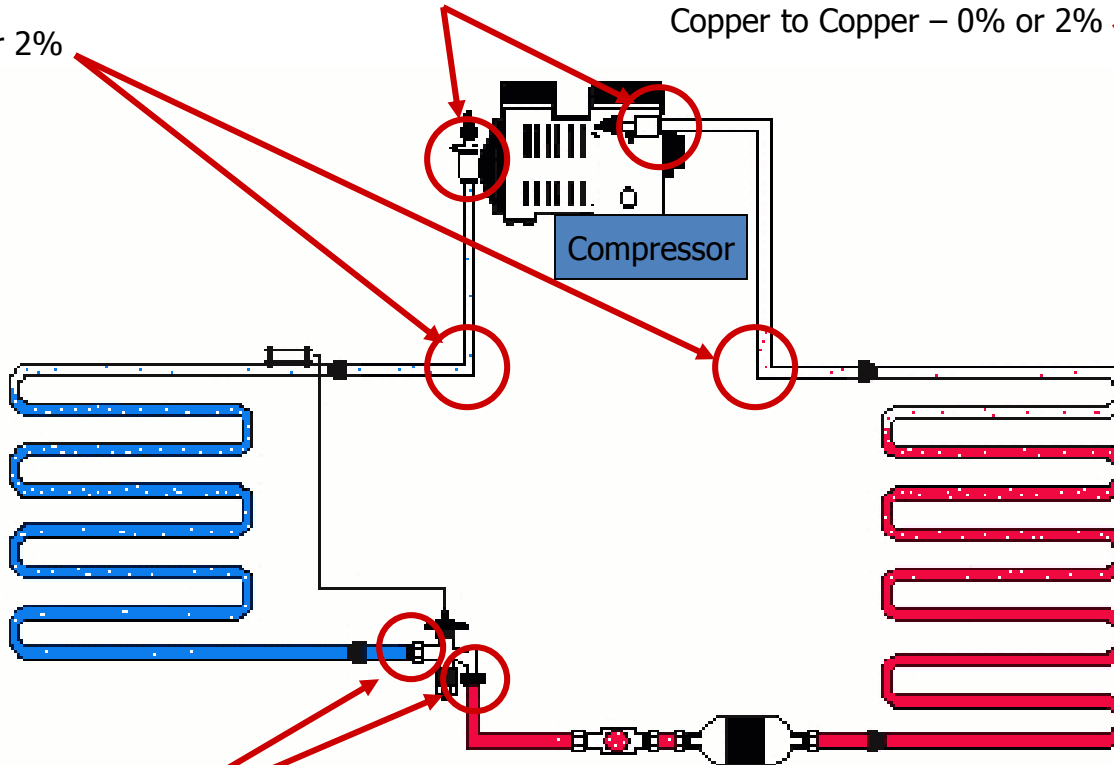
Copper to Brass – 35% with Flux or Blockade

Copper to Copper – 0% or 2%



Evaporator

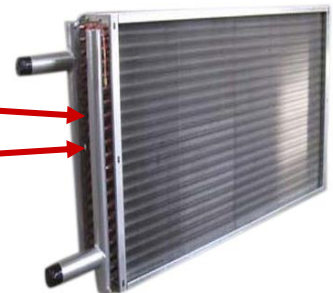
Copper to Copper – 0% or 2%



Copper to Copper – 5%

35% or 45% with Black Flux

Steel Header
Copper Piece
Inserted into
Steel Header



Condenser