

15348/15368 REPLACEMENT VALVE ASSEMBLY

WARNING



Wear safety goggles when working with refrigerants. Contact with refrigerant can cause eye injury.




Disconnect lines and hoses using extreme caution! Pressurized refrigerant may be present in hoses. Point lines and hoses away from you and anyone nearby.

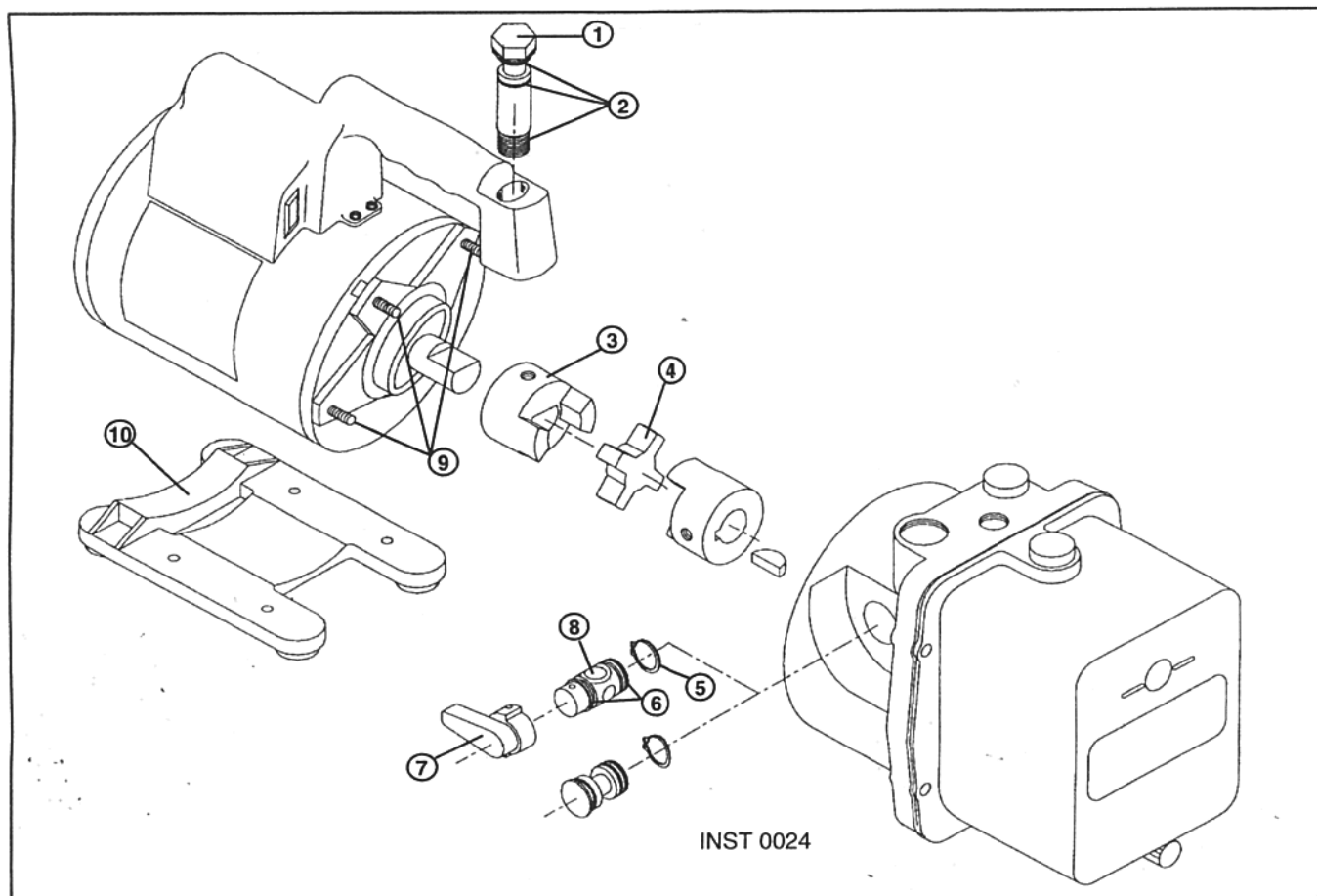


Unplug the unit before beginning service work. Incorrect use or connections can cause electrical shock.

Follow these steps to replace the valve assembly in the Series 15301, 15400 or 15600 VacuMaster™ vacuum pumps. The numbers shown in parentheses in the instructions correspond to the callouts in the drawing.

1. Disconnect the power cord from the AC power line.
2. Loosen, but do **not** remove, the handle bolt (1) from the pump handle.
3. Turn the pump on its side, and remove the base (10).
4. Loosen the four clamp bolts (9), and remove the motor and handle assembly.

Continued 



5. Remove the bottom O-ring from the handle bolt (1) and, using a rotating motion, pull the bolt from the handle.
6. Remove the snap ring (5) from the end of the spool valve.

Note: Using snap ring pliers external with 90 degree tips will ease removal of snap ring.

7. Grasp the valve handle (7), and pull it straight out while rotating the spool valve back and forth.

Note: The 15348 replacement valve assembly for the 15301 vacuum pump does not have a spool valve with a handle; it has a brass plug. However, you should follow the same procedure for its replacement.

8. Lubricate the new spool valve (8) and O-rings (6) with the silicone grease provided. Apply a moderate amount of vacuum grease to the radial surface of the assembly, sufficient to fill any gap in the O-ring groove.

9. Replace the handle bolt seals (2) with the new seals provided.

10. Install the new spool valve assembly with the handle pointing to "Open." This reduces the chance of damage to the O-rings. Replace the snap ring.

11. Assemble the motor to the pump, and tighten the clamp bolts.

Note: Be sure the rubber "spider" (4) is positioned between the two couplings (3), then adjust the couplings so that they are approximately $\frac{1}{16}$ " to $\frac{1}{8}$ " apart from each other.

12. Re-install the base (10).

13. Install and tighten the handle bolt (1) to 120 in. lbs., using a torque wrench.



For more information call toll-free
1-800-822-5561. In all other locations,
contact your local distributor.

Because of ongoing product improvements, we reserve the right to change design, specifications, or materials without notice.

SPX **ROBINAIR**

SPX Corporation
655 Eisenhower Drive
Owatonna MN 55060
Customer Service: 1-800-533-6127
Fax : 1-800-322-2890
Technical Service : 1-800-822-5561
Fax : 1-800-822-7805
Website : www.robinair.com