



R407C

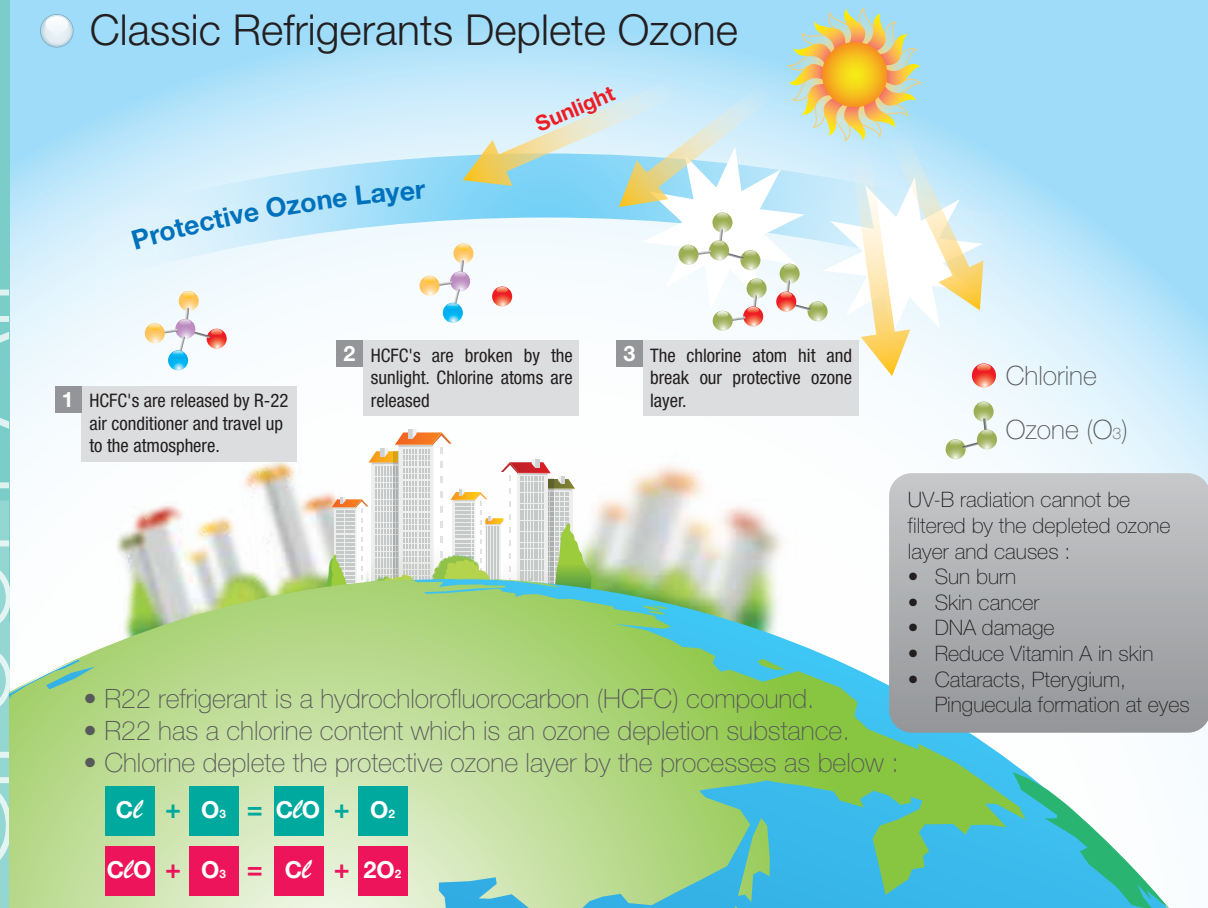
Non Inverter
Series



R407C

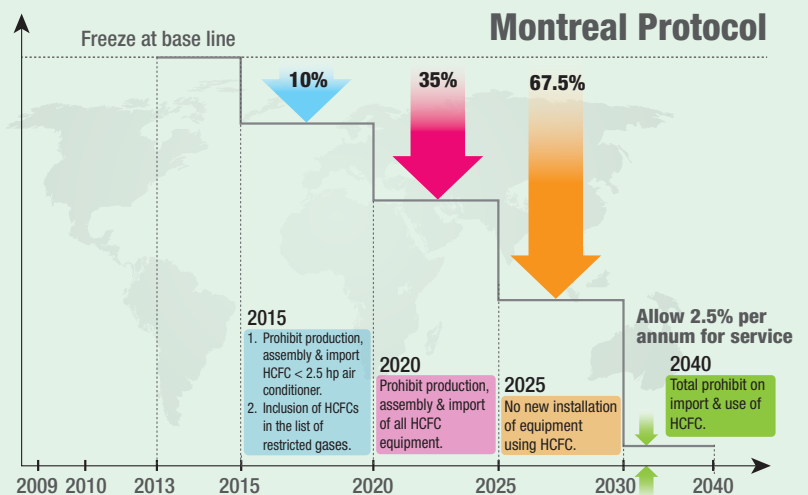
4ODP-1014-A

Classic Refrigerants Deplete Ozone



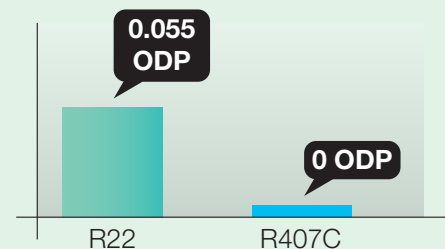
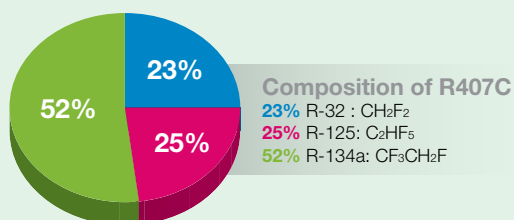
Regulations

- * According to Montreal Protocol, R22 will be gradually phased-out.
- * In Malaysia, Department of Environment (DOE) has implemented HCFC Phase Out Management Plan (HPMP).
- * For R22 air-conditioners, 25,000 Btu/hr and below will be phased out by year 2015.






Alternatives Refrigerant To Save Ozone

> Ozone friendly refrigerant: R407C



- > R407C does not contain any chlorine content which is an ozone depletion substance.
- > R407C provide zero ozone depletion potential (ODP =0)
- > The lower the ODP value, the better enviromental performance.
 - Less harmful influence on the environment than R22.

R407C Product Line Up

Model Name	Indoor Model	Outdoor Model	Capacity Range
High Static Ducted	<ul style="list-style-type: none"> • FBHP75DV1X • FBHP100DV1X • FBHP125DY1X • FBHP150D1/D2Y1X • FBV200B2Y1C • FBV250B2Y1C • FBV300B2/B3Y1C • FBV350B3Y1C • FBV400B4Y1C • FBV500B4Y1C • FBV600B4Y1X • FBV750B5Y1X 	 <p>RVP75/100/125/150DY1X</p>	73,000 Btu/hr - 725,000 Btu/hr
Rooftop	 <ul style="list-style-type: none"> • UATP60/80/100/120/150/200AY1X 	 <ul style="list-style-type: none"> • UATP250/300/360/420AY1X 	59,000 Btu/hr - 415,000 Btu/hr

High Static Ducted Series

● Wide Range Of Product

- > Daikin ducted split is offering very wide range of product lineup which is applicable from residential, to light commercial or even commercial use.

● Convertible Air Discharge

- > With the choices of vertical and horizontal air throw at the indoor unit make it versatile to various architectural design.

● Changeable Drive Package

- > Non-standard external static pressure & air flow requirement can be sized by changing the factory fitted drive package. (for belt drive model only)

● Safety Features

- > High pressure and low pressure protection
- > Phase sequencer is used to detect for any wrong phase and phase loss during installation and operation
- > Built- in internal overload protection for compressor

Rooftop Series

● One Complete Set Concept

- > The UATP is a complete packaged unit by itself.
- > No additional refrigeration work is required at site.
- > This will ensure expedited installation time and minimized installation labor.



● A Flat Top Design

- > UATP flat top design allow for maximum utilization of warehouse and container space.
- > The unit can be stacked up such that the space utilization is minimum.



● Compact Design

- > The foot print of the unit is very small, hence minimize the installation area required.

● High Static Ducted



FBHP75/100DV1X



FBHP125D/150D1Y1X



FBHP150D2Y1X



FBV200B2Y1C



FBV250/300B2Y1C



FBV300/350B3Y1C



FBV400/500B4Y1C



FBV600B4Y1X



FBV750B5Y1X

R407C

MODEL	INDOOR UNIT		FBHP75DV1X	FBHP100DV1X	FBHP125DY1X	FBHP150D1Y1X	FBHP150D2Y1X
	OUTDOOR UNIT		RVP75DY1X	RVP100DY1X	RVP125DY1X	RVP150DY1X	RVP75DY1X x 2
TOTAL COOLING CAPACITY		Btu/hr	73,000	91,000	108,000	145,000	146,000
		W	21,395	26,671	31,653	42,497	42,790
INPUT POWER		W	7,636	11,526	12,100	16,239	15,536
RUNNING CURRENT, 1ø [3ø]		A	[14.6]	[19.5]	[21.7]	[28.4]	[30.2]
EER		Btu/W / W/W	9.56 / 2.80	7.90 / 2.31	8.93 / 2.62	8.93 / 2.62	9.40 / 2.75
POWER SOURCE		V/Ph / Hz	380 - 415 / 3 / 50				
REFRIGERANT TYPE/ CONTROL			R407C / INDOOR TXV				
EXTERNAL STATIC PRESSURE		in.wg	0.40	0.40	0.60	0.60	0.60
AIR FLOW		CFM	2,250	3,000	3,750	4,500	4,500
SOUND PRESSURE LEVEL		dBA	56	57	58	59	59
UNIT DIMENSION (H x W x D)	INDOOR UNIT	mm	507 x 1,407 x 670	507 x 1,817 x 670	710 x 1,694 x 775	710 x 1,793 x 775	
	OUTDOOR UNIT		1,041 x 981 x 981		1,041 x 1,083 x 1,083	1,142 x 1,083 x 1,083	(1,041 x 981 x 981) x 2
UNIT WEIGHT	INDOOR UNIT	kg	95	120	155	175	
	OUTDOOR UNIT		170	184	197	268	170 x 2
COPPER PIPE SIZE	LIQUID	mm/in	12.7 / 1/2	15.88 / 5/8	15.88 / 5/8	15.88 / 5/8	12.7 / 1/2
	GAS	mm/in	25.4 / 1	28.58 / 1-1/8	34.93 / 1-3/8	34.93 / 1-3/8	25.4 / 1

MODEL	INDOOR UNIT		FBV200B2Y1C	FBV250B2Y1C	FBV300B3Y1C	FBV300B2Y1C	FBV350B3Y1C	
	OUTDOOR UNIT		RVP100DY1X x 2	RVP125DY1X x 2	RVP100DY1X x 3	RVP150DY1X x 2	RVP100DY1X	RVP125DY1X x2
TOTAL COOLING CAPACITY		Btu/hr	182,000	216,000	273,000	290,000	307,000	
		W	53,341	63,306	80,012	84,994	89,977	
INPUT POWER		W	22,502	25,330	34,408	34,048	37,485	
RUNNING CURRENT, 1ø [3ø]		A	39.6	45.1	60.2	59.2	65.8	
EER		Btu/W / W/W	8.09 / 2.37	8.53 / 2.50	7.93 / 2.33	8.52 / 2.50	8.20 / 2.4	
POWER SOURCE		V/Ph / Hz	380 - 415 / 3 / 50					
REFRIGERANT TYPE/ CONTROL			R407C / INDOOR TXV					
EXTERNAL STATIC PRESSURE		in.wg	1.06	1.12	1.20		1.14	
AIR FLOW		CFM	6,400	8,000	9,000		10,500	
SOUND PRESSURE LEVEL		dBA	61	63	66		66	
UNIT DIMENSION (Hx W x D)		mm	885 x 1,794 x 850	1,231 x 1,766 x 1,069			1,486 x 2,022 x 1,069	
			(1,041 x 981 x 981) x 2	(1,041 x 1,083 x 1,083) x 2	(1,041 x 981 x 981) x 3	(1,142 x 1,083 x 1,083) x 2	1,041 x 981 x 981	(1,041 x 1,083 x 1,083) x 2
UNIT WEIGHT		kg	220	343			440	
			184 x2	197 x 2	184 x3	268 x 2	184	197 x2
COPPER PIPE SIZE		LIQUID	mm/in	15.88 / 5/8	15.88 / 5/8	15.88 / 5/8	15.88 / 5/8	15.88 / 5/8
		GAS	mm/in	28.58 / 1-1/8	34.93 / 1- 3/8	28.58 / 1-1/8	34.93 / 1- 3/8	28.58 / 1-1/8

MODEL	INDOOR UNIT		FBV400B4Y1C	FBV500B4Y1C	FBV600B4Y1X	FBV750B5Y1X
	OUTDOOR UNIT		RVP100DY1X x 4	RVP125DY1X x 4	RVP150DY1X x 4	RVP150DY1X x 5
TOTAL COOLING CAPACITY		Btu/hr	364,000	432,000	580,000	725,000
		W	106,682	126,612	169,988	212,485
INPUT POWER		W	44,541	51,078	67,293	85,626
RUNNING CURRENT, 1ø [3ø]		A	77.9	90.9	117.5	148.9
EER		Btu/W / W/W	8.17 / 2.40	8.44 / 2.48	8.62 / 2.53	8.47 / 2.48
POWER SOURCE		V/Ph / Hz	380-415 / 3 / 50			
REFRIGERANT TYPE/ CONTROL			R407C / INDOOR TXV			
EXTERNAL STATIC PRESSURE		in.wg	1.24	1.53	1.63	1.82
AIR FLOW		CFM	12,000	15,000	18,000	22,500
SOUND PRESSURE LEVEL		dBA	66	68	70	71
UNIT DIMENSION (H x W x D)	INDOOR UNIT	mm	1,486 x 2,174 x 1,336		1,918 x 2,174 x 1,775	2,197 x 2,174 x 1,775
	OUTDOOR UNIT		(1,041 x 981 x 981) x4	(1,041 x 1,083 x 1,083) x 4	(1,142 x 1,083 x 1,083) x4	(1,142 x 1,083 x 1,083) x 5
UNIT WEIGHT	INDOOR UNIT	kg	513	606	991	1,051
	OUTDOOR UNIT		184 x 4	197 x 4	268 x 4	268 x 5
COPPER PIPE SIZE	LIQUID	mm/in	15.88 / 5/8	15.88 / 5/8	15.88 / 5/8	15.88 / 5/8
	GAS	mm/in	28.58 / 1-1/8	34.93 / 1- 3/8	34.93 / 1- 3/8	34.93 / 1- 3/8

1) DUE TO OUR POLICY OF INNOVATION, ALL SPECIFICATIONS ARE SUBJECTED TO CHANGE BY THE MANUFACTURE WITHOUT PRIOR NOTICE.
2) ALL UNITS ARE BEING TESTED AND COMPLY TO ISO 13253.
3) NOMINAL COOLING CAPACITY ARE BASED ON THE CONDITIONS BELOW:
COOLING - 27°C DB / 19°C WB INDOOR AND 35°C DB / 24°C WB OUTDOOR.
4) SOUND PRESSURE LEVELS ARE MEASURED IN SOUND ROOM.
5) THE CURRENT MEASURED AT SITE MAY VARY FROM THE SPECIFICATION STATED.
6) FOR DIFFERENT INDOOR/OUTDOOR AIR THROW, KINDLY REFER TO OUR NETWORK DEVELOPMENT EXECUTIVE/REPRESENTATIVES.

Roof Top



UATP60/80/100/120/150/200AY1X



UATP250/300/360/420AY1X

R407C

MODEL		UATP60AY1X	UATP80AY1X	UATP100AY1X	UATP120AY1X	UATP150AY1X
TOTAL COOLING CAPACITY	Btu/h	59,000	72,000	95,000	110,000	140,000
	W	17,292	21,102	27,843	32,239	41,032
TOTAL POWER	W	5,890	8,700	11,600	12,180	17,200
TOTAL CURRENT, 3Φ	A	10.9	16.3	20.2	22.8	32.1
EER	Btu/h/W / W/W	10.02 / 2.94	8.28 / 2.43	8.19 / 2.40	9.03 / 2.65	8.14 / 2.39
POWER SOURCE	V/Ph/Hz	380-415 / 3 / 50				
REFRIGERANT	TYPE	R-407C				
AIR FLOW	CFM	1,800	2,826	3,532	3,600	5,651
SOUND PRESSURE LEVEL	dBA	63	65	66	68	70
DIMENSION (HxWxD)	mm	1,000 x 1,100 x 1,530	1,000 x 1,300 x 1,530			1,200 x 1,990 x 1,670
UNIT WEIGHT	kg	295	370	400	425	665
EVAPORATOR EXTERNAL STATIC PRESSURE	in.wg	0.40				0.80

MODEL		UATP200AY1X	UATP250AY1X	UATP300AY1X	UATP360AY1X	UATP420AY1X
TOTAL COOLING CAPACITY	Btu/h	190,000	230,000	283,000	331,000	415,000
	W	55,686	67,409	82,943	97,011	121,630
TOTAL POWER	W	25,100	28,700	40,160	41,870	48,800
TOTAL CURRENT, 3Φ	A	43.8	53.0	68.5	74.2	83.7
EER	Btu/h/W / W/W	7.57 / 2.22	8.01 / 2.35	7.05 / 2.07	7.91 / 2.32	8.50 / 2.49
POWER SOURCE	V/Ph/Hz	380-415 / 3 / 50				
REFRIGERANT	TYPE	R-407C				
AIR FLOW	CFM	6,710	8,000	9,300	11,000	12,500
SOUND PRESSURE LEVEL	dBA	70	74		70	
DIMENSION (HxWxD)	mm	1,200 x 1,990 x 1,670	1,735 x 2,250 x 2,800		1,974 x 2,252 x 3,180	
UNIT WEIGHT	kg	765	1,200	1,350	1,510	1,600
EVAPORATOR EXTERNAL STATIC PRESSURE	in.wg	0.80	1.0			

1) DUE TO OUR POLICY OF INNOVATION, ALL SPECIFICATIONS ARE SUBJECTED TO CHANGE BY THE MANUFACTURE WITHOUT PRIOR NOTICE.

2) ALL UNITS ARE BEING TESTED AND COMPLY TO ISO 13253.

3) NOMINAL COOLING CAPACITY ARE BASED ON THE CONDITIONS BELOW:

COOLING - 27°C DB / 19°C WB INDOOR AND 35°C DB / 24°C WB OUTDOOR.

4) SOUND PRESSURE LEVELS ARE MEASURED IN SOUND ROOM.

5) THE CURRENT MEASURED AT SITE MAY VARY FROM THE SPECIFICATION STATED.

GA GROUP ASSOCIATED (C&L) SDN BHD (109719-M)

Head Office: Tel: 03-7718 8388

Email: sales_enquiry@daikinmalaysia.com.my, customer_service@daikinmalaysia.com.my

Branches:

- Penang Tel: 04-331 1670
- Pahang Tel: 09-567 6778
- Melaka Tel: 06-288 1133
- Sarawak Tel: 082-333 299
- Kedah Tel: 04-733 0235
- Johor Tel: 07-557 7788
- Perak Tel: 05-548 2307
- Sabah Tel: 088-722 194
- Negeri Sembilan Tel: 06-768 8969
- Kelantan Tel: 09-747 4678

Authorized dealer: