



# R410A Non Inverter Ceiling Cassette Series



**R410A**

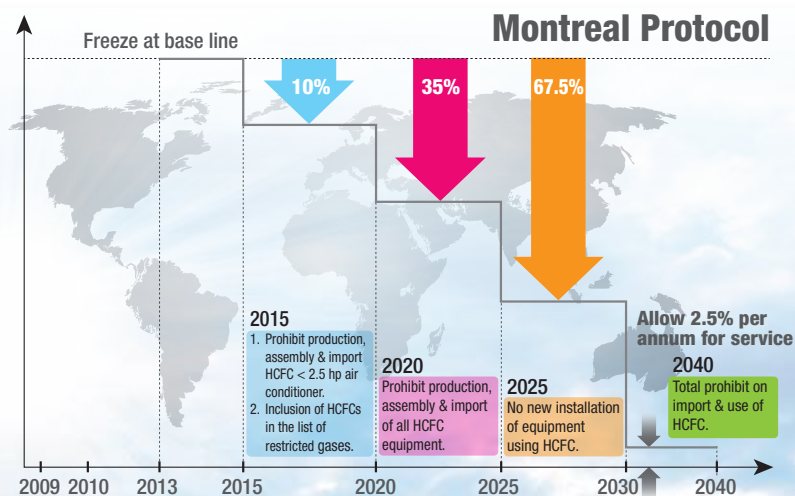
FFCN-0914-A

## Ceiling Cassette Series

TYPE OF REFRIGERANT	Indoor Model	Outdoor Model	Capacity Range
	 FFN10/15CV1   FCN20/25/30/40/50A2V1	 RN10/15FV1  RN20/25CV1  RN28CV1  RN35DV1  RN40-50DY1	1.0 - 5.0 hp

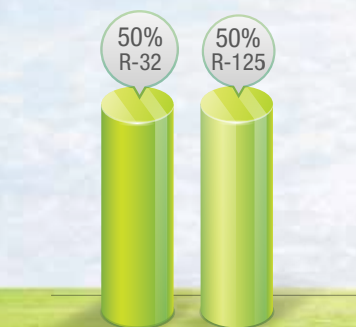
### Regulations

- According to Montreal Protocol, R22 will be gradually phased-out.
- In Malaysia, Department of Environment (DOE) has implemented HCFC Phase Out Management Plan (HPMP).
- For R22 air-conditioners, 25,000 btu/hr and below, will be phased out by year 2015.

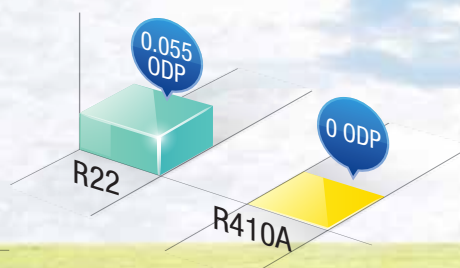


### R410A: The Ozone-Friendly Refrigerant

- R410A as an alternative to R22 refrigerant because it is an ozone-friendly refrigerant.
- R410A refrigerant has no chlorine content which do not contribute to the depletion of the ozone layer.
- R410A is of zero ozone depletion potential (ODP=0).
- The lower the ODP value, the better environmental performance.



The Composition of R410A  
\* R-32: CH<sub>2</sub>F<sub>2</sub>; R-125: C<sub>2</sub>HF<sub>5</sub>



The Comparison of Ozone Depletion Potential (ODP)



# Features



## Negative Ionizer

- The Ion Generator in Daikin R410A Non Inverter Ceiling Cassette series which releases negative ion shower to create refreshing environment resembling nature itself.
- It relieves the symptoms of sleeplessness, tension, migraines, fatigue and etc.

## Purified The Air

- It ables to effectively deactivate the bacteria by damaging microbial DNA and surface structures without being harmful to human tissues.
- It purifies the air by removing airborne contaminates from the air we breathe.

## Deodorization

Its deodorizing properties simply eliminates unpleasant odours derived from cigarettes, bacteria, fungi or mold.

# Product

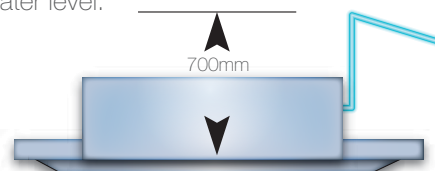
## Exclusive 4-Way Air Flow And Auto Air Swing

This feature is complemented by the powerful Turbo Mixed Flow Fan, cools remarkably fast and evenly to deliver extraordinary cooling efficiency.



## Built-In High Head Drain Pump

The unit comes with a built-in high head drain pump up to 700mm. A safety float is incorporated in the drain pump to monitor its water level.



## Compact and Easy-To-Use Controller

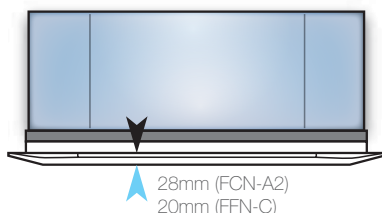
- Prominent temperature display.
- Real-time clock display.
- Easily accessible buttons



DGS01 Wireless Controller

## Elegantly Designed Panel

The slim panel can be blended into any decoration and design.



## Slim Wired Controller (Optional)

The unit also offers an optional wired controller upon your special requirement.

- Dedicated buttons for Quiet and Turbo functions
- Key lock function
- Real-time timer (7 days option, 2 events daily)

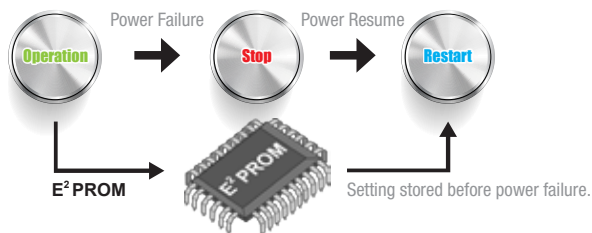


DSLM8 Wired Controller

# Features

## Auto Random Restart

- Once power resumes after a blackout, the unit will restart automatically at its last setting condition.
- This eliminates the need to restart manually after each power failure.



## High Efficiency Hydrophilic Fin

- It encourages condensation of water.
- The condensed water moves easily to the drain pan thus enhancing the cleanliness and lifespan of the cooling coil.

## Built-In-Starter (BIS) \* For 1-2.5hp only

- Protect air conditioner from overcurrent condition due to malfunctioning of internal parts.
- This will prolong the unit's lifespan as the unit will be protected from overcurrent.

# Specifications

R410A



FFN10/15CV1



FCN20/25/30/40/50A2V1

MODEL	INDOOR UNIT	OUTDOOR UNIT	FFN10CV1 RN10FV1	FFN15CV1 RN15FV1
TOTAL COOLING CAPACITY	Btu/hr		9,500	12,500
	W		2,784	3,664
INPUT POWER	W		950	1,250
RUNNING CURRENT, 1Φ [3Φ]	A		4.26	5.60
EER	Btu/hr/W / W/W		10.00 / 2.93	10.00 / 2.93
POWER SOURCE	V/Ph/Hz		220-240 / 1 / 50	
REFRIGERANT TYPE/CONTROL			R-410A / OUTDOOR CAP. TUBE	
AIR FLOW	CFM		410	
SOUND PRESSURE LEVEL	HIGH	dBA	41	41
	LOW		35	34
UNIT DIMENSION (WITH PANEL) (HxWxD)	INDOOR UNIT	mm	250 x 570 x 570 (295 x 640 x 640)	
	OUTDOOR UNIT		550 x 658 x 273	
UNIT WEIGHT	INDOOR UNIT (UNIT + PANEL)	kg	15.5 + 2	
	OUTDOOR UNIT		28	29
COPPER PIPE SIZE	LIQUID	mm/in	6.35 / 1/4	
	GAS	mm/in	9.52 / 3/8	

MODEL	INDOOR UNIT	OUTDOOR UNIT	FCN20A2V1 RN20CV1	FCN25A2V1 RN25CV1	FCN30A2V1 RN28CV1	FCN40A2V1 RN35DV1	FCN40DY1 RN40DY1	FCN50A2V1 RN50DY1
TOTAL COOLING CAPACITY	Btu/hr		18,000	22,000	28,000	30,500	40,000	45,000
	W		5,275	6,448	8,206	8,939	11,723	13,189
INPUT POWER	W		1,840	2,100	2,836	2,820	3,850	4,390
RUNNING CURRENT, 1Φ [3Φ]	A		8.25	9.41	13.30	13.70	[6.86]	[7.80]
EER	Btu/hr/W / W/W		9.78 / 2.87	10.48 / 3.07	9.87 / 2.89	10.82 / 3.17	10.39 / 3.04	10.25 / 3.00
POWER SOURCE	V/Ph/Hz		220-240 / 1 / 50					380-415 / 3 / 50
REFRIGERANT TYPE/CONTROL			R-410A / OUTDOOR CAP. TUBE					
AIR FLOW	CFM		730	830	920	1,030		1,200
SOUND PRESSURE LEVEL	HIGH	dBA	39	42	47	44		47
	SUPER LOW		28	32	37	35		39
UNIT DIMENSION (WITH PANEL) (HxWxD)	INDOOR UNIT	mm	265 x 820 x 820 (345 x 930 x 930)			300 x 820 x 820 (385 x 930 x 930)		
	OUTDOOR UNIT		654 x 855 x 328			756 x 855 x 328		
UNIT WEIGHT	INDOOR UNIT (UNIT + PANEL)	kg	26 + 4			32 + 4		
	OUTDOOR UNIT		43	47	57	86	95	98
COPPER PIPE SIZE	LIQUID	mm/in	6.35 / 1/4			9.52 / 3/8		
	GAS	mm/in	12.7 / 1/2			15.88 / 5/8		

- 1) DUE TO OUR POLICY OF INNOVATION, ALL SPECIFICATIONS ARE SUBJECT TO CHANGE BY THE MANUFACTURER WITHOUT PRIOR NOTICE.
- 2) ALL UNITS ARE BEING TESTED AND COMPLY TO ISO 5151.
- 3) NOMINAL COOLING CAPACITY ARE BASED ON THE CONDITIONS BELOW :  
COOLING - 27°C DB / 19°C WB INDOOR AND 35°C DB / 24°C WB OUTDOOR
- 4) SOUND PRESSURES LEVEL ARE MEASURED IN OYLM R&D SOUND ROOM.



**GROUP ASSOCIATED (C&L) SDN BHD** (109719-M)

Head Office: Tel: 03-7718 8388

Email: sales\_enquiry@daikinmalaysia.com.my, customer\_service@daikinmalaysia.com.my

Branches:

- Penang Tel: 04-331 1670
- Pahang Tel: 09-567 6778
- Melaka Tel: 06-288 1133
- Sarawak Tel: 082-333 299
- Kedah Tel: 04-733 0235

- Johor Tel: 07-557 7788
- Perak Tel: 05-548 2307
- Sabah Tel: 088-722 194
- Negeri Sembilan Tel: 06-768 8969
- Kelantan Tel: 09-747 4678

Authorized dealer: