



Cooling King

Wall Mounted
M Series



R22

FTM-0914-A

Wall Mounted Product Line Up

TYPE OF REFRIGERANT	Indoor Model	Outdoor Model
	 <p>FT 10/15/20/25MV1I FT 10/15/20/25MV1J</p>	 <p>R09/15CV1</p>  <p>R18/20CV1</p>  <p>R25CV1</p>



Modern and Stylish Design

Daikin Cooling King M-Series is designed with a modern and stylish exterior casing to enhance your interior decoration.

Purify the Air

- Able to effectively deactivate the bacteria by damaging microbial DNA and surface structures without being harmful to human tissues.
- Enjoy the healthy ambience around you.



Cleanse the Air

- Extra negative ions produced can remove airborne contaminants from the air we breathe.
- It attracts allergens such as pollen, mold spores, dust and animal dander floating in the air to stick to each other and form clumps.
- These clumps of particle then become heavy enough to drop on the floor, where they can be easily vacuumed up.
- Bring the air fabulously fresh and clean.

○ A Refreshing Ambience

- Creates a refreshing environment resembling the nature like the beach, by the waterfalls, in the mountains and many other places that we feel invigorated and refreshed.
- It relieves the symptoms of sleeplessness, tension, migraines, fatigue and etc.

○ Smooth Air Distribution & Quiet Operation

SCR MOTOR X-Flow Fan

- SCR motor (Silicon-Control Rectifier), voltage controlled speed provides better and smooth air flow swing.
- High efficiency X-flow fan provides smooth air flow and quiet operation.

○ Compact and Easy-To-Use Controller

- Prominent temperature display.
- Real-time clock display.
- Easily accessible buttons



DGS01 Wireless Controller

○ Slim Wired Controller (Optional)

The unit also offers an optional wired controller upon your special requirement.

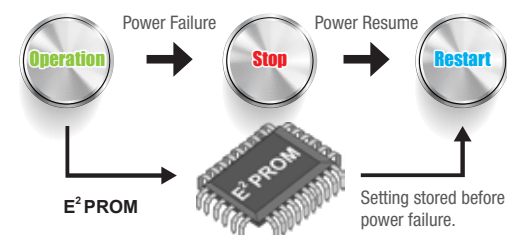
- Dedicated buttons for Quiet and Turbo functions
- Key lock function
- Real-time timer (7 days option, 2 events daily)



DSLMB Wired Controller

○ Auto Random Restart

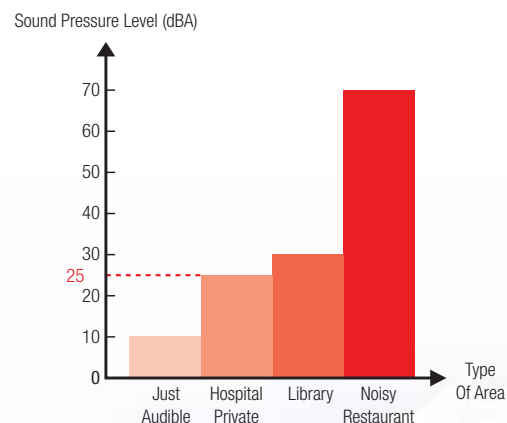
In the event of a sudden power failure during operation, unit can be automatically restarted (subject to certain protection conditions) from last setting condition. This eliminates the need to restart manually after each power failure.



○ Quiet Operation

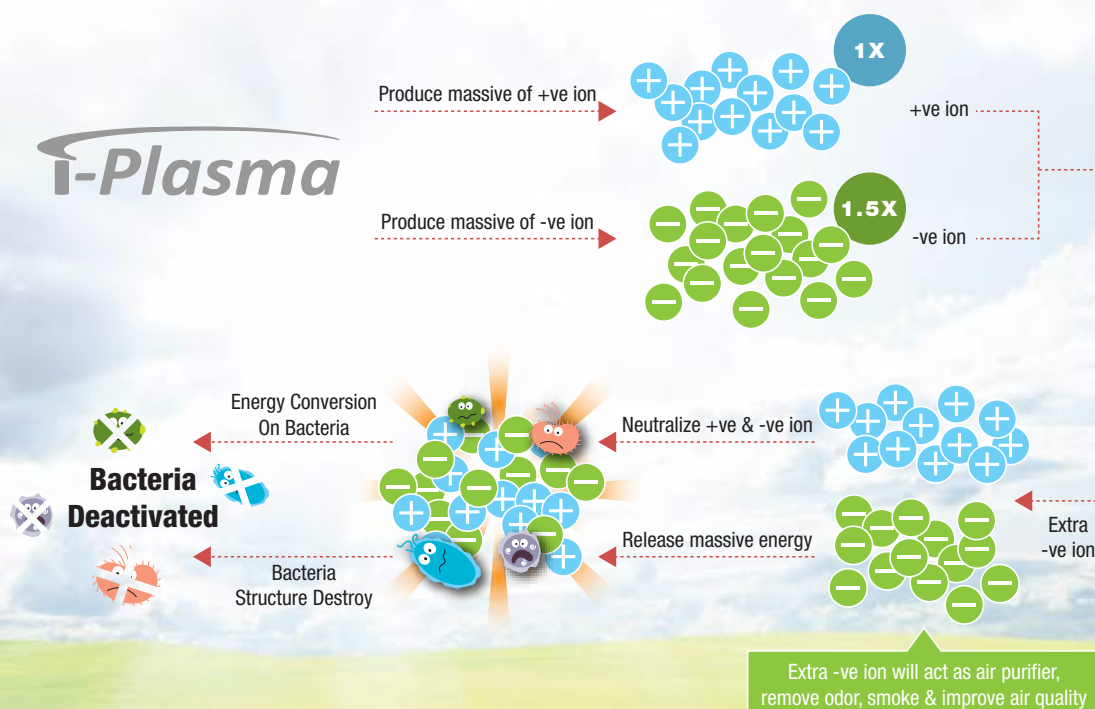
Users are given more choices of up to five selectable fan speeds. By selecting the quiet mode, users can enjoy the refreshing cool air at the sound level as low as 25 dBA.

* Sound pressure levels are measured according to JIS C 9612 standard.



Principle of Plasma Ion

i-Plasma



Features

○ Built-in-Starter (BIS)

Protect air conditioner from overcurrent condition due to malfunctioning of internal parts. This will prolong the unit's lifespan as the unit will be protected from overcurrent.

○ High Efficiency Hydrophilic Fin

It encourages condensation of water. The condensated water moves easily to the drain pan thus enhancing the cleanliness and lifespan of the cooling coil.

○ New Lambda (λ) Heat Exchanger

The new Lambda (λ) structure with a large surface area makes way for higher heat exchanger efficiency.

○ Turbo Mode

This function is available in COOL and DRY modes. Upon activation, the unit will run to full power with the indoor fan running at high speed for 20 minutes. This will provide a fast cooling during operation.

○ Self-Diagnosis System

The advanced Daikin Cooling King is an intelligent unit equipped with a self-diagnosis system that can detect and indicate malfunctions with LED lights blinking.

○ 5 Years Warranty

The outstanding Daikin Cooling King M-Series comes with 5 years warranty on the compressor.



○ Specifications

MODEL	INDOOR	Wireless	FT10MV1I	FT15MV1I	FT20MV1I	FT20MV1I	FT25MV1I
		Wired	FT10MV1J	FT15MV1J	FT20MV1J	FT20MV1J	FT25MV1J
	OUTDOOR		R09CV1	R15CV1	R18CV1	R20CV1	R25CV1
TOTAL COOLING CAPACITY		Btu/hr	10,000	13,000	18,000	19,500	24,000
TOTAL POWER		W	980	1,220	1,630	1,850	2,675
TOTAL CURRENT		A	4.38	5.36	7.16	8.12	12.00
EER		Btu/hr/W	10.20	10.66	11.04	10.54	8.97
POWER SOURCE		V/Ph/Hz	220-240/1/50				
REFRIGERANT TYPE			R22				
INDOOR AIR FLOW		CFM	342	355	531	531	614
SOUND PRESSURE LEVEL (HI/LO)		dBA	38 / 27	40 / 29	42 / 36	42 / 36	46 / 40
DIMENSION (HXWxD)	INDOOR UNIT	mm	288 x 800 x 216	288 x 800 x 216	310 x 1,065 x 233	310 x 1,065 x 233	310 x 1,065 x 233
	OUTDOOR UNIT	mm	497 x 600 x 245	543 x 700 x 250	654 x 855 x 328	654 x 855 x 328	756 x 855 x 328
UNIT WEIGHT	INDOOR UNIT	kg	9	9	14	14	14
	OUTDOOR UNIT	kg	25	28	43	43	50
COPPER PIPE SIZE	LIQUID	mm / in	6.35 / 1/4	6.35 / 1/4	6.35 / 1/4	6.35 / 1/4	9.52 / 3/8
	GAS	mm / in	9.52 / 3/8	12.7 / 1/2	15.88 / 5/8	15.88 / 5/8	15.88 / 5/8

Notes:

1) DUE TO OUR POLICY OF INNOVATION, ALL PRODUCT SPECIFICATIONS ARE SUBJECT TO CHANGE WITHOUT PRIOR NOTICE.

2) ALL UNITS ARE BEING TESTED AND COMPLY TO INTERNATIONAL STANDARDS SUCH AS ISO 5151 AND AHRI 210/240.

3) NOMINAL COOLING CAPACITY ARE BASED ON THE CONDITIONS BELOW:
COOLING - 27°C DB / 19°C WB INDOOR AND 35°C DB / 24°C WB OUTDOOR

4) SOUND PRESSURE LEVELS ARE MEASURED IN OYLM R&D SOUND ROOM.



GROUP ASSOCIATED (C&L) SDN BHD (109719-M)

Head Office: Tel: 03-7718 8388

Email: sales_enquiry@daikinmalaysia.com.my, customer_service@daikinmalaysia.com.my

Branches:

- Penang Tel: 04-331 1670
- Pahang Tel: 09-567 6778
- Melaka Tel: 06-288 1133
- Sarawak Tel: 082-333 299
- Kedah Tel: 04-733 0235
- Johor Tel: 07-557 7788
- Perak Tel: 05-548 2307
- Sabah Tel: 088-722 194
- Negeri Sembilan Tel: 06-768 8969
- Kelantan Tel: 09-747 4678

Authorized dealer: