

Pre-Insulated Aluminium Duct



- | | |
|---|---|
| 01 Access door | 08 Grille installation |
| 02 Flexible connection | 09 Section bar for dampers installation |
| 03 Flexible duct | 10 Hanging bracket |
| 04 Reinforcement bar | 11 Branch connection flange |
| 05 Damper quadrant set | 12 Modular damper |
| 06 Section bar for grilles installation | 13 Tap-in collar |
| 07 Turning vanes | |



Pre-Insulated Aluminium Duct



GTG Industries Sdn Bhd

(912584-W)

No. 13, Jalan Astaka U8/88B
Section U8, Bukit Jelutong
40150 Shah Alam, Selangor.

TEL +603-7859 0213/0216/0217 FAX +03-7859 0218

EMAIL inquiry@gtg.com.my WEBSITE www.gtg.com.my



SCAN & VISIT OUR WEBSITE



Specification subject to changes without prior notice.

ID : GTI / G1 / 271022





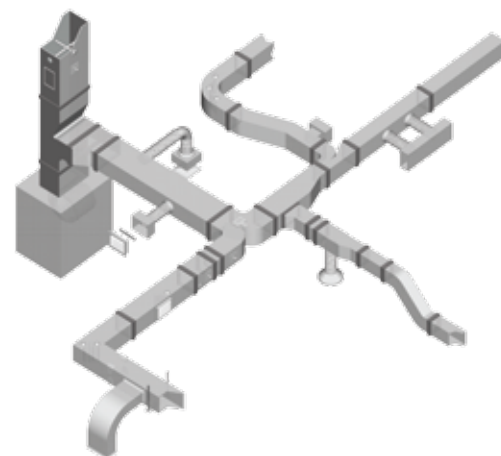
Pre-insulated Aluminium Duct

Introduction

GTG pre-insulated aluminium duct is a double skin PIR (Polyisocyanurate). Pre-insulated panel which is composed of 1 layer of high density FIRE RETARDANT RIGID PIR foam panel sandwiched with 2 layers of 80 microns aluminium foil with anti-mold and bacteria coating. This panel is specially designed for air conditioning ductwork that requires constant insulation property for energy conservation.

Specifications

Range	GDI
Type	PIR
Thickness of panel	20mm
Compressive strength	200 N/mm ²
Friction coefficient	0.0135
Humidity	0 – 100%
Density	52 kg
Thermal conductivity – K factor (W/m C)	0.020
Fire resistant	Class 'O'
Weight (Kg / m ²)	1.46
Working temperature	-60°C to 80°C
Pressure in duct (Max)	2,000 Pa
Air flow velocity (Max)	12 m/s
Green product	Non CFC and Zero ODP



Type of finishing on Aluminium Foil

Standard

Emboss on both sides of the aluminium foil

Optional

- 1) 1 side embossed aluminium foil and 1 side smooth aluminium foil
- 2) 1 side embossed aluminium foil and 1 side smooth **aluminium sheet**
- 3) 2 side powder coated GI sheet

Features

Fire Retardant

Class 'O' tested in accordance to BS 476 : part 7 : 1997 by Sirim QAS Malaysia.

Constant Thermal Insulation

Factory pre-insulated panel provides constant thermal insulation throughout the whole ductwork system thereby ensures no water condensation due to poor workmanship in fiberglass insulation on site.

Light Weight

In general, it is 5 to 6 times **lighter** than sheet metal duct. GTG panel is 1.46kg/m² compares to 9.8 kg/m² for 18G GI sheet metal with 2" 2lbs density fiberglass insulation, this feature will reduce building cost and ductwork installation cost.

Low Energy Consumption

With constant thermal insulation coupled with **low air leakage** will reduce heat gain that will ensure the air conditioner operating at **lower running cost**.

Low Fabrication And Installation Cost

No manpower in duct insulation + light weight + speedy fabrication = **Low ductwork cost**.

Low Air Leakage

Very **low air leakage** with special designed duct accessories.

Low Noise Operation

With the combination of thickness uniformity and its microporous structure , vibration and reverberation are kept to the minimal level that will result in **low noise operation**.

No Noise Pollution On Site

By elimination of the usage of sheet metal will ensure **no noise pollution** on site.

Hygienic Environment

NO fiberglass insulation that will ensure a hygienic environment **forever**.

Green Product

Non CFC and Zero ODP. **Right choice for green building**.

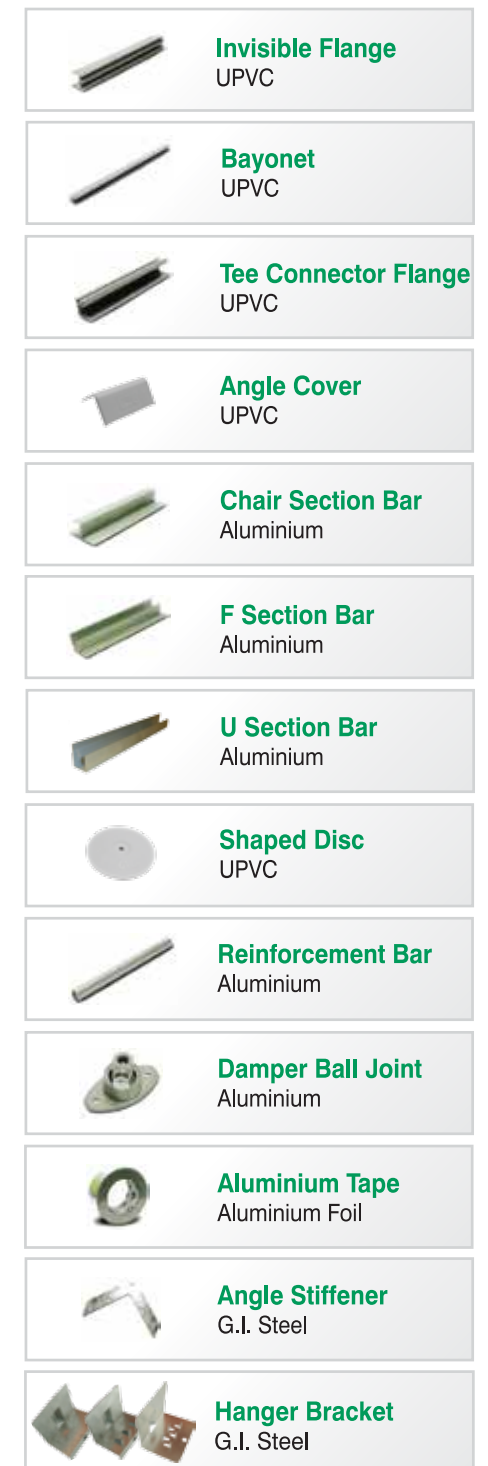
Low Investment Cost

No need investment on expensive CNC duct machine, **only simple toolings are required**.

Special Tools



Accessories



Clip Lock System

Union Joint
Aluminium



Clip Lock and Corner Joint
Aluminium

* Patent Approved (MY-188091-A)

