



# *KCR Series*

**ANTI-CORROSIVE CENTRIFUGAL FAN**



# Anti-Corrosive Centrifugal Fan - KCR Series



## Features

The KCR series is anti-corrosive SISW centrifugal fan suitable for extraction of corrosive fumes and gases.

### Housing

Housing is manufactured in glass fiber plastic.

### Motor

Totally enclosed Class F motor, IP 55 protection is fitted as standard. Motors up to 2.2kW are usually supplied on DOL starting.

### Wheel

The wheels have backward curved blades manufactured in glass-reinforced polypropylene (PPG).

### Balancing Quality

All wheels are statically and dynamically balanced to ISO1940 and AMCA 204-G2.5 standard. All fans after assembly are trimmed to ISO1940 and AMCA 204-G2.5 standard. Other standard other than G2.5 is available upon request.

### Fan Rotation and Discharge

The rotation and discharge of the fan is in accordance with AMCA standard 99-2406. The direction of rotation is determined from the drive side of the fan.

	90°	270°	360°
CW			
CCW			

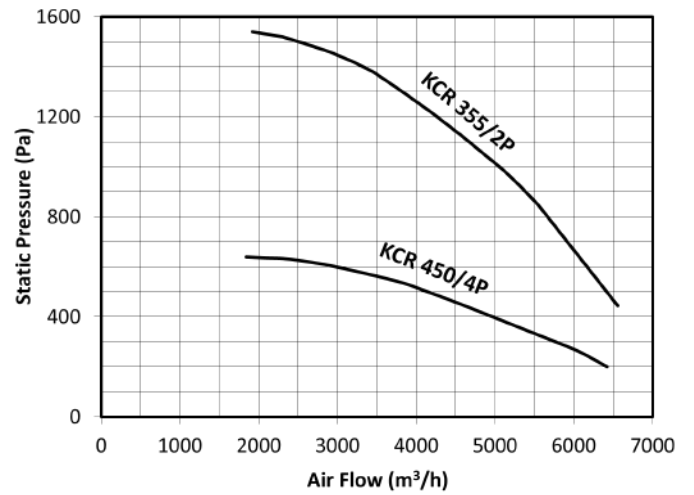
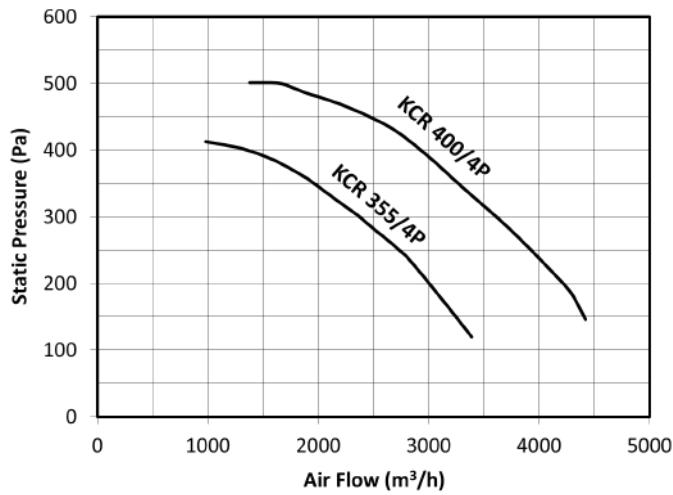
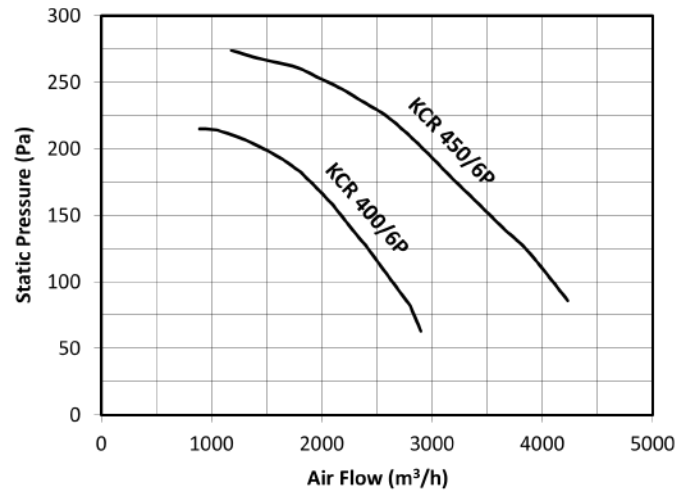
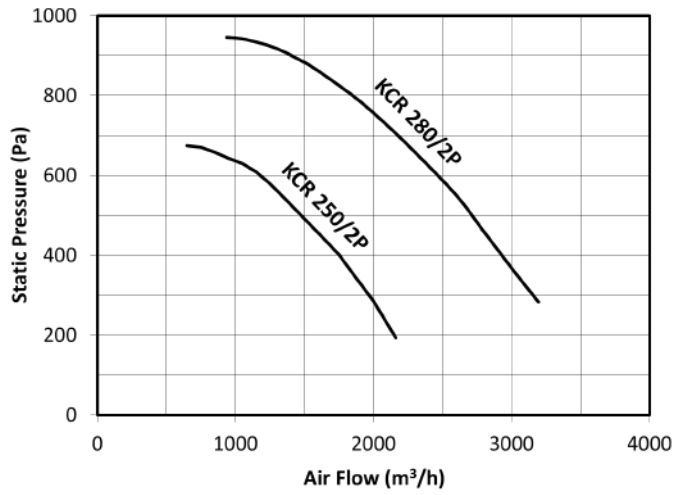
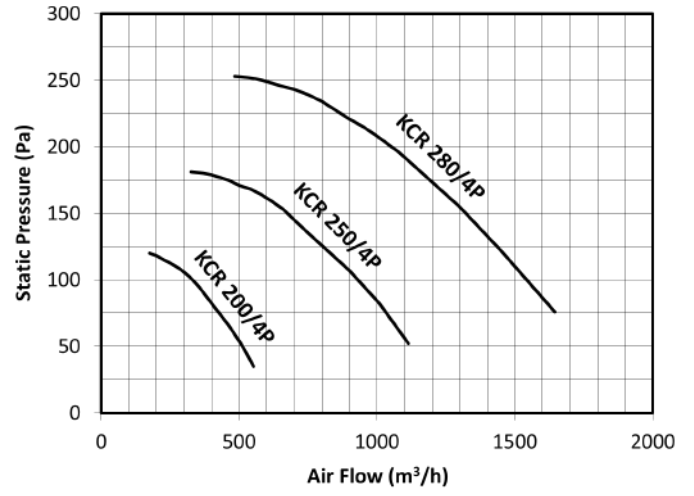
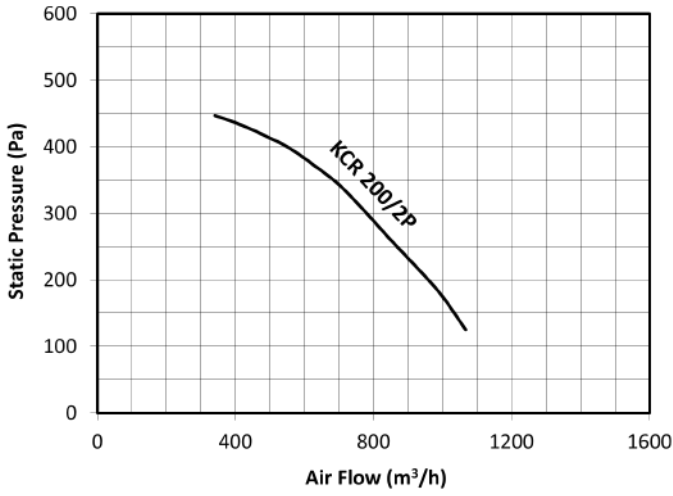
## Technical Data (Direct Driven)

Model	Max Q CMH	Max Ps Pa	Motor Power kW	Phase	Hz	Voltage (V)	Insulation Class	Lp, at 3m dB(A)	RPM	Approx. Weight kg
KCR 200/2P	1067	447	0.37	3	50	415	F	63	2800	30
KCR 200/4P	552	119	0.37	3	50	415	F	45	1400	30
KCR 250/2P	2161	676	0.37	3	50	415	F	68	2800	34
KCR 250/4P	1119	181	0.37	3	50	415	F	50	1400	34
KCR 280/2P	3195	948	0.75	3	50	415	F	71	2800	42
KCR 280/4P	1654	254	0.37	3	50	415	F	54	1400	38
KCR 355/2P	6558	1543	2.2	3	50	415	F	77	2800	58
KCR 355/4P	3396	413	1.1	3	50	415	F	59	1400	58
KCR 400/4P	4435	502	1.1	3	50	415	F	63	1400	60
KCR 400/6P	2905	215	0.75	3	50	415	F	56	950	60
KCR 450/4P	6434	639	1.1	3	50	415	F	66	1400	61
KCR 450/6P	4215	274	0.75	3	50	415	F	57	950	61

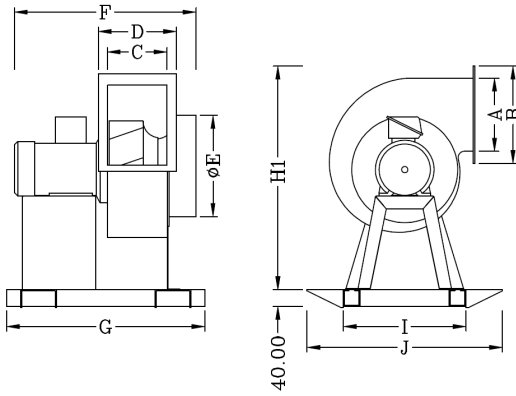
- Speed (RPM) shown is nominal. Performance is based on actual speed of test. Performance ratings do not include the effects of appurtenances (accessories).

- dB(A) at 3m measured at inlet side, free field.

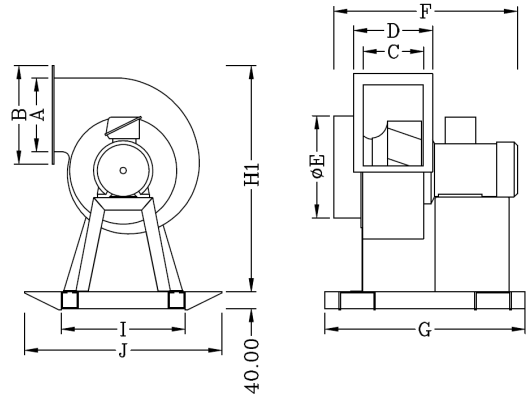
- Weight include fan and Kruger standard motor.



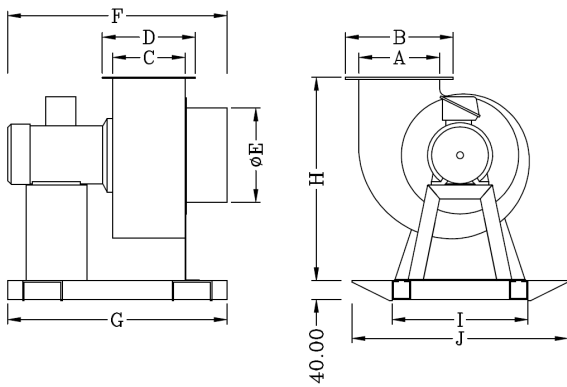
**CW 90**



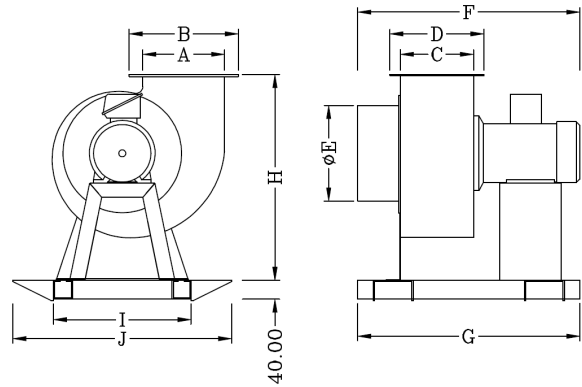
**CCW 90**



**CW 360**

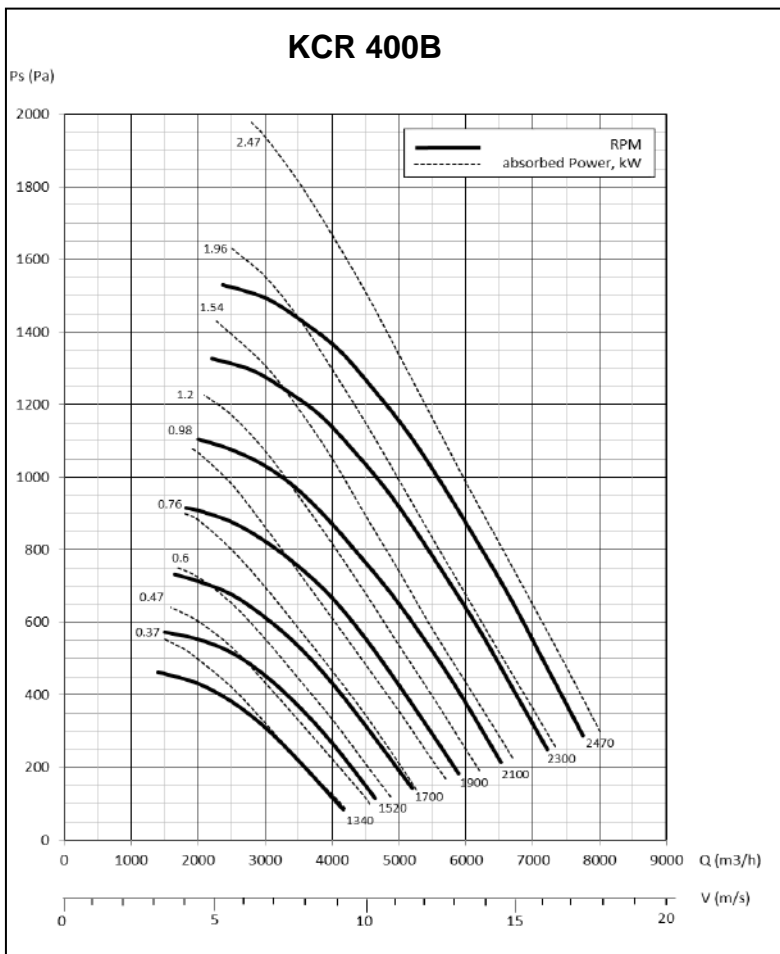


**CCW 360**

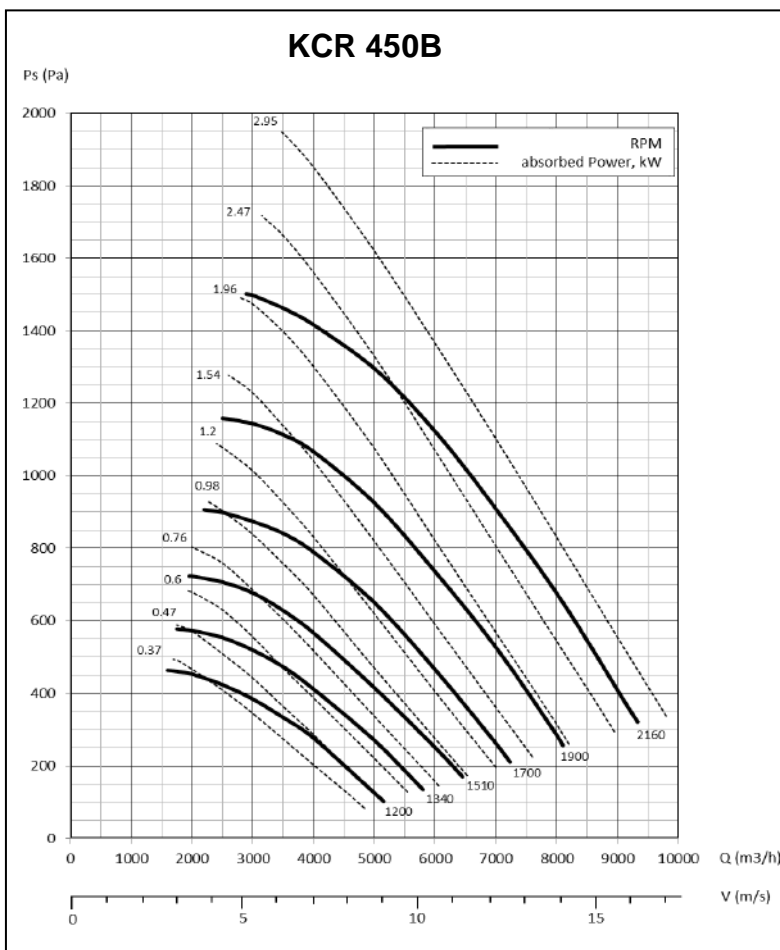


Overall Dimension (Direct Driven)												
Model	Motor Frame Size	A	B	C	D	E	F	G	H	H1	I	J
KCR 200	71	165	245	150	230	200	495	480	425	563	264	436
KCR 250	71	180	260	190	270	250	528	500	515	656	320	492
KCR 280	71	200	280	200	280	280	544	550	590	708	352	524
	80						560					
KCR 355	90S	280	360	230	310	355	662	680	747	942	450	622
	90L						687					
KCR 400	90S	330	410	274	354	400	694	700	861	1046	500	672
	90L						719					
KCR 450	90S	330	415	295	375	450	730	740	881	1079	550	722
	90L						755					

All dimensions in mm.

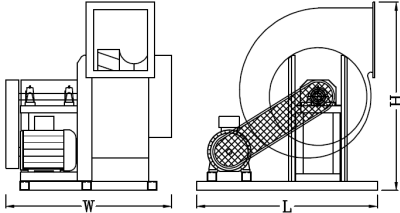


- Maximum fan speed 2470 rpm.
- Performance ratings do not include the effects of appurtenances (accessories). Power rating kW does not include transmission loss.

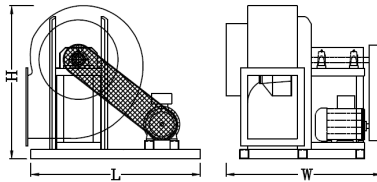


- Maximum fan speed 2160 rpm.
- Performance ratings do not include the effects of appurtenances (accessories). Power rating kW does not include transmission loss.

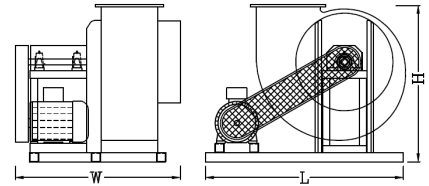
CW 90 (Pos Z)



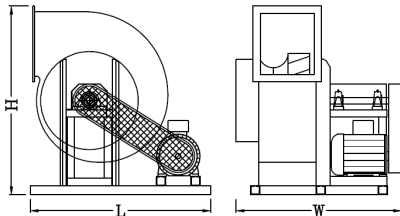
CW 270 (Pos W)



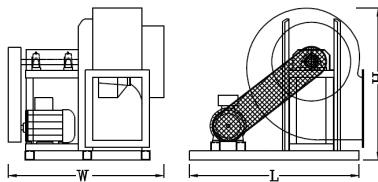
CW 360 (Pos Z)



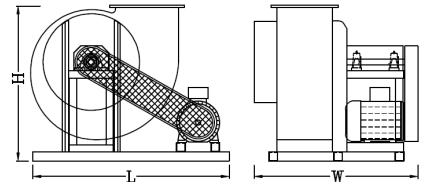
CCW 90 (Pos W)



CCW 270 (Pos Z)



CCW 360 (Pos W)



**Overall Dimension (Belt Driven)**

Model	Motor Frame Size	90°			270°			360°			Approx. Weight (kg)
		W	H	L	W	H	L	W	H	L	
KCR 400B	D80	862	1020	940	862	844	940	862	837	940	84
KCR 400B	D90	862	1020	940	862	844	940	862	837	940	100
KCR 400B	D100	862	1020	990	862	844	990	862	837	990	115
KCR 400B	D112	862	1020	990	862	844	990	862	837	990	137
KCR 450B	D80	909	1031	940	909	883	940	909	858	940	90
KCR 450B	D90	909	1031	940	909	883	940	909	858	940	104
KCR 450B	D100	909	1031	990	909	883	990	909	858	990	120
KCR 450B	D112	909	1031	990	909	883	990	909	858	990	132

- All dimensions in mm.

- Weight include fan, drive and Kruger standard motor.

The company is always improving and developing its products, therefore the company reserves the right of making changes to the illustrated products. Certified dimension can be provided upon request.