



GLOBE VALVES

APPLICATIONS

Globe valves can be used on refrigerating systems in order to intercept the refrigerant fluids CFC, HCFC and HFC.

CONSTRUCTION

Globe valves are manufactured in two basic types: 6510 with straight connections and 6530 with angle connections. Valves 6520, which have straight connections, are supplied with flanges. In this application, copper pipe is soldered on a brass bush and not directly on the valve. Globe valves have large orifices to keep the pressure drop to a minimum. On the top of the caps there is a square seat, fitting it on the spindle it is possible to use the cap as an operating wrench.

The materials used for the main parts are:

- ST-UNI EN 12165 - CW 617N hot-forged brass for body, plug and cap;
- especially treated steel for spindle;
- aramidic and chloroprene gaskets for gland seal;
- chloroprene rubber (CR) for outer seal gaskets;
- P.T.F.E. for seat gasket.

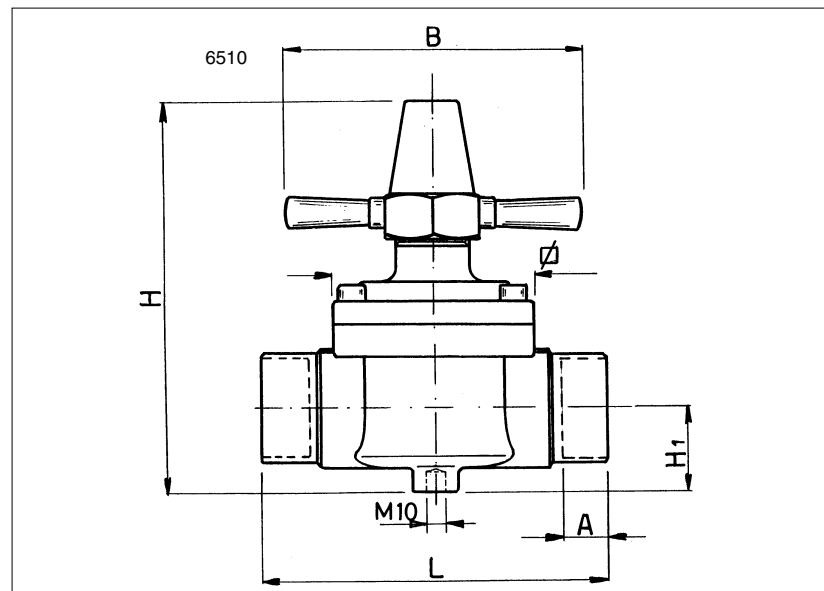


TABLE 1 - General Characteristics

Catalogue Number	Connections		kv Factor [m ³ /h]	MAX Pressures [bar]	Fluid Temperature [°C]		Dimensions [mm]						Weight [g]	
	ODS Ø				min	max	A	B	H	H ₁	L	□		
	[in.]	[mm]												
6510/M22	-	22	7,1											1415
6510/7	7/8"	-												1420
6510/M28	-	28	8,4											1320
6510/9	1.1/8"	-												1320
6510/11	1.3/8"	35	15,0											1885
6510/13	1.5/8"	-	25											3600
6510/M42	-	42												3620
6510/17	2.1/8"	54	40,0											4930
6520/7	7/8"	-	7,1											2280
6520/9	1.1/8"	-	8,4											2150
6520/11	1.3/8"	35	15	30	-35	+100	-	126	166	34	185	68		3865
6520/13	1.5/8"	-	25				24	138	199	37	217	88	5845	
6520/M42	-	42												
6520/17	2.1/8"	54	40,0				25	-	215	42,5	255	104		8705
6530/M22	-	22	8,2											1305
6530/7	7/8"	-												1305
6530/M28	-	28	9,1											1240
6530/9	1.1/8"	-												1240
6530/11	1.3/8"	35	18,7				25	126	165	52,5	59	68		1895
6530/13	1.5/8"	-	38											5165
6530/M42	-	42												5165
6530/17	2.1/8"	54	48,5											4900

