

# TOILET & BATHROOM SYSTEM



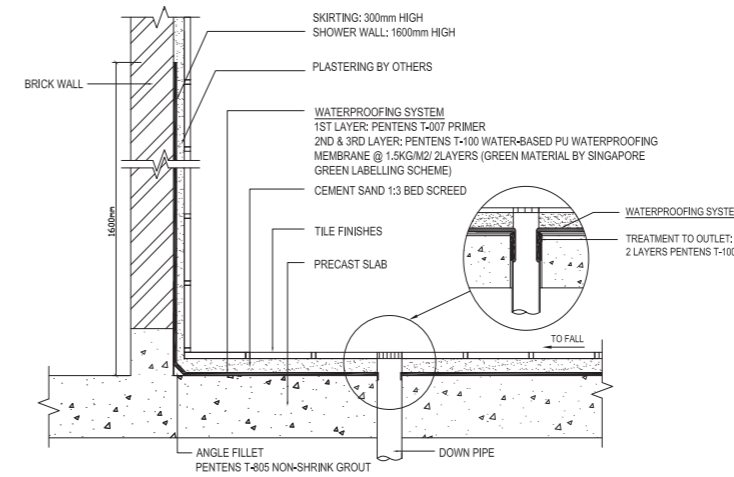
Waterproofing in toilets is critical in the prevention of seepage to the concrete. The consequences of seepage include the hassle and inconvenience to the daily life, degradation of structural integrity of the concrete slab and structures, growth of mold and mildew, and deterioration in indoor air quality due to increase dampness. Pentens T-100 provide a better water and vapour proof in complicating application surface compare to membrane-type and ensure better integrity between applied surfaces and waterproofing coating.

## Pentens T-100 Technical Data

Elongation ASTM D412-06ae2 (%)	Tensile Strength (kgf/cm <sup>2</sup> ) ASTM D 412-98	Tear Strength (kgf/cm <sup>2</sup> ) CNS 6986	Puncture (kgf) ASTM E154	Chemical Resistance 10% HCOOH, 600,24hrs
1128	20.90	11	1.6	No Changes on the surface of the sample

## Pentens T-100 Advantages:

- Low VOC.
- Environmentally friendly.
- Easy to application.
- High elasticity.
- Superb adhesive strength.
- Can be applied directly on damp or wet surfaces.
- Suitable in hot and humid tropical climate.
- Resistant to any bubbling or side osmosis
- No phenomenon even submerges in water for a long time.
- Capable of re-application.
- Non-toxic.



## Toilet & Bathroom Waterproofing Application

- Primer : Pentens T-007
- 1st Layer : Pentens T-100
- 2nd Layer : Pentens T-100



## Pentens T-100 Green Test Data

Heavy Metals: (EPA 3025 / EPA 6010B : ICP)	
A. Cadmium (d)	Not Detected
B. Lead (Pd)	Not Detected
C. Total Chromium (Cr)	Not Detected
D. Mercury (Hg)	Not Detected
Volatile Organic Compounds (ISO 11890-2) (g/L)	0.53
Total Halogenated Organic Solvent (ISO 11890-2) (%)	Not Detected
Total Aromatic Organic Solvent (ISO 11890-2) (%)	Not Detected
Epichlorohydrin (ISO 11890-2) (%)	Not Detected
N-Methyl Pyrrolidinone (ISO 11890-2) (%)	Not Detected
Formaldehyde (High Performance Liquid Chromatography) (%)	Not Detected
Alkyl Phenol Ethoxylate (LCMS-MS) (%)	Not Detected
Flash Point (ASTM D3828-07a) (°C)	>61

