

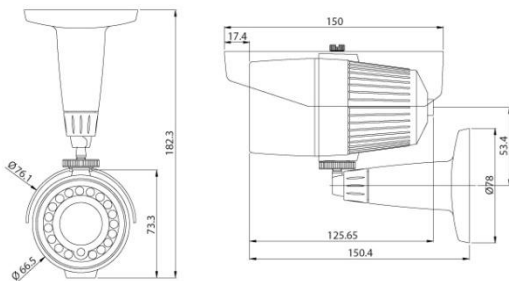
WCD-50VF / WCD-51VF



FEATURES

- 1/3" 960H CCD
- High Resolution : 700 TV Lines
- Built-in Vari-focal Lens (f=2.8~10.0mm)
- Intelligent IR Technology
- Built-in IR LED(18EA)
- Digital WDR (36dB)
- TDN(ICR), DNR, OSD
- Min. Illumination : 0.00Lux (IR LED On)
- Privacy Zone, Motion Detection
- Eclipse(HLC), Mirror Function
- Weather Proof Housing
- 65mm in Diameter
- 12VDC
- IP66

DIMENSIONS



SPECIFICATIONS

	WCD-50VF	WCD-51VF
Signal System	NTSC	PAL
Scanning System	2:1 Interlace	
Scanning Frequency (H) / (V)	15.734 KHz / 59.94 Hz	15.625 KHz / 50 Hz
Image Sensor	1/3" 960H CCD	
Effective Pixels	976(H) x 494(V) 480K	976(H) x 582(V) 570K
Horizontal Resolution	700 TV Lines	
Video Output	1.0V p-p (75Ω Unbalanced, Composite)	
S/N Ratio	More than 50dB(AGC Off)	
Lens	Vari-focal Lens (f=2.8~10.0mm)	
Day & Night Type	ICR(Cds type)	
Digital WDR	Max. 36dB	
Min. Illumination	0.00 Lux (IR LED On), F1.2, 30IRE	
OSD	7 Languages (English, Japanese, German, French, Russian, Portuguese, Spanish)	
IR LED and Sensor	Intelligent IR Technology IR LED 18EA (850nm, 30°) & 1 Sensor	
IR LED Visible Range	Max. 20m	
White Balance	ATW, PUSH, USER1, USER2, ANTI CR, MANUAL, PUSH LOCK	
AGC	AUTO(OFF, 37dB), MANUAL(6.00dB ~ 44.80dB)	
BLC / HLC	On / BLC / HLC	
DNR	Off / 2D	
Motion Detection	On / Off (4 Zone)	
Privacy Zone	On / Off (4 Zone)	
Mirror	On / Off	
Operating Temp. / Humidity	-10°C ~ +50°C / 30% ~ 80% RH	
Shutter Speed	1/60~1/10,000 Sec.	1/50~1/10,000sec.
Supplied Voltage	12VDC	
Power Consumption	Max. 3W/ 250mA	
Dimensions(ØxH)	78.0 x 150.0mm	
Weight	Approx. 800g	