



Features

H.264 / MPEG4 / JPEG

Recording Mode:

1080P(1920*1080) / 720P(1280*720) / D1(704*480)

Manage Video & Audio from IP Camera incl.

Max. **1080p 4/8/16CH Decoding & Display**

Auto Searching & Setting IP Camera in LAN

Network Access up to 25 users

Max. **2 SATA HDD up to 6TB** & USB External Device

1 HDMI, 1 VGA & 4/1 Audio

4 Sensor / 1 Alarm out

Easy Control : Remote controller / Mouse

Client Viewer, CMS & Mobile Viewer, Free DDNS server



Easy to install IP Camera

- One Plug All IP
- Run Auto Configuration Wizard



Efficient CCTV Live streaming

- CCTV image information received unicast and multicast transport
- Video server / IP camera network traffic for distributed processing



Various multi codec

- H.264, MPEG4, MJPEG



Stable System

- Watch-dog
- Self-diagnosis



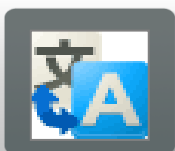
Customized Monitoring System

- QCMS
- 4/8/16 /30 CH of NVR
- HD SDI/ 960H monitoring



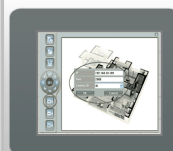
Friendly user Interface

- PTZ Control
- Notification from Alarm & Sensor



Quick search / Backup

- Bookmark search
- Calendar search
- AVI file



3rd Party System integration

- SDK & API
- GIS (E-MAP)
- ONVIF Profile-S

Specifications

Model		MNVR04	MNVR08	MNVR16
Video	Input	Max. 4 (Up to 4CH@1080P/ 4CH@720P)	Max 8 (Up to 4CH@1080P/ 8ch@720P/ D1)	Max 16 (Up to 8ch@720P/ 16ch@ D1)
	Output	1 HDMI, 1 VGA		
Audio	Input(via Network)	4	8	16
	Output	1	1	1
Recording	Compression	H.264 / JPEG / MPEG4		
	Resolution	1080P(1920x1080) / 720P(1280x720) / D1(704x480)		
	Recording Mode	Normal / Event(Alarm, Motion), Schedule		
	Rec. Frame	120FPS@1080P / 120FPS@720P / 120FPS@D1	120fps@1080p / 240fps@720p/ 240fps@D1	120fps@1080p / 240fps@720p / 480fps@D1
Display	Multi-screen Display	1/4	1/4/9	1/4/9/16
	Output	1080P / 1080i / 1024x768 to 1920x1080		
Playback	Display Mode	1/4	1/4/9	1/4/9/16
	Playback Mode	Date & Time, Calendar, Event(Alarm, Motion, Audio), Bookmark		
	Search Mode	Normal, REW(*1,*2,*4,*8,*16) & FF(*1,*2,*4,*8,*16), Frame to Frame, Pause/Slow REW/FF(1/2, 1/4, 1/8, 1/16, 1/32)		
	Still Image	JPEG, BMP Compression or Exclusive Format & USB I/F Device(Momory Stick)		
Network	Interface	Ethernet*2(for IP Camera & Client PC)		
	Protocol	2 TTL (Terminal Block NO/NC Programmable)		
	Serial Comm.	RS-485*2(PTZ & Keyboard control)		
	PC Client	Windows 2000 / XP(PC Client System) / Windows Vista		
	Browser	Internet Explorer 5.0 or Later		
	Event	E-mail notification		
	Viewing/Access	Remote Client, CMS, Mobile View / Up to 25 Users		
Archive	Interface	USB 2.0 x 2		
	Archive Device	Network, Memory Stick, External Storage		
Control	Event Log	Up to 5000 Logs(Video & Power Loss, Power & Record On/Off, Menu set)		
	Controller	IR Remote Control/Mouse		
	Pan/Tilt Camera	Control From RS485 Interface / Via Network		
Sensor In & Alarm Out		4/1		
Storage	Internal HDD	Max. 2 SATA & up to 6TB		
Other	Operating Temperature	5C ~ 40C (41F ~ 104F)		
	Operating Humidity	0% ~ 80% / Non-Condensing		
	Power	DC12V, 3.5A		
	Dimensions (WxHxD)	350 x 72 x 250 (mm)		
	Weight	Approx. 3Kg (Without HDD)		