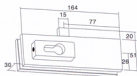


US 10 Corner Lock



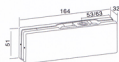
Finish : PSS



PT 20 Top Patch



Finish : PSS



PT 10 Bottom Patch



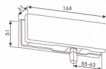
Finish : PSS



PT 30 TOP PATCH (WALL)



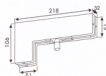
Finish : PSS



PT 40 L PATCH



Finish : PSS



The basic floor spring designed for light traffic action doors

With the BTS 60, DORMA offers a floor spring that is designed for light use double action doors for basic requirement.

It is used for the standard double action doors with the door width up to 1000 mm and a maximum door weight of 80 kg.

Closing speed adjustment is optimized with two regulating valves.

The compact and shallow design ensures an ideal application for limited floor depth.

Benefits

For the trade

- Low cost solution for low traffic doors.
- Standard solution including accessories.

For the installer

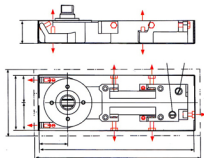
- Easy installation thanks to shallow design.
- Easy to adapt to individual requirements with dual valve control 130° to 15° and 15° to 0°.

For the architect/specifier

- Easy solution for single leaf doors.
- Door weights up to 80 kg and door width up to 1000 mm.
- Minimum floor recess dimension.

For the user

- DORMA quality in the basic segment.
- Comfortable door operation with low effort.
- Optional mechanical hold-open at 90°.



Technical Data

BTS 60

Spring strength	Size	3
Standard doors ¹⁾ 2)	≤ 1000 mm	•
Max. door weight in kg		80
Closing speed variable by valve adjustment	130°-15° 15°-0°	•
Backcheck		-
Hold-open point 90°		○
Weight in kg, approx.		4,4
Dimensions in mm	Length	274
	Width	97
	Height	40
• Yes -No ○ Option		

1) For applications involving particularly high or heavy doors, and doors which have to close against wind or draught conditions, the next larger closer size or the DORMA BTS 80 should be selected.

2) Max. opening 130°.

Door stop necessary for doors which can open further than 130°.

Standard and optional functions

Closing ranges

The floor spring has two controlled closing ranges:
Valve 1: 130°-15°
Valve 2: 15°-0°

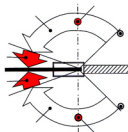
1 Infinitely variable closing speed in the range 130°-15°.

2 Second closing range 15°-0°.

Hold-open

With optional integrated single-point hold-open at 90°.

3 Hold open at 90° (optional extra).



PC 91



Material : Solid brass
Feature : 5 pins
Function : Double cylinder



PC 82

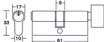


Material : Solid brass
Feature : 6 pins
Function : Double cylinder



PC 93

Material : Solid brass
Feature : 5 pins
Function : Single Cylinder with Thumb Turn

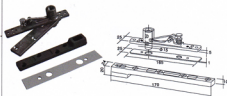


PC 83

Material : Solid brass
Feature : 6 pins
Function : Single Cylinder with Thumb Turn



AL Accessories(100kg)



721 Bottom Stap(300kg)



Standard Equipment And Accessories

STB 80
floor spring

STB 57V
floor spring



Standard	5	7.5	10	12.5
45200401				
45200402				
45200403				
45200404				
45200419				

Universal application, Individual functions and assured quality

Whether standard, narrow or wide, whether LH, RH, or single or double action DORMA BTS 80 and BTS 75 V floor springs are designed for all types of door. A comprehensive program of accessories ensures that they can be used successfully with a wide variety of door constructions and floor coverings.

Thanks to a wide range of functions, which can be individually selected to suit different requirement, DORMA BTS 80 and BTS 75 V floor springs offer maximum reliability and quality.

Certified to ISO 9001.

Benefits

For the trade

- Reduced stock requirements because of separate, interchangeable spindles.
- Slim product range offering all key functions.

For the installer

- Suitable for installation with LH or RH single and double action doors.
- Interchangeable spindles enable easy adaptation to structural conditions - even when retrofitted.

For the architect/specifier

- Concealed installation for maximum visual elegance
- All essential functions provided
- Proven, robust design capable of withstanding leaf weights of up to 300 kg (BTS 80).

For the user

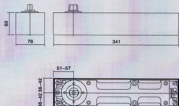
- Constant, temperature-independent closing cycle.
- Highly efficient mechanism gives maximum user convenience.

Data and features		BTS 80	BTS 75V
Spring strength (EN)		3	4
Spring strength adjustment		-	-
Standard and external doors ¹⁾	≤ 950mm	●	-
	≤ 1100mm	-	●
	≤ 1400mm	-	●
Fire and smoke check doors		-	-
Max. leaf weight (kg)		300	120
Non-handed, suitable for single and double action doors		●	●
Closing speed adjustable by valve	175°-0°	●	-
	175°-15°	-	●
	15°-0°	-	●
Backcheck, mechanical		●	●
Delayed action adjustable by valve (selectable alternative to the hold-open feature)		●	-
Hold-open	Adjustable	●	-
	Fixed 90	-	●
	Fixed 105	-	●
Coverplate secured to floor spring	Cement box	-	-
	floor spring	●	●
Weight in kg		7.1	3.0
Dimensions in mm	Length	341	285
	Width	78	82
	Height	60	50
Floor spring tested to EN 1154		●	●
CE Mark for building products (products with factory-fitted hold-open do not carry a CE mark)		-	●

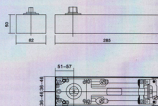
- yes - no

¹⁾For applications involving particularly high or heavy loads, and doors which have to close against wind or draught conditions, the next larger spring strength should be selected.

BTS 80



BTS 75V



The economic double action floor spring

Special shallow design optional hold-open.

The DORMA BTS 84 is a double action floor spring which has been specially developed for the aluminium and toughened glass door industries.

This unit is intended to complement our internationally acclaimed RTS concealed overhead door closer by giving the shop-fitting industry the option of a DORMA quality floor spring designed for their particular purpose.

The BTS 84 has many of the features of the other DORMA BTS closers with the addition of reduced depth and an array of accessories designed for the aluminium door fabricator and toughened glass door manufacturer.



Quality-assured manufacture to:
BS 1000,
EN 7900,
BS 1750
Certified and verified by BS
Quality Assurance
Reg. No. 0-6423/UM 10756

Plus points

For the trade

- Outstanding value for money.
- Also available with stronger and weaker springs for special requirements.

For the installer

- Easy installation thanks to shallow design.
- Easy to adapt to individual requirements with dual valve control 130° to 0° and 130° to 20°.
- Interchangeable spindle inserts available to suit site conditions.

For the architect/specifier

- Concealed unit for invisible installation.
- Minimum floor recess dimension.
- Proven, robust unit for door weights up to 100kg.

For the user

- Thermoconstant smooth operation.
- High mechanical efficiency for easy door opening.
- Optional single point hold-open

Technical Data

BTS 84

Spring strength	En2	En3	En4
Standard	●	-	-
up to 850mm	-	●	-
up to 950mm	-	-	●
up to 1100mm	-	-	●
Closing speed variable by valve adjustment	●	●	●
Backcheck	-	-	-
Delayed action	-	-	-
Hold-open point	90°	○	○
or	105°	○	○
Weight in kg, approx.	5.0	5.0	5.0
Dimensions in mm	306	306	306
	108	108	108
	40	40	40
Door closer tested to EN 1154	●	●	●
● Yes - No ○ Option			

1) For applications involving particularly high or heavy doors, and doors which have to close against wind or draught conditions, the next larger closer size or the DORMA BTS 80 should be selected.

2) Max. opening 130°.

Door stop necessary for doors which can open further than 130°.

1. Valve for closing speed adjustment 130° - 0°

2. Valve for increasing closing speed 130° - 20°

