

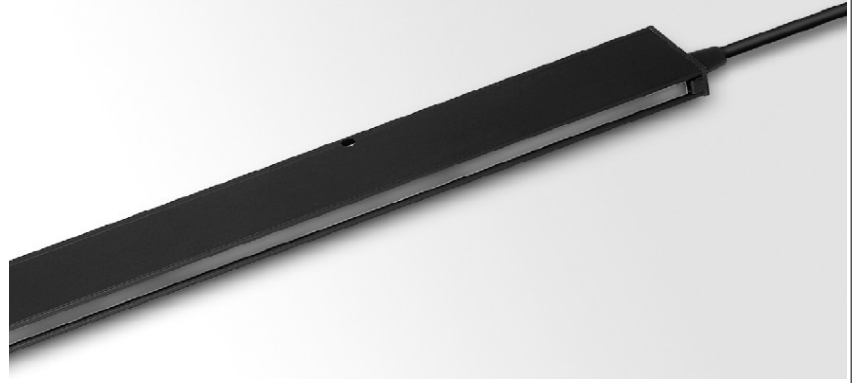
## IOS SERIES LIGHT CURTAIN



TYPE: IOS-2000-4M-1

### Description

- \*4 metre sensing range
- \*96 crossed beams
- \*Active height of 1817 mm
- \*Detector length of 2000 mm
- \*Plug type connection
- \*Easy Alignment
- \*Slim line design (10 x 24.5 mm)
- \*Power, output and signal indicators
- \*External power supply
- \*Buzzer function is provided
- \*Operated by MCU Microchip.



The IOS light curtain system consists of a transmitter detector, and a receiver detector, which are to be positioned opposite of each other.

The detectors are housed in a aluminium profile available in a slim line design (10 x 24.5 mm).

Installation is easy and straight forward.

It is widely used in shutter doors, industrial doors, gates and elevator doors for protection purpose.

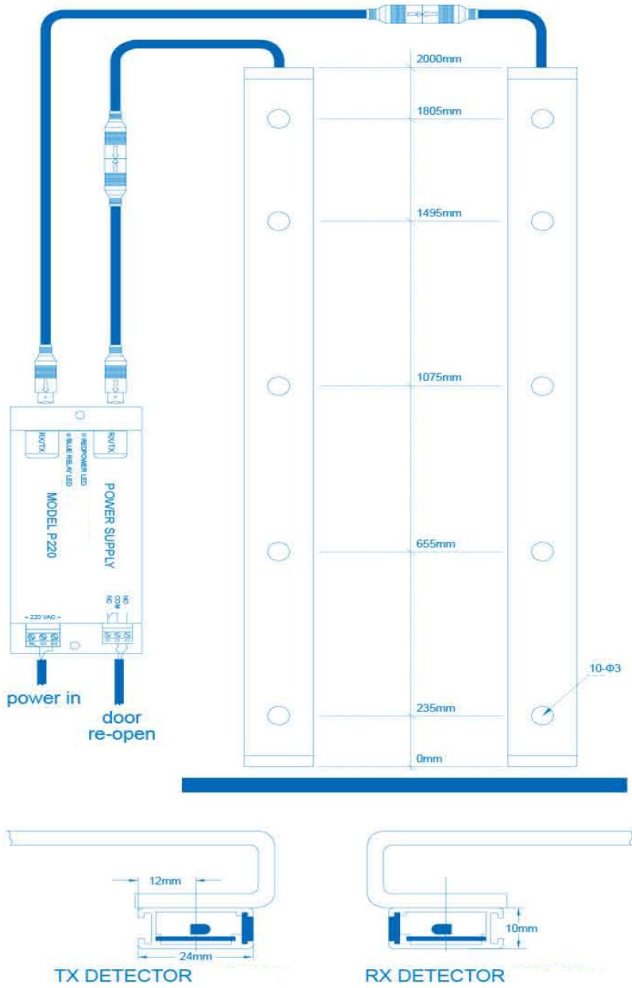
### Technical Data

Power input	230Vac
Working principle	Opposed mode: Consists of transmitter & receiver
Number of channels	17
Channel spacing	118mm
Highest beam	1840mm
Lowest beam	23mm
Number of crossed beams	96
Sensing range	0-4000mm
Output signal	1C relay
Vertical displacement at 0mm	+/- 20mm
Horizontal displacement at 0mm	+/- 3mm
Angular displacement at 0mm	+/- 10degrees
Cable lifespan	20million movements
Light immunity	<100000LUX
EMC compliance	Emission to EN12015, Immunity to EN12016
Operating temperature	-20°C ~ +65°C
Dimension	10mm(thickness) x 24.5mm(Width) x 2000mm(height)
IP Rating	IP54
Response time	60ms
Timeout function	15s upto 3 non-adjacent channels
Power Indicator	Provided
Output indicator	Provided
Connection method	5meter wire with connector cable
Housing material	Aluminium

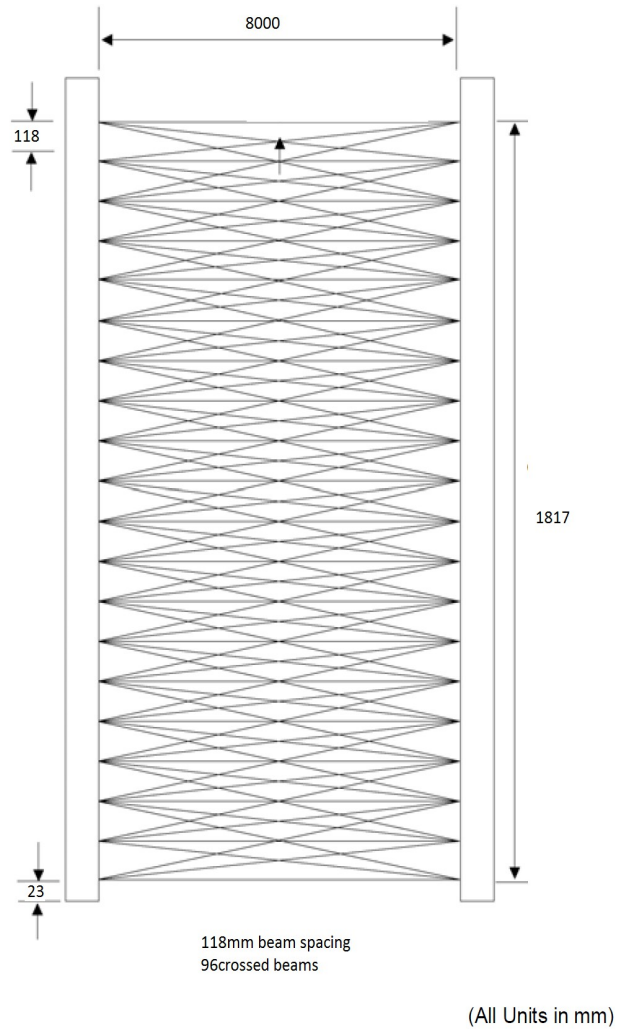
# IOS SERIES LIGHT CURTAIN



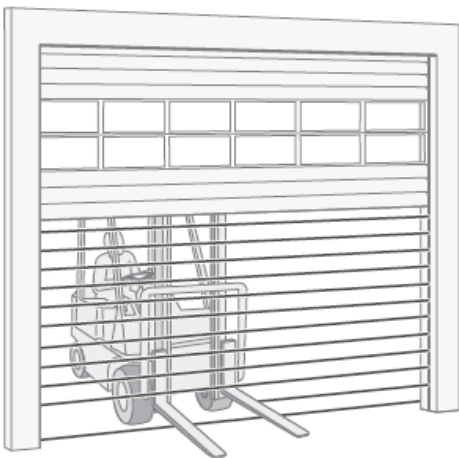
## Dimension:



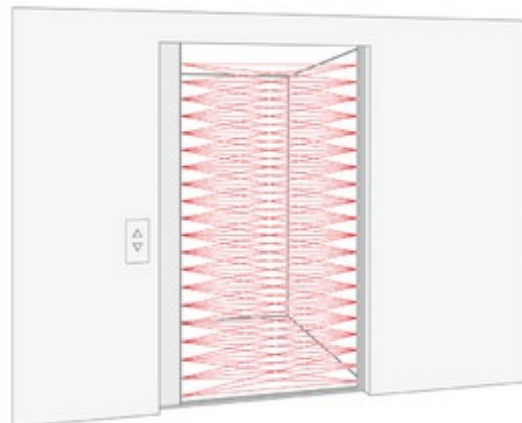
## Beam Pattern:



## Application:



**INDUSTRIAL DOOR**  
Vehicle and pedestrian detection



**Elevator Doors**  
Pedestrian presence detection