



H88 Series



Rotary Encoder

Application

- Elevator

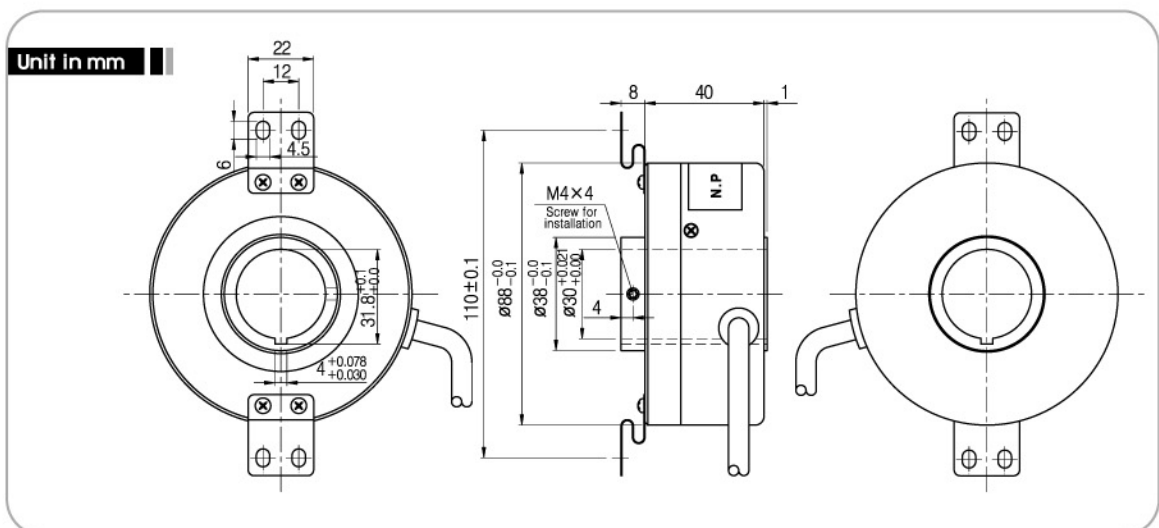
Features

- Rigid bearing
- High reliability
- Customized design available

Model

H	88	30A	1024	B	C
Hollow Shaft	Outer Diameter (φ88)	Shaft Size Ø30	Resolution (P/R) 512 1024	Output Signal • B : A, B • Z : A, B, Z • V : A, \bar{A} , B, \bar{B} , Z, \bar{Z}	Output Form • O : O pen collector • C : Complemental • L : L ine driver

External Dimension



ROTARY ENCODER



Specifications

Electrical Spec.			
Resolution	512,1024 P/R		
Output type	Output Form	Power Supply	Consuming Current
	Open Collector Complemental	DC +15V	150mA Max.
	Line Driver	DC +5V	200mA Max.
Maximum Response Frequency	100 kHz		
Cable Length	7m		

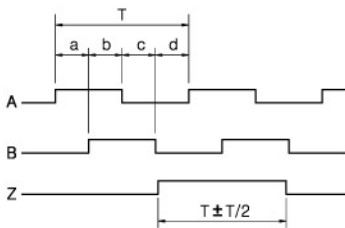
Mechanical Spec.	
Starting Torque	800g-cm Max.
Maximum number of revolution	3000 rpm
Allowable Shaft Load	Radial : 5.0kg Max. Axial : 2.5kg Max.
Operating Temp. Range	-10°C ~ +70°C
Internal Vibration	5G
Internal Shock	50G
Degree of Protection	IP50

Output Phase Shift

Open Collector, Totem Pole, Complemental

$$a + b, c + d = T/2 \pm T/10$$

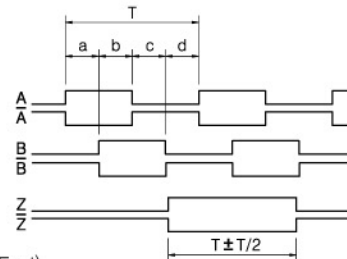
$$a, b, c, d = T/4 \pm T/10$$



Line Driver

$$a + b, c + d = T/2 \pm T/10$$

$$a, b, c, d = T/4 \pm T/10$$

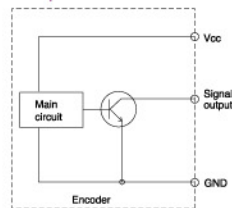


Connection Table

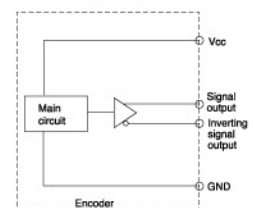
Cable's Color	Connection Table	
	Open Collector Complemental	Line Driver
Red	DC +15V	DC +5V
Black	Ground	Ground
Green	A	A
Orange	Sig. Ground	\bar{Z}
Yellow	B	Z
White	Sig. Ground	B
Blue	-	\bar{A}
Pink	-	\bar{B}
Shield	Case Shield	

Output Circuit

Open collector



Line driver



Complemental

