



## H88 Series



Rotary Encoder

### Application

- Industrial application
- Elevator

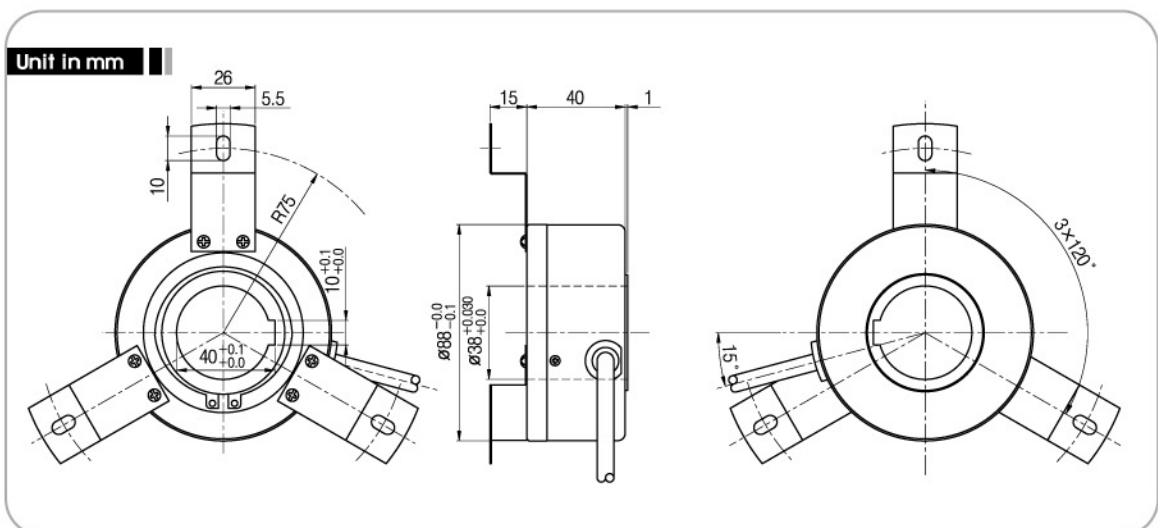
### Features

- High reliability
- Strengthened anti-Noise characteristic
- Customized design available

### Model

<b>H</b>	<b>88</b>	<b>38</b>	<b>1024</b>	<b>B</b>	<b>C</b>
Hollow Shaft	Outer Diameter (ø88)	Shaft Size ø38	Resolution (P/R) 0512 1024	Output Signal • B : A, B • Z : A, B, Z • V : A, $\bar{A}$ , B, $\bar{B}$ , Z, $\bar{Z}$	Output Form • C : Complemental • L : Line driver

### External Dimension





## Specifications

Electrical Spec.			
Resolution	512,1024 P/R		
Output type	Output Form	Power Supply	Consuming Current
	Complemental	DC +15V	150mA Max.
	Line Driver	DC +5V	200mA Max.
Maximum Response Frequency	100 kHz		
Cable Length	1m		

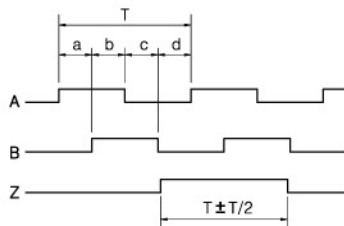
Mechanical Spec.	
Starting Torque	800g-cm Max.
Maximum number of revolution	3000 rpm
Allowable Shaft Load	Radial : 5.8kg Max. Axial : 1.9kg Max.
Operating Temp. Range	-10°C ~ +70°C
Internal Vibration	5G
Internal Shock	100G
Degree of Protection	IP50

## Output Phase Shift

### Complemental

$$a + b, c + d = T/2 \pm T/10$$

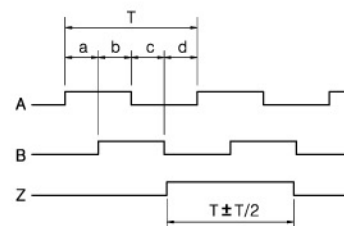
$$a, b, c, d = T/4 \pm T/10$$



### Line Driver

$$a + b, c + d = T/2 \pm T/10$$

$$a, b, c, d = T/4 \pm T/10$$

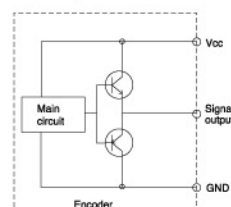


## Connection Table

Cable's Color	Connection Table	
	Complemental	Line Driver
Red	DC +15V	DC +5V
Black	Ground	Ground
Green	A	A
Orange	Sig. Ground	$\bar{Z}$
Yellow	B	Z
White	Sig. Ground	B
Blue	-	$\bar{A}$
Pink	-	$\bar{B}$
Shield	Case Shield	

## Output Circuit

### Complemental



### Line driver

