



**VT300 Inline Homogenizer** -- Designed as a high speed, high shear mixer and emulsifier for continuous processing, the VT-300 sets the standard for what in-line mechanical mixers should provide. VT-300 doesn't simply mix. It **emulsifies, homogenizes, dissolving molecular/colloidal, suspends, disperses and disintegrates solids and powder/liquid incorporation.** Each mixer, with its precision engineered rotor/stator generator (1-4 stages), far outperforms conventional mixers, improving quality, product consistency and process efficiency. It is constructed completely of 316SS (internals, housing, shafting and base), its unique dual stage axial and radial heads provide greater throughput and flow, and the shear rates generated insure droplet and **particle size reduction down to 3-5 microns**

**Features & Specification**

Working flowrate (l/h)	30,000 – 185,000 (300 series) 3,000 – 125,000 (310 series)	Operating Environment	0-175°C, 95% rel. humidity
Motor Power(kW)	1.1 -37 - 3 phase Normal or Ex-Proof	Protection class	IP55 (normal motor) EExdeIICT4 with thermistor (Explosion proof motor)
Voltage/ Frequency	380-450V / 50-60Hz	Certified standards	89/336EEC, 72/023/EEC, EMC acc. IEC/EN 61000-6-2 / 3, Safety acc. IEC/EN 61010-2-51, 2006/95/CE, 2004/108/CE, EN 60034-1, EN60204-1
Working Temperature and Pressure Range	Up to 175° C 15 bar	Seal type	Single Seal (150° C) or Double Acting Mechanical Seal (160° C and 15 bar)
Speed range (rpm)	1,000 – 3,000 (300 series) - 8,000 (310 series)	Warranty	2 years – spare part due to manufacturing defects
Speed control type	110-220V/50-60Hz or 380-415V/60Hz frequency inverter control : 0-6000 rpm	Sterilization Method:	All
Carriage system (optional)	S/S 304 or Mild Steel epoxy coated	pH Range:	2-13
Standard Shaft Length (mm)	750 - 1650	Suitable for solvents & abrasive substances::	YES
Weight (kg)	60-650	Ultimate Fineness, Suspensions&Emulsion: (µm) Max Viscosity (mPa)	Suspension: 10-15 Emulsion : 3-5 80,000



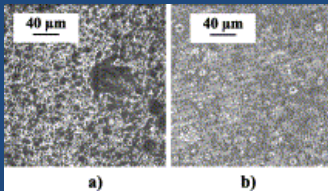
**OUR ADVANTAGES !!**

- ✓ **Cost Saving and higher yields by reduce batch time ,improve product Quality & consistency with High Efficiency, High Shear continuous Mixing**
- ✓ **Low Maintenance-No Bushings, Shims or Wear Sleeves**
- ✓ **CIP-able and designed for rapid disassembly for cleaning or inspection**
- ✓ **Safe Operation on Floor Level**
- ✓ **Average Droplets of 3-5 Microns...with 98% Distribution Under 5 Microns**
- ✓ **Fully Machined 316SS Housing and S/S Motor ( on request)**

**Why purchase our homogenizer ?**

**\*Excellent Result For Ultimate Fitness**

- ✓ Elimination of "Fish Eyes"& "bubbles" within minutes



Before our inline mixer      After our inline mixer

Achievable Suspension fitness(um):10-15,  
Achievable Emulsion fitness (um) : 3-5

**\*Competitive advantages in Versatile Functional Design**

High Throughputs from 3,000 up to approx.125'000 l/h.

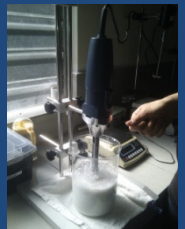
- ✓ High speed levels and tip speeds up to approx.43 m/s
- ✓ Hygienic and non-seal contacts with product that meets Pharmaceuticals production guidelines!



- ✓ Sterile versions, as well as CIP / SIP, 3A and ATEX(Ex-Proof) versions can be supplied
- ✓ product wetted parts made from high alloyed stainless steel and sealing materials conform with the products.

**\*Unlimited Customer Support**

"Pre-Order Questionnaire" & "Let's trial Run" programme if you suspect the correct equipment to purchase? Let's you help us by fill in the questionnaire or you can ship us the samples for trial run ! It's totally "FREE"



Dial our hotline (tol free for North America, Canada & Putrea Rico) or local line for 7/24 hrs products enquiry online technical support, after sales services and warranty spare parts replacement.



Please contact us for more info and quote :

