



Brief Description- The WT 130 is a rotor/stator type hand held tissue homogenizer which can rapidly dispersing, homogenizing, extractions, cell disruption, mixing, emulsifying, suspending samples in 0.1 - 50 ml of liquid or 1-250ml depending on the dispersing shaft. During operation, the suspended material is drawn into the core of the homogenizer by a rotor turning at up to 30,000 rpm. The material is repeatedly cycled through narrow slits in the stator where it is rapidly sheared and disintegrated by high shear mechanical action. Complete homogenization of tissues (muscle, liver, breast tissue, etc.) is usually achieved in a few seconds. Little, if any, heat is produced during the process



Features & Specifications

Working Volume (ml)	0.1 - 1,000 ml	Operating Environment	0-40°C, 95% rel. humidity
Motor type	Universal motor, 130 Watt	Protection class	IP20
/ Frequency	110-120V/60Hz, 220-240V / 50-60 Hz	Certified standards	89/336EEC, 72/023/EEC, EMC acc. IEC/EN 61000-6-2 / 3, Safety acc. IEC/EN 61010-2-51
Electrical Plug Type	UK Plug, US Plug, European Plug, China CCC Plug	Container Type	0.5ml Eppendorf tubes 50ml tubes, 100ml tubes, 250ml tubes, 1,000ml beaker
Speed range (rpm)	8,000 - 30,000	Warranty	2 years – spare part due to manufacturing defects
Speed control type	Dial knob 6 stage	Sterilization Method:	All
noise emission (drive only)	< 54 dB(A) at 30,000 rpm	pH Range:	2-13
Dimension LxWxH / (mm)	250 x 250 x 400	Suitable for solvents & abrasive substances::	YES
Weight (kg)	0.6 kg (without stand) 1.6 kg (with stand)	Ultimate Fineness, Suspensions & Emulsion: (µm)	Suspension: 10-15 Emulsion : 1-10

***Unlimited Customer Support**
 "Pre-Order Questionnaire" & "Let's trial Run" programme if you suspect the correct equipment to purchase? Let's you help us by fill in the questionnaire or you can ship us the samples for trial run ! It's totally "FREE"
 Dial our tol free number for 7/24 hrs products enquiry online technical support, after sales services and warranty spare parts replacement



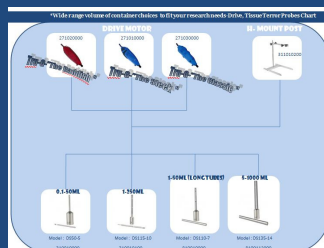
*** Custom design of shaft set accustom to application and function**

- custom design and fabrication of shaft set as customer requirement. Example: disposable plastic shaft set (PE or polycarbonate) or SS316L stainless steel to avoid cross contamination.



*** Wide Range of application & Treatable Volume Container**

- 0.1-1000 ml treatable samples volume from wide range of shaft set to choice as the tissue terror and cell breaker.



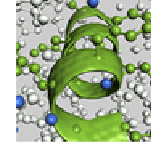
Please contact us for more info and quote :



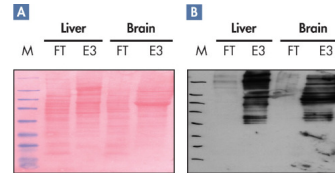


Field Application and Proven Result

- ✓ High effective in **genotyping, expression and proteomics** applications at demand to ensure high yields of DNA, RNA and protein.

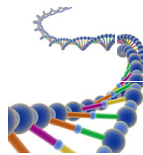


- ✓ **Proven result** => Successful purification of phosphoproteins from animal liver & brain after homogenized by purified by purify kit. The purified detected by western elution fraction 3.



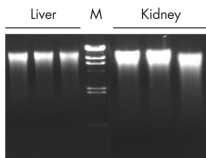
tissue tearor and phosphoproteins phosphoproteins blotting in E3

- ✓ Shearing at full speed for as little as 30 seconds is usually sufficient to release nucleic acids or proteins starting

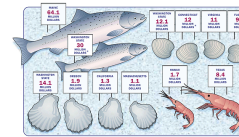


from

material(human or animal cell,plant tissue) allows reproducible purification of high-quality DNA and RNA using nucleic acid purification kits



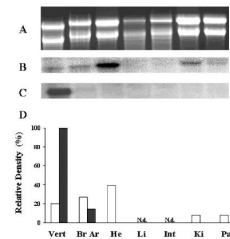
<= Proven result : Genomic DNA was purified after analysed by agarose gel electrophoresis after the liver & kidney samples been homogenized the tissue tearor.



- ✓ Successfully assist in **marine aquaculture** industries for high yields of extraction

of DNA, RNA and protein from bony tissues(vertebra,jaw) and branchial arches .

Proven result => Tissue distribution of ArMGP and ArBGP from total RNA extracted from several *A. regius*



tissues (vertebra, Vert; branchial arches, Br Ar; liver, Li; heart, He; intestine, Int; kidney, Ki; Pancreas, Panc) was fractionated on a 1.4% formaldehyde-agarose gel after 50sec homogenized by the tissue tearor

WT130 Homogenizer-Ordering Information



Model	Description	Power Supply	Order No.	Model	Description	Order No.	Description	Order No.
WT130-DR	Drive WT130	220-240VAC/50-60Hz .Euro Plug	271010000	WT130-AC	Shaft Set for Replacement			
		220-240VAC/50-60Hz .CN Plug	271010100		Shaft set 5x50L (flat bottom) 0.1-50ml	310010000	Shaft Set 7x130L (Saw Tooth) 1-50ml long tubes	810011000
		220-240VAC/50-60Hz .UK Plug	271010200		Shaft set 10x115L (flat bottom) 1-250ml	310010100	Shaft Set 14x135L (Saw Tooth) 100-1000ml	8100112100
		110-120VAC/60Hz, US Plug	271010300		Shaft Set 5x50L (Saw Tooth) 0.1-50ml	310011000	Shaft Set 10x115L (Saw Tooth)1-250ml	310011100
					Other Accessories			
					Stand	311010200	10mm Teflon bush	311010500
					5mm Teflon bush	311010300	14mm Teflon bush	311010600
					7mm Teflon bush	311010400	Collette	311010700

Please contact us for more info and quote :

