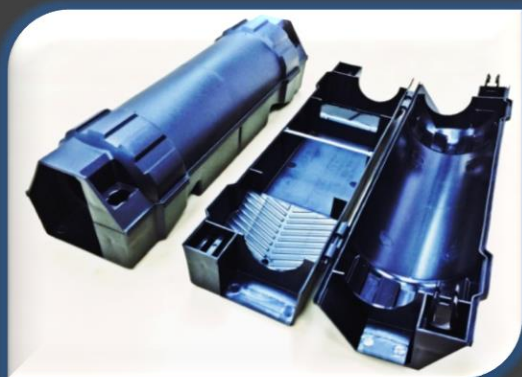




**TRBS XW**

Material : Polypropylene  
 Dimension : 240mm L x 215mm W x 97mm H  
 Weight : 560gm  
 Color : Black  
 Packing : 30pcs/carton



**TRBS X1**

Material : Polypropylene  
 Dimension : 370mm L x 96mm W x 96mm H  
 Weight : 287gm  
 Color : Black  
 Packing : 38pcs/carton

- **Protect bait** from moisture and dust, making the bait more acceptable to the target animal.
- **Provide a protected place for rodents to feed**, allowing them to feel more secure.
- **Tamper-Resistant for Kids & Dogs:** The station can only be accessed once it has been opened with the key. The baffles keep bait and traps out of reach of children and non-target animals for peace of mind.
- **Help prevent the accidental spilling out the bait.**
- **Easy-to-use.** Opens to the side for fast, convenient servicing, even when the station is secured.
- **Economical and environmental friendly user.**

# Tamper Resistant Rat Bait Station

TRBS-EW & TRBS-E 1 are made in high grade polypropylene with anti UV agent, it's durable and can be installed under the sunlight without compromise it quality within a year. Both models are designed for safe and secure purpose, so they can be fixed on the certain location which can't be moved away and locked for non target animals. The direction of open the TRBS's cover is more convenient for check and refill the rodent bait. To allow PCO adopt integrated pest management way to control rodent problems, the unit can be fill in bait, glue board and trapper as well. The holes inside the station are made sure if water get inside to the station when floor washing or to water the plant, water will be flow out from the station. It will prevent the humidity inside the station too high, it could be damage the rodent bait.

| FEATURE                        | TRBS XW | TRBS X1 |
|--------------------------------|---------|---------|
| Opposite wall direction cover. | √       | √       |
| Securable bait hanger.         | √       | √       |
| Pallet bait container.         | √       | √       |
| Liquid bait container.         | √       | NO      |
| Glue board available.          | √       | NO      |
| Glue tray available.           | √       | √       |
| Wall bracket.                  | √       | √       |
| T-Rex trapper available.       | √       | NO      |



**XWAY SDN BHD** 200901034838 (877953-U)  
 NO. 31, JALAN 9/118B, DESA TUN RAZAK, 56000 KUALA LUMPUR.  
 Tel: +603 9174 7468/7436 H/p: +6017 205 6627 Fax: +603 9174 6556  
 Email: [sales@xway.com.my](mailto:sales@xway.com.my) Website: [www.xway.com.my](http://www.xway.com.my)