

ENZO
CLASSIC

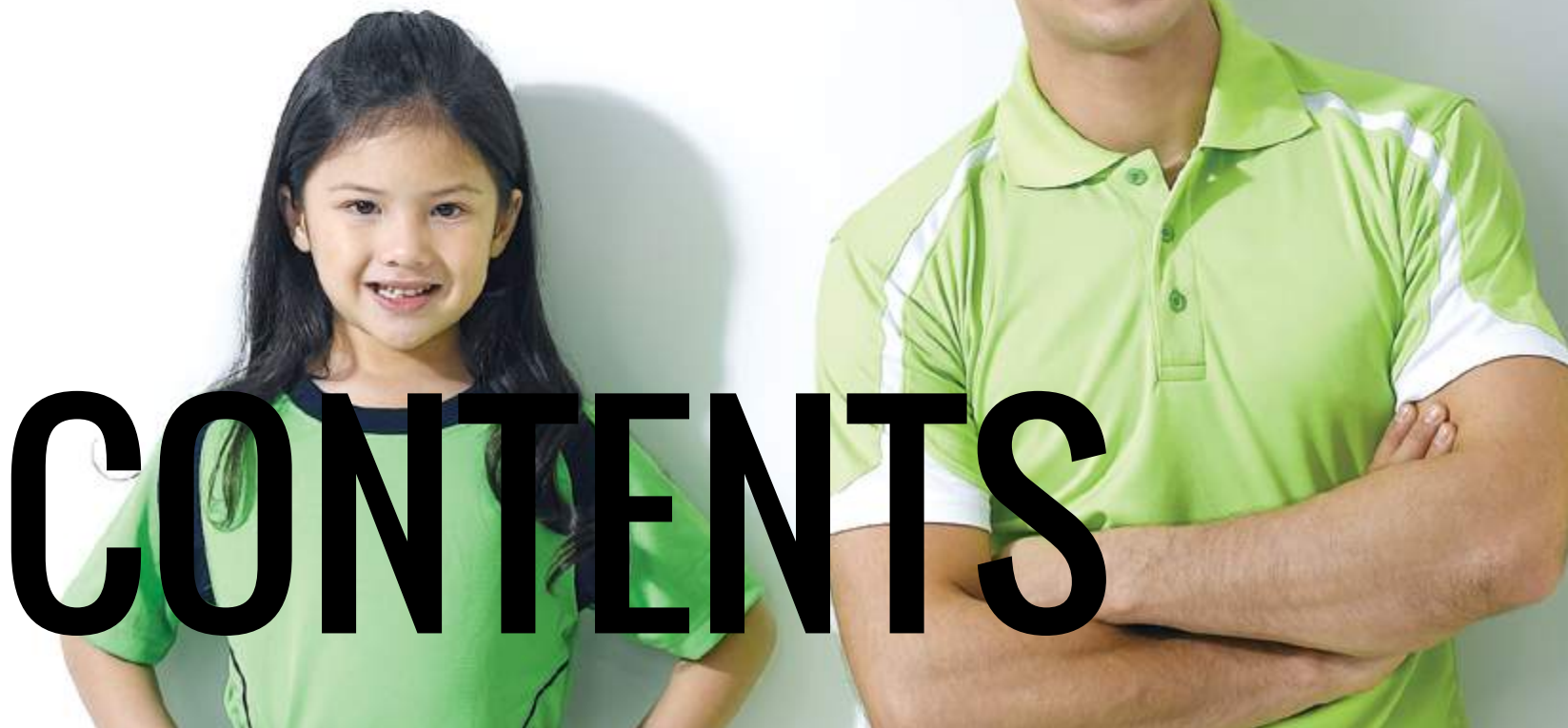
PRODUCT CATALOGUE VOL. 06 (2015)



| | |
|-----------|---|
| 01 | INTRODUCTION |
| 03 | T/C SINGLE KNIT |
| 05 | 4000 CHILDREN PLAIN ROUND NECK (30 T/C SINGLE KNIT) |
| 06 | 1000 PLAIN ROUND NECK (26 T/C SINGLE KNIT) |
| 07 | 3000 PLAIN ROUND NECK (30 T/C SINGLE KNIT) |
| 08 | 1200N LONG SLEEVE PLAIN ROUND NECK (26 T/C) |
| | 2200 LONG SLEEVE PLAIN POLO (26 T/C) |
| 09 | 1300 DOUBLE LONG SLEEVE ROUND NECK (26 T/C) |
| | 2046 PLAIN POLO TEE (30 T/C) |
| 10 | 2300 DOUBLE LONG SLEEVE POLO (26 T/C) |
| 11 | 1012 CUT & SEW ROUND NECK (30 T/C SINGLE KNIT) |
| 12 | 2125 POLO WITH PIPING (26 T/C SINGLE KNIT) |
| 13 | 1028 RAGLAN S & L SLEEVE ROUND NECK (30 T/C SINGLE KNIT) |
| 17 | 1066 CUT & SEW ROUND NECK (30 T/C SINGLE KNIT) |
| 18 | 2000 PLAIN POLO (26 T/C SINGLE KNIT) |
| 19 | 2816 CUT & SEW POLO (26 T/C SINGLE KNIT) |
| 21 | 1038 CUT & SEW V NECK (30 T/C SINGLE KNIT) |
| 22 | 2520 POLO WITH PIPING (26 T/C SINGLE KNIT) |
| 23 | 2093 SHORT / LONG SLEEVE POLO (26 T/C SINGLE KNIT) |
| 25 | 1709 CUT & SEW ROUND NECK (30 T/C SINGLE KNIT) |
| 26 | 2085 CUT & SEW POLO (26 T/C SINGLE KNIT) |

| | |
|-----------|---|
| 27 | 2668 FRENCH TERRY PIPPING POLO (QUICK DRY TC) |
| 28 | 2828 FRENCH TERRY WITH COLOR MATCHING COLLAR (QUICK DRY TC) |
| 29 | 2075 CUT & SEW POLO (26 T/C SINGLE KNIT) |
| 31 | LACOSTE POLO |
| 33 | 2160 LACOSTE STANDARD POLO |
| 34 | 2183 LACOSTE MINI POLO |
| 35 | 2572 LACOSTE CUT & SEW POLO |
| 37 | PK FABRIC |
| 39 | 2101 PK PLAIN POLO (26 T/C PK) |
| | 2100 PK PLAIN POLO (26 T/C PK) |
| 40 | 2678 CUT & SEW POLO (26 T/C PK) |
| | 2141 POLO WITH PIPING (26 T/C PK) |
| 41 | 2588 CUT & SEW POLO (26 T/C PK) |
| 42 | 2111 SHORT/LONG SLEEVE POLO (26 T/C PK) |

CONTENTS



- 43 2521 SHORT/LONG SLEEVE POLO WITH PIPING (30 T/C PK)
- 45 2121 SHORT/LONG SLEEVE POLO (26 T/C PK)
- 46 2079 POLO WITH TIPPING & PIPING (26 T/C PK)
- 47 2135 POLO WITH PIPING ON SHOULDER (30 T/C PK)
- 48 2088 CUT & SEW POLO (26 T/C PK)
- 49 MICROFIBER QUICK-DRY**
- 51 MICROFIBER-MATERIAL
- 53 2260 SIMPLE POLO (MICROFIBER LACOSTE)
- 54 2283 SIMPLE MINI POLO (MICROFIBER LACOSTE)
- 55 1796N CUT & SEW V NECK (M.F. INTERLOCK)
- 57 1815 MICROFIBER PLAIN ROUND NECK (M.F. KM286)
- 59 1018 CUT & SEW ROUND NECK (M.F. 4090)
- 2068 MICROFIBER ZIP MOCK NECK (M.F. 4090)
- 60 2574 MICROFIBER POLO (MICROFIBER INTERLOCK)**
- 2646 MICROFIBER PLAIN POLO (MICROFIBER INTERLOCK)**
- 61 1804 S & L SLEEVE CUT & SEW ROUND NECK (M.F. STRIPE DRILL)**
- 63 2010 CUT & SEW POLO (M.F. OTTOMAN)
- 64 2055 CUT & SEW POLO (M.F. 3098)
- 65 2714 CUT & SEW POLO (M.F. FLAT KNITTED)

- 67 2522 CUT & SEW POLO WITH PIPING (M.F. MINI WAFFLE)
- 68 2050 CUT & SEW POLO (M.F. 4090)
- 69 2069N CUT & SEW POLO (M.F. 0866)
- 71 2724 UNBALANCE CUT & SEW POLO (M.F. STRIPE DRILL)
- 73 2830 CUT & SEW ZIP MOCK NECK (M.F. STRIP DRILL)
- 75 2802 CUT & SEW MANDARIN COLLAR TEE WITH ZIP (M.F. 4090)
- 77 2708 CUT & SEW POLO WITH PIPING (MINI EYELET)
- 78 1708 ADULT & CHILDREN CUT & SEW ROUND NECK WITH PIPING (MINI EYELET)
- 79 MUSLIMAH**
- 87 ENZO CLASSIC**
- 2545 POLO WITH PIPING (45 T/C INTERLOCK)
- 89 1818 PLAIN ROUND NECK (QUICK DRY COTTON)
- 91 2573 CUT & SEW POLO (45 T/C INTERLOCK)
- 93 2073 CUT & SEW POLO (45 T/C INTERLOCK)
- 94 40 FULLY COMB COTTON FOR CUSTOM MADE ONLY
- 95 SOCCER SHORT OFFICE JACKET REVERSIBLE WINDBREAKER CAPS**
- 97 CAPS**
- 99 PRODUCTS DETAIL**
- 100 MEASUREMENTS**







ENZO

WE FEEL PROUD TO SAY “WE ARE MADE IN MALAYSIA”

As one of the major garment traders and manufacturer across the industry, we have more than 20 years experience in garment producing. With a team of experienced workers, Enzo also pursue the modernize manufacturing facility and equipment to ensure product quality and delivery reliability. We know what is needed to rough out in challenging the customers' ever changing need.

Even be in such a depressive market, we insist to produce all the apparel 100% locally in our own factory. This allow us to gain competitive advantage in quality control over knitting, dyeing, silkscreen printing, embroidery and sewing of the garment. Meanwhile, our specialists continuously communicate and work together with our textile supplier in order to develop new kind of textile and to improve the hand feel of fabric for more comfortable apparel.

We keep large quantity of ready made products for customer's urgent need at all reasonable price.

T/C

T/C SINGLE KNITTED FABRIC POLYESTER 65% + COTTON 35%

Modern TC fabric is a very popular material with its reasonable quality in used for usual work wear, uniform and corporate apparel. Good quality of the dye stuff allows us to achieve

high grade of color-fastness and low shrinkage rate. With its polyester based characteristic, TC fabric is more durable compare to other fabric while maintain its low price.





4000 CHILDREN PLAIN ROUND NECK (30 T/C SINGLE KNIT)

SIZES | 28 / 30 / 32 / 34 / 36



CODE | 4000
COLOR | YELLOW



CODE | 4000
COLOR | ORANGE



CODE | 4000
COLOR | RED



CODE | 4000
COLOR | L.GREEN



CODE | 4000
COLOR | WHITE



CODE | 4000
COLOR | CHARCOAL
GREY



CODE | 4000
COLOR | BLACK



CODE | 4000
COLOR | DK.PURPLE



CODE | 4000
COLOR | HOT PINK



CODE | 4000
COLOR | GREEN



CODE | 4000
COLOR | ROYAL BLUE



CODE | 4000
COLOR | NAVY

1000 PLAIN ROUND NECK (26 T/C SINGLE KNIT)

SIZES | S/M/L/XL/2XL/3XL



CODE | 1000
COLOR | WHITE



CODE | 1000
COLOR | ORANGE



CODE | 1000
COLOR | RED



CODE | 1000
COLOR | ROYAL BLUE



CODE | 1000
COLOR | NAVY



CODE | 1000
COLOR | BLACK

3000 PLAIN ROUND NECK (30 T/C SINGLE KNIT)

SIZES | S/M/L/XL/2XL/3XL



CODE | 3000
COLOR | YELLOW



CODE | 3000
COLOR | ORANGE



CODE | 3000
COLOR | RED



CODE | 3000
COLOR | MAROON



CODE | 3000
COLOR | HOT PINK



CODE | 3000
COLOR | LGREEN



CODE | 3000
COLOR | ROYAL BLUE



CODE | 3000
COLOR | DK.PURPLE



CODE | 3000
COLOR | NAVY



CODE | 3000
COLOR | BLACK

1200N LONG SLEEVE PLAIN ROUND NECK (26 T/C)

SIZES | S/M/L/XL/2XL/3XL



CODE | 1200N
COLOR | YELLOW



CODE | 1200N
COLOR | NAVY



CODE | 1200N
COLOR | RED



CODE | 1200N
COLOR | BLACK

2200 LONG SLEEVE PLAIN POLO (26 T/C)

SIZES | S/M/L/XL/2XL/3XL



CODE | 2200
COLOR | MAROON



CODE | 2200
COLOR | NAVY



CODE | 2200
COLOR | BLACK

1300 DOUBLE LONG SLEEVE ROUND NECK (26 T/C)

SIZES | S/M/L/XL/2XL/3XL



CODE | 1300
COLOR | RED / BLACK



CODE | 1300
COLOR | ORANGE / BLACK



CODE | 1300
COLOR | L.GREEN / BLACK

2046 PLAIN POLO TEE (30 T/C)

SIZES | S/M/L/XL/2XL/3XL



CODE | 2046
COLOR | BLACK



CODE | 1300
COLOR | NAVY / RED

2300 DOUBLE LONG SLEEVE POLO (26 T/C)

SIZES | S/M/L/XL/2XL/3XL



CODE | 2300
COLOR | ORANGE / BLACK



CODE | 2300
COLOR | RED / BLACK



CODE | 2300
COLOR | LGREEN / BLACK



CODE | 2300
COLOR | NAVY / RED



CODE | 2300
COLOR | BLACK / LGREEN

1012 CUT & SEW ROUND NECK (30 T/C SINGLE KNIT)

CHILDREN SIZES | 28 / 30 / 32 / 34 / 36 ADULT SIZES | S / M / L / XL / 2XL / 3XL



CODE | 1012
COLOR | TURQ / WHITE

CODE | 1012
COLOR | WHITE / ROYAL BLUE



CODE | 1012
COLOR | LGREEN / BLACK

CODE | 1012
COLOR | YELLOW / NAVY



CODE | 1012
COLOR | NAVY / RED

CODE | 1012
COLOR | RED / NAVY



CODE | 1012
COLOR | BLACK / ORANGE

CODE | 1012
COLOR | ORANGE / BLACK

2125 POLO WITH PIPING (26 T/C SINGLE KNIT)

SIZES | S/M/L/XL/2XL/3XL



CODE | 2125
COLOR | MARIGOLD / BLACK



CODE | 2125
COLOR | L.GREEN / BLACK



CODE | 2125
COLOR | NAVY / RED



CODE | 2125
COLOR | MAROON / NAVY

1028 RAGLAN S & L SLEEVE ROUND NECK (30 T/C SINGLE KNIT)

CHILDREN SIZES | 28 / 30 / 32 / 34 / 36 ADULT SIZES | S / M / L / XL / 2XL / 3XL



CODE | 1028
COLOR | CHARCOAL GREY /
BLACK



CODE | 1028 L
COLOR | CHARCOAL GREY /
BLACK





1028 RAGLAN S & L SLEEVE ROUND NECK (30 T/C SINGLE KNIT)

CHILDREN SIZES | 28 / 30 / 32 / 34 / 36 ADULT SIZES | S / M / L / XL / 2XL / 3XL



CODE | 1028
COLOR | WHITE / HOT PINK



CODE | 1028
COLOR | YELLOW / BLACK



CODE | 1028
COLOR | RED / BLACK



CODE | 1028 L
COLOR | WHITE / HOT PINK



CODE | 1028 L
COLOR | YELLOW / BLACK



CODE | 1028 L
COLOR | RED / BLACK



CODE | 1028
COLOR | L.GREEN / NAVY



CODE | 1028
COLOR | TURQ / NAVY



CODE | 1028
COLOR | DK.PURPLE / MELANGE



CODE | 1028 L
COLOR | L.GREEN / NAVY



CODE | 1028 L
COLOR | TURQ / NAVY



CODE | 1028 L
COLOR | DK.PURPLE / MELANGE

1066 CUT & SEW ROUND NECK (30 T/C SINGLE KNIT)

SIZES | XS/S/M/L/XL/2XL/3XL



CODE | 1066
COLOR | YELLOW / BLACK



CODE | 1066
COLOR | ORANGE / WHITE



CODE | 1066
COLOR | RED / BLACK



CODE | 1066
COLOR | FUCHSIA / WHITE



CODE | 1066
COLOR | L.GREEN / BLACK



CODE | 1066
COLOR | TURQ / WHITE



CODE | 1066
COLOR | BLACK / ORANGE

2000 PLAIN POLO (26 T/C SINGLE KNIT)

SIZES | S/M/L/XL/2XL/3XL



CODE | 2000
COLOR | NAVY / ORANGE



CODE | 2000
COLOR | ORANGE / BLACK



CODE | 2000
COLOR | ROYAL BLUE / BLACK



CODE | 2000
COLOR | R.MAROON / BLACK

2816 CUT & SEW POLO (26 T/C SINGLE KNIT)

SIZES | XS/S/M/L/XL/2XL/3XL



CODE | 2816
COLOR | BLACK / WHITE / RED



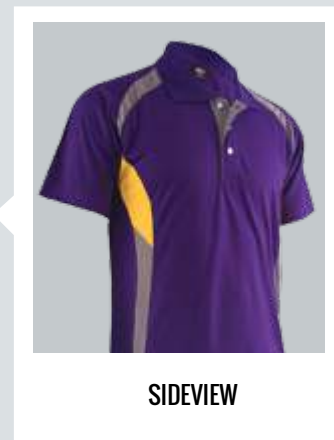
CODE | 2816
COLOR | RED / WHITE / BLACK



CODE | 2816
COLOR | FUCHSIA / GREY / NAVY



CODE | 2816
COLOR | D.PURPLE / GREY /
YELLOW



SIDEVIEW



1038 CUT & SEW V NECK (30 T/C SINGLE KNIT)

SIZES | S/M/L/XL/2XL/3XL



CODE | 1038
COLOR | WHITE / ROYAL BLUE



CODE | 1038
COLOR | YELLOW / BLACK



CODE | 1038
COLOR | ORANGE / BLACK



CODE | 1038
COLOR | RED / NAVY



CODE | 1038
COLOR | LGREEN / BLACK



CODE | 1038
COLOR | TURQ / WHITE



CODE | 1038
COLOR | BLACK / ORANGE



CODE | 1038
COLOR | NAVY / RED

2520 POLO WITH PIPING (26 T/C SINGLE KNIT)

SIZES | S/M/L/XL/2XL/3XL



CODE | 2520
COLOR | BEIGE / MAROON



CODE | 2520
COLOR | LGREEN / NAVY



CODE | 2520
COLOR | FUCHSIA / NAVY



CODE | 2520
COLOR | NAVY / RED



CODE | 2093 S/SLEEVE
COLOR | MARIGOLD / BLACK

CODE | 2093 L/SLEEVE
COLOR | MARIGOLD / BLACK



CODE | 2093 S/SLEEVE
COLOR | C.BLUE / WHITE

CODE | 2093 L/SLEEVE
COLOR | C.BLUE / WHITE

2093 SHORT / LONG SLEEVE POLO (26 T/C SINGLE KNIT)

SIZES | S / M / L / XL / 2XL / 3XL



CODE | 2093 S/SLEEVE
COLOR | RED / WHITE

CODE | 2093 L/SLEEVE
COLOR | RED / WHITE



CODE | 2093 S/SLEEVE
COLOR | L.GREEN / WHITE

CODE | 2093 L/SLEEVE
COLOR | L.GREEN / WHITE

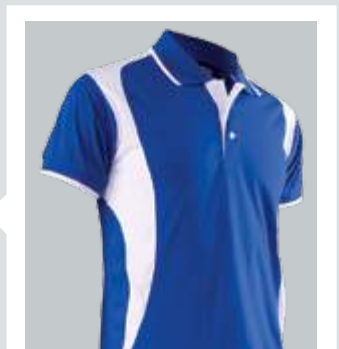


CODE | 2093 S/SLEEVE
COLOR | BLACK / ORANGE

CODE | 2093 L/SLEEVE
COLOR | BLACK / ORANGE



CODE | 2093 L/SLEEVE
COLOR | ROYAL BLUE / WHITE



SIDEVIEW

CODE | 2093 S/SLEEVE
COLOR | ROYAL BLUE / WHITE

1709 CUT & SEW ROUND NECK (30 T/C SINGLE KNIT)

SIZES | S/M/L/XL/2XL/3XL



CODE | 1709
COLOR | DK.TURQ / WHITE



CODE | 1709
COLOR | BLACK / YELLOW



CODE | 1709
COLOR | L.GREEN / BLACK



CODE | 1709
COLOR | RED / NAVY



CODE | 1709
COLOR | DK.PURPLE / BLACK

2085 CUT & SEW POLO (26 T/C SINGLE KNIT)

SIZES | S/M/L/XL/2XL/3XL



CODE | 2085
COLOR | C.BLUE / NAVY / WHITE



CODE | 2085
COLOR | MARIGOLD / BLACK /
WHITE



CODE | 2085
COLOR | BLACK / ORANGE / WHITE



CODE | 2085
COLOR | RED / NAVY / WHITE



CODE | 2085
COLOR | WHITE / NAVY / RED

2668 FRENCH TERRY PIPPING POLO (QUICK DRY COTTON)

SIZES | XS/S/M/L/XL/2XL/3XL



CODE | 2668
COLOR | RED



CODE | 2668
COLOR | TURQ



CODE | 2668
COLOR | NAVY



CODE | 2668
COLOR | BLACK

2828 FRENCH TERRY WITH COLOR MATCHING COLLAR (QUICK DRY COTTON)

SIZES | XS / S / M / L / XL / 2XL / 3XL



CODE | 2828
COLOR | WHITE / R. BLUE



CODE | 2828
COLOR | YELLOW / BLACK



CODE | 2828
COLOR | RED / GREY



CODE | 2828
COLOR | GREEN / NAVY



CODE | 2828
COLOR | R. BLUE / WHITE



2075 CUT & SEW POLO (26 T/C SINGLE KNIT)

SIZES | S/M/L/XL/2XL/3XL



CODE | 2075
COLOR | DK.TURQ / NAVY



CODE | 2075
COLOR | C.BLUE / WHITE



CODE | 2075
COLOR | DK.PURPLE / BEIGE



CODE | 2075
COLOR | BEIGE / NAVY



CODE | 2075
COLOR | NAVY / WHITE



CODE | 2075
COLOR | LGREEN / WHITE



CODE | 2075
COLOR | BLACK / ORANGE



CODE | 2075
COLOR | RED / NAVY

LACOSTE

T/C LACOSTE FABRIC
POLYESTER 65% + COTTON 35%

A kind of fashion fabric knitting style developed by “Lacoste” which is a French based company which uses a crocodile as their logo. It has an image similar to Honeycomb fabric while the surface provide a smoother sense. Widely used for tennis and casual wear.



2160 LACOSTE STANDARD POLO

SIZES | S/M/L/XL/2XL/3XL



CODE | 2160
COLOR | WHITE



CODE | 2160
COLOR | BEIGE



CODE | 2160
COLOR | PINK



CODE | 2160
COLOR | ORANGE



CODE | 2160
COLOR | RED



CODE | 2160
COLOR | FUCHSIA



CODE | 2160
COLOR | LGREEN



CODE | 2160
COLOR | TURQ



CODE | 2160
COLOR | DK.PURPLE



CODE | 2160
COLOR | NAVY



CODE | 2160
COLOR | BLACK

2183 LACOSTE MINI POLO

SIZES | S/M/L/XL/2XL/3XL



CODE | 2183
COLOR | WHITE

CODE | 2183
COLOR | BLACK



CODE | 2183
COLOR | PINK

CODE | 2183
COLOR | RED



CODE | 2183
COLOR | FUCHSIA

CODE | 2183
COLOR | DK.PURPLE



CODE | 2183
COLOR | L.GREEN

CODE | 2183
COLOR | TURQ



2572 LACOSTE CUT & SEW POLO

SIZES | XS / S / M / L / XL / 2XL / 3XL



CODE | 2572
COLOR | BLACK / WHITE / YELLOW



CODE | 2572
COLOR | RED / WHITE / NAVY



CODE | 2572
COLOR | FUCHSIA / WHITE / BLACK



CODE | 2572
COLOR | L.GREEN / WHITE / D.PURPLE



CODE | 2572
COLOR | NAVY / WHITE / TURQ

PK

T/C PK FABRIC (HONEYCOMB) POLYESTER 65% + COTTON 35%

PK fabric is knitting in a way which makes it very absorbent. Compare to other kinds of fabric in same weight, honeycomb is relatively higher thickness with lower density due to its waffle like structure. Surface of honeycomb is textured rather like a waffle, and this waffle weave allow air to flow through so that it dries quick.





2101 PK PLAIN POLO (26 T/C PK)

SIZES | S/M/L/XL/2XL/3XL



CODE | 2101
COLOR | WHITE



CODE | 2101
COLOR | MELANGE GREY



CODE | 2101
COLOR | RED



CODE | 2101
COLOR | BLACK

2100 PK PLAIN POLO (26 T/C PK)

SIZES | S/M/L/XL/2XL/3XL



CODE | 2100
COLOR | RED / NAVY



CODE | 2100
COLOR | NAVY / RED



CODE | 2100
COLOR | GOLDEN YELLOW / BLACK



CODE | 2100
COLOR | BLACK / ORANGE

2678 CUT & SEW POLO (26 T/C PK)

SIZES | XS/S/M/L/XL/2XL/3XL



CODE | 2678
COLOR | YELLOW / BLACK



CODE | 2678
COLOR | NAVY / RED



CODE | 2678
COLOR | BLACK / FUCHIA

2141 POLO WITH PIPING (26 T/C PK)

SIZES | S/M/L/XL/2XL/3XL



CODE | 2141
COLOR | ORANGE / BLACK



CODE | 2141
COLOR | ROYAL BLUE / WHITE



CODE | 2141
COLOR | BLACK / GOLDEN YELLOW



CODE | 2141
COLOR | RED / NAVY

2588 CUT & SEW POLO (26 T/C PK)

SIZES | XS/S/M/L/XL/2XL/3XL



CODE | 2588
COLOR | ORANGE / WHITE



CODE | 2588
COLOR | RED / BLACK



CODE | 2588
COLOR | DK.PURPLE / WHITE



CODE | 2588
COLOR | NAVY / TURQ

2111 SHORT/LONG SLEEVE POLO (26 T/C PK)

SIZES | S/M/L/XL/2XL/3XL



CODE | 2111 S/SLEEVE
COLOR | RED / NAVY

CODE | 2111 L/SLEEVE
COLOR | RED / NAVY



CODE | 2111 S/SLEEVE
COLOR | NAVY / RED

CODE | 2111 L/SLEEVE
COLOR | NAVY / RED



CODE | 2111 S/SLEEVE
COLOR | G.YELLOW / BLACK

CODE | 2111 L/SLEEVE
COLOR | G.YELLOW / BLACK



CODE | 2111 S/SLEEVE
COLOR | L.GREEN / NAVY

CODE | 2111 L/SLEEVE
COLOR | L.GREEN / NAVY

2521 SHORT/LONG SLEEVE POLO WITH PIPING (30 T/C PK)

SIZES | S/M/L/XL/2XL/3XL

CODE | 2521 L/SLEEVE
COLOR | ORANGE / BLACK



CODE | 2521 L/SLEEVE
COLOR | LGREEN / NAVY



CODE | 2521 L/SLEEVE
COLOR | BLACK / ORANGE



CODE | 2521 S/SLEEVE
COLOR | ORANGE / BLACK

CODE | 2521 S/SLEEVE
COLOR | LGREEN / NAVY



CODE | 2521 L/SLEEVE
COLOR | RED / NAVY

CODE | 2521 S/SLEEVE
COLOR | BLACK / ORANGE



CODE | 2521 L/SLEEVE
COLOR | ROYAL BLUE / WHITE

CODE | 2521 S/SLEEVE
COLOR | RED / NAVY

CODE | 2521 S/SLEEVE
COLOR | ROYAL BLUE / WHITE



2121 SHORT/LONG SLEEVE POLO (26 T/C PK)

SIZES | S/M/L/XL/2XL/3XL



CODE | 2121 S/SLEEVE
COLOR | TURQ / NAVY

CODE | 2121 L/SLEEVE
COLOR | TURQ / NAVY



CODE | 2121 S/SLEEVE
COLOR | NAVY / ORANGE

CODE | 2121 L/SLEEVE
COLOR | NAVY / ORANGE



CODE | 2121 S/SLEEVE
COLOR | RED / NAVY

CODE | 2121 L/SLEEVE
COLOR | RED / NAVY



CODE | 2121 S/SLEEVE
COLOR | BEIGE / NAVY

CODE | 2121 S/SLEEVE
COLOR | C.BLUE / WHITE

2079 POLO WITH TIPPING & PIPING (26 T/C PK)

SIZES | S/M/L/XL/2XL/3XL



CODE | 2079
COLOR | DK.BEIGE / ORANGE



CODE | 2079
COLOR | DK.BEIGE / R.MAROON



CODE | 2079
COLOR | DK.BEIGE / NAVY



CODE | 2079
COLOR | NAVY / L.GREEN

2135 POLO WITH PIPING ON SHOULDER (30 T/C PK)

SIZES | S/M/L/XL/2XL/3XL



CODE | 2135 S/SLEEVE
COLOR | MARIGOLD / BLACK

CODE | 2135 L/SLEEVE
COLOR | MARIGOLD / BLACK



CODE | 2135 S/SLEEVE
COLOR | RED / NAVY

CODE | 2135 L/SLEEVE
COLOR | RED / NAVY



CODE | 2135 S/SLEEVE
COLOR | KHAKI / NAVY

CODE | 2135 L/SLEEVE
COLOR | KHAKI / NAVY



CODE | 2135 S/SLEEVE
COLOR | NAVY / L.GREEN

CODE | 2135 L/SLEEVE
COLOR | NAVY / L.GREEN

2088 CUT & SEW POLO (26 T/C PK)

SIZES | S/M/L/XL/2XL/3XL



CODE | 2088
COLOR | GOLDEN YELLOW / BLACK



CODE | 2088
COLOR | RED / WHITE



CODE | 2088
COLOR | L.GREEN / BLACK



CODE | 2088
COLOR | BLACK / RED

MICROFIBER (QUICK DRY) MICROFIBER 100%

Well known as Dri-Fit or Quick Dry, microfiber is the synthetic fiber finer than silk which makes the fabric generally lightweight, resilient or resist wrinkling, soft and have a luxurious drape on body, retain shape, and also resist pilling. Its water absorbant and quick dry function makes it a very popular choice for sport wear material. Also, it is relatively strong and durable in relation to other fabrics of similar weight.



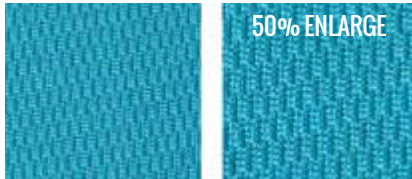
MICROFIBER



MICROFIBER MATERIAL



MICROFIBER 3098



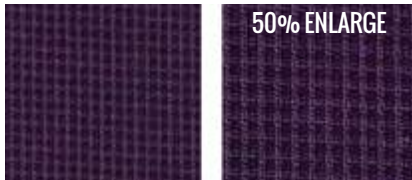
MICROFIBER 4090



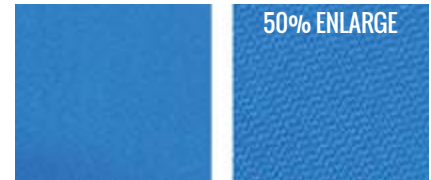
MICROFIBER LACOSTE



MICROFIBER OTTOMAN



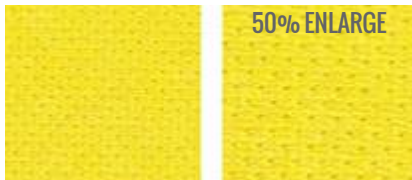
MICROFIBER MINI WAFFLE



MICROFIBER TWILL



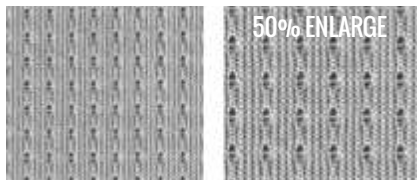
MICROFIBER MINI EYELET 0848



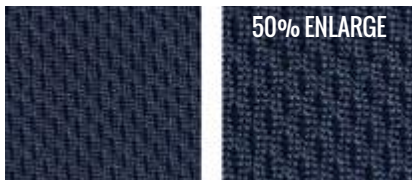
MICROFIBER 0866



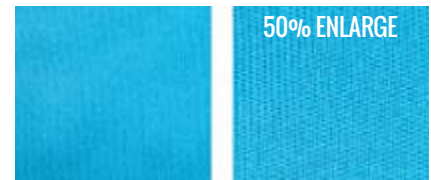
MICROFIBER FLAT KNITTED (KK 020)



MICROFIBER COOL BREEZE CUTE MESH 058



MICROFIBER KM286



MICROFIBER INTERLOCK



2260 SIMPLE POLO (MICROFIBER LACOSTE)

SIZES | XS/S/M/L/XL/2XL/3XL



CODE | 2260
COLOR | YELLOW / WHITE



CODE | 2260
COLOR | RUSTY / BLACK



CODE | 2260
COLOR | RED / WHITE



CODE | 2260
COLOR | FUCHSIA / BLACK



CODE | 2260
COLOR | LGREEN / WHITE



CODE | 2260
COLOR | CYAN / WHITE



CODE | 2260
COLOR | DK.PURPLE / LGREEN



CODE | 2260
COLOR | BLACK / RED

2283 SIMPLE MINI POLO (MICROFIBER LACOSTE)

SIZES | S / M / L / XL / 2XL / 3XL



CODE | 2283
COLOR | YELLOW / WHITE



CODE | 2283
COLOR | PARADISE PINK / WHITE



CODE | 2283
COLOR | FUCHSIA / BLACK



CODE | 2283
COLOR | RED / WHITE



CODE | 2283
COLOR | L.GREEN / WHITE



CODE | 2283
COLOR | CYAN / WHITE



CODE | 2283
COLOR | DK.PURPLE / L.GREEN



CODE | 2283
COLOR | BLACK / RED

1796N CUT & SEW V NECK (M.E INTERLOCK)

SIZES | XS/S/M/L/XL/2XL/3XL



CODE | 1796N
COLOR | ROYAL / LT. YELLOW



CODE | 1796N
COLOR | ORANGE / BLACK



CODE | 1796N
COLOR | GREY / NAVY



CODE | 1796N
COLOR | BLACK / FUCHSIA



CODE | 1796N
COLOR | RED / BLACK





1815 MICROFIBER PLAIN ROUND NECK (M.F. KM286)

SIZES | S/M/L/XL/2XL/3XL



CODE | 1815
COLOR | WHITE



CODE | 1815
COLOR | FLORESCENT YELLOW



CODE | 1815
COLOR | RED



CODE | 1815
COLOR | ROYAL BLUE



CODE | 1815
COLOR | NAVY



CODE | 1815
COLOR | BLACK

1018 CUT & SEW ROUND NECK (M.F. 4090)

SIZES | S/M/L/XL/2XL/3XL



CODE | 1018
COLOR | NAVY / RED



CODE | 1018
COLOR | WHITE / ORANGE



CODE | 1018
COLOR | RED / NAVY



CODE | 1018
COLOR | BLACK / ORANGE



CODE | 1018
COLOR | C.BLUE / WHITE

2068 MICROFIBER ZIP MOCK NECK (M.F. 4090)

SIZES | S/M/L/XL/2XL/3XL



CODE | 2068
COLOR | ORANGE / WHITE



CODE | 2068
COLOR | RED / WHITE



CODE | 2068
COLOR | C.BLUE / WHITE



CODE | 2068
COLOR | NAVY / WHITE



CODE | 2068
COLOR | BLACK / WHITE

2574 MICROFIBER POLO (MICROFIBER INTERLOCK)

SIZES | XS / S / M / L / XL / 2XL / 3XL



CODE | 2574
COLOR | ASH GREY / WHITE /
M. BLUE



CODE | 2574
COLOR | DK. PURPLE / WHITE /
NAVY



CODE | 2574
COLOR | NAVY / WHITE / RED

2646 MICROFIBER PLAIN POLO (MICROFIBER INTERLOCK)

SIZES | XS / S / M / L / XL / 2XL / 3XL



CODE | 2646
COLOR | RED



CODE | 2646
COLOR | BLACK

1804 S & L SLEEVE CUT & SEW ROUND NECK (M.F.TWILL)

SIZES | XS/S/M/L/XL/2XL/3XL



CODE | 1804 L
COLOR | DK.PURPLE / GREY /
WHITE



CODE | 1804
COLOR | DK.PURPLE / GREY /
WHITE



CODE | 1804 L
COLOR | MAGENTA / BLACK /
GREY



CODE | 1804
COLOR | MAGENTA / BLACK /
GREY



CODE | 1804 L
COLOR | BLACK / DK.TURQ /
WHITE



CODE | 1804
COLOR | BLACK / DK.TURQ /
WHITE



CODE | 1804 L
COLOR | NAVY / RED /
WHITE



CODE | 1804
COLOR | NAVY / RED /
WHITE



CODE | 1804 L
COLOR | YELLOW / BLACK /
WHITE



CODE | 1804
COLOR | YELLOW / BLACK /
WHITE



CODE | 1804 L
COLOR | L.GREEN / NAVY /
WHITE



CODE | 1804
COLOR | L.GREEN / NAVY /
WHITE



2010 CUT & SEW POLO (M.F. OTTOMAN)

SIZES | S/M/L/XL/2XL/3XL



CODE | 2010
COLOR | YELLOW / BLACK



CODE | 2010
COLOR | RED / NAVY



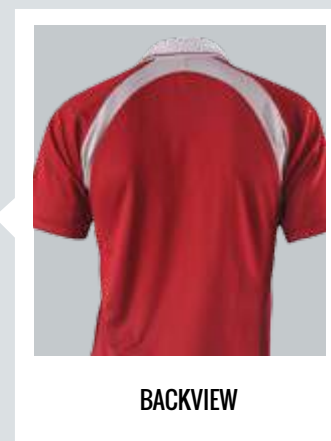
CODE | 2010
COLOR | NAVY / RED



CODE | 2010
COLOR | ROYAL BLUE / WHITE



CODE | 2010
COLOR | MAROON / GREY



BACKVIEW

2055 CUT & SEW POLO (M.F. 3098)

SIZES | S / M / L / XL / 2XL / 3XL



CODE | 2055
COLOR | MARIGOLD / BLACK /
WHITE



CODE | 2055
COLOR | RED / BLACK / WHITE



CODE | 2055
COLOR | NAVY / RED / WHITE



CODE | 2055
COLOR | L.GREEN / NAVY / WHITE



CODE | 2055
COLOR | TURQ / MARIGOLD /
WHITE



SIDEVIEW

2714 CUT & SEW POLO (M.F. FLAT KNITTED)

SIZES | XS/S/M/L/XL/2XL/3XL



CODE | 2714
COLOR | WHITE / HOT PINK



CODE | 2714
COLOR | YELLOW / BLACK



CODE | 2714
COLOR | LGREEN / WHITE



CODE | 2714
COLOR | RED / WHITE



CODE | 2714
COLOR | NAVY / C.BLUE



2522 CUT & SEW POLO WITH PIPING (M.E MINI WAFFLE)

SIZES | S/M/L/XL/2XL/3XL



CODE | 2522
COLOR | ORANGE / BLACK



CODE | 2522
COLOR | RED / NAVY



CODE | 2522
COLOR | ROYAL BLUE / WHITE



CODE | 2522
COLOR | DK.PURPLE / GREY



CODE | 2522
COLOR | NAVY / L.GREEN

2050 CUT & SEW POLO (M.F 4090)

SIZES | S / M / L / XL / 2XL / 3XL



CODE | 2050
COLOR | WHITE / ROYAL BLUE



CODE | 2050
COLOR | RED / BLACK



CODE | 2050
COLOR | BLACK / ORANGE



CODE | 2050
COLOR | PARADISE GREEN / WHITE



CODE | 2050
COLOR | LT.BLUE / WHITE



CODE | 2050
COLOR | ROYAL BLUE / WHITE

2069N CUT & SEW POLO (M.F 0866)

SIZES | S/M/L/XL/2XL/3XL



CODE | 2069N
COLOR | WHITE / RED



CODE | 2069N
COLOR | RED / WHITE



CODE | 2069N
COLOR | LGREEN / GREY



CODE | 2069N
COLOR | ROYAL / WHITE



CODE | 2069N
COLOR | BLACK / YELLOW





2724 UNBALANCE CUT & SEW POLO (M.F TWILL)

SIZES | XS / S / M / L / XL / 2XL / 3XL



CODE | 2724
COLOR | MAGENTA / BLACK / GREY



CODE | 2724
COLOR | L.GREEN / WHITE / NAVY



CODE | 2724
COLOR | R.BLUE / BLACK / WHITE



CODE | 2724
COLOR | NAVY / RED / WHITE



CODE | 2724
COLOR | BLACK / YELLOW / WHITE

2830 CUT & SEW ZIP MOCK NECK (M.F TWILL)

SIZES | XS/S/M/L/XL/2XL/3XL



CODE | 2830
COLOR | YELLOW / LT. GREY



CODE | 2830
COLOR | RED / WHITE



CODE | 2830
COLOR | LGREEN / R.BLUE



CODE | 2830
COLOR | R.BLUE / WHITE



CODE | 2830
COLOR | PURPLE / YELLOW



CODE | 2830
COLOR | BLACK / RED





2802 CUT & SEW MANDARIN COLLAR TEE WITH ZIP (M.F 4090)

SIZES | S/M/L/XL/2XL/3XL



CODE | 2802
COLOR | YELLOW



CODE | 2802
COLOR | ORANGE



CODE | 2802
COLOR | RED



CODE | 2802
COLOR | L.GREEN



CODE | 2802
COLOR | TURQ



CODE | 2802
COLOR | PURPLE

2708 CUT & SEW POLO WITH PIPING (MINI EYELET)

SIZES | S/M/L/XL/2XL/3XL



CODE | 2708
COLOR | ORANGE / BLACK



CODE | 2708
COLOR | RED / NAVY



CODE | 2708
COLOR | LGREEN / NAVY



CODE | 2708
COLOR | TURQ / WHITE



CODE | 2708
COLOR | BLACK / ORANGE

1708 ADULT & CHILDREN CUT & SEW ROUND NECK WITH PIPING (MINI EYELET)

CHILDREN SIZES | 28 / 30 / 32 / 34 / 36

ADULT SIZES | S / M / L / XL / 2XL / 3XL



CODE | 1708
COLOR | ORANGE / BLACK



CODE | 1708
COLOR | RED / NAVY



CODE | 1708
COLOR | L.GREEN / NAVY



CODE | 1708
COLOR | TURQ / WHITE



CODE | 1708
COLOR | BLACK / ORANGE



MUSL

26 T/C SINGLE KNIT
POLYESTER 65% + COTTON

MUSLIMAH 8022

CHILDREN SIZES | 28 / 30 / 32 / 34 / 36
ADULT SIZES | S / M / L / XL / 2XL / 3XL



CODE | 8022
COLOR | HOT PINK / BLACK



CODE | 8022
COLOR | G.YELLOW / BLACK



CODE | 8022
COLOR | L.GREEN / DK.GREEN



CODE | 8022
COLOR | D.PURPLE / PINK



CODE | 8022
COLOR | NAVY / LT. PURPLE

IMAH

35%

MUSLIMAH 8001 / 8003

SIZES | S/M/L/XL/2XL/3XL



CODE | 8001
COLOR | MAROON / BLACK



CODE | 8001
COLOR | DK.PURPLE / PINK



CODE | 8001
COLOR | MARIGOLD / BEIGE



CODE | 8003
COLOR | R.MAROON / BEIGE



CODE | 8003
COLOR | BLACK / MARIGOLD

MUSLIMAH 8004 / 8005

SIZES | S / M / L / XL / 2XL / 3XL



CODE | 8004
COLOR | MAROON / PINK



CODE | 8004
COLOR | P.GREEN / L.GREEN



CODE | 8004
COLOR | ROYAL BLUE / C.BLUE



CODE | 8005
COLOR | ORANGE / BLACK



CODE | 8005
COLOR | DK.PURPLE / BLACK



CODE | 8005
COLOR | NAVY / TURQ

MUSLIMAH 8008

SIZES | S/M/L/XL/2XL/3XL

MUSLIMAH 8008 CHILDREN WITHOUT PRINTING

CHILDREN SIZES | 28 / 30 / 32 / 34 / 36



CODE | 8008
COLOR | BLACK / ORANGE



CODE | 8009
COLOR | L.GREEN / DK.GREEN



SIDEVIEW



CODE | 8011
COLOR | G.YELLOW / BLACK



CODE | 8008
COLOR | ROYAL / C.BLUE



CODE | 8009
COLOR | R.BLUE / C.BLUE



SIDEVIEW



CODE | 8011
COLOR | RED / R.BLUE

MUSLIMAH 8010

SIZES | S / M / L / XL / 2XL / 3XL



CODE | 8010
COLOR | BLACK / L.GREEN



CODE | 8010
COLOR | G.YELLOW / BLACK



CODE | 8010
COLOR | JACARANDA / NAVY

MUSLIMAH 8009 / 8011 / 8012

SIZES | S/M/L/XL/2XL/3XL



CODE | 8009
COLOR | BLACK / L.GREEN



CODE | 8011
COLOR | R.MAROON / PINK /
BLACK



CODE | 8012
COLOR | DK.PURPLE / PURPLE



CODE | 8009
COLOR | NAVY / RED



CODE | 8011
COLOR | L.GREEN / GREEN / BLACK



CODE | 8012
COLOR | BLACK / RED

MUSLIMAH 8021

SIZES | S / M / L / XL / 2XL / 3XL



CODE | 8021
COLOR | FUCHSIA / PINK



CODE | 8021
COLOR | NAVY / RED



CODE | 8021
COLOR | NAVY / TURQ



CODE | 8021
COLOR | BLACK / ORANGE

**2545 POLO
WITH PIPING
(45 T/C INTERLOCK)**

ENZO CLASSIC

The establishment of Enzo Classic is to satisfy our customer's increasing need on high end product. Enzo Classic is strongly backed up by real value: quality, functionality and price. This production line provide simple but stylish and comfortable apparel.





SIZES | S / M / L / XL / 2XL / 3XL



CODE | 2545
COLOR | L.GREEN / WHITE



CODE | 2545
COLOR | DK.TURQ / WHITE



CODE | 2545
COLOR | FUCHSIA / WHITE



CODE | 2545
COLOR | BLACK / YELLOW

1818 PLAIN ROUND NECK (QUICK DRY COTTON)

SIZES | XS/S/M/L/XL/2XL/3XL



CODE | 1818
COLOR | WHITE



CODE | 1818
COLOR | YELLOW



CODE | 1818
COLOR | RED



CODE | 1818
COLOR | PRO GREEN



CODE | 1818
COLOR | M.BLUE



CODE | 1818
COLOR | BLACK

EXTRA COMFORT + WRINKLE FREE

QUICK DRY COTTON

ONE FABRIC, 2 FUNCTIONS

100% cotton is the most popular fabric in premium apparel market due to its comfortable feel and pleasantly cool function. However, due to its natural characteristic of wrinkled, user will have to iron its before wearing. Enzo solve this annoying problem by introducing the WRINKLE FREE COTTON.

Surface of this Wrinkle Free Cotton is structured with cotton while underside is microfiber.

Unlike the traditional wrinkle free cotton which heavily using chemical finish, Enzo Wrinkle Free Cotton adopt microfiber underside to restrict the movement of cotton fiber on surface in order to get wrinkle free result without chemical finishing. At the same times, microfiber underside will absorb moisture while contact with the skin which provide quick dry and cool feeling.



2573 CUT & SEW POLO (45 T/C INTERLOCK)

SIZES | XS/S/M/L/XL/2XL/3XL



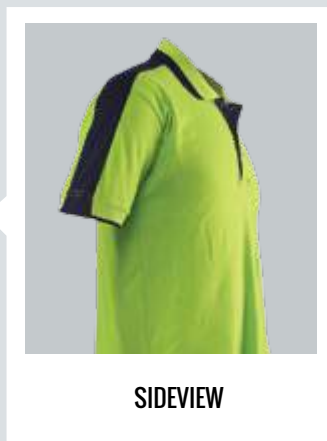
CODE | 2573
COLOR | WHITE / DK. TURQ



CODE | 2573
COLOR | NAVY / OLIVE GREEN



CODE | 2573
COLOR | L.GREEN / NAVY



SIDEVIEW



CODE | 2573
COLOR | RED / WHITE



CODE | 2573
COLOR | DK.TURQ / NAVY



CODE | 2573
COLOR | BLACK / FUCHSIA



2073 CUT & SEW POLO (45 T/C INTERLOCK)

SIZES | S/M/L/XL/2XL/3XL



CODE | 2073
COLOR | BEIGE / NAVY



CODE | 2073
COLOR | ORANGE / BLACK



CODE | 2073
COLOR | RED / BLACK



CODE | 2073
COLOR | ROYAL BLUE / ORANGE

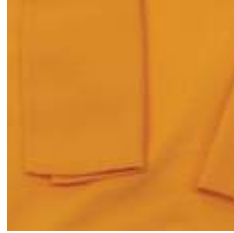


CODE | 2073
COLOR | NAVY / RED

40 FULLY COMB COTTON(WITH COLOR MATCHING COLLAR) FOR CUSTOM MADE ONLY



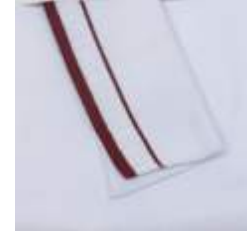
40 FC COTTON
GREY BLUE



40 FC COTTON
MARIGOLD



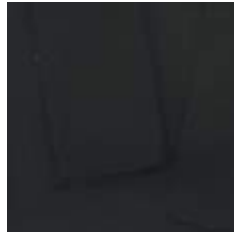
40 FC COTTON
COLLEAGE NAVY
COLLAR: FB04 NAVY/RED



40 FC COTTON
WHITE
COLLAR: FB01 WHITE /MAROON



40 FC COTTON
FUCHSIA



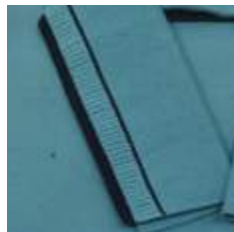
40 FC COTTON
BLACK



40 FC COTTON
KHAKI
COLLAR: FB03 KHAKI/BLACK



40 FC COTTON
DARK TURQ



40 FC COTTON
PRO GREEN
COLLAR: FB05 PRO GREEN/NAVY



40 FC COTTON
SOFT YELLOW
COLLAR: FB02 S. YELLOW/NAVY

9001 SOCCER SHORT

SIZES | S/M/L/XL/2XL/3XL



CODE | 9001
COLOR | WHITE



CODE | 9001
COLOR | RED



CODE | 9001
COLOR | ROYAL BLUE



CODE | 9001
COLOR | BLACK

CODE | OFFICE JACKET
COLOR | BLACK

OFFICE JACKET





REVERSIBLE WINDBREAKER

SIZES | S / M / L / XL / 2XL / 3XL

CODE | REVERSIBLE WINDBREAKER

COLOR | BLACK / ORANGE

CODE | REVERSIBLE WINDBREAKER
COLOR | NAVY / KHAKI



COTTON WOOL



COTTON WOOL PLAIN CAP



COTTON WOOL

APPLE GREEN
H102

MAROON
H108

YELLOW
H103

PINK
H113

CAPS

MICROFIBRE CAP



NAVY / WHITE
C0509



RED / WHITE
C0500



RED / BLACK
C0510



ROYAL / WHITE
C0507



WHITE / RED
C0512

ROYAL / WHITE
C0807

WHITE / RED
C0800

RED / WHITE
C0812

NAVY / WHITE
C0809

BLACK / RED
C0810

MICROFIBRE CAP

PRODUCTS DETAIL



2588



2572



2573



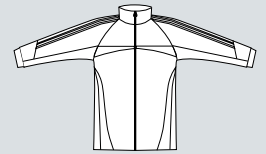
2816



2260



2283



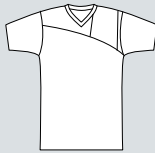
WINDBREAKER



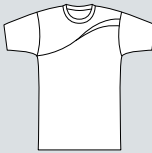
2714



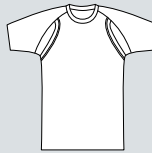
2724



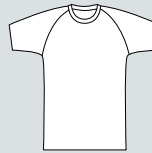
1796N



1804



1066



1028



2830



2085



2069N



2522



2075



2520



2521 S



2521 L



2088



1709



2055



2708



2073



2121



2121 L



2100



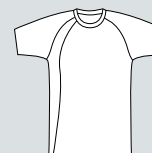
2545



2079



1018



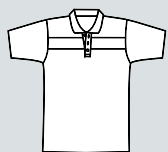
1012



2111



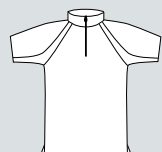
2111 L



2574



2678



2068



2802



1038



2093 S



2093 L

MEASUREMENTS

POLO & ROUND NECK

| SIZE | SHOULDER | CHEST | LENGTH |
|------|----------|-------|--------|
| S | 18" | 38" | 27" |
| M | 19" | 40" | 28" |
| L | 20" | 42" | 29" |
| XL | 21" | 44" | 30" |
| 2XL | 22" | 46" | 31" |
| 3XL | 23" | 48" | 32" |

MUSLIMAH

| SIZE | SHOULDER | CHEST | LENGTH |
|------|----------|-------|--------|
| S | 18" | 38" | 32" |
| M | 19" | 40" | 33" |
| L | 20" | 42" | 34" |
| XL | 21" | 44" | 35" |
| 2XL | 22" | 46" | 36" |
| 3XL | 23" | 48" | 37" |

MINI POLO

| SIZE | SHOULDER | CHEST | LENGTH |
|------|----------|-------|--------|
| S | 13" | 32" | 20" |
| M | 14" | 34" | 21" |
| L | 15" | 36" | 22" |
| XL | 16" | 38" | 23" |
| 2XL | 17" | 40" | 24" |
| 3XL | 18" | 42" | 25" |

CHILDREN

| SIZE | SHOULDER | LENGTH |
|------|----------|--------|
| 26 | 26" | 17.5" |
| 28 | 28" | 19" |
| 30 | 30" | 20.5" |
| 32 | 32" | 22" |
| 34 | 34" | 23.5" |
| 36 | 36" | 25" |

MICROFIBER CARE TIPS

- SUGGEST TO WASH IN A LAUNDRY BAG TO PREVENT SNAG YARN.
- FOR MIX LOADS, WASH WITH NON-LINTING SYNTHETIC MATERIAL.
- DO NOT USE SOFTENER WHEN WASHING, IT WOULD CLOGGING UP THE FABRIC TO BECOME LESS EFFECTIVE.
- USE ONLY COLD OR WARM WATER WITH MILD DETERGENT TO WASH.
- DO NOT BE DRIED DIRECTLY UNDER SUN.
- USE ONLY LOW TO MEDIUM TEMPERATURE DURING IRONNING IF NECESSARY



COLOUR FASTNESS



ANTI - SHRINKAGE



WATER ABSORBANCE

Product Catalogue Vol. 06 (2015)
 Copy right 2015. All rights reserved by Enzo marketing Sdn. Bhd.
www.enzo.com.my

