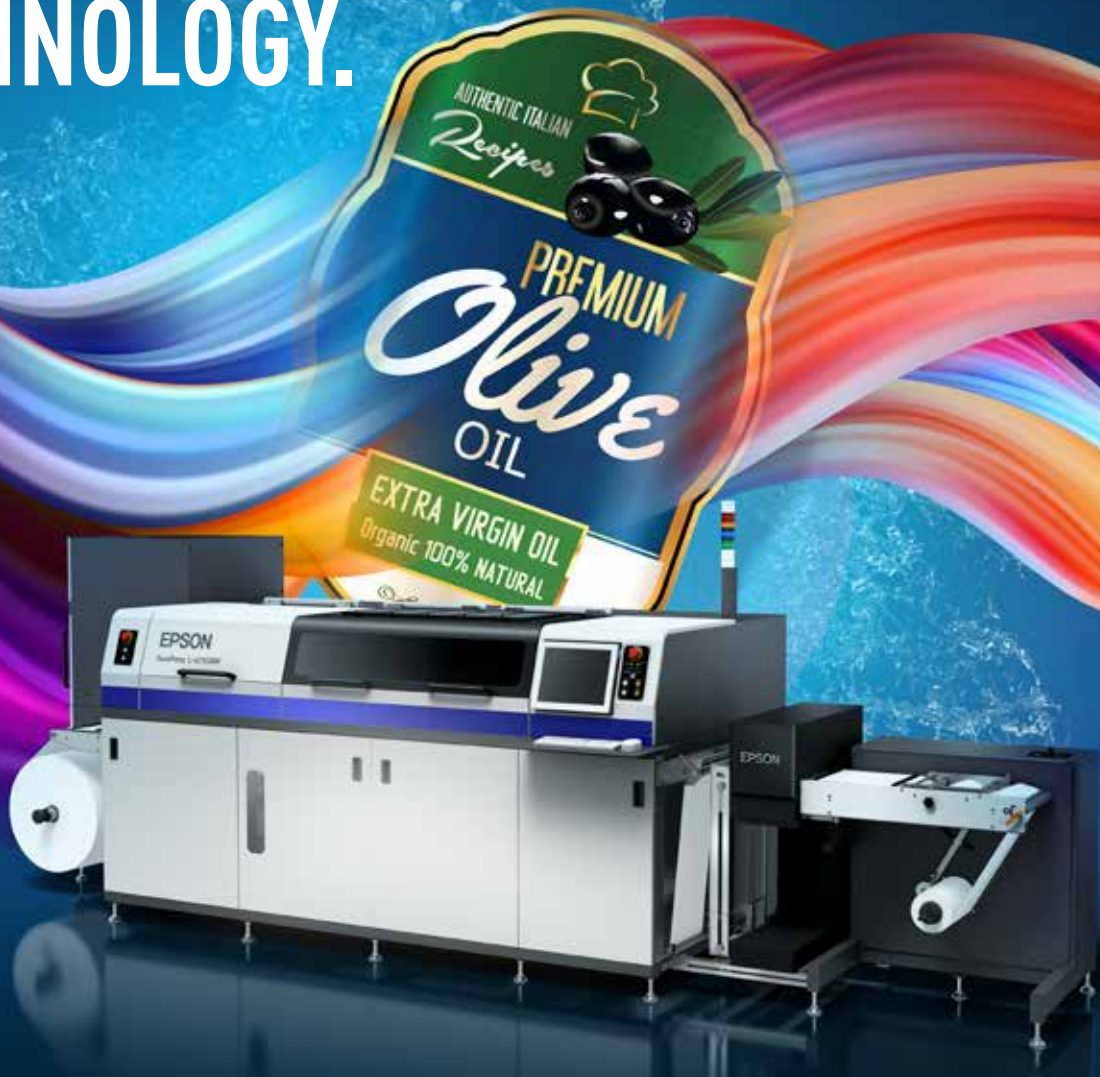


# STUNNING PRINTS WITH AQUEOUS INK TECHNOLOGY.



## Short-run printing made superior and efficient with Aqueous Ink technology.

Maximise your production run with Epson's SurePress L-4733AW. Equipped with the Aqueous Ink technology, the digital label press produces impeccable prints with consistent and accurate colour reproduction. Operators can easily realise highly precise colour matching by integrating the optional AS-4000 spectrophotometre to the L-4733AW. Printing on a wide range of label substrates and on an expanded colour gamut, the user-friendly SurePress L-4733AW is the ideal digital label press for all print-for-pay businesses.



## IT'S IN THE DETAILS.

### Superior Quality and Efficiency

Vibrant and high-quality prints with consistent and accurate colour reproduction thanks to Epson's MicroPiezo printhead technology.

### Aqueous Ink technology

Catering to a wider range of colours with the Aqueous Ink technology to provide accurate colour reproduction, even for speciality colours.

### Enhanced Features

Improved drying with carriage and heater fans, user-removable Flushing Bar for maintenance without downtime, embedded display for quick reference, and more.

Make superior short-run printing more efficient and profitable with the SurePress L-4733AW digital label press. Equipped with Epson's innovative MicroPiezo inkjet technology, the printer also features the latest Aqueous Ink technology with a wider colour gamut. Streamline your current workflow with a versatile range of substrates and increased print speeds while keeping operating costs low with the L-4733AW.

## Superior Print Quality and Consistency

### Dual Drying System

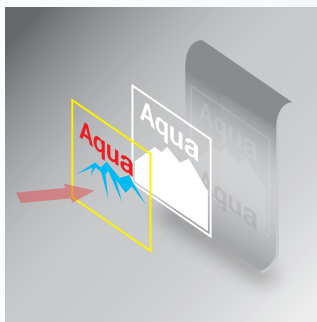
A unique two-stage drying process ensures optimum ink adhesion to label substrates. The first drying stage is a platen heater, which starts fixing the image onto the substrate.

The substrate then moves down to the second drying stage, where hot air blown from a fan evaporates the remaining moisture. After drying, the substrate moves directly to the rewinder.

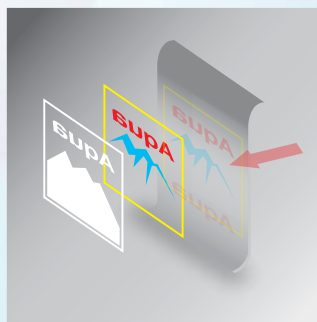


### Epson SurePress AQ Ink

A water-based pigment ink-set has been developed specifically for the SurePress L-4733AW with eight colours including green and orange for an extra-wide colour gamut. This ensures accurate colour reproduction for precise colour matching with excellent adhesion on a wide variety of label substrates, without the need for any pre-treatments or coatings. An opaque white ink is also available.



Surface-White Print



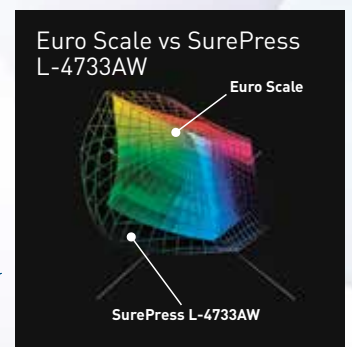
Reverse-White Print



### Wider Colour Gamut

The SurePress uses a water-based pigment ink that features a wide selection of colours that include Green and Orange, in addition to Cyan, Magenta, Yellow, Black, Uncoated Black and White, expanding the colour gamut. The difference is especially noticeable in the bright green to yellow and yellow-orange-red portions of the colour space.

The ink set allows you to have a higher print accuracy and colour saturation to make your labels look even more appealing on a wide variety of label stock substrates, without the need for any pre-processing.



## Expand offering and boost bottom line

Delivering impeccable prints across a wide range of label substrates, your business can boost profitability with an expanded print offering using the reliable SurePress L-4733AW. With accurate colour matching and consistency in colour reproduction, the efficient digital label press is perfect for all businesses.

### MicroPiezo Multi-Printheads

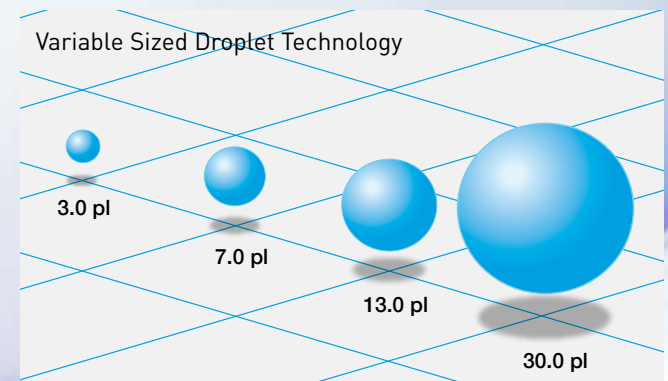
SurePress leverages on Epson's advanced MicroPiezo inkjet technology, synonymous with high quality output, reliability and performance.

Using piezo electric technology, the amount of ink pulled into and expelled out of the nozzles can be very accurately controlled by varying the electrical charge applied to the piezo electric elements. This enables the print head to eject ink droplets in a range of precisely controlled sizes. MicroPiezo delivers accurate dot shapes and placement for each colour to ensure high-end colour quality and sharp detail needed especially for barcodes and small text.



### Variable-Sized Droplet Technology

Epson's Variable-Sized Droplet Technology produces different sized ink droplets as small as 3.0 picolitres. These precisely-sized droplets allow the ink to be uniformly applied, contributing to smooth gradations and accurate colours for optimum image quality.



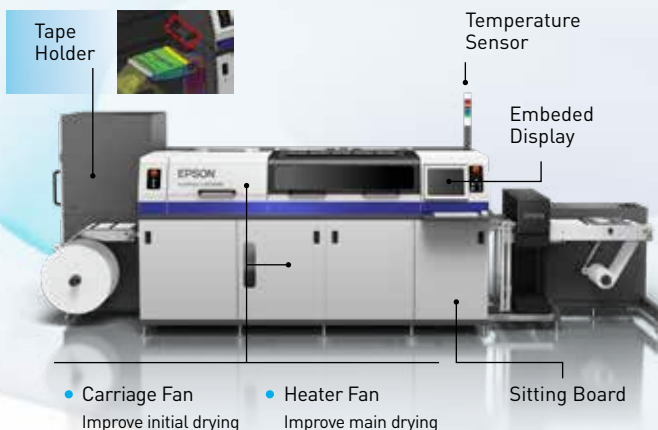
## Increased Productivity and Accuracy

### User-friendly Features

Dual Ink Cartridges allows auto switching which ensures uninterrupted operations, minimising downtime during production. Ink levels are easily monitored via the display and empty cartridges can be easily removed during production without interruptions.

### Enhanced Features

Equipped with an embedded display, operators can easily check ink levels and other production details without hassle. The SurePress L-4733AW comes with a temperature sensor, tape holder, and sitting board to facilitate device operation. With the carriage fan that improves initial drying, the digital label press also has a heater fan that supports the main drying process.



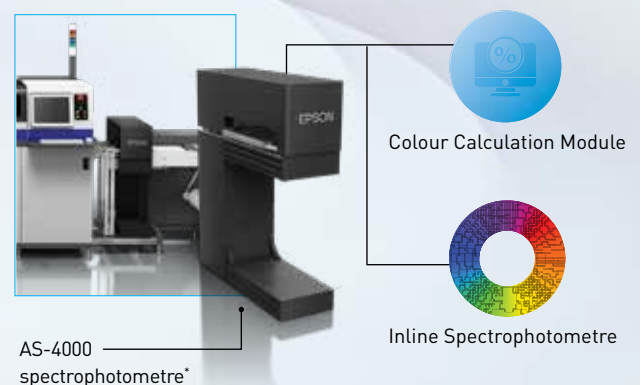
### Ease-of-Use

Save time and money with minimal maintenance requirements. The printing mechanism is easy to access and maintain. Additionally, ink replacement is quick and easy, without a need to stop the press – simply replace the empty ink cartridges and continue printing. Remote diagnostics and analysis is also available to support your business.

### Quick and Fuss-Free Spot Colour Matching\*

The SurePress L-4733AW supports the SureSpectro AS-4000 spectrophotometre, allowing the digital label press to realise highly precise colour matching for all its prints.

\*The AS-4000 is an optional component for the main unit.



## SPECIFICATIONS

<b>Model Number</b>	<b>L-4733AW</b>
<b>SKU Code</b>	C11CJ59104
<b>Printing Technology</b>	
Print Head	MicroPiezo Printhead
<b>Print Speed</b>	
Speed	Up to 8.2m per minute*
4 Pass	5 m/min
6 Pass	3.6 m/min
8 Pass	2.8 m/min
16 Pass	1.4 m/min
Wh 4 Pass + Colour 6 Pass	1.5 m/min
Wh 6 Pass + Colour 6 Pass	1.3 m/min
Wh 8 Pass + Colour 6 Pass	1.1 m/min
<b>Image Size</b>	315.2mm x 914.4mm
<b>Ink System</b>	
Ink Type	SurePress AQ Ink T4 (SurePress AQ Inks)
Ink Cartridge	Black, Uncoated Black, Cyan, Magenta, Yellow, Orange, Green, White, Moisture Liquid, Over Print Liquid, Storage Liquid
<b>Paper Handling</b>	
Substrate Thickness	80 to 320 µm
Substrate Width	80 to 334 mm (Adjustable to support any width in this range)
Substrate Support	Standard self adhesive label substrate, Semi gloss, gloss and matte paper stock, BOPP, PET, Yupo and pre-laminated film
<b>Connectivity</b>	
Network	Ethernet 1000 base-T or higher is recommended
<b>Electrical Specifications</b>	
Power Requirements	Input voltage range: Rated voltage 10% (180 – 220V) Rated voltage: AC (3 phases 3 lines) 200V
<b>Environmental Conditions</b>	
Temperature	Operating: 18°C to 28°C,
Humidity	Operating: 35% to 55% (no condensation)
Sound Power	Operating: 75dB or less (excluding the alarm sound)
<b>Dimensions &amp; Weight</b>	
Press (W x H x D)	3,950 x 2,020 x 1,910 mm
Press & Rewinder (W x H x D)	5,100 x 2,020 x 1,910 mm
Weight of Press	Approx. 1,870kg including rewriter
Weight of Rewinder	Approx. 180kg
Unwinder Capacity (Max.)	100kg weight / 1,000m length, 600mm diameter with 76mm (3") inner core

\* The actual throughput depends on a few factors:

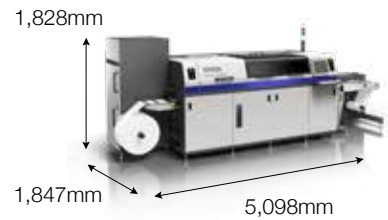
1. The print quality required (which will determine the number of pass required)
2. The type of substrates used (which will have an impact on drying temperature and time balancing with the material robustness under heater. i.e. no crumbling etc.)

Usage Restrictions:

Epson's SurePress ink is not intended for direct food contact printing.

## Dimensions and Weight

**Weight:** Approx. 1870kg



## INK CARTRIDGE

Black	C13T639100
Cyan	C13T639200
Magenta	C13T639300
Yellow	C13T639400
Uncoated Black	C13T639A00
Orange	C13T639600
Green	C13T639700
White	C13T639B00
Moisture (700ml)	C13T639D00
Over Print Liquid	C13T639000
Storage Liquid	C13T639C00

©2022 Epson Singapore Pte Ltd. All Rights Reserved. Reproduction in part or in whole, without the written permission from Epson, is strictly prohibited.

EPSON and EXCEED YOUR VISION are registered trademarks of Seiko Epson Corporation.

All other product names and other company names used herein are for identification purposes only and are the trademarks or registered trademarks of their respective owners.

Epson disclaims any and all rights in those marks. Projected images shown herein are simulations. The actual product design and contents may vary. Specifications are subject to change without notice and may vary between countries. Please check with local Epson offices for more information.

Apple, iPad and iPhone are trademarks of Apple Inc., registered in the U.S. and other countries. App Store is a service mark of Apple Inc.

Android is a trademark of Google Inc.

Dealer's Stamp

Information correct at time of printing.  
Printed January 2023



To find out more, visit [www.epson.com.my/industrialprinting](http://www.epson.com.my/industrialprinting) or call **1800-81-7349 (Toll-Free)**.

[f](#) [i](#) [in](#) EpsonMalaysia [You Tube](#) EpsonSoutheastAsia

Check your warranty terms at [www.epson.com.my/warrantyinc](http://www.epson.com.my/warrantyinc)

Epson Malaysia Sdn Bhd (211204-X) 3rd Floor, East Tower, Wisma Consplant 1, No. 2, Jalan SS16/4, 47500 Subang Jaya, Selangor Darul Ehsan. Tel: 603-56 288 288 Fax: 603-56 212 088  
Epson is the registered trademark of Seiko Epson Corporation. All other product names and other company names used herein are for caption purposes only and are the trademarks or registered trademarks of their respective owners. EPSON disclaims any and all rights in those marks. Scan/Print samples shown here are simulations. Specifications are subject to change without notice.