



VersaCamm VS-640i / VS-540i / VS-300i

Specifications			
Model		VS-640i	VS-540i
Printing technology		Piezoelectric inkjet	
Media	Width	210 to 1,625 mm (8.3 to 64 in.)	210 to 1,371 mm (8.3 to 54 in.)
	Thickness	Maximum 1.0 mm (39 mil) with liner, for printing	Maximum 0.4 mm (16 mil) with liner and 0.22 mm (9 mil) without liner, for cutting
	Roll outer diameter	Maximum 210 mm (8.3 in.)	
	Roll weight	Max. 40 kg (88 lbs)	Max. 30 kg (66 lbs)
	Core diameter*1	76.2 mm (3 in.) or 50.8 mm (2 in.)	Max. 25 kg (55 lbs)
Printing/cutting width*2		Max. 1,600 mm (63 in.)	Max. 1,346 mm (53 in.)
Ink cartridges	Types	440cc cartridge (cyan, magenta, yellow, black, light cyan, light magenta, and light black)	
	Colors	Eight colors (cyan, magenta, yellow, black, light cyan, light magenta, light black, and white) or, Eight colors (cyan, magenta, yellow, black, light cyan, light magenta, light black, and metallic silver) or, Eight colors (cyan, magenta, yellow, black, light cyan, light magenta, metallic silver, and white) or, Seven colors (cyan, magenta, yellow, black, light cyan, light magenta, and light black) or, Four colors (cyan, magenta, yellow, and black)	
Printing resolution (dots per inch)		Maximum 1,440 dpi	
Cutting speed		10 to 300 mm/s	
Blade force		30 to 300 gf	
Cutting blade		Type: Roland CAMM-1 series compatible Blade offset: 0.000 to 1.500 mm (0.000 to 0.059 in.)	
Software resolution (when cutting)		0.025 mm/step	
Distance accuracy (when printing)*3**4		Error of less than ±0.3% of distance traveled, or ±0.3 mm, whichever is greater	
Distance accuracy (when cutting)*5		Error of less than ±0.4% of distance traveled, or ±0.3 mm, whichever is greater When distance correction has been performed (when the setting for [CUTTING MENU] - [CALIBRATION] has been made): Error of less than ±0.2% of distance traveled, or ±0.1 mm, whichever is greater	
Repeatability (when cutting)*6**5		±0.1 mm or less	
Alignment accuracy for printing and cutting**6		±0.5 mm or less	
Alignment accuracy for printing and cutting when reloading media**7**7		Error of less than ±0.5% of distance traveled, or ±3 mm, whichever is greater	
Media heating system**8		Print heater Setting range for the preset temperature: 30 to 45°C (86 to 112°F)	
Connectivity		Dryer Setting range for the preset temperature: 30 to 50°C (86 to 122°F)	
Power-saving function		Ethernet (10BASE-T/100BASE-TX, automatic switching)	
Power requirements		Automatic sleep feature AC 100 to 120 V ±10%, 7.5 A, 50/60 Hz or AC 220 to 240 V ±10%, 3.8 A, 50/60 Hz	AC 100 to 120 V ±10%, 5.1 A, 50/60 Hz or AC 220 to 240 V ±10%, 2.6 A, 50/60 Hz
Power	During operation	Approx. 1,044 W	Approx. 995 W
	Sleep mode	Approx. 14.5 W	Approx. 670 W
Acoustic noise level		During operation: 69 dB (A) or less	During standby: 43 dB (A) or less
Dimensions (with stand)		2,575 (W) x 795 (D) x 1,270 (H) mm (101.4 (W) x 31.1 (D) x 50 (H) in.)	2,315 (W) x 795 (D) x 1,270 (H) mm (91.1 (W) x 31.1 (D) x 50 (H) in.)
Weight (with stand)		140 kg (309 lbs)	130 kg (287 lbs)
Environmental	Power on	Temperature: 15 to 32°C (59 to 90°F) [20°C (68°F) or more recommended], humidity: 35 to 80%RH (non-condensing)	
	Power off	Temperature: 5 to 40°C (41 to 104°F), humidity: 20 to 80%RH (non-condensing)	
Included items		Exclusive stands, power cord, blade, blade holder, media clamps, media holder, replacement blade for separating knife, User's Manual, etc.	

About Metallic Silver and White Inks

Due to the nature of white and silver inks, the pigment in these inks will settle in the cartridge and ink flow system, requiring you to shake the cartridge before each use. Outdoor durability is three years for CMYK inks, one year for white ink, and one to three years for metallic silver ink, depending on the media used. Roland strongly recommends lamination for both indoor and outdoor graphics to ensure the quality of metallic inks.

Roland reserves the right to make changes in specifications, materials or accessories without notice. Your actual output may vary. For optimum output quality, periodic maintenance to critical components may be required. Please contact your Roland dealer for details. No guarantee or warranty is implied other than expressly stated. Roland shall not be liable for any incidental or consequential damages, whether foreseeable or not, caused by defects in such products. Adobe, PostScript, PostScript 3 and the PostScript logo are trademarks of Adobe Systems Incorporated. PANTONE® is the property of Pantone LLC. All other trademarks are the property of their respective owners. Reproduction or use of copyrighted material is governed by local, national, and international laws. Customers are responsible for observing all applicable laws and are liable for any infringement. Roland DG Corporation has licensed the MMP technology from the TPL Group.



AUTHORIZED DEALER:



Options	
Model	Description
ESL4-4CY	Cyan, 440cc
ESL4-4MG	Magenta, 440cc
ESL4-4YE	Yellow, 440cc
ESL4-4BK	Black, 440cc
ESL4-4LC	Light cyan, 440cc
ESL4-4LM	Light magenta, 440cc
ESL4-4LK	Light black, 440cc
ESL4-MT	Metallic silver, 220cc
ESL4-WH	White, 220cc
Cleaning cartridge	ESL4-CL Cleaning liquid, 1 pc.
Blades	ZEC-US025 For thick, reflective and fluorescent vinyl, as well as sign vinyl in general, 5pcs.
	ZEC-US022 For sign vinyl in general, 2pcs.
Blade Holders	XD-CH2 Blade holder with blade extension adjuster, made of aluminum
	XD-CH3 Blade holder with blade extension adjuster, made of resin

Roland VersaWorks System Requirements

Operating system	Windows® 8/8.1 (32/64-bit); Windows® 7 Professional or Ultimate (32/64-bit); Windows Vista® Business/Ultimate (32/64-bit)
CPU	Intel® Core™2 Duo, 2.0 GHz or faster recommended
RAM	2 GB or more recommended
Video card and monitor	A resolution of 1,280 x 1,024 or more recommended
Free hard-disk space	40 GB or more recommended
Hard-disk file system	NTFS format
Optical drive	DVD-ROM drive

*Roland VersaWorks is a 32-bit application, which runs on 64-bit Windows® with WoW64 (Windows 32-bit on Windows 64-bit). *Windows® RT is excluded.

*1 The media holder for this machine is exclusively designed for media rolls with a paper tube measuring 3 inches in diameter. To use 2-inch media rolls, the optional media hangers are required. *2 The length of the production run is subject to the limitations of the software program. *3 *Media type: Media specified by Roland DG Corporation. *Temperature: 25°C (77°F), humidity: 50%. *Roll media must be loaded correctly. *Applicable when all pinch rollers available to the media width are used. *Side margins: 25 mm or more for both the left and right margins *Front margin: 35 mm or more *Excluding expansion/contraction of the media *Not assured when the print heater or dryer is used. *All correction or adjustment functions of this machine have been made properly. *4 With Roland PET film, print travel: 1 m *5 [PREFEED] menu item must be set to "ENABLE." Range for assured repetition accuracy [64-inch model] *For media with a width exceeding 610 mm: Length 4,000 mm *For media with a width of 610 mm or less: Length 8,000 mm [54-inch model] *For media with a width exceeding 610 mm: Length 4,000 mm [30-inch model] *For media with a width of 610 mm or less: Length 8,000 mm *6 *Provided that media length is under 3,000 mm *Excludes the effects of slanted movement and of expansion and contraction of the media. *7 Data size [64-inch model] 1,000 mm in the media-feed direction, 1,600 mm in the carriage-movement direction [54-inch model] 1,000 mm in the media-feed direction, 1,346 mm in the carriage-movement direction [30-inch model] 1,000 mm in the media-feed direction, 736 mm in the carriage-movement direction *No lamination *Automatic detection of crop marks at 4 points when media is reloaded. *During cutting, [PREFEED] menu item must be set to "ENABLE." *Excluding possible shift caused by expansion/contraction of the media and/or by reloading the media. *8 *Warm up is required after power up. This may require 5 to 20 minutes, depending on the operating environment. *Depending on the ambient temperature and media width, the preset temperature may not be reached.

Roland DG products that feature this environmental label meet the company's criteria for environmental consciousness, a set of standards based on ISO 14021 self-declaration type II. For more information, please visit www.rolanddg.com.



Printed in Japan. RDG-416097999 14 JUL CE-2 D-S

www.rolanddg.com

Imagine.
Roland®

VersaCamm

Print & Cut VS-640i / VS-540i / VS-300i

Option	
Automated take-up system	
TU2-64 [For VS-640i] TU2-54 [For VS-540i] TU2-30 [For VS-300i]	* Rolls up to 30kg (66 lbs.)
Heater and blower	
OndS 640A/B [For VS-640i] OndS 540A/B [For VS-540i] OndS 300A/B [For VS-300i]	*It is recommended to use heater and blower especially for printing with white and metallic.
Power requirements	
OndS ***A : AC 100 to 115 V, 6 A, 50/60 Hz OndS ***B : AC 200 to 240 V, 3 A, 50/60 Hz	



Versatile performance that powers your imagination

VersaCAMM, the most popular wide-format inkjet printer for sign and durable graphics users around the world, has been reborn with superior performance to meet the needs of sign and graphics professionals. The versatile VersaCAMM VS-i series features the new high-density ECO-SOL MAX 2 ink available in CMYKLCm, white, metallic and Light Black, a range of usability enhancements to improve ease of use, world leading integrated contour cutting, and of course, exceptional print quality rivaling that of a high-end machine. Go beyond your imagination and turn your ideas into reality with the exceptional quality and greater versatility of the new VersaCAMM VS-i.

VersaCAMM

A large, blue Roland VersaCAMM wide-format inkjet printer is shown in a studio setting. The printer is printing a large, vibrant blue hydrangea bouquet over a grayscale image of a woman's face. The woman's face is partially obscured by the bouquet, and her eyes are closed. The printer has a control panel on the right side with a small screen and buttons. The overall image is a high-quality advertisement for the VersaCAMM printer.

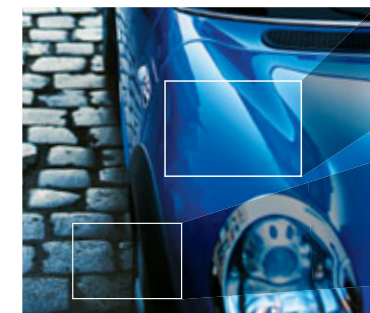
Exceptional print quality befitting a high-end machine

The VersaCAMM VS-i series delivers the level of print quality sought by sign and graphics professionals. It is equipped with the latest high performance print head, which fires droplets of seven different sizes to optimize image quality for the specific media and print resolutions selected. The VS-i achieves incredibly high resolution rivaling that of high-end machines thanks to precise head control, which maximizes the potential of the print head and ink. Enlarge your print business and make more profit with vibrant, colorful and detailed results from the VersaCAMM VS-i series.



ECO-SOL MAX 2 delivers incredibly sharp image quality

ECO-SOL MAX 2 is a new generation award-winning eco-solvent ink, featuring outstanding long-term outdoor durability and chemical resistance, broad media range and a wide color gamut – all with no nickel compounds. ECO-SOL MAX 2 is engineered for stable, consistent output, and produces vibrant colors with sharp images and text. These enhancements bring out every detail for the highest print quality.



Achieves stunning, vibrant color quality.

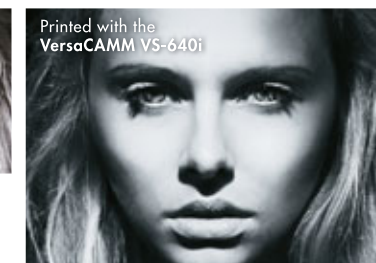
Produces even color and sharp images.

Monochrome printing with excellent gray balance

VersaCAMP VS-i supports the new light black (Lk) ECO-SOL MAX 2 ink, providing highly accurate colors and seamless gradations. With light black, you can achieve a neutral gray for smooth gray scale gradations and precise photographic images, or produce natural, smooth reproduction of skin tones containing light and medium hues. Light black also assists with accurate color reproduction for corporate branding material, such as clothing or cosmetics promotions.



Accurate gray balance and remarkably smooth skin tones

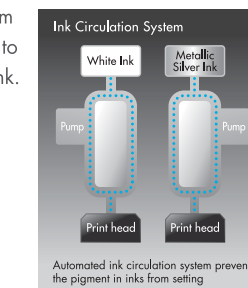


White and metallic printing produces profitable new applications

The standard mode of the new VS-i series can match the image quality of its predecessor's high quality mode*, achieving approximately 1.5 times faster production speed for printing with white. Vibrant full color prints are possible not only with transparent film but also for deep color elements, thanks to the increased density of the new white ink.

In standard mode, the new metallic ink also makes it possible for the VS-i to reproduce the image density of the previous models' high quality mode*, while delivering approximately 2 times faster production speed.

* VersaCamm VS-640/540/300



Cut any shape with advanced Print & Cut technology

The VS-i series features Roland's renowned Print & Cut technology, which prints and automatically contour cuts images into any shape in one seamless workflow. This enables production of versatile applications ranging from window graphics, floor signage, POP, stickers, vehicle decals and apparel heat transfers. The VS-i also introduces a new function for fine adjustment of cutting positions, which minimizes mistakes during the cutting process. Adjustments can be made by 0.01mm for more accurate cutting results. The optional media take-up unit (TU-2) also automatically collects Print & Cut graphics for unattended operation.



You can cut graphics virtually any shape



For short-run production of labels and stickers

Select the best ink configuration for your business

The new VS-i offers a choice of ink configurations, available in 8, 7 and 4 colors to suit your use and objectives, including white or metallic silver ink for producing value-added applications, and light black ink which is perfect for monochrome printing, and highly accurate color reproduction.

	8 Colors : CMYKcLcLm + Light Black (Lk) + White (Wh)	
	8 Colors : CMYKcLcLm + Light Black (Lk) + Metallic Silver (Mt)	
	8 Colors : CMYKcLcLm + White (Wh) + Metallic Silver (Mt)	
	7 Colors : CMYKcLcLm + Light Black (Lk)	<i>*Auxil insert cleaning cartridge.</i>
	4 Colors : Double CMYK	

**Powerful yet easy to use
Roland VersaWorks RIP software**

The VS-i series comes with Roland VersaWorks RIP & print management software, which allows you to fully customize printer settings to meet unique job requirements. Increase the vividness of colors for high-impact outdoor signage, bring out every subtle detail in fine art or photographic reproductions for stunning results, or even manage advanced features such as variable data or clip and tile functions – all from a simple, user friendly interface. The VS-i series also supports built-in PANTONE® libraries that make it easy to match spot colors and reproduce them accurately. You can also replace spot colors with any color included in the Roland Color System, Rolands' own library of more than 1,000 standard colors and 512 metallic shades.



VersaCAMM