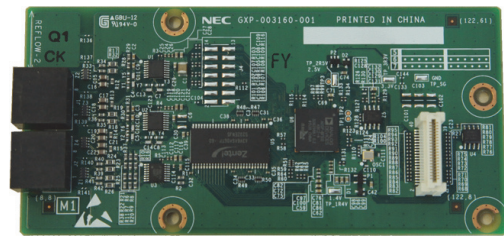


### 2.1.3 IP7WW-EXIFB-C1

Using a Cat5 cable, EXIFB-C1 board mount onto the CPU-C1 board is individually connected to each EXIFE-C1 board (on Expansion Chassis)

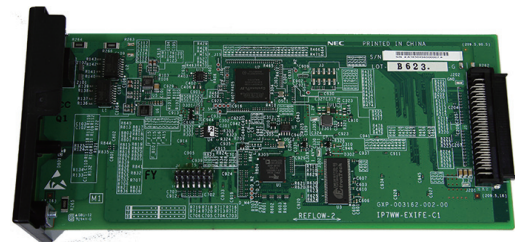
- VRS/VM (InMail) channels expansion (Up to 16ch)
- Additional 48 Telephony resources (DTMF/Dial tone/Busy tone/FSK caller-ID receiver/sender)
- Support Analog Modem (V.34)



### 2.1.4 IP7WW-EXIFE-C1

The EXIFE-C1 board is installed into the CPU/EXIFE slot on the Expansion Chassis.

- Additional 32 telephony resources (DTMF/Dial tone/Busy tone/FSK caller-ID receiver/sender) for Expansion Chassis
- One Bus connectors for Main Chassis (RJ61)



## 2.2 Backup Battery Unit

### 2.2.1 IP4WW-Battery Box

Connected to each Chassis power supply, the external backup battery provides DC power in case a loss of AC power occurs. An optional (locally procured), external battery source can be used to provide power during a power failure.

- Connect this box to the power supply at each Chassis.
- Wall/floor-mountable
- Backup duration is approximately one hour per chassis.
- Battery itself is local procure.  
(12 V, 7 AH x 2 pcs of GS Yuasa NP7-12)

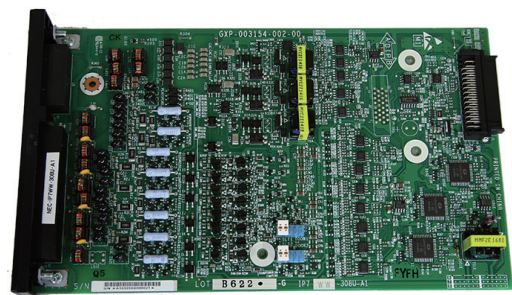


## 2.3 Trunk/Extension/ISDN Expansion Interface Boards

### 2.3.1 IP7WW-308U-A1

This 308U-A1 board is installed to the Universal slot in the IP7[ ]-4KSU-C1 chassis and provides a total of three analog trunks and eight hybrid/analog extension ports. Two general purpose relay, one Audio-In and one Audio-Out ports are initially available.

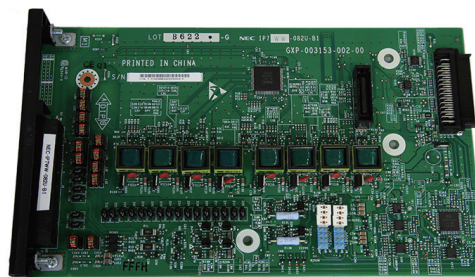
- Install this board to the Universal slot at Controlling/Expansion Chassis
- Enable to connect DSS console to hybrid extension port No.8.
- Enable to connect up to two Door Boxes to hybrid extension port No.6 and No.7.
- The 308U-A1 board and 082U-B1 board cannot be installed in the same system.



### 2.3.2 IP7WW-082U-B1

This 082U-B1 board is installed to the Universal slot in the IP7[ ]-4KSU-C1 chassis and provides a total of eight digital extension ports and two analog extension ports. Two general purpose relay, one Audio-In and Audio-Out ports are initially available. Either the analog trunk daughter board (3COIDB), ISDN BRI daughter board (2BRIDB) or ISDN PRI/T1/E1 daughter board (1PRIDB) can be mounted on this board.

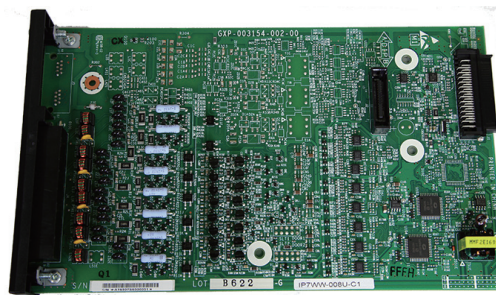
- Install this board to the Universal slot at Controlling/Expansion Chassis
- Enable to connect DSS console to any digital extension port.
- Enable to connect up to two Door Boxes to analog extension ports on this board.
- The 308U-A1 board and 082U-B1 board cannot be installed in the same system.



### 2.3.3 IP7WW-008U-C1

This 008U-C1 board is installed to the Universal slot in the IP7[ ]-4KSU-C1 chassis and provides a total of eight hybrid/analog extension ports. Either the analog trunk daughter board (3COIDB), ISDN BRI daughter board (2BRIDB) or ISDN PRI/T1/E1 daughter board (1PRIDB) can be mounted on this board.

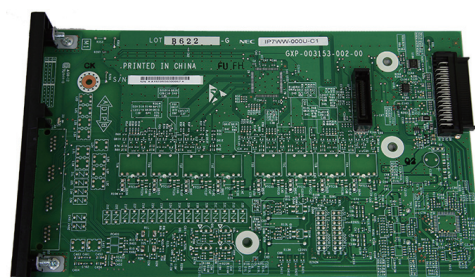
- Install this board to the Universal slot at Controlling/Expansion Chassis
- Enable to connect DSS console to hybrid/analog extension port No.8.
- One Trunk daughter board connection



### 2.3.4 IP7WW-000U-C1

This is an expansion board for mounting a 3COIDB-C1, 2BRIDB-C1 or 1PRIDB daughter board, and is installed to the Universal slot in the IP7[ ]-4KSU-C1 chassis.

- Install this board to the Universal slot at Controlling/Expansion Chassis



### 2.3.5 IP7WW-3COIDB-C1

This 3COIDB-C1 daughter board provides three analog trunk and is mount on the 082U-B1, 008U-[ ]1 or 000U-C1 board. A total of four 3COIDB boards can be mounted per Chassis.

- Mount to the 082U/008U/000U
- No power failure transfer circuit
- No Ground Start Trunk Supported

