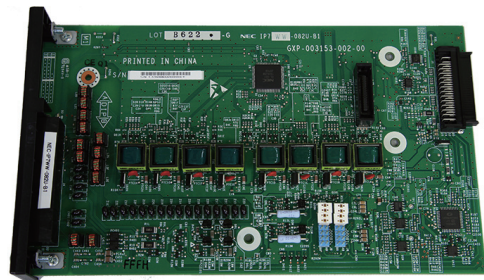


### 2.3.2 IP7WW-082U-B1

This 082U-B1 board is installed to the Universal slot in the IP7[ ]-4KSU-C1 chassis and provides a total of eight digital extension ports and two analog extension ports. Two general purpose relay, one Audio-In and Audio-Out ports are initially available. Either the analog trunk daughter board (3COIDB), ISDN BRI daughter board (2BRIDB) or ISDN PRI/T1/E1 daughter board (1PRIDB) can be mounted on this board.

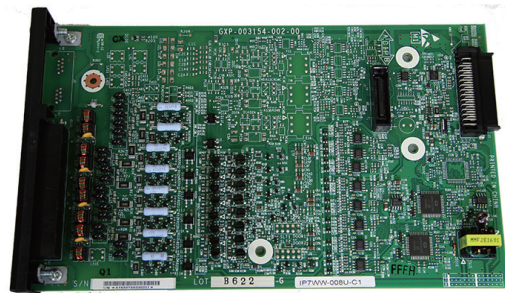
- Install this board to the Universal slot at Controlling/Expansion Chassis
- Enable to connect DSS console to any digital extension port.
- Enable to connect up to two Door Boxes to analog extension ports on this board.
- The 308U-A1 board and 082U-B1 board cannot be installed in the same system.



### 2.3.3 IP7WW-008U-C1

This 008U-C1 board is installed to the Universal slot in the IP7[ ]-4KSU-C1 chassis and provides a total of eight hybrid/analog extension ports. Either the analog trunk daughter board (3COIDB), ISDN BRI daughter board (2BRIDB) or ISDN PRI/T1/E1 daughter board (1PRIDB) can be mounted on this board.

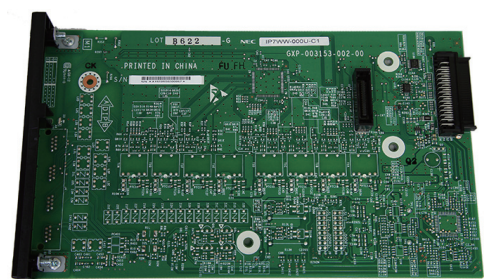
- Install this board to the Universal slot at Controlling/Expansion Chassis
- Enable to connect DSS console to hybrid/analog extension port No.8.
- One Trunk daughter board connection



### 2.3.4 IP7WW-000U-C1

This is an expansion board for mounting a 3COIDB-C1, 2BRIDB-C1 or 1PRIDB daughter board, and is installed to the Universal slot in the IP7[ ]-4KSU-C1 chassis.

- Install this board to the Universal slot at Controlling/Expansion Chassis



### 2.3.5 IP7WW-3COIDB-C1

This 3COIDB-C1 daughter board provides three analog trunk and is mount on the 082U-B1, 008U-[ ]1 or 000U-C1 board. A total of four 3COIDB boards can be mounted per Chassis.

- Mount to the 082U/008U/000U
- No power failure transfer circuit
- No Ground Start Trunk Supported

