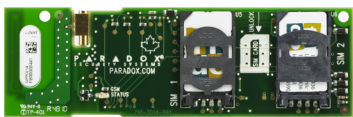


MAGELLAN All-in-One Console  
Communicator Module



GPRS14  
Plug-In Communicator Module

- Features
  - Accessory for the MG6250, used to support GPRS / GSM / SMS reporting
  - Supports 2 standard cellular provider SIM cards, for provider redundancy
  - Simple installation; connects directly onto PCB
  - Dimensions: 11 x 3.5 x 1.5 cm (4.3 x 1.4 x 0.6 in.)



ANTKIT  
Antenna Extension for GPRS14

- Features
  - Improves reception by extending the GPRS14 antenna
  - Includes wall-mounting bracket
  - Length: 2m / 6 ft

MAGELLAN Special Modules



2WPGM  
2-Way Wireless PGM

- Features
  - 1 programmable, 5A relay output
  - Activation events
  - Activates / Deactivates PGM after event or timer
  - Backup Alarm Reporting option (activates PGM output if communication between the MAGELLAN console and the 2WPGM is lost)
  - Built-in transceiver
  - Universal input (N.O. / N.C.)
  - Anti-tamper switch
  - Can be powered by the PA12

► Specifications

Input Voltage	6 to 16.5 Vac or 5 to 20 Vdc
RF Frequency	433 or 868 MHz
Wireless Range	Typical residential environment 35m (115 ft) with MG6250 70m (230 ft) with MG5000 / MG5050 and RTX3
Operating Temperature	0 to 50 °C (32 to 122 °F)
Dimensions	12.5 x 4.6 x 2.5 cm (4.9 x 1.8 x 1.0 in.)



MAGELLAN Power Adapters



PA6  
6 Vdc Power Adapter Plug

- Features
  - For use with K32RF
  - Provides 6 Vdc at 350 mA maximum
  - Includes 1 of 5 different power outlets
  - Dimensions: 4 x 8 x 7 cm (1.6 x 3.1 x 2.8 in.)



PA7  
7.5 Vdc Power Adapter Plug

- Features
  - For use with MG6250
  - Provides 7.5 Vdc at 1A max
  - Includes 1 of 5 different power outlets
  - Dimensions: 4 x 8 x 7 cm (1.6 x 3.1 x 2.8 in.)



PA12  
13.8 Vdc Power Adapter Plug

- Features
  - For use with 2WPGM
  - Provides 13.8 DC at 1A max
  - Includes 1 of 5 different power outlets
  - Dimensions: 4.3 x 7 x 5.1 cm (1.7 x 2.8 x 2 in.)