

FR1200

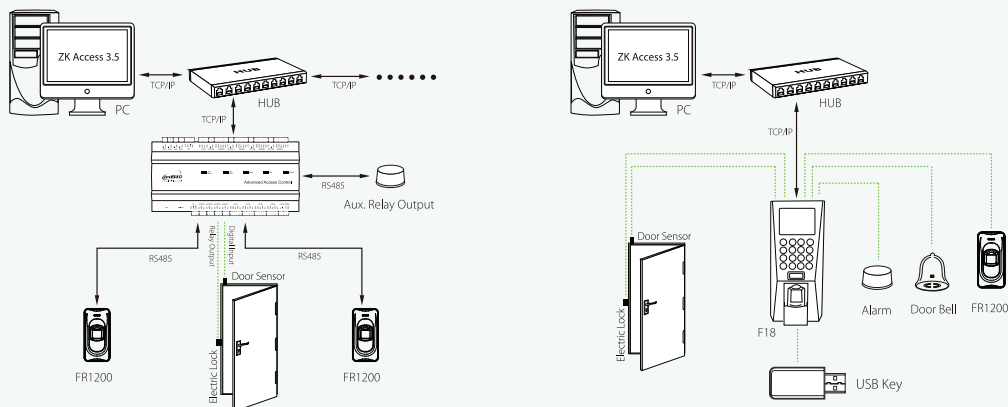
FR1200, a fingerprint reader with RS485 communication interface works with biometric access controllers and fingerprint standalone access control, including inBIO series controllers, F8 and so on. It offers the function of capturing and transferring fingerprint samples to access control panel. With its IP65 rated rugged structure, FR1200 offers extra durability in all weather conditions including outdoor environments.



Specifications

CPU 324MHz	Standard Function ID Card Module	Working Voltage 12VDC	Size Height: 102mm
Sensor ZK small-sized sensor	Optional Function MF Card Module	Working Temperature 0°C ~ 45°C	Width: 50mm
Communication RS485	Voice Prompt Buzzer	Protection Grade IP65	Depth: 37mm

Configuration



ZKTECO CO.,LTD.

ZK Mansion, Wuhe Rd, Gangtou, Bantian, Buji Town,
Longgang District, Shenzhen China 518129
Tel: 86-755-8960 2345/46/47/48
E-mail: sales@zkteco.com
www.zkteco.com

Global Offices:

USA: +1 732-412-6007
EU: +34 916532891
Brazil: +55 31 2515-8326
Thailand: +66-027199154
Mexico: +52-55-52928418

South Africa: +27 12 259 1047
Egypt: +201110444134
Dubai: +971 4 6091 310
India: +91 8123536788
Indonesia: +62 21 2921 8949

Vietnam : +84-0169-5813007
Philippines: +63 9084118832
Russia: +8 915 178-46-81



BELCO SECURITY SDN BHD
E-mail: sales@belco.com.my
www.belco.my

AUTHORISED DISTRIBUTOR