



SKILL BASED

IT TRAINING

AS441

ADVANCED SERVER SUPPORT 1
PROFESSIONAL DEGREE IN IT SUPPORT

Total: 30 marks

QUESTION:

1. List at least three ways of providing redundant power to servers: (3 marks)

2. Below Figure 1 shows linux command. Based on your understanding, what does mean of the output? What is the purpose of the dmesg | grep?

```
root@localhost ~]# dmesg | grep network
0.876171] drop_monitor: Initializing network drop monitor service
4.396153] SELinux: policy capability network_peer_controls=1
4.396154] SELinux: policy capability always_check_network=0
root@localhost ~]#
```

Figure 1

(7 marks)

3. List at least three common sources of information for predictive failure analysis. (3 marks)

4. List at least two environments factors that might contributed to server failures. (2 marks)

5. Below Figure 2 shows VirtualBox VM with Base Memory allocation. Just imagine, you have PC with 8GB of RAM installed. You need to install and run three Ubuntu at the same time. What was the consequence you might be failed and why?

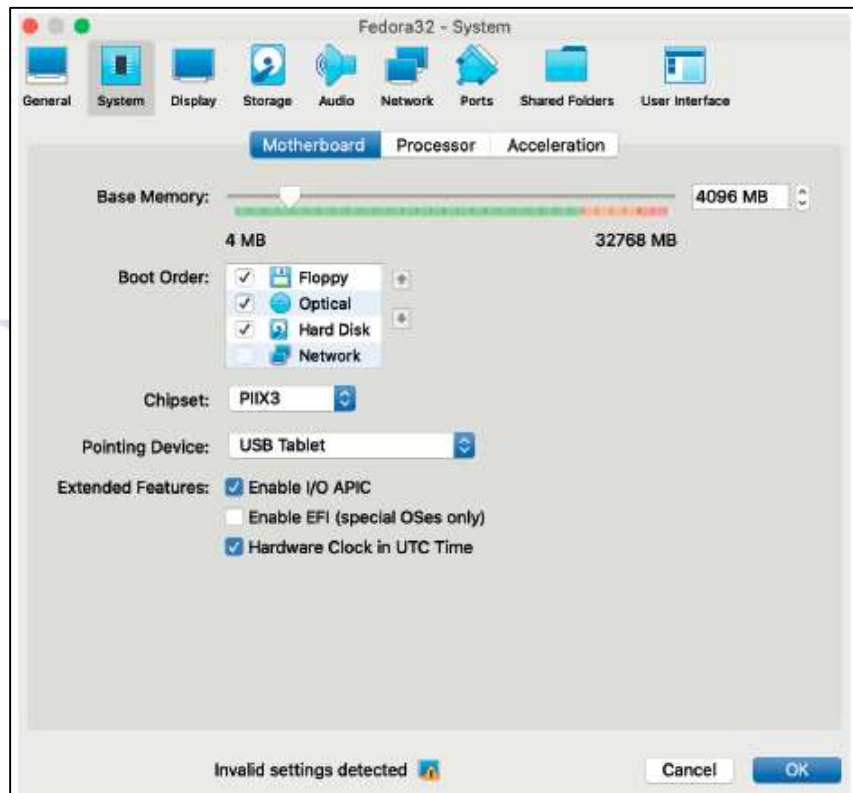


Figure 2

(5 marks)

6. Below shows Figure 3 linux command. What does the command meaning and what was the output?

```
systemctl list-unit-files --type=service | grep -i network
```

Figure 3

(5 marks)

7. Below shows Figure 4 linux command. What does the command meaning and what was the output?

```
logger -p kern.debug "hello world"
```

Figure 4

(5 marks)