



SKILL BASED

IT TRAINING

AS441

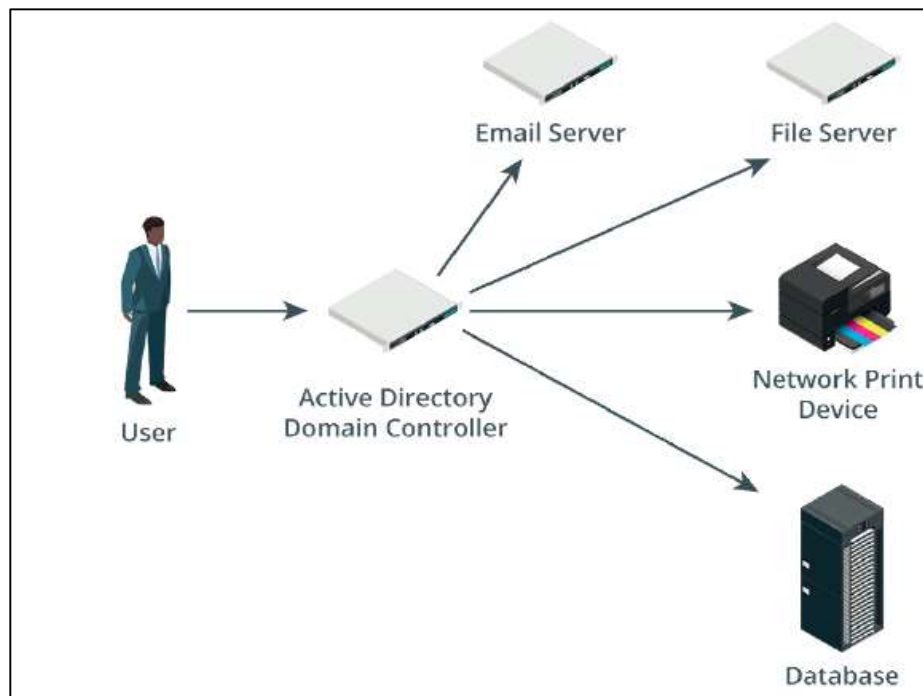
ADVANCED SERVER SUPPORT 1
PROFESSIONAL DEGREE IN IT SUPPORT

Total: 25 marks

QUESTION:

1. What are the three linux commands are used to manage local user accounts?
(3 marks)
2. What are the three primary forms of MFA?
(3 marks)
3. Explain the difference between role-based access control and rule-based access controls.
(6 marks)
4. What are the two types of windows permissions?
(2 marks)
5. What are the three identities used with Linux permission?
(3 marks)
6. What are the three access levels used with Linux permission?
(3 marks)
7. Based on your understanding, please explain what you're seeing in Figure 1.

SKILL BASED
IT TRAINING



(5 marks)

SKILL BASED
IT TRAINING