

# LE MINI: The precisely accurate mini's.

The world's smallest air heater with integrated temperature probe. Especially suited for applications in which heat is concentrated to a point. They are simple to integrate even into the tightest of spaces. LE MINI operates with compressed air at a pressure of 0.2 MPa (2 bar). Model versions are available with or without an integrated sensor. The SENSOR KIT add-on box offers a ready-to-use solution with its integrated power electronics and temperature regulator.

## Air heater

### LE MINI



## Air heater

### LE MINI SENSOR



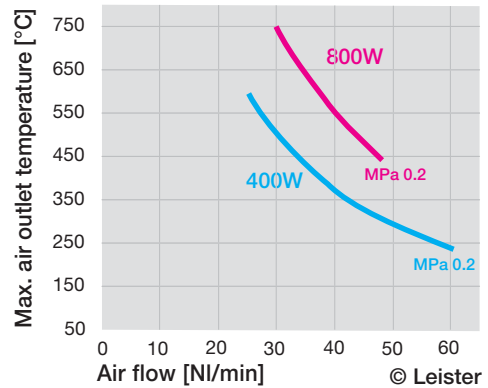
## Air heater

### LE MINI SENSOR KIT

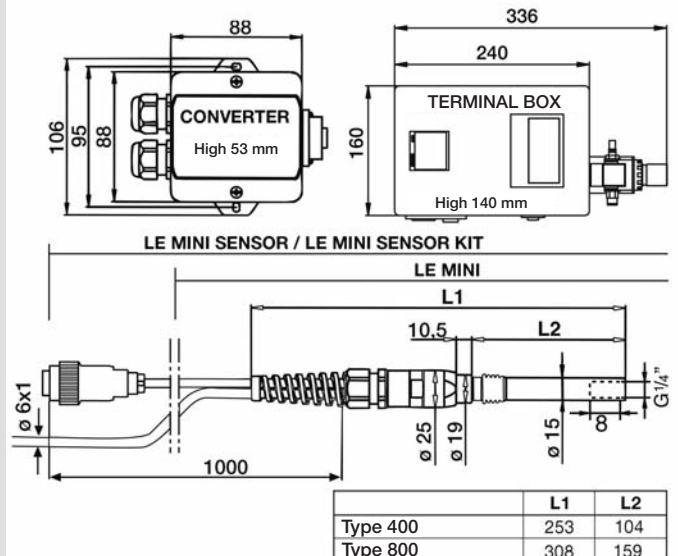


## Technical data

		LE MINI	LE MINI SENSOR	LE MINI SENSOR KIT
Temperature regulator integrated in the connection box				•
Integrated temperature probe			•	•
Thermoswitch for device production		•	•	•
Heating element protection			•	•
Analogue interface (passive) 4 – 20 mA			•	
Pressure reduction valve				•
Max. air outlet temperature °C	400 W	600	600	600
	800 W	750	750	750
Min. air flow l/min.	400 W	25	10	
	800 W	30	10	10
Max. supply air pressure Mpa		0.2	0.2	0.2
Weight Mini g	400 W	120	120	120
	800 W	150	150	150
Weight Converter g			190	
Weight Terminal box g				2150
Mark of conformity		CE	CE	CE
Approval mark		③	③	
Certification scheme		CCA	CCA	
Protection classe II		□	□	□




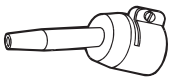

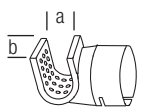
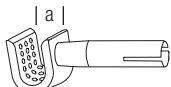



## Installation dimensions in mm



Voltage V ~		120	230	230
Power consumption W		400	400	800
<b>LE MINI</b>	Order no.	115.683	115.682	115.369
<b>LE MINI SENSOR</b>	Order no.	117.371	117.370	117.369
<b>LE MINI SENSOR KIT</b>	Order no.	128.536		125.416

## Accessories LE MINI and LE MINI SENSOR

(Ø 21.3 mm)

107.282		Flange connector, push-fit a = 40 mm
107.144 107.145		Round nozzle, push-fit Ø 5 mm Ø 10 mm
107.152		Round nozzle, push-fit Ø 12 mm
107.310 107.311		Sieve reflector, push-fit (a × b) 20 × 35 mm 50 × 35 mm
107.324		Sieve reflector, push-fit on round nozzle Ø 5 mm a = 10 mm
105.549 105.559 105.548 105.547		Wide slot nozzle, push-fit (a × b) 10 × 2 mm, angled 20 × 2 mm, length 55 mm 40 × 5 mm 50 × 8 mm
117.955		Nozzle adapter, screw-in for nozzles LE 700 > LE MINI > LE MINI SENSOR
129.407		2 m cable with plug and connection  > LE MINI SENSOR > LE MINI SENSOR KIT

### Special nozzles on request

If using non-Leister blowers, compressors and accessories no guarantee can be given by us