

# INDUCTION MOTOR

**MEISTER Series**

LEAD WIRE TYPE

70□ **15w**

**IH** 1PHASE 4POLE

## ■ PERFORMANCE DATA (DUTY : CONTINUOUS)

Motor Type	Output (W)	Voltage (V)	Freq. (Hz)	Rating				Stating	Condenser	
				Input (W)	Current (mA)	Torque (gf·cm)	Speed (rpm)	Torque (gf·cm)	(V)	(μF)
IH7PF15-10	15	1φ100	50	45	450	1200	1250	640	250	5.0
IH7PF15-11			60	45	450	950	1550	640		
IH7PF15-20	15	1φ200	50	45	220	1200	1250	640	450	1.2
IH7PF15-22			60	45	220	950	1550	640		
IH7PF15-1U	15	1φ100	50	45	450	1200	1250	640	250	5.0
			60	45	450	950	1550	640		
IH7PF15-2C	13	1φ220	50	37	180	1000	1250	700	450	1.0
	14	1φ240	50	44	180	1090	1250	900		

- Motor Type은 감속기 직결용인 피니언축으로 표시하였습니다. STRAIGHT축의 모터를 희망하시면 Motor Type의 PF를 S로 바꾸어 주문하십시오.
- 표시한 모터는 UL 또는 CE규격을 적용한 TP(Thermal Protect) Type입니다.
- For motor with straight shaft, please write S in place of PF in Motor Type.
- Motor Type in green screen represents the motors with TP(Thermal Protect) according to UL or CE regulation.

## ■ RATED TORQUE OF GEARED MOTOR

(unit : kg·cm)

Speed of Geared Motor	rpm	500	300	200	120	100	60	50	30	20	15	10
Gear Ratio	50Hz	3	5	7.5	12.5	15	25	30	50	75	100	150
	60Hz	3.6	6	9	15	18	30	36	60	90	120	180
IH7PF15 + 7H□FM		2.9	4.6	7.3	11	13	21	25	37	50	50	50
IH7PF15 + 7H□FB		2.9	4.6	7.3	11	13	21	25	37	50	50	50

- 표시한 감속비의 감속기는 출력축의 회전방향이 모터축의 회전방향과 반대로 됩니다.
- 감속모터의 회전수(Speed of Geared Motor)는 모터의 회전수 (50Hz에서 1500rpm, 60Hz에서 1800rpm)를 기준하여 산출하였습니다. 실사용시의 회전수는 부하의 크기에 따라 위의 표보다 2~15% 작게 됩니다.
- □부에는 감속비를 지정하여 주십시오. 감속기는 별도로 판매 됩니다.
- The rotation of geared motor in green screen is reverse of motor rotation.
- Speed of Geared Motor is based on motor synchronous speed. In normal operation, the speed will be 2 to 15 percent lower than above figure.
- When ordering gear head, please fill blank □ with gear ratio.

## OUTLINE DIMENSION



Fig.1 MOTOR(STRAIGHT SHAFT) IH7S15 WT 1.2kg

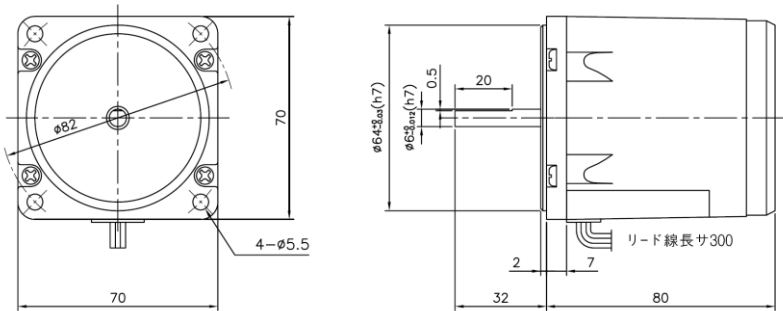
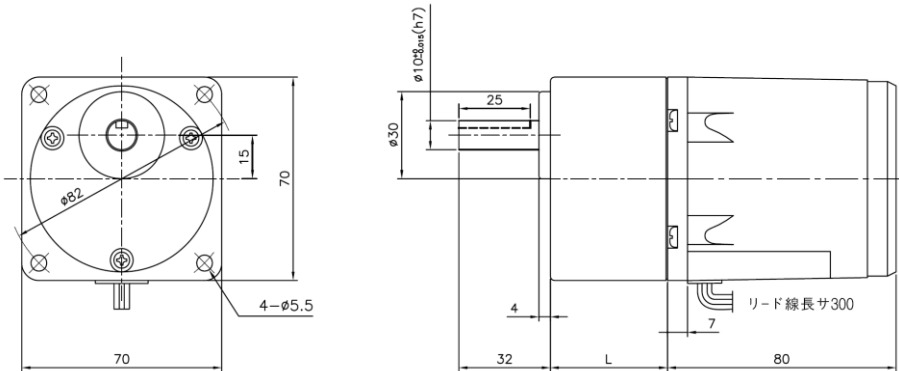
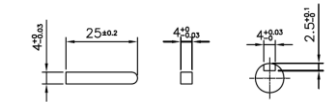


Fig.2 GEARED MOTOR IH7PF15 + 7H□FM(7H□FB) WT 1.2 + 0.5/0.6 kg

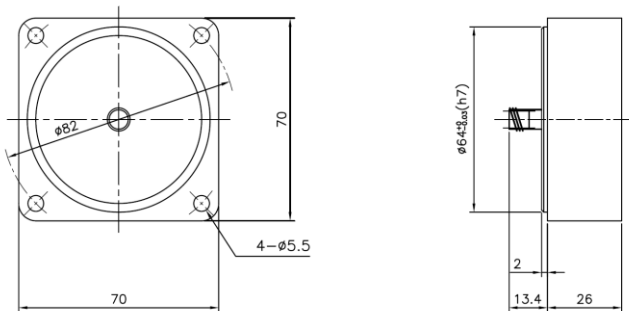


### KEY SPEC

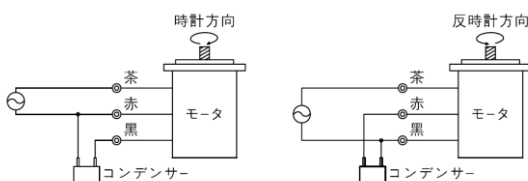


No	L(mm)	減速比	ボルト
01	31	1/3 ~1/18	M5×60
02	41	1/20~1/200	M5×70

Fig.3 DECIMAL GEAR HEAD 7H10X WT 0.25 kg



## WIRING DIAGRAM



- 회전방향은 모터의 샤프트 끝 쪽에서 볼 때의 회전방향 입니다.
- The direction of rotation is seen from the end of motor shaft.