

SPEED CONTROL MOTOR

MEISTER Series

90□ 60W

IHT/RHT

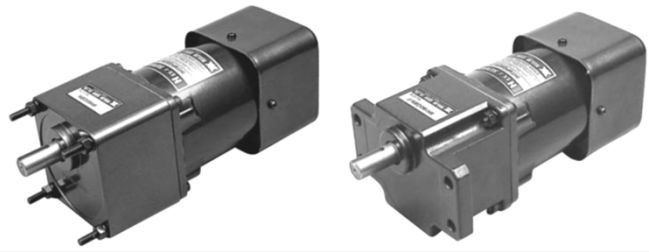
■ PERFORMANCE DATA (DUTY : CONTINUOUS)

Motor Type	Output (W)	Voltage (V)	Freq. (Hz)	Speed Range (rpm)	Rated Torque		Starting		Condenser	
					1200rpm (gf·cm)	90rpm (gf·cm)	Current (mA)	Torque (gf·cm)	(V)	(μF)
IHT9PF60-10	60	1φ100	50	90~1400	4400	1200	2500	4200	250	15.0
			60	90~1700	3700	1200	2400	4200		
IHT9PG60-11		1φ115	60	90~1700	3700	1200	2400	4200	250	15.0
IHT9PF60-20	60	1φ200	50	90~1400	4400	1200	1300	4200	450	4.0
			60	90~1700	3700	1200	1200	4200		
IHT9PG60-22		1φ220	60	90~1700	3700	1200	1200	4200	450	4.0
IHT9PF60-1U	60	1φ115	60	90~1700	3700	1200	2400	4200	250	12.0
IHT9PG60-1U										
IHT9PF60-2C	60	1φ220	50	90~1400	4400	1200	1200	4200	450	3.5
IHT9PG60-2C				1φ240	50	90~1700	4400	1200		

■ PERFORMANCE DATA (DUTY : 30 Min.)

Motor Type	Output (W)	Voltage (V)	Freq. (Hz)	Speed Range (rpm)	Rated Torque		Starting		Condenser	
					1200rpm (gf·cm)	90rpm (gf·cm)	Current (mA)	Torque (gf·cm)	(V)	(μF)
RHT9PF60-10	60	1φ100	50	90~1400	4400	1200	2900	4700	250	25.0
			60	90~1700	3700	1200	2800	4700		
RHT9PG60-11		1φ110	60	90~1700	3700	1200	2800	4700	250	25.0
RHT9PF60-20	60	1φ200	50	90~1400	4400	1200	1500	4700	450	6.0
			60	90~1700	3700	1200	1400	4700		
RHT9PG60-22		1φ220	60	90~1700	3700	1200	1400	4700	450	6.0
RHT9PF60-1U	60	1φ115	60	90~1700	3700	1200	2800	4700	250	20.0
RHT9PG60-1U										
RHT9PF60-2C	60	1φ220	50	90~1400	4400	1200	1500	4700	450	5.0
RHT9PG60-2C				1φ240	50	90~1700	4400	1200		

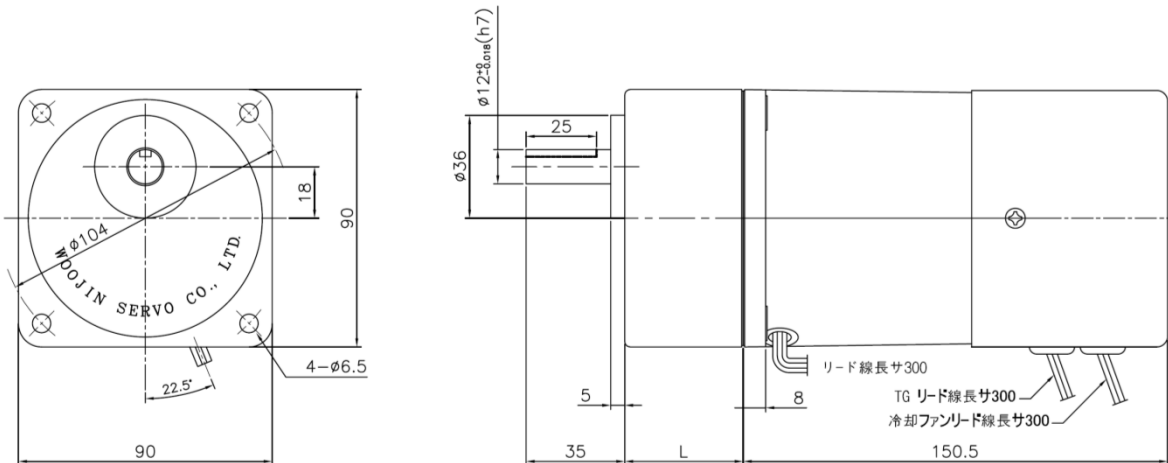
- Motor Type은 감속기 직결용인 피니언축으로 표시하였습니다. STRAIGHT축의 모터를 희망하시면 Motor Type의 PF를 S로 바꾸어 주문하십시오.
- 표시한 모터는 UL 또는 CE규격을 적용한 TP(Thermal Protect) Type입니다.
- For motor with straight shaft, please write S in place of PF in Motor Type.
- Motor Type in green screen represents the motors with TP(Thermal Protect) according to UL or CE regulation.



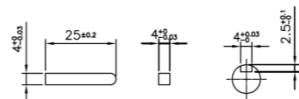
■ OUTLINE DIMENSION

Fig.1 GEARED MOTOR

IHT9PF60(RHT9PF60) + 9H□FM(9H□FB) WT 3.1 + 0.8/0.9 kg

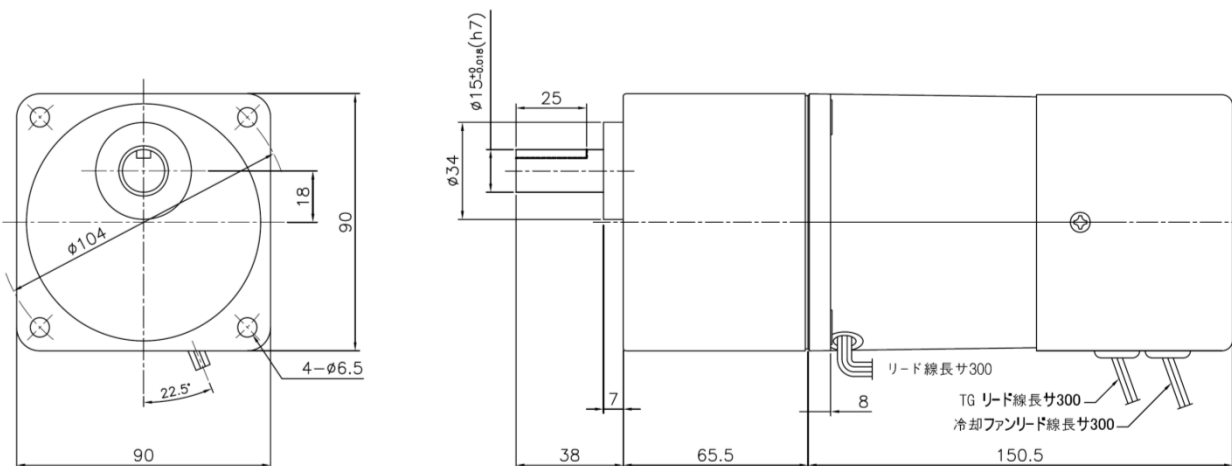


▼ KEY SPEC

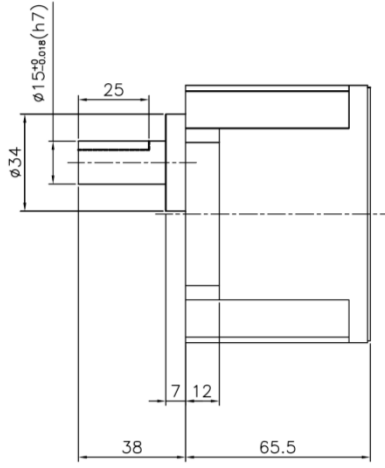
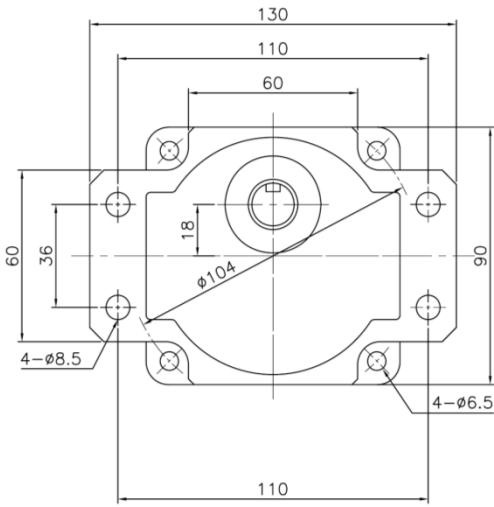


No	L(mm)	減速比	ボルト
01	42	1/3 ~ 1/20	M6 × 70
02	60	1/25 ~ 1/200	M6 × 90

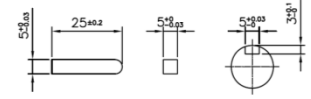
IHT9PG60(RHT9PG60) + 9H□GB WT 3.1 + 1.5 kg



9H□GBF WT 1.5 kg



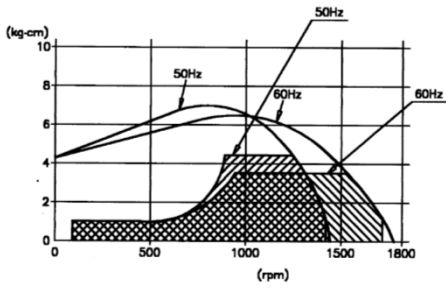
▼ KEY SPEC



タイプ	ボルト
9H□GGB	M6×90
9H□GBF	M6×25

■ SPEED-TORQUE CURVE

IHT9PF60(IHT9PG60)



RHT9PF60(RHT9PG60)

