

SPEED CONTROL MOTOR

MEISTER Series

90□ 120w

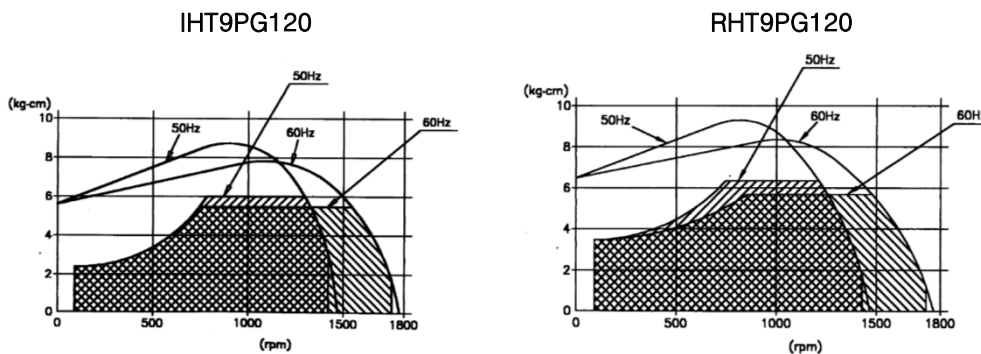
IHT

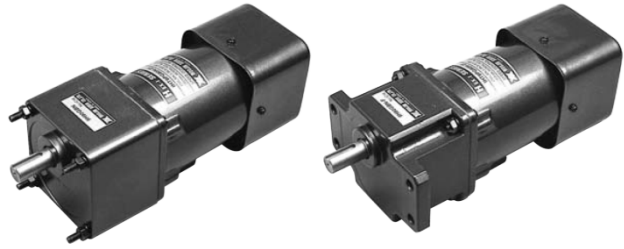
■ PERFORMANCE DATA (DUTY : CONTINUOUS)

Motor Type	Output (W)	Voltage (V)	Freq. (Hz)	Speed Range (rpm)	Rated Torque		Starting		Condenser	
					1200rpm (gf·cm)	90rpm (gf·cm)	Current (mA)	Torque (gf·cm)	(V)	(μF)
IHT9PG120-10	120	1∅100	50	90~1400	8000	3000	3200	6000	250	25.0
IHT9PG120-11			60	90~1700	7500	3000	3200	6000		
IHT9PG120-20	120	1∅200	50	90~1400	8000	2500	1600	5500	450	6.0
IHT9PG120-22			60	90~1700	7500	2500	1600	5500		
IHT9PG120-1U	120	1∅115	60	90~1700	7500	3000	3200	6000	250	20.0
IHT9PF120-2C	120	1∅220	50	90~1700	8000	3000	1600	6000	450	5.0
		1∅240	50	90~1400	8000	3000	1600	6000		

- Motor Type은 감속기 직결용인 피니언축으로 표시하였습니다. STRAIGHT축의 모터를 희망하시면 Motor Type의 PG를 S로 바꾸어 주문하십시오.
- 표시한 모터는 UL 또는 CE규격을 적용한 TP(Thermal Protect) Type입니다.
- For motor with straight shaft, please write S in place of PG in Motor Type.
- Motor Type in green screen represents the motors with TP(Thermal Protect) according to UL or CE regulation.

■ 토크-스피드 특성곡선

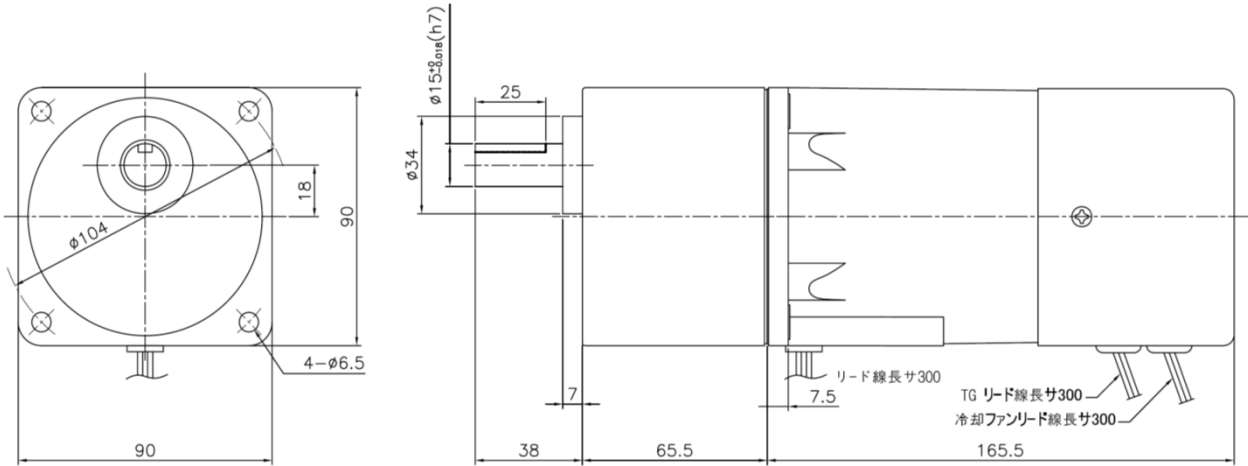




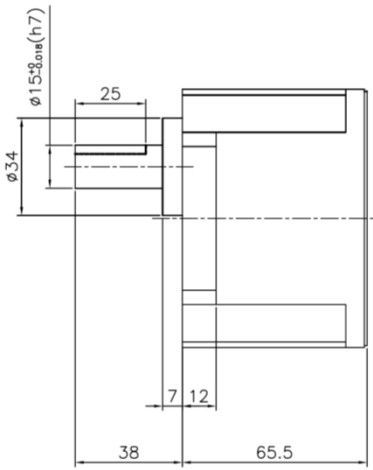
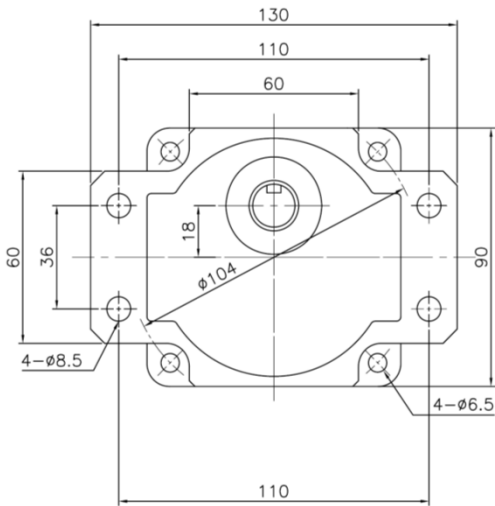
■ OUTLINE DIMENSION

Fig.1 GEARED MOTOR

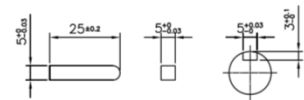
IHT9PG120(RHT9PG120) + 9H□GB WT 3.5 + 1.5 kg



9H□GBF WT 1.5 kg



▼ KEY SPEC



タイプ	ボルト
9H□GBB	M6×90
9H□GBF	M6×25