

# N13A MADE TO ORDER

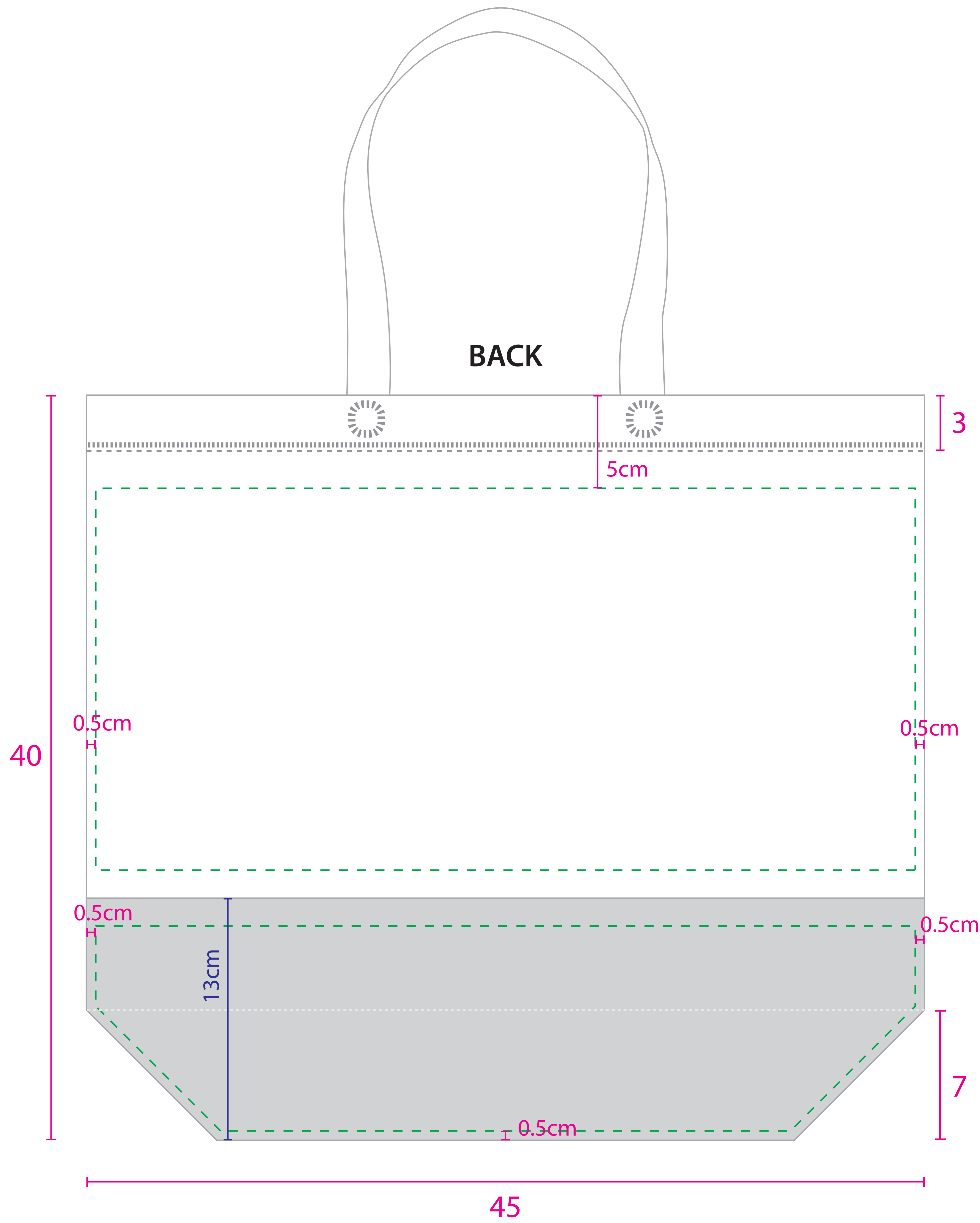
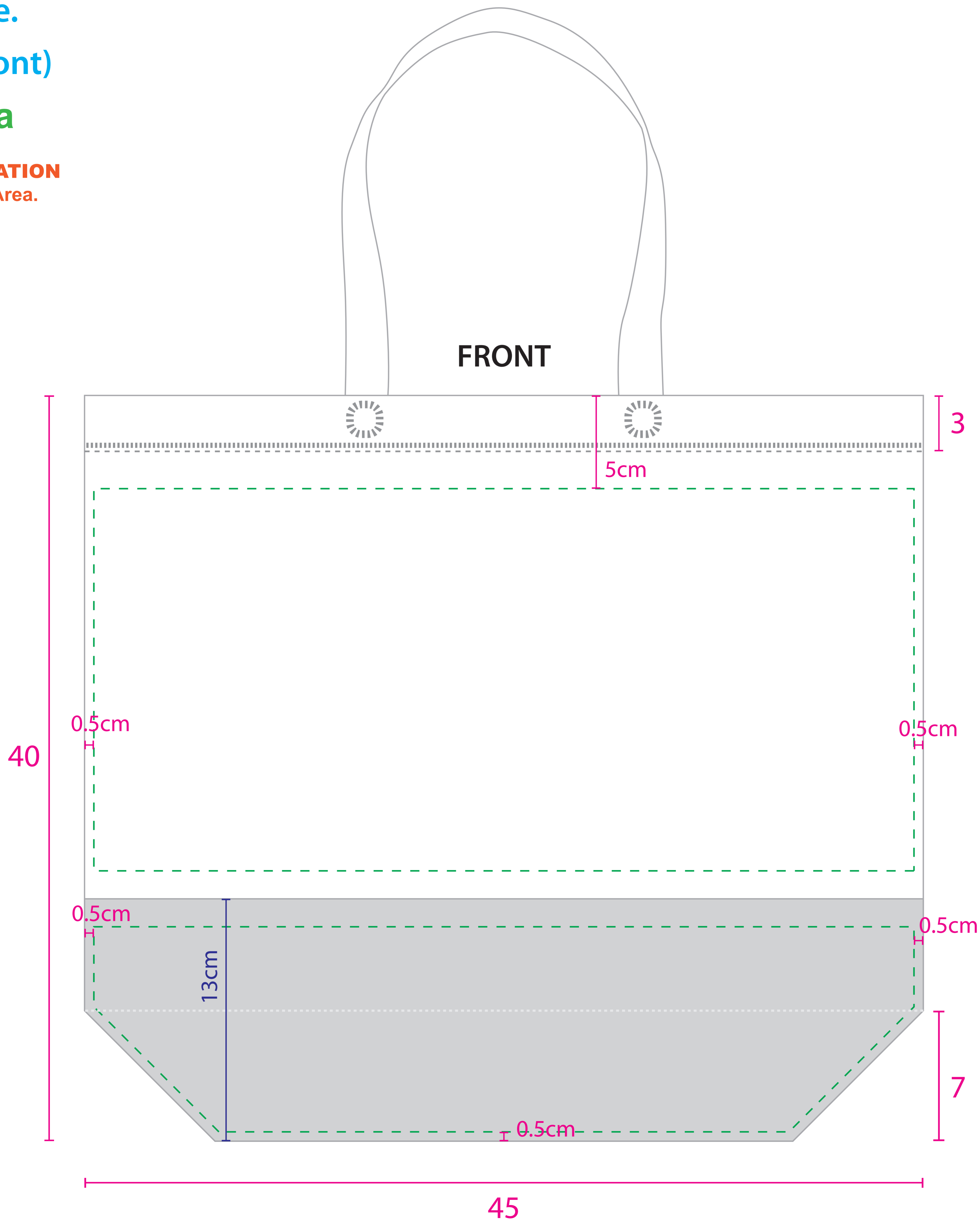
# TERMS

- \* **Artwork must in Vector file.**
- \* **Expend all fonts (No live font)**

## Printable Area

**Please make sure all the  
IMPORTANT INFORMATION  
are within the Printable Area.**

FABRIC COLOR			
	BLACK		MILO GREEN
	WHITE		DARK GREEN
	BEIGE		TURQUOISE
	YELLOW		CYAN
	ORANGE		ROYAL BLUE
	DARK ORANGE		NAVY BLUE
	MAGENTA		DARK PURPLE
	MULBERRY		LIGHT BROWN
	RED		DARK BROWN
	MAROON		GREY
	GREEN		



# Printing Guideline:

1. Font size must be not be smaller than 0.4cm

Example:      **Enterprise** 4mm

2. Font thickness must be at minimum for:

Normal Printing

**He** 0.4mm      **e** 0.6mm

Invert Printing

**He** 0.6mm      **e** 0.8mm

Normal Printing

**TM** 0.4mm      **®** 0.4mm

Invert Printing

**TM** 0.6mm      **®** 0.8mm

3. Line thickness must be at minimum for:

Normal Printing

**\_\_\_\_\_** 0.4mm

Invert Printing

**\_\_\_\_\_** 0.6mm

Remark: Add on 0.2mm for each measurement if the printing color is : Gold, Silver or White.