

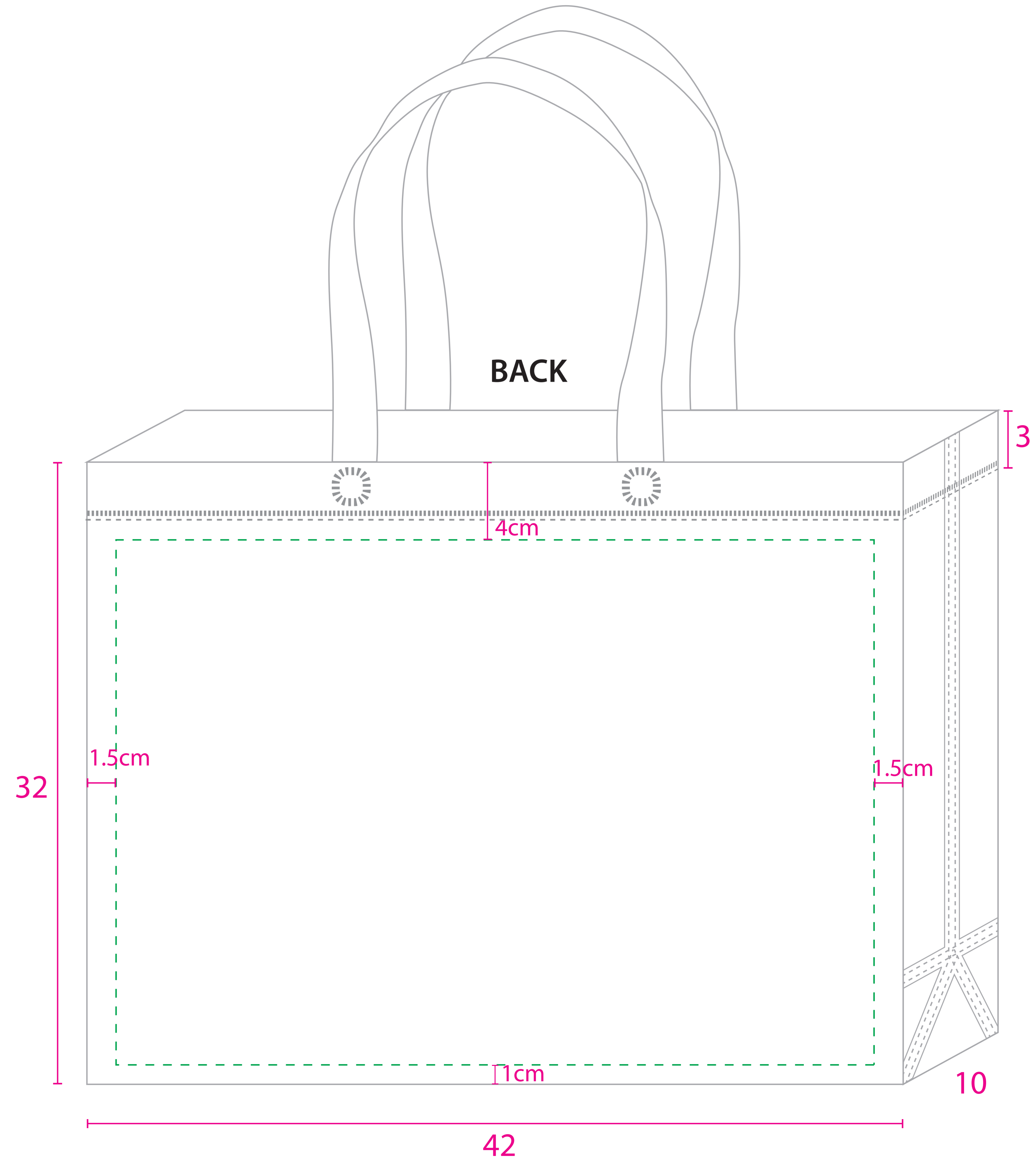
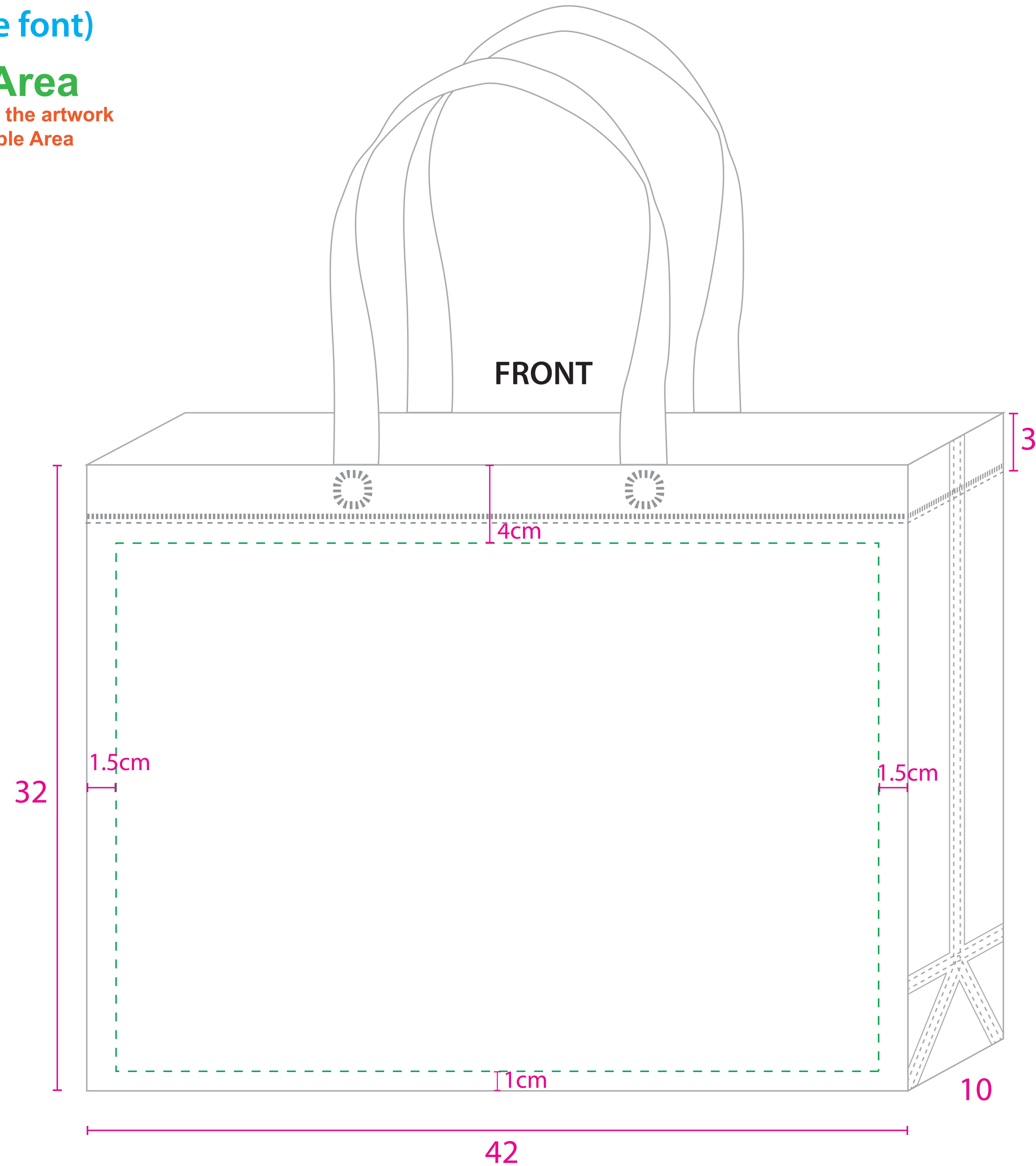
NH31 MADE TO ORDER

TERMS

- * Artwork must in Vector file.
- * Expend all fonts (No live font)

* **Printable Area**
Please make sure all the artwork are within the Printable Area

HANDLE COLOR			
	BLACK		MILO GREEN
	WHITE		DARK GREEN
	BEIGE		TURQUOISE
	YELLOW		CYAN
	ORANGE		ROYAL BLUE
	DARK ORANGE		NAVY BLUE
	MAGENTA		DARK PURPLE
	MULBERRY		LIGHT BROWN
	RED		DARK BROWN
	MAROON		GREY
	GREEN		



Printing Guideline:

1. Font size must be not be smaller than 0.4cm

Example: **Enterprise** 4mm

2. Font thickness must be at minimum for:

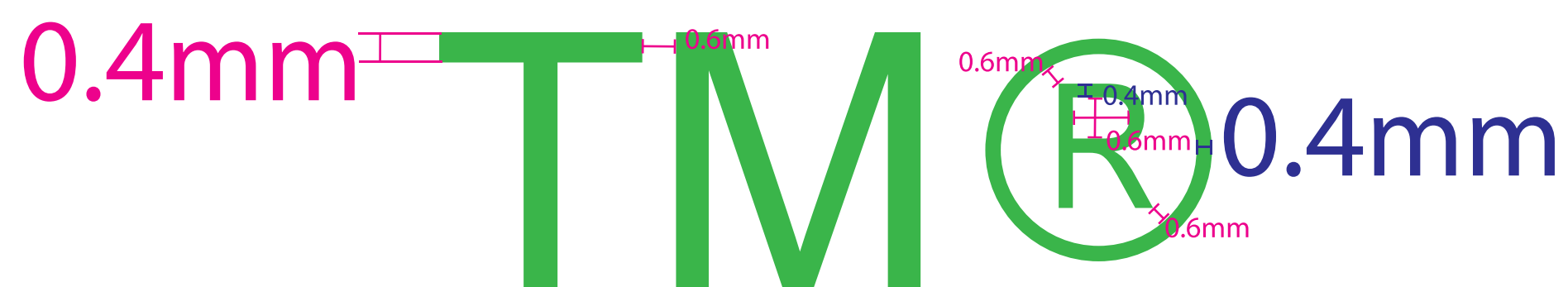
Normal Printing



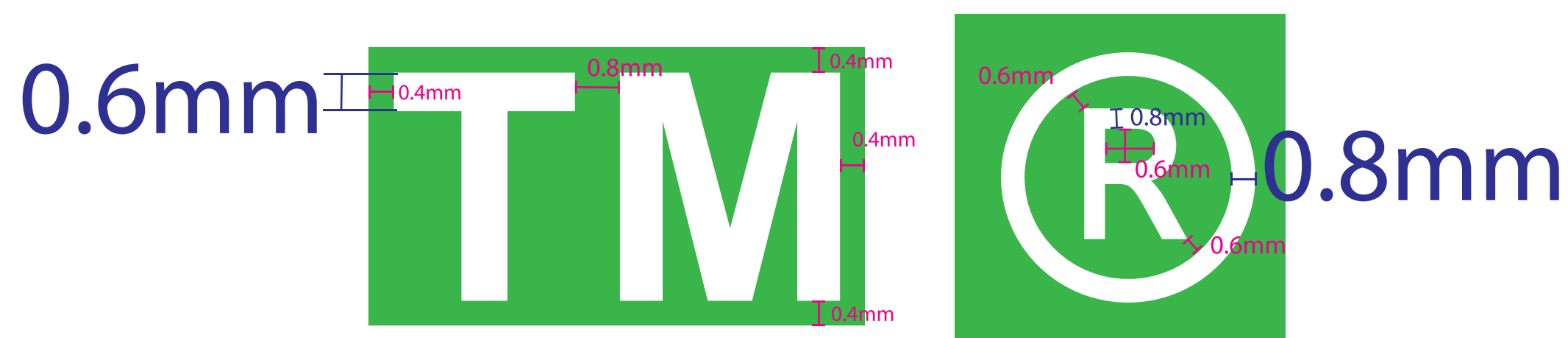
Invert Printing



Normal Printing



Invert Printing



3. Line thickness must be at minimum for:

Normal Printing



Invert Printing



Remark: Add on 0.2mm for each measurement if the printing color is : Gold, Silver or White.