

## F22Series - 192mm middle size pipe size 1/2"-3/4" **F22 series**



### Product Features · Use

- Designed for use with highly corrosive solutions.
- Equipped with an inductor, which confirms the pipeline's current capacity by means of detecting the floating migration. The inductor can be connected instruments or computers and is often used as part of the control or alarm system.
- Patented dual-indicator design for easy and clear flow range management.
- Laser engraved degree scales provide better readability and longer life.
- Available in customizable units, temperature, and molecular weight.
- Each batch of flow meters will be calibrated before delivery for our best precision guarantee.

### Standard Specs

- Model: F22PSU, F22 w/ Inductor PSU
  - Adaptor Size: 1/2", 3/4"
  - Applicable Fluid: Liquid (Highly corrosive)
  - Flow direction: From the bottom up
  - Engraved degree scales: Laser engraved degree scales
  - Fluid Temperature: 50°C (Standard: UPVC adaptor)  
60°C (PP adaptor)
  - Working Pressure: 6.0kg/cm<sup>2</sup>
  - Full Scale Accuracy: ±5% F.S.
  - Product Material
    - Body - PSU
    - Float - PP, PVDF, Telfone, PVC
    - Guide Rod - No
    - Guide Rod Bottom - PP
    - Adaptor - Welding Type: UPVC
      - Male, Female Thread: UPVC, PP
      - Butt-fusion Adaptor: PP
    - Union Nuts - UPVC
    - O-ring- EPDM, VITON
  - Adaptor Material
    - Welding Type, Male Thread, Female Thread, Butt-fusion Adaptor
- ※BSPT is standard thread type. NPT is available for custom order.

### Scale Range

Product Code	Scale Range*	Standard gravity
F22-3LPM PVC float	0.3-3.0 L/min	1.0
F22-5LPM PVDF float	0.5-5.0 L/min	1.0
F22-8LPM Teflon float	0.8-8.0 L/min	1.0
F22-10LPM Teflon float	1.0-10 L/min	1.0
F22-500LPH Teflon float	50-500 L/h	1.0
F22-800LPH PVDF float	80-800 L/h	1.0
F22 w/ inductor-6LPM PP float	0.5-6.0 L/min	1.0
F22 w/ inductor-11LPM PVDF float	1.0-11 L/min	1.0

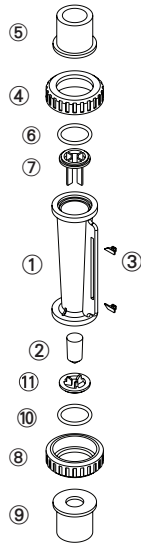
※ Liquid flow meters are calibrated for 20°C water.

### Maximum working temperature for different adaptor materials

Adaptor Types	Maximum working temperature materials	
	~ 50°C	~ 60°C
Welding Type	UPVC	-
Male / Female Thread	UPVC	PP
Butt-fusion Adaptor	PP	PP
Panel Elbow Male Thread	UPVC	-

※ When maximum working temperature is over 50°C, the material for union nuts/ guide rod bottom and O-ring have to be PSU and VITON.

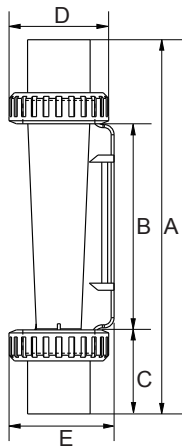
## Parts Material



No.	Series	Material (Main material)* 1			
		1	2	3	4
1	Body	PSU	PSU	PSU	PSU
2	Float	PP/ PVDF / Teflon	PP/ PVDF / Teflon	PP/ PVDF / Teflon	PP/ PVDF / Teflon
3	Guide Rod	ABS	ABS	ABS	ABS
4,8	Pointer	UPVC	UPVC	UPVC	PSU
5,9	Adaptor	UPVC	UPVC	PP* 2	PSU* 3
6,10	O-ring	EPDM	VITON	VITON	VITON
7,11	Guide Rod Bottom	PP	PP	PP	PP

- ※ 1. Material for different parts is optional for each flowmeter.
- ※ 2. For thread and welding adaptor only.
- ※ 3. For thread adaptor only.

## Parts Size



Adaptor Spec	A	B	C	D	E
3/4"Female Thread	191	104	43.5	51	54
3/4"Male Thread	188	104	42	51	54
3/4"CNS	194	104	45	51	54
3/4"ASTM	195	104	45.5	51	54
3/4"JIS	194	104	45	51	54
3/4"DIN	194	104	45	51	54
1/2"Male Thread	182	104	39	51	54
1/2"Female Thread	191	104	43.5	51	54
1/2"CNS	184	104	40	51	54
1/2"ASTM	184	104	40	51	54
1/2"JIS	183	104	39.5	51	54
1/2"DIN	187	104	41.5	51	54
PP OD20 ID15.3	184	104	40	51	54

Unit: mm

## Specification inquiry (F22)

※ Contact us with below information.

- Fluid - \_\_\_\_\_
- Specific gravity -  Standard-1.0  Other \_\_\_\_\_
- Pressure -  Standard-6.0kg/cm<sup>2</sup>  Other \_\_\_ kg/cm<sup>2</sup>
- Temperature -  Normal temperature  Other \_\_\_ °C
- Scale Range - \_\_\_\_\_ L/min ~ \_\_\_\_\_ L/min
- Adaptor Size -  3/4" JIS  
 Other \_\_\_\_\_
- Adaptor Material
  - Welding Type  Male Thread
  - Female Thread  Butt-fusion Adaptor
  - Panel Elbow Thread  Other \_\_\_\_\_
- Inductor -  Yes  No
- Other - \_\_\_\_\_