

Modelling the Effect of a Novel Auto-Dissemination Trap on the Spread of Dengue in Shah Alam and Malaysia

Y. Liang¹, M. N. Ahmad Mohiddin², R. Bahauddin²,
F. O. Hidayatul², W. A. Nazni³, H. L. Lee⁴
and D. Greenhalgh¹

¹Department of Mathematics and Statistics,

University of Strathclyde, Glasgow G1 1XH, U.K.

²School of Diagnostic and Applied Health Sciences,
Faculty of Health Sciences, Universiti Kebangsaan Malaysia,
Jalan Raja Muda A. Aziz, 50300 Kuala Lumpur, Malaysia.

³Medical Entomology Unit, Institute for Medical Research,
Jalan Pahang, 50588 Kuala Lumpur, Malaysia.

⁴Vector Borne Disease Control Branch, Disease Control Division,
Ministry of Health, Putrajaya, Malaysia.

Abstract

In this paper, we will start off by introducing the classical Ross-Macdonald model for vector borne diseases which we use to describe the transmission of dengue between humans and *Aedes* mosquitoes in Shah Alam, which is a city and the state capital of Selangor, Malaysia. We will focus on analysing the effect of using the Mosquito Home System (MHS), which is an example of an auto-dissemination trap, in reducing the number of dengue cases by changing the Ross-Macdonald model. By using the national dengue data from Malaysia, we are able to estimate λ which represents the initial growth rate of the dengue epidemic and this allows us to estimate the number of mosquitoes in Malaysia.

A mathematical expression is also constructed which allows us to estimate the potential number of breeding sites of *Aedes* mosquitoes. By using the data available from the MHSs trial carried out in Section 15 of Shah Alam, we included the potential effect of the MHS into the dengue model and thus modelled the impact that the MHS has on the spread of dengue within the trial area. We then extended our results to analyse the effect of the MHSs on reducing the number of dengue cases in the whole of Malaysia. A new model was constructed with a basic reproduction number, $R_{0,Mala}^{MHS}$, which allows us to identify the required MHSs coverage needed to achieve extinction in Malaysia. Numerical simulations and tables of results were also produced to illustrate our results.

Key words: Dengue, auto-dissemination trap, Mosquito Home System, ordinary

differential equations, delayed model, *Aedes* mosquitoes, numerical simulations, Malaysia, Shah Alam, extinction, basic reproduction number.

1 Introduction

Epidemics of infectious diseases have been a constant threat towards our society. In the past, Europe suffered from 25 million deaths out of a population of 100 million due to the Black Death [4]; Russia suffered from about 25 million cases of typhus with a death rate of about 10 percent, whilst smallpox wiped out half of the population of the Aztecs of three and a half million in 1520 [2]. Although in the 21st century, many diseases such as smallpox no longer pose a threat towards mankind, there is still a high proportion of the population that is under threat of diseases such as malaria and dengue. According to the World Health Organization, every year there are around 50-100 million dengue infections where at least 100 countries have a dengue epidemic [30]. Dengue is a vector borne disease which is transmitted by the *Aedes* mosquitoes which are also responsible for the transmission of yellow fever and the zika virus [30, 32].

Malaysia, a country in the Southeast of Asia, has consistently been reported to have a high number of dengue cases due to its tropical climate. Between 2014 to 2016, Malaysia had around 330,891 reported dengue cases with around 788 dengue related deaths with a high incidence rate of 396.4 per 100,000 population in 2015 causing it to suffer from serious economic and health burdens. In Packierisamy et al. [23], it is estimated that in 2010, it had cost Malaysia around USD \$73.45 million in dengue related vector control which was around USD \$2.63 per capita population. The standard and traditional way of battling against dengue is by using space spraying (chemical fogging), however the effect tends to reduce over time [14]. In addition, over time, it is possible for the *Aedes* mosquitoes which survive to develop resistance to the chemical that is used in space spraying [11] thus reducing the effectiveness of spraying in controlling the spread of dengue. An alternative way by which we can combat dengue is by using the auto-dissemination trap [14], which is a more proactive method as the trap contains a special solution which will lure the female *Aedes* mosquitoes to lay eggs inside the trap. Most importantly, the eggs that are laid will get killed off by the solution inside thus preventing them from hatching into adult *Aedes* mosquitoes to transmit the disease. As a result, the auto-dissemination trap will essentially reduce the *Aedes* population size.

In this paper, we will modify the classic Ross-Macdonald dengue model [16] to examine the effect of such an auto-dissemination trap called the Mosquito Home System (MHS) in controlling the spread of dengue. The MHSs data used in this paper are collected from the site of the trial that took place in an environment consisting of shop houses in Section 15 of Shah Alam, the state capital of the highly dengue infected area, Selangor, Malaysia.

This paper is arranged as follows: In Section 2, we will introduce the classical Ross-Macdonald model as well as the basic reproduction number. We then modify the Ross-Macdonald model to a twelve differential equations model which describes the spread of dengue between humans and *Aedes* mosquitoes both in Malaysia

The simulation data used to support the findings of this study are available on request from the corresponding author.

and in the trial site in Section 15 of Shah Alam, Selangor, Malaysia. We will also construct a list of different biting proportions corresponding to different times spent outside the trial site. In Section 3, we will perform thorough analysis on the effect of having different levels of MHSs on the number of dengue cases in the trial site in Shah Alam. In Section 4, we extend our results from the trial site in Shah Alam to the whole of Malaysia. A new improved model is constructed with a new basic reproduction number. The extinction condition is also derived. Lastly, in Section 5, we summarise our results. Numerical simulations produced using Euler's method and tables of results are shown throughout this paper.

2 The Modified Ross-Macdonald Dengue Model with the Effect of Auto-dissemination Trap

Let us start by introducing the delayed Ross-Macdonald SIR model for dengue used in [16, 21] which our modified dengue model will be based on:

$$\begin{aligned}
\frac{dS_H(t)}{dt} &= -abI_v(t)\frac{S_H(t)}{N_H} - \mu_H S_H(t) + \mu_H N_H, \\
\frac{dI_H(t)}{dt} &= abI_v(t)\frac{S_H(t)}{N_H} - (\mu_H + \gamma)I_H(t), \\
\frac{dR_H(t)}{dt} &= \gamma I_H(t) - \mu_H R_H(t), \\
\frac{dS_v(t)}{dt} &= -acS_v(t)\frac{I_H(t)}{N_H} - \mu_v S_v(t) + \mu_v N_v, \\
\frac{dL_v(t)}{dt} &= acS_v(t)\frac{I_H(t)}{N_H} - \mu_v L_v(t) - acS_v(t - \tau)\frac{I_H(t - \tau)}{N_H}e^{-\mu_v\tau}, \\
\frac{dI_v(t)}{dt} &= acS_v(t - \tau)\frac{I_H(t - \tau)}{N_H}e^{-\mu_v\tau} - \mu_v I_v(t),
\end{aligned} \tag{2.1}$$

with initial conditions $S_H(0), I_H(0)$ and $R_H(0)$. $S_H(t), I_H(t)$ and $R_H(t)$ represent respectively the susceptible, infected and recovered humans, while $S_v(0), L_v(0)$ and $I_v(0)$ denote the initial conditions for $S_v(t), L_v(t)$ and $I_v(t)$ which represent respectively the susceptible, latent and infected mosquitoes. Note that $N_H = S_H + I_H + R_H$ denotes the total population size for humans and $N_v = S_v + L_v + I_v$ represents the total population for *Aedes* mosquitoes, both constant. The biological meanings of the parameter values used in Equation (2.1) are given in Table 1.

Note that the delayed Ross-Macdonald SIR model only includes the extrinsic incubation period in mosquitoes, whereas actually sometimes an intrinsic incubation period in humans is also included in the model. However, it is important to note that much work has already been done on dengue models with just extrinsic incubation period only [1, 3, 8, 17, 21, 22, 25]. Therefore, we hope that the results mentioned in this paper will be able to contribute to this research area.

There are two different conventions for defining the basic reproduction number R_0 in host-vector models. In this paper we are using the convention that a generation of disease transmission is human to human disease transmission. Thus R_0 is defined as the expected number of secondary cases in humans caused by a single newly infected human entering a disease-free population at equilibrium [16, 17, 21, 22, 25, 27]. A secondary case is defined as a person directly infected by a mosquito

Parameter values	Biological meanings
a	<i>Aedes</i> mosquitoes biting rate
b	Probability of transmission of dengue when an infectious mosquito bites a susceptible human
c	Probability of transmission of dengue when a susceptible mosquito bites an infectious human
N_H	Human population
μ_H	Per capita human mortality rate
γ	Per capita human recovery rate
μ_v	Per capita mortality rate for <i>Aedes</i> mosquitoes
N_v	<i>Aedes</i> mosquitoes population
τ	Dengue extrinsic incubation period

Table 1: Parameter values given in Equation (2.1).

which was directly infected by the original infected individual. However the Next Generation Matrix approach [6, 24, 27, 28, 29, 31] effectively regards a generation of disease transmission to be either human to mosquito transmission or mosquito to human transmission. With this approach the new basic reproduction number, \tilde{R}_0 say, is the square root of our R_0 . This \tilde{R}_0 has the same threshold value as the one which we have derived (i.e. $\tilde{R}_0 > 1$ if and only if $R_0 > 1$, and $\tilde{R}_0 < 1$ if and only if $R_0 < 1$).

For example if we take the delayed Ross-MacDonald SIR model for dengue given by equations (2.1), if a newly infectious human enters a disease-free population at equilibrium he or she will remain infectious for time

$$\frac{1}{\mu_H + \gamma},$$

and during this time infect

$$\frac{N_v}{N_H} \frac{ac}{\mu_H + \gamma} = \frac{mac}{\mu_H + \gamma}$$

mosquitoes. Here $m = N_v/N_H$, represents the number of *Aedes* mosquitoes per human. A fraction $e^{-\mu_v\tau}$ of these survive the latent period to become infectious, thus there are

$$\frac{mac}{\mu_H + \gamma} e^{-\mu_v\tau}$$

infectious mosquitoes.

Using a similar argument each newly infectious mosquito directly infects

$$\frac{ab}{\mu_v}$$

humans. Thus

$$R_0 = \frac{mac}{\mu_H + \gamma} e^{-\mu_v\tau} \frac{ab}{\mu_v}.$$

Therefore

$$R_0 = \frac{ma^2bce^{-\mu_v\tau}}{\mu_v(\mu_H + \gamma)}. \quad (2.2)$$

Note also that our differential equation would reduce to a standard SIR-SI case if $\tau = 0$ in Equation (2.2).

On the other hand using the Next Generation Matrix approach there are three types of infectious individuals: namely infectious humans ($i = 1$), latent mosquitoes ($i = 2$), and infectious mosquitoes ($i = 3$). The Next Generation Matrix is defined as the matrix $\mathbf{M} = \{M_{ij} : i = 1, 2, 3, j = 1, 2, 3\}$ where M_{ij} is defined to be the number of secondary cases in infectious state i caused by a single newly infected individual in infectious state j entering a disease-free population at equilibrium. Hence

$$\mathbf{M} = \begin{pmatrix} I_H & L_v & I_v \\ 0 & 0 & \frac{ab}{\mu_v} \\ \frac{mac}{\mu_H + \gamma} & 0 & 0 \\ \frac{mac}{\mu_H + \gamma}e^{-\mu_v\tau} & 0 & 0 \end{pmatrix} \begin{matrix} I_H \\ L_v \\ I_v \end{matrix}.$$

It is straightforward to show that the eigenvalues of this matrix are $\omega = 0$ and $\omega = \pm\sqrt{R_0}$ so the basic reproduction number calculated using the Next Generation Matrix method is the largest absolute value of these which is $\tilde{R}_0 = \sqrt{R_0}$.

The estimation of λ , the initial per capita growth rate of the dengue epidemic is outlined in detail in [8] but we summarise it here for convenience. It is easy to obtain values for some of the quantities in Equation (2.1). For example $1/\gamma$ is the average human infectious period, $1/\mu_v$ represents the average mosquito lifetime and $1/\mu_H$ is the average human lifetime. However the total number of mosquitoes, N_v , is more difficult to estimate. At the start the number of dengue cases is expected to grow exponentially like $e^{\lambda t}$. We therefore estimate λ by fitting a function $Ae^{\lambda t}$, where A is a constant, to the initial numbers of infected humans. At the start, where this fitting was done, the initial number of infected individuals ranged from 390 to 2,468. In other words the infected fraction of the total Malaysian population of 32,000,000 [18] ranged from 1.22×10^{-5} to 7.71×10^{-5} . In this case, the number of infected individuals, latent mosquitoes and infected mosquitoes behave in a similar manner where $I_H(t)$, $L_v(t)$ and $I_v(t)$ grow exponentially at the same rate over a short period of time, namely $I_H(t) \approx I_H(0)e^{\lambda t}$, $L_v(t) \approx L_v(0)e^{\lambda t}$ and $I_v(t) \approx I_v(0)e^{\lambda t}$ [12], where $I_H(0)$, $L_v(0)$ and $I_v(0)$ are the initial conditions for the number of infected individuals, latent mosquitoes and infected mosquitoes respectively.

As described in [8], by plotting an exponential curve fitted to the real dengue cases in humans in Malaysia (available in [15]) we obtain the fitted initial per capita growth rate λ of the dengue cases. We obtain $\lambda = 0.00053/day$.

From this λ estimate we can find the basic reproduction number R_0 , and from R_0 we can estimate N_v . (Recall that R_0 represents the expected number of secondary cases in humans that will arise from a single infected person entering a disease-free population at equilibrium. Alternatively R_0 can be thought of as the expected number of secondary cases in mosquitoes that will arise from a single infected mosquito entering a disease-free population at equilibrium.)

The essential method which we shall use follows the one outlined in the Appendix of [22]. In [22] λ is estimated from the initial phase of the epidemic and then R_0 is estimated from the parameters λ , μ_H , μ_v , τ and γ , all of which we know either from data or the literature. Equation (2.5) gives our R_0 estimate for the model (2.1) obtained using this technique. Equation (2.2) is found directly using the model (2.1) and gives R_0 in terms of the model parameters. We chose to estimate R_0 using Equation (2.5) rather than Equation (2.2) because it is difficult to estimate N_v , the total number of mosquitoes in Malaysia, hence difficult to estimate $m = N_v/N_H$, the number of mosquitoes per human.

We obtain Equation (2.5) by following the argument in the Appendix of [22]. However we observe that in the second equation in both of Equation (9) and (10) in [22] the argument of i_H should be $t - \tau$ as opposed to t . Noting this, then the argument for that model does not give

$$R_0 = \left(1 + \frac{\lambda^2 + \lambda(\mu + \gamma)}{\mu\gamma} \right), \quad (2.3)$$

as stated in [22] but instead

$$R_0 = \left(1 + \frac{\lambda^2 + \lambda(\mu + \gamma)}{\mu\gamma} \right) e^{\lambda\tau}, \quad (2.4)$$

as given in [8]. The μ in Equations (2.3) and (2.4) is the per capita mosquito death rate, which in our model is denoted μ_v .

We apply the same method to our model. Our model includes extra parameters, namely the disease transmission probability to an uninfected mosquito from an infectious human at each bite, which is c , and the death rate per human, which is μ_H . We find that for our model

$$R_0 = \frac{(\lambda + \mu_v)(\lambda + \mu_H + \gamma)e^{\lambda\tau}}{(\mu_H + \gamma)\mu_v}. \quad (2.5)$$

In this paper, our aim is to analyse the effect of using the MHSs on reducing the number of dengue cases in the trial site in Section 15 of Shah Alam, Selangor, Malaysia and thus later extend the analysis to the whole of Malaysia. Note that the trial site consists of fifteen blocks of shop houses. Therefore, we will modify the six differential equations delayed dengue model to a twelve differential equations dengue model where six of them describe the disease dynamics in Malaysia while the other six represent the dynamics of dengue within the trial site in Shah Alam with the effect of MHSs. The modified dengue model is given as follows:

$$\begin{aligned}
\frac{dS_{H_1}(t)}{dt} &= -abI_{v_1}(t)\frac{S_{H_1}(t)}{N_{H_1}} - \mu_H S_{H_1}(t) + \mu_H N_{H_1}, \\
\frac{dI_{H_1}(t)}{dt} &= abI_{v_1}(t)\frac{S_{H_1}(t)}{N_{H_1}} - (\mu_H + \gamma)I_{H_1}(t), \\
\frac{dR_{H_1}(t)}{dt} &= \gamma I_{H_1}(t) - \mu_H R_{H_1}(t), \\
\frac{dS_{v_1}(t)}{dt} &= -acS_{v_1}(t)\frac{I_{H_1}(t)}{N_{H_1}} - \mu_v S_{v_1}(t) + \mu_v N_{v_1}, \\
\frac{dL_{v_1}(t)}{dt} &= acS_{v_1}(t)\frac{I_{H_1}(t)}{N_{H_1}} - \mu_v L_{v_1}(t) - acS_{v_1}(t - \tau)\frac{I_{H_1}(t - \tau)}{N_{H_1}}e^{-\mu_v \tau}, \\
\frac{dI_{v_1}(t)}{dt} &= acS_{v_1}(t - \tau)\frac{I_{H_1}(t - \tau)}{N_{H_1}}e^{-\mu_v \tau} - \mu_v I_{v_1}(t),
\end{aligned} \tag{2.6}$$

$$\begin{aligned}
\frac{dS_{H_2}(t)}{dt} &= -ab\left(P\frac{I_{v_1}(t)}{N_{H_1}} + (1 - P)\frac{I_{v_2}(t)}{N_{H_2}}\right)S_{H_2}(t) - \mu_H S_{H_2}(t) + \mu_H N_{H_2}, \\
\frac{dI_{H_2}(t)}{dt} &= ab\left(P\frac{I_{v_1}(t)}{N_{H_1}} + (1 - P)\frac{I_{v_2}(t)}{N_{H_2}}\right)S_{H_2}(t) - (\mu_H + \gamma)I_{H_2}(t), \\
\frac{dR_{H_2}(t)}{dt} &= \gamma I_{H_2}(t) - \mu_H R_{H_2}(t), \\
\frac{dS_{v_2}(t)}{dt} &= -acS_{v_2}(t)\frac{I_{H_2}(t)}{N_{H_2}} - \mu_v S_{v_2}(t) + \mu_v N_{v_2}(1 - P^*), \\
\frac{dL_{v_2}(t)}{dt} &= acS_{v_2}(t)\frac{I_{H_2}(t)}{N_{H_2}} - \mu_v L_{v_2}(t) - acS_{v_2}(t - \tau)\frac{I_{H_2}(t - \tau)}{N_{H_2}}e^{-\mu_v \tau}, \\
\frac{dI_{v_2}(t)}{dt} &= acS_{v_2}(t - \tau)\frac{I_{H_2}(t - \tau)}{N_{H_2}}e^{-\mu_v \tau} - \mu_v I_{v_2}(t),
\end{aligned} \tag{2.7}$$

where all the parameter values are defined as before in Table 1. Note that subscript $(\cdot)_1$ refers to Malaysia while subscript $(\cdot)_2$ refers to the trial site in Section 15 of Shah Alam, Selangor, Malaysia. P^* represents the proportion reduction in the *Aedes* population as a result of using the MHSs in the trial site in Shah Alam which is the key parameter value in deciding the effectiveness of the MHSs. P represents the proportion of all mosquito bites experienced by an individual whilst the person is outside the trial site. So $1 - P$ represents the proportions of all bites experienced by a person which are experienced while the person is in the trial site.

We can derive the basic reproduction number for the modified model given by Equations (2.6) and Equation (2.7) either by using the Next Generation Matrix method with infectious individuals being either infectious humans or latent or infectious mosquitoes, or alternatively by adapting this method so that the infectious individuals are only infectious humans. To start with the first of these approaches there are six types of infectious individuals: namely infectious humans outside the trial site ($i = 1$), latent mosquitoes outside the trial site ($i = 2$), infectious mosquitoes outside the trial site ($i = 3$), infectious humans inside the trial site ($i = 4$), latent mosquitoes inside the trial site ($i = 5$) and infectious mosquitoes inside the trial site ($i = 6$). The Next Generation Matrix is

$$\mathbf{M} = \begin{pmatrix} I_{H_1} & L_{v_1} & I_{v_1} & I_{H_2} & L_{v_2} & I_{v_2} \\ 0 & 0 & \frac{ab}{\mu_v} & 0 & 0 & 0 \\ \frac{m_1 ac}{\mu_H + \gamma} & 0 & 0 & 0 & 0 & 0 \\ \frac{m_1 ac}{\mu_H + \gamma} e^{-\mu_v \tau} & 0 & 0 & 0 & 0 & 0 \\ 0 & 0 & \frac{abP}{\mu_v} & 0 & 0 & \frac{ab(1-P)}{\mu_v} \\ 0 & 0 & 0 & \frac{m_2 ac}{\mu_H + \gamma} & 0 & 0 \\ 0 & 0 & 0 & \frac{m_2 ac}{\mu_H + \gamma} e^{-\mu_v \tau} & 0 & 0 \end{pmatrix} \begin{matrix} I_{H_1} \\ L_{v_1} \\ I_{v_1} \\ I_{H_2} \\ L_{v_2} \\ I_{v_2} \end{matrix},$$

where $m_1 = N_{v_1}/N_{H_1}$ is the ratio of mosquitoes to humans outside the trial site and $m_2 = N_{v_2}(1 - P^*)/N_{H_2}$ is the ratio of mosquitoes to humans inside the trial site in the presence of the MHSs. It is straightforward to show that the eigenvalues of this matrix are

$$\omega = 0, \text{ (twice)}, \omega = \pm \sqrt{\frac{m_1 a^2 b c e^{-\mu_v \tau}}{\mu_v (\mu_H + \gamma)}} \text{ and } \omega = \pm \sqrt{\frac{m_2 a^2 b c e^{-\mu_v \tau} (1 - P)}{\mu_v (\mu_H + \gamma)}}.$$

We assume that in the absence of the MHSs the ratio of mosquitoes to humans is the same inside or outside the trial site, i.e.

$$m_1 = \frac{N_{v_1}}{N_{H_1}} = \frac{N_{v_2}}{N_{H_2}}.$$

Then
$$m_1 \geq m_2(1 - P) = \frac{N_{v_2}}{N_{H_2}}(1 - P^*)(1 - P).$$

So for the modified model given by Equations (2.6) and Equation (2.7), the basic reproduction number \tilde{R}_0^1 calculated by the Next Generation Matrix method is $\tilde{R}_0^1 = \tilde{R}_0$, the same as for the delayed Ross-MacDonald model (2.1). In the rest of the paper we prefer to use the definition of the basic reproduction number given by counting human to human disease transmission as one generation as it corresponds to our previous work, the work of Massad et al. and others [16, 17, 21, 22, 25, 27]. With this definition the basic reproduction number for the modified model is R_0 , again the same as for the Ross-MacDonald model. It is possible to show this directly by constructing an argument similar to the Next Generation Matrix argument given above but with infectious individuals corresponding only to the two types of infectious humans outside and inside the trial site. In this case the corresponding Next Generation Matrix has eigenvalues R_0 and $R_0(1 - P^*)(1 - P)$. Hence the largest absolute eigenvalue is R_0 which is the basic reproduction number for the modified model (2.6) and (2.7).

Note that *Aedes* mosquitoes are more likely to bite at dawn and dusk. In Table 2, we have five different daily time slots in which a person decides to leave the trial site

Time Outside the Trial Site	P	$1 - P$
6 am to 7.45 pm	0.6610	0.3390
6 am to 6.45 pm	0.6210	0.3790
9 am to 7.45 pm	0.4770	0.5230
8 am to 5.45 pm	0.3190	0.6810
9 am to 4.45 pm	0.1280	0.8720

Table 2: Proportions of *Aedes* bites according to biting activities at different time intervals.

Parameter	Values
a	0.20/day
b	0.75 [5]
c	0.375 [5]
N_{H_1}	32,000,000 [18]
N_{H_2}	8,640
μ_H	0.0000366/day [19]
γ	1/7/day [3]
μ_v	1/14/day [26]
N_{v_1}	$m \times N_{H_1}$
N_{v_2}	$m \times N_{H_2}$
τ	8 days [3]

Table 3: Parameter values (N_{H_1} based on 2017) for Equations (2.6) and (2.7).

in Shah Alam and be in the rest of Malaysia. The proportion of the total number of bites experienced by this person which are experienced outside the trial site is P . Thus the corresponding proportion of the total number of bites experienced inside the trial site is $1 - P$. These are got by integrating data for mosquito biting rates at different times of day over the relevant time period [13]. Before we can begin our analysis, it is important for us to know all the required parameter values.

The required parameter values for Malaysia and the trial site in Section 15 of Shah Alam, Selangor, Malaysia are given in Table 3. Note that m represents the number of *Aedes* mosquitoes per person. From [7], m ranges from 0.34 to 22.7 depending on the location, thus in this paper we have chosen m to be around 1.867 which is close to the estimation for Thailand [7].

Note also that the total human population in the trial site area, N_{H_2} , is estimated using the information in [9]. The MHSs trial site in which we are interested is located within Section 15 of Shah Alam, where according to [9], the area is highly densely populated and undergoing rapid development with an estimate of around 2,000 residents per km^2 . Our trial site is approximately $4.320 km^2$, therefore N_{H_2} is around 8,640.

2.1 Estimating the Number of *Aedes* Breeding Sites

Before we start our analysis, it would be useful to know the number of potential breeding sites for *Aedes* mosquitoes as this could help us in determining the ap-

appropriate number of MHSs that would be needed in order to achieve a substantial effect in reducing the number of dengue cases.

In the development of the MHSs a trial was carried out in Singapore Botanic Gardens (Jacob-Ballas Children's Park) [8]. The amount of eggs obtained was counted both in special ovitraps, called Gravitraps, and the MHSs. Here in the Gravitraps there were twelve times fewer eggs than in the MHSs. The MHSs and the Gravitraps were the only mosquito breeding sites where the number of eggs was known. Hence we suppose that mosquitoes lay a factor of twelve times as many eggs in each MHS as in each other possible breeding site. The MHSs contain a particular solution in which *Aedes* mosquitoes prefer to lay eggs. So the MHSs are expected to collect more eggs than the other possible breeding sites.

Let us assume that there are x MHSs being deployed, o ovitraps and y hidden breeding sites. Hence the probability that an egg is laid in an ovitrap is

$$\frac{o}{12x + o + y}.$$

As there are k eggs altogether then the total expected number of eggs laid in all of the ovitraps taken together is

$$\frac{ko}{12x + o + y}. \quad (2.8)$$

So this is the expected number of eggs collected by the ovitraps within the trial site. Note that the formulation for Equation (2.8) is obtained by following a similar idea illustrated in [8]. Thus the number of eggs per ovitrap is

$$\frac{1}{o} \frac{ko}{12x + o + y} = \frac{k}{12x + o + y}.$$

This will be used in Equations (2.9) and (2.10) to estimate the number of hidden breeding sites. From the data collected from the trial site in Section 15 in Shah Alam we have that the the mean number of eggs collected per ovitrap decreased by a factor of 0.7723 from 29.74 to 22.97 eggs per trap after they increased the number of MHSs from 340 to 625. Therefore the number of hidden breeding sites can be estimated by comparing the percentage reduction in the mean number of eggs per ovitrap before and after they increased the number of MHSs. As a result, the number of hidden breeding sites can be estimated as follows:

$$\frac{0.7723k}{12 \times 340 + 126 + y} = \frac{k}{12 \times 625 + 193 + y}, \quad (2.9)$$

where the number of ovitraps have also increased accordingly to cover more blocks of shop houses (from 126 to 193). Hence

$$\frac{0.7723}{12 \times 340 + 126 + y} = \frac{1}{12 \times 625 + 193 + y}. \quad (2.10)$$

By rearranging Equation (2.10) and solving for y , which represents the number of hidden sites, we have that $y = 7,621$.

3 Effect of MHSs on Spread of Dengue in Trial Site in Section 15 of Shah Alam

In this section, we will focus on working with Equation (2.7) which describes the dynamical behaviour of dengue within the 18 blocks of shop houses (the trial site)

in Section 15 of Shah Alam, Selangor, Malaysia. As mentioned previously, the key parameter value that we wish to investigate is P^* , which represents the proportion of reduction in the *Aedes* population as a result of the MHSs.

There are three different scenarios we will explore in this section, namely:

1. No MHSs within the 18 blocks of shop houses (the trial site),
2. 340 MHSs with 126 ovitraps within the 18 blocks of shop houses,
3. 625 MHSs with 193 ovitraps within the 18 blocks of shop houses.

By following a similar argument as in Section 3 of [8], P^* can be expressed by using the following equation:

$$P^* = \frac{12x}{12x + o + y}, \quad (3.1)$$

where x , o and y are defined as before. This can also be obtained from the argument in Section 2.1 by noting that P^* is the probability that an egg is laid in an MHS which is given by Equation (3.1). After substituting all the required parameter values into Equation (3.1), we have that

1. $P^* = 0$, if there are no MHSs within the 18 blocks of shop houses,
2. $P^* = 0.3450$, if we have 340 MHSs within the 18 blocks of shop houses,
3. $P^* = 0.4897$, if we have 625 MHSs within the 18 blocks of shop houses.

Note that the P^* values obtained from the Jacob-Ballas Children's Park trial at Singapore Botanic Gardens ($P^* = 0.5889$) as well as from the trials carried out in 3 blocks of flats in Selangor [8] ($P^* = 0.6871$ and $P^* = 0.7789$) are higher than the ones we are using in this paper.

Note also, unless stated otherwise, the unit of time is in weeks.

3.1 Numerical Simulation for Using MHSs in 18 Blocks of Shop Houses in Shah Alam

Let us define all the parameter values as before. The total population in Malaysia in 2017 was around 32 million [20]. The dengue incidence rate in Malaysia in 2017 was approximately 258.9 per 100,000 people [10]. Typically, dengue cases have a high ratio of asymptomatic to symptomatic cases of 4 to 1 respectively and thus we will increase the incidence rate by five times to reflect this situation. By using the dengue incidence rate in Malaysia in 2017, we can estimate the initial value for the number of infected individuals in Malaysia, namely $I_{H_1}(0)$. In addition, from 1995 to 2016, the number of dengue cases in Malaysia was around 879,501 (without taking into consideration the asymptomatic cases). As a result, by using $S(t) + I(t) + R(t) = N$ and the above information, the initial values, working to 3 d.p, of Equations (2.6) and (2.7) are:

$$S_{H_1}(0) = 27,594,529, \quad I_{H_1}(0) = 7,966.154, \quad R_{H_1}(0) = 4,397,505,$$

$$S_{v_1}(0) = 59,741,088, \quad L_{v_1}(0) = 6,797.226, \quad I_{v_1}(0) = 8,818.462,$$

$$S_{H_2}(0) = 7,450.523, \quad I_{H_2}(0) = 2.151, \quad R_{H_2}(0) = 1,187.326,$$

$$S_{v_2}(0) = 16,130.09, \quad L_{v_2}(0) = 1.835, \quad I_{v_2}(0) = 2.381,$$

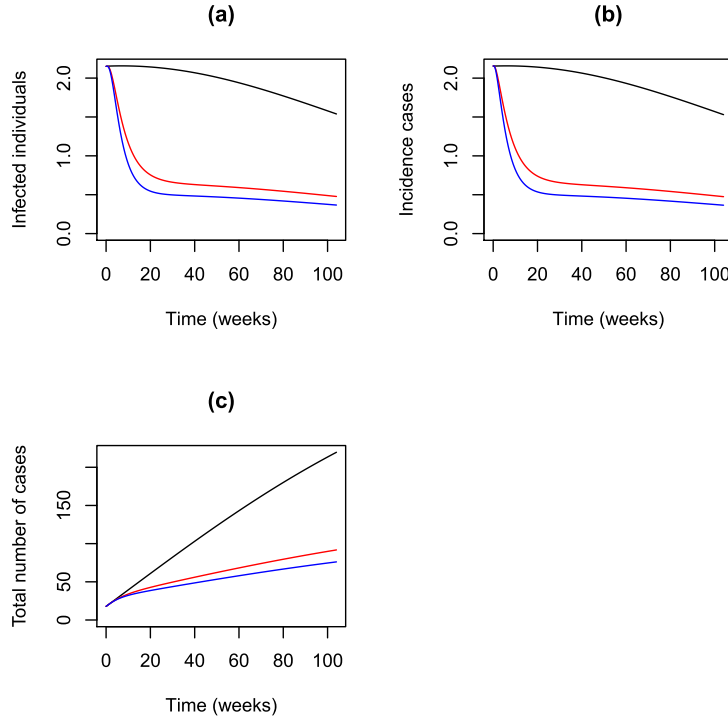


Figure 1: Numerical simulations for (a) infected individuals (b) incidence cases (in weeks) and (c) cumulative total number of dengue cases within the trial site in Section 15 of Shah Alam, Selangor, Malaysia, for $P = 0.1280$ where the black line, red line and blue line represent $P^* = 0$, $P^* = 0.3450$ and $P^* = 0.4897$ respectively over a period of 2 years.

where we have set the initial values within the trial site to reflect the distribution of the initial values in Malaysia. Note that the initial conditions for the number of susceptible, latent and infected mosquitoes in Malaysia are obtained using the initial value of $I_{H_1}(0)$ and N_{H_1} and substituting them into the equilibrium version of the differential equations for $\frac{dS_{v_1}(t)}{dt}$, $\frac{dL_{v_1}(t)}{dt}$ and $\frac{dI_{v_1}(t)}{dt}$.

Example 3.1 ($P = 0.1280$)

In this example, let us choose a small P value from Table 2, namely 0.1280, to denote the proportion of bites a person will get if going outside the trial site between 9am to 4.45pm as stated in Table 2.

By using the parameter values defined in Table 3 and the above initial conditions, we have the numerical simulation results given in Figure 1. From Figure 1, we can see that by deploying MHSs in the trial sites in Shah Alam, the number of infected individuals, incidence cases and the total number of dengue cases have all reduced drastically. In addition, we can see that by having more MHSs (illustrated by blue lines), the effect of reducing the number of dengue cases is greater than having a lower number of MHSs (the red lines) which is to be expected. The numerical results given in Figure 1 are very promising as they demonstrate the effectiveness of using the MHSs in reducing the number of dengue cases in the trial area.

In order to analyse the impact of using the MHSs and understand better as to why we have a lower number of dengue cases when we use the MHSs, let us look at Figure 2. From Figure 2, we have the dynamical behaviour of Aedes mosquitoes

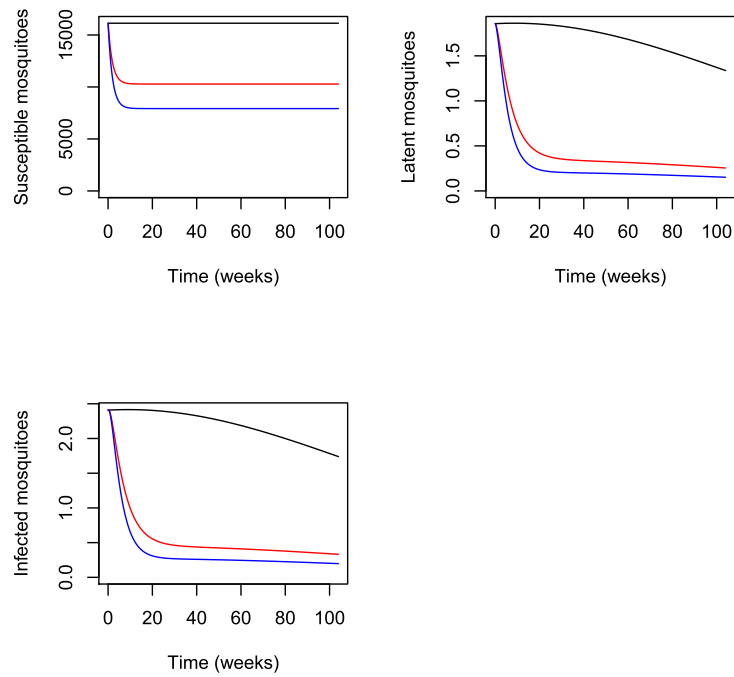


Figure 2: Dynamical behaviour for *Aedes* mosquitoes within the trial site in Section 15 of Shah Alam, Selangor, Malaysia, for $P = 0.1280$ where the black line, red line and blue line represent $P^* = 0$, $P^* = 0.3450$ and $P^* = 0.4897$ respectively over a period of 2 years.

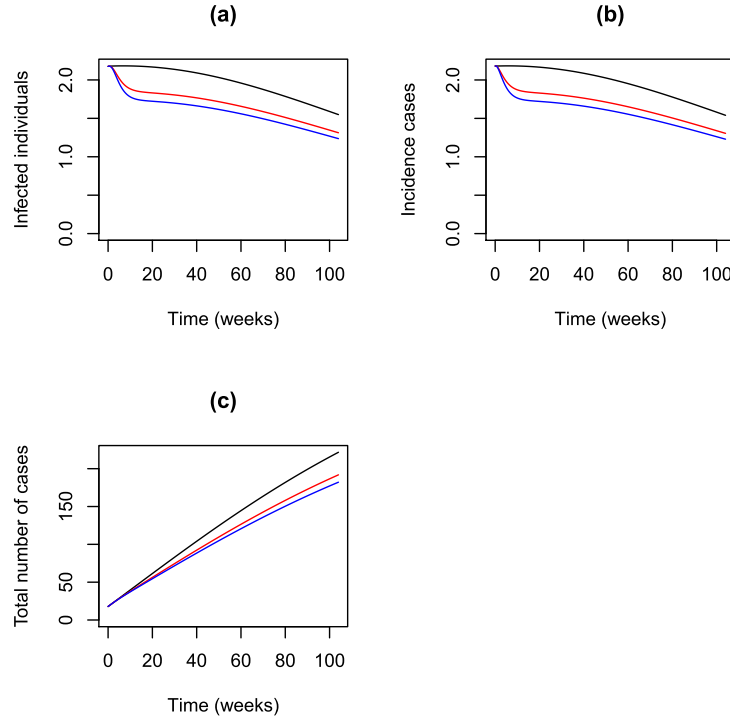


Figure 3: Numerical simulations for (a) infected individuals (b) incidence cases (in weeks) and (c) cumulative total number of dengue cases within the trial site in Section 15 of Shah Alam, Selangor, Malaysia, for $P = 0.6610$ where the black line, red line and blue line represent $P^* = 0$, $P^* = 0.3450$ and $P^* = 0.4897$ respectively over a period of 2 years.

for different levels of MHSs. By using the MHSs in the trial site in Section 15 of Shah Alam, we can see that the number of susceptible, infected and latent mosquitoes have reduced drastically. This is again to be expected as the MHS is designed to lure the female *Aedes* mosquitoes to lay eggs there. Any eggs laid will be killed and will not hatch into adult *Aedes* to transmit dengue. By using the MHSs, the total *Aedes* population size will reduce thus reducing the number of dengue cases as illustrated here numerically.

In the next example, we will look at what will happen if we choose a higher P value, say $P = 0.6610$. In other words, what will happen to the number of dengue cases if an average person stays outside the trial site for a longer period of time (and thus potentially has a greater chance of getting bitten more often). In this case the longer period of time is between 6am to 7.45pm.

Example 3.2 ($P = 0.6610$)

In this example, let us choose a higher P value, namely 0.6610. By carrying out the same procedure as we did in Example 3.1, the results are given in Figures 3 and 4. From Figure 3, we can see that by using the MHSs in the trial site in Shah Alam, the number of infected individuals, the number of incidence cases and the total dengue cases have reduced. However if we compare the percentage of reduction to Figure 1 when we have $P = 0.1280$, the percentage reductions in this case in all three categories are not as drastic when we have $P = 0.6610$. This finding is reasonable

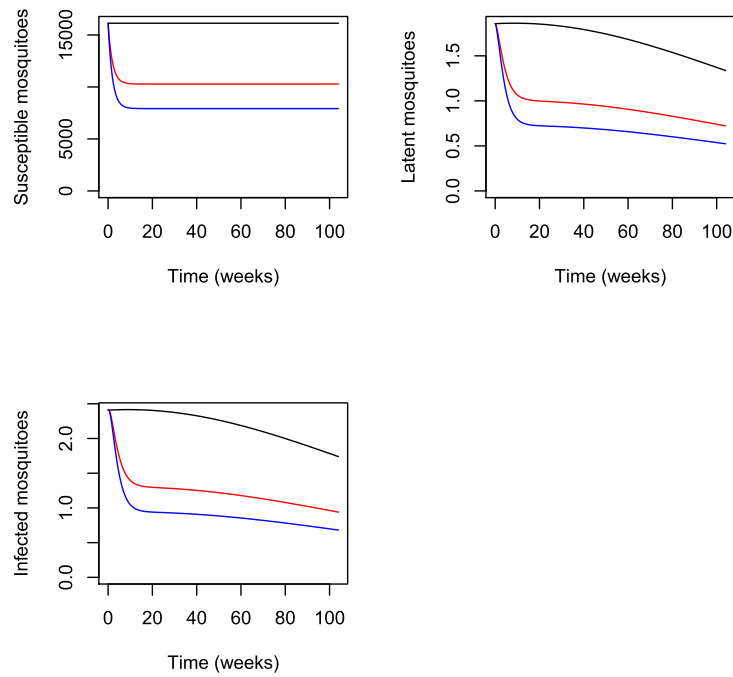


Figure 4: Dynamical behaviour for *Aedes* mosquitoes within the trial site in Section 15 of Shah Alam, Selangor, Malaysia, for $P = 0.6610$ where the black line, red line and blue line represent $P^* = 0$, $P^* = 0.3450$ and $P^* = 0.4897$ respectively over a period of 2 years.

$P = 0.1280$								
P^* values	$S_{H_2}(t)$	$I_{H_2}(t)$	$R_{H_2}(t)$	Incidence cases	Total number of cases	$S_{v_2}(t)$	$L_{v_2}(t)$	$I_{v_2}(t)$
0	7,403.097	2.118	1,234.785	2.116	127.862	16,130.150	1.808	2.352
0.3450	7,428.509	0.973	1,210.518	0.944	66.900	10,780.590	0.582	0.853
0.4897	7,433.486	0.791	1,205.723	0.759	57.280	8,536.153	0.393	0.617

Table 4: Mean values for variables within the trial site in Section 15 of Shah Alam, Selangor, Malaysia, for $P = 0.1280$, where $P^* = 0$: No MHSs, $P^* = 0.3450$: 340 MHSs and $P^* = 0.4897$: 625 MHSs to 3 d.p after 1 year. Note that the total number of cases refers to the cumulative incidence of the number of dengue cases over the year.

as a higher P value means that an average person spends more time outside the trial site thus getting bitten more by Aedes mosquitoes. As a result, it will be more likely for a person to bring in new infection to Shah Alam, and thus make it harder for the MHSs to control the number of dengue cases. However, it is still important to note that when using the MHSs in the trial site even when an average person stays outside the trial site for a longer period of time, the number of dengue cases are still reduced compared to having no MHSs at all.

To further illustrate this idea, let us look at Figure 4, where again we can see clearly that the number of susceptible, infected and latent Aedes mosquitoes have reduced when using the MHSs in the trial site resulting in having less Aedes mosquitoes available to transmit the disease. However, again, due to a higher P value, the relative reduction is not as great as when we have $P = 0.1280$.

In this section, we have focused on analysing the effect of using different levels of MHSs in reducing the number of dengue cases in the trial site in Section 15 of Shah Alam. The results produced have been promising by showing a great reduction in the number of dengue cases as well as the number of *Aedes* mosquitoes available to transmit the disease.

3.2 Effect of Different P and P^* Values on the Number of Dengue Cases in Shah Alam

In the previous section, we noticed that by having different P values, in other words, different proportions of time spent outside the trial site, this will have an impact on the percentage reduction in the number of dengue cases. Therefore, in this section we will vary both P and P^* values and examine closely their impact on the number of dengue cases in the trial site.

The results from deploying the MHSs in the 18 blocks of shop houses in Section 15 of Shah Alam, Selangor, Malaysia, for various P values and P^* values are given in Tables 4, 6, 8 and 10 where their corresponding endemic equilibrium values are given in Tables 5, 7, 9 and 11, together with the total number of dengue cases over the year.

From our tables of results, regardless of what our P value is, in other words, regardless of how much time an average person spends outside the trial site, by using the MHSs in the trial site in Shah Alam, the total number of cases, infected

$P = 0.1280$								
P^* values	$S_{H_2}(t)$	$I_{H_2}(t)$	$R_{H_2}(t)$	Incidence cases	Total number of cases	$S_{v_2}(t)$	$L_{v_2}(t)$	$I_{v_2}(t)$
0	7,433.524	0.310	1,206.165	0.310	16.129	16,133.700	0.265	0.343
0.3450	8,182.197	0.118	457.685	0.118	6.120	10,567.820	0.066	0.085
0.4897	8,297.496	0.088	342.416	0.088	4.579	8,233.250	0.038	0.050

Table 5: Endemic equilibrium values for variables within the trial site in Section 15 of Shah Alam, Selangor, Malaysia, for $P = 0.1280$, where $P^* = 0$: No MHSs, $P^* = 0.3450$: 340 MHSs and $P^* = 0.4897$: 625 MHSs to 3 d.p.

$P = 0.3190$								
P^* values	$S_{H_2}(t)$	$I_{H_2}(t)$	$R_{H_2}(t)$	Incidence cases	Total number of cases	$S_{v_2}(t)$	$L_{v_2}(t)$	$I_{v_2}(t)$
0	7,403.097	2.118	1,234.785	2.116	127.862	16,130.150	1.808	2.352
0.3450	7,419.777	1.390	1,218.834	1.371	89.134	10,780.080	0.812	1.131
0.4897	7,424.149	1.215	1,214.636	1.193	79.871	8,535.748	0.576	0.840

Table 6: Mean values for variables within the trial site in Section 15 of Shah Alam, Selangor, Malaysia, for $P = 0.3190$, where $P^* = 0$: No MHSs, $P^* = 0.3450$: 340 MHSs and $P^* = 0.4897$: 625 MHSs to 3 d.p after 1 year. Note that the total number of cases refers to the cumulative incidence of the number of cases over the year.

$P = 0.3190$								
P^* values	$S_{H_2}(t)$	$I_{H_2}(t)$	$R_{H_2}(t)$	Incidence cases	Total number of cases	$S_{v_2}(t)$	$L_{v_2}(t)$	$I_{v_2}(t)$
0	7,433.524	0.310	1,206.165	0.310	16.129	16,133.700	0.265	0.343
0.3450	7,868.245	0.198	771.557	0.198	10.318	10,567.720	0.111	0.144
0.4897	7,980.868	0.169	658.963	0.169	8.812	8,233.169	0.074	0.096

Table 7: Endemic equilibrium values for variables within the trial site in Section 15 of Shah Alam, Selangor, Malaysia, for $P = 0.3190$, where $P^* = 0$: No MHSs, $P^* = 0.3450$: 340 MHSs and $P^* = 0.4897$: 625 MHSs to 3 d.p.

$P = 0.4770$								
P^* values	$S_{H_2}(t)$	$I_{H_2}(t)$	$R_{H_2}(t)$	Incidence cases	Total number of cases	$S_{v_2}(t)$	$L_{v_2}(t)$	$I_{v_2}(t)$
0	7,403.097	2.118	1,234.785	2.116	127.862	16,130.150	1.808	2.352
0.3450	7,414.394	1.634	1,223.973	1.621	102.135	10,779.780	0.947	1.295
0.4897	7,417.874	1.491	1,220.635	1.476	94.581	8,535.483	0.695	0.985

Table 8: Mean values for variables within the trial site in Section 15 of Shah Alam, Selangor, Malaysia, for $P = 0.4770$, where $P^* = 0$: No MHSs, $P^* = 0.3450$: 340 MHSs and $P^* = 0.4897$: 625 MHSs to 3 d.p after 1 year. Note that the total number of cases refers to the cumulative incidence of the number of cases over the year.

$P = 0.4770$								
P^* values	$S_{H_2}(t)$	$I_{H_2}(t)$	$R_{H_2}(t)$	Incidence cases	Total number of cases	$S_{v_2}(t)$	$L_{v_2}(t)$	$I_{v_2}(t)$
0	7,433.524	0.310	1,206.165	0.310	16.129	16,133.700	0.265	0.343
0.3450	7,713.490	0.238	926.272	0.238	12.387	10,567.670	0.133	0.173
0.4897	7,801.087	0.216	838.698	0.216	11.215	8,233.123	0.094	0.122

Table 9: Endemic equilibrium values for variables within the trial site in Section 15 of Shah Alam, Selangor, Malaysia, for $P = 0.4770$, where $P^* = 0$: No MHSs, $P^* = 0.3450$: 340 MHSs and $P^* = 0.4897$: 625 MHSs to 3 d.p.

$P = 0.6610$								
P^* values	$S_{H_2}(t)$	$I_{H_2}(t)$	$R_{H_2}(t)$	Incidence cases	Total number of cases	$S_{v_2}(t)$	$L_{v_2}(t)$	$I_{v_2}(t)$
0	7,403.097	2.118	1,234.785	2.116	127.862	16,130.150	1.808	2.352
0.3450	7,409.527	1.847	1,228.627	1.839	113.464	10,779.52	1.065	1.438
0.4897	7,411.799	1.753	1,226.448	1.744	108.484	8,535.232	0.808	1.123

Table 10: Mean values for variables within the trial site in Section 15 of Shah Alam, Selangor, Malaysia, for $P = 0.6610$, where $P^* = 0$: No MHSs, $P^* = 0.3450$: 340 MHSs and $P^* = 0.4897$: 625 MHSs to 3 d.p after 1 year. Note that the total number of cases refers to the cumulative incidence of the number of cases over the year.

$P = 0.6610$								
P^* values	$S_{H_2}(t)$	$I_{H_2}(t)$	$R_{H_2}(t)$	Incidence cases	Total number of cases	$S_{v_2}(t)$	$L_{v_2}(t)$	$I_{v_2}(t)$
0	7,433.524	0.310	1,206.165	0.310	16.129	16,133.700	0.265	0.343
0.3450	7,587.452	0.271	1,052.277	0.271	14.072	10,567.630	0.151	0.196
0.4897	7,642.698	0.256	997.045	0.256	13.333	8,233.082	0.112	0.145

Table 11: Endemic equilibrium values for variables within the trial site in Section 15 of Shah Alam, Selangor, Malaysia, for $P = 0.6610$, where $P^* = 0$: No MHSs, $P^* = 0.3450$: 340 MHSs and $P^* = 0.4897$: 625 MHSs to 3 d.p.

P values	0 MHSs	340 MHSs	625 MHSs
0.1280	0.310	0.118	0.088
0.3190	0.310	0.198	0.169
0.4770	0.310	0.238	0.216
0.6610	0.310	0.271	0.256

Table 12: Number of of incidence cases per week for different numbers of MHSs within the trial site in Shah Alam, Selangor, Malaysia, with proportions of time spent outside the trial site at the EE.

P values	$P^* = 0$ to $P^* = 0.3450$	$P^* = 0.3450$ to $P^* = 0.4897$
0.1280	61.94%	24.48%
0.3190	36.13%	14.65%
0.4770	23.23%	9.24%
0.6610	12.58%	5.54%

Table 13: Percentage reduction in the number of incidence cases at EE for various values of P .

individuals and incidence cases have all reduced as a result of the MHSs reducing the total *Aedes* population.

However, it is important to note that the P value does have an impact on the level of reduction in the number of dengue cases. In order to illustrate this scenario better, we have extracted the incidence cases per week at endemic equilibrium level for each P value. The results are given in Table 12. From Table 12, we can see that the MHSs have effectively reduced the number of incidence cases per week for all values of P , but the relative reduction decreases as P increases. From Table 13, we can see clearly that when we have a small P value, say 0.1280, in other words an average person stays the majority of the time inside the trial site, there is a 61.94% reduction in the number of incidence cases in the trial site when we used 340 MHSs. The same percentage is however reduced to only 12.58% when the relative time spent outside the trial site increases to $P = 0.6610$.

In this section, we have been focussing on analysing the effect of using the MHSs in reducing the number of dengue cases in the trial site in Shah Alam. From the numerical simulations and the tables of results given, it is clear that by using the MHSs, the number of dengue cases have reduced. However it is important to point out that, from our numerical analysis carried out on Equations (2.6) and (2.7), the impact from the MHSs in the trial site has very little effect in reducing the number of dengue cases in Malaysia as a whole. This is not surprising as the area of the trial site in comparison to the whole of Malaysia is almost insignificant. Therefore, even though the dengue cases have been reduced drastically in the trial site, the effect is insignificant in the whole of Malaysia. This implies that in order for the MHSs to have an impact on the number of dengue cases in Malaysia and eventually lead to dengue extinction, a fraction of residences across Malaysia would need to deploy MHSs. The most important questions to ask are: ‘‘What is the fraction of coverage needed in order to achieve extinction of dengue in Malaysia?’’ and ‘‘What will happen to the number of dengue cases if we increase the number of MHSs?’’ Thus in the next section, we will focus on answering these crucial questions and analysing the effect of the MHSs in controlling the spread of dengue in Malaysia as a whole. A new dengue model will also be given with a new basic reproduction number, $R_{0,Mala}^{MHS}$.

4 New Model: MHSs in Malaysia and Dengue Extinction Condition

In this section, we will include the effect of the MHSs in the differential equations for Malaysia by assuming that a fraction x of the residences in Malaysia are using

MHSs. Thus, Equations (2.6) become

$$\begin{aligned}
\frac{dS_{H_1}(t)}{dt} &= -abI_{v_1}(t)\frac{S_{H_1}(t)}{N_{H_1}} - \mu_H S_{H_1}(t) + \mu_H N_{H_1}, \\
\frac{dI_{H_1}(t)}{dt} &= abI_{v_1}(t)\frac{S_{H_1}(t)}{N_{H_1}} - (\mu_H + \gamma)I_{H_1}(t), \\
\frac{dR_{H_1}(t)}{dt} &= \gamma I_{H_1}(t) - \mu_H R_{H_1}(t), \\
\frac{dS_{v_1}(t)}{dt} &= -acS_{v_1}(t)\frac{I_{H_1}(t)}{N_{H_1}} - \mu_v S_{v_1}(t) + \mu_v N_{v_1}(1 - P^*x), \\
\frac{dL_{v_1}(t)}{dt} &= acS_{v_1}(t)\frac{I_{H_1}(t)}{N_{H_1}} - \mu_v L_{v_1}(t) - acS_{v_1}(t - \tau)\frac{I_{H_1}(t - \tau)}{N_{H_1}}e^{-\mu_v\tau}, \\
\frac{dI_{v_1}(t)}{dt} &= acS_{v_1}(t - \tau)\frac{I_{H_1}(t - \tau)}{N_{H_1}}e^{-\mu_v\tau} - \mu_v I_{v_1}(t),
\end{aligned} \tag{4.1}$$

where x ($0 \leq x \leq 1$) represents the fraction of coverage of the MHSs in Malaysia and P^* represents the total reduction in the proportion of *Aedes* population as a result of using the MHSs in the trial site in Shah Alam. All the other parameter values are defined as before.

Throughout this section, it will also be useful to work out the dengue incidence cases in order to compare the results of using the MHSs and not using the MHSs.

Let us define the following parameters:

- λ_{human}^{Mala} denotes the per capita force of infection for humans in Malaysia.
- λ_{Aedes}^{Mala} denotes the per capita force of infection for *Aedes* mosquitoes in Malaysia.

Then, it is easy to see that

$$\lambda_{human}^{KL} = abm\frac{I_{v_1}^*}{N_{v_1}}, \tag{4.2}$$

$$\lambda_{Aedes}^{KL} = ac\frac{I_{H_1}^*}{N_{H_1}}, \tag{4.3}$$

where $I_{v_1}^*$ and $I_{H_1}^*$ respectively are the equilibrium number of infected mosquitoes and infected humans in Malaysia.

Before we begin with our numerical analysis on the new dengue model in Malaysia with MHSs, it is also crucial for us to construct a basic reproduction number for our new model. Let us consider a human population consisting of N_H persons in Malaysia and a population of mosquitoes consisting of $N_v(1 - P^*x)$ females, where P^* is the effect of using the MHS and x ($0 \leq x \leq 1$) is the fraction of homes in Malaysia employing the MHSs. Then by following the same idea as in [22], we have that the reproduction number for the new model is

$$R_{0,Mala}^{MHS} = \frac{m^*a^2bce^{-\mu_v\tau}}{\mu_v(\mu_H + \gamma)}, \tag{4.4}$$

where $m^* = \frac{N_v(1-P^*x)}{N_H}$ and all the other parameter values are defined as before. Clearly, in order to get extinction of dengue in Malaysia, $R_{0,Mala}^{MHS}$ needs to be less

than one. Thus, the condition on extinction in relation to the fraction of coverage of the MHSs in Malaysia can be expressed as follows:

$$\begin{aligned} P^* x &> 1 - \frac{\mu_v(\mu_H + \gamma)}{ma^2bce^{-\mu_v\tau}}, \\ x &> \left(\frac{1}{P^*}\right) \times \left(1 - \frac{\mu_v(\mu_H + \gamma)}{ma^2bce^{-\mu_v\tau}}\right). \end{aligned} \quad (4.5)$$

In order to demonstrate the effect of a fraction of residences in Malaysia using MHSs as well as the relationship between x and P^* , we will look at two examples with different P^* values. Recall that P^* represents the proportion of reduction in the total *Aedes* population as a result of using the MHSs.

4.1 Effect of MHSs on Dengue Cases in Malaysia when $P^* = 0.3450$

Let us recall the initial conditions that we used in Section 3.1:

$$\begin{aligned} S_{H_1}(0) &= 27,594,529, & I_{H_1}(0) &= 7,966.154, & R_{H_1}(0) &= 4,397,505, \\ S_{v_1}(0) &= 59,741,088, & L_{v_1}(0) &= 6,797.226, & I_{v_1}(0) &= 8,818.462, \\ S_{H_2}(0) &= 7,450.523, & I_{H_2}(0) &= 2.151, & R_{H_2}(0) &= 1,187.326, \\ S_{v_2}(0) &= 16,130.09, & L_{v_2}(0) &= 1.835, & I_{v_2}(0) &= 2.381, \end{aligned}$$

where all the parameter values are defined as before.

From Figure 5, we can see that a fraction of residences in Malaysia deploying MHSs has effectively reduced the number of infected individuals, dengue incidence cases and the total number of dengue cases. The higher the x value, in other words, the greater the fraction of homes that we have in Malaysia that use the MHSs, the greater the reduction in the number of dengue cases, which is to be expected. This finding is again confirmed in Figure 6, where we can see that the number of susceptible, infected and latent *Aedes* mosquitoes in Malaysia have reduced as a result of deploying a fraction of MHSs in Malaysia.

In addition, if we look at the blue, green and purple lines in Figure 5, the number of infected individuals and incidence cases appear to tend to zero. Thus from the simulations, it appears that dengue cases have been eliminated when we have around 20% to 40% coverage of MHSs in Malaysia. This is a very promising result as the simulations not only indicate the effectiveness of MHSs in reducing the number of dengue cases in Malaysia, but also show that by having the right level of coverage, dengue can be eradicated. In order to identify the exact percentage coverage needed to achieve extinction of dengue in Malaysia when $P^* = 0.3450$, let us refer to the extinction criterion given by Equation (4.5) mentioned at the start of this section. Recall that

$$x > \left(\frac{1}{P^*}\right) \times \left(1 - \frac{\mu_v(\mu_H + \gamma)}{ma^2bce^{-\mu_v\tau}}\right). \quad (4.6)$$

By substituting all the required parameter values into the right hand side of Equation (4.6), we have that in order to eliminate dengue in Malaysia when $P^* = 0.3450$, the fraction of coverage of MHSs needs to be greater than 0.4043. In other

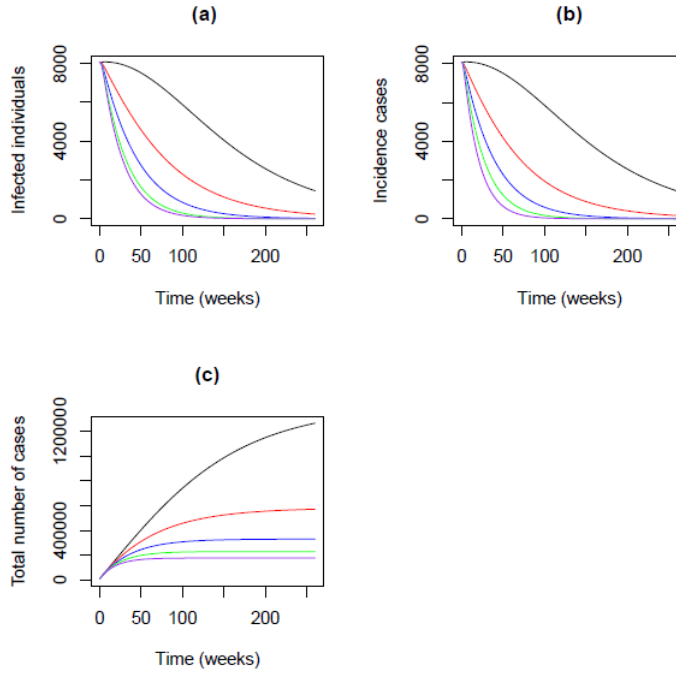


Figure 5: Numerical simulations for (a) infected individuals (b) incidence cases (in weeks) and (c) total number of dengue cases in Malaysia where the black line: $x = 0$, red line: $x = 0.1$, blue line: $x = 0.20$, green line: $x = 0.30$ and purple line: $x = 0.40$ over a period of 5 years where $P^* = 0.3450$.

$P^* = 0.3450$	
x values	Dengue incidence cases in Malaysia
0	1,148.814
0.10	895.947
0.20	624.341
0.30	331.869
0.39	24.278
0.41	0.0

Table 14: Dengue incidence cases per week at EE for different fractions of coverage of MHSs in Malaysia where $P^* = 0.3450$: 340 MHSs to 3 d.p.

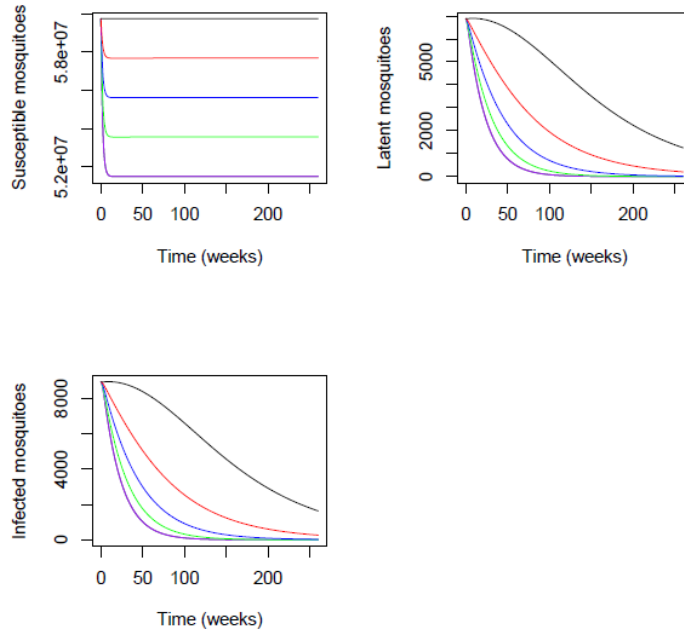


Figure 6: Dynamical behaviour for *Aedes* mosquitoes in Malaysia where the black line: $x = 0$, red line: $x = 0.1$, blue line: $x = 0.20$, green line: $x = 0.30$ and purple line: $x = 0.40$ over a period of 5 years where $P^* = 0.3450$.

words, around 40.43% of the homes in Malaysia would need to use this level of MHSs in order to eradicate dengue in Malaysia.

From Table 14, we have the corresponding number of dengue cases per week at endemic equilibrium level in Malaysia with different x values and $P^* = 0.3450$. From the table, the results clearly support our extinction threshold of needing $x > 0.4043$ for dengue extinction in Malaysia. As the x value increases, the number of dengue incidence cases also decreases.

In this section, we focussed on analysing the effect of having $P^* = 0.3450$ and we found that to achieve extinction in Malaysia we need $x > 0.4043$. In the next section, we will look at what happens when we increase P^* to 0.4897.

4.2 Effect of MHSs on Dengue Cases in Malaysia when $P^* = 0.4897$

The numerical simulations for the number of infected individuals, number of incidence cases and the total number of dengue cases in Malaysia when we have $P^* = 0.4897$ for different levels of coverage are given in Figure 7. From the simulation, it is clear that using the MHSs throughout Malaysia has effectively reduced the number of dengue cases. From Figure 8, we can also see the reduction in the number of susceptible, latent and infected *Aedes* mosquitoes as a result of the MHSs.

By comparing Figure 5 with Figure 7, we can see that for a higher value of P^* , the curves for infected individuals, incidence cases and total number of cases reduce more steeply. This is again to be expected as by having a higher P^* value, we would

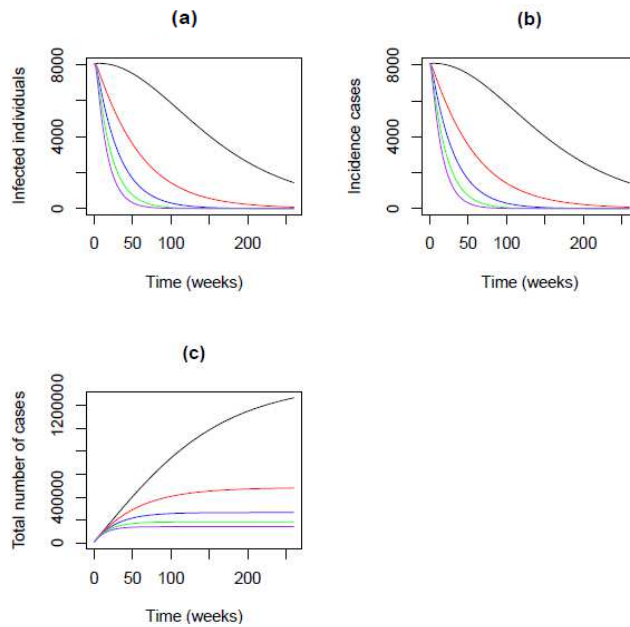


Figure 7: Numerical simulations for (a) infected individuals (b) incidence cases (in weeks) and (c) total number of dengue cases in Malaysia where the black line: $x = 0$, red line: $x = 0.1$, blue line: $x = 0.20$, green line: $x = 0.30$ and purple line: $x = 0.40$ over a period of 5 years where $P^* = 0.4897$.

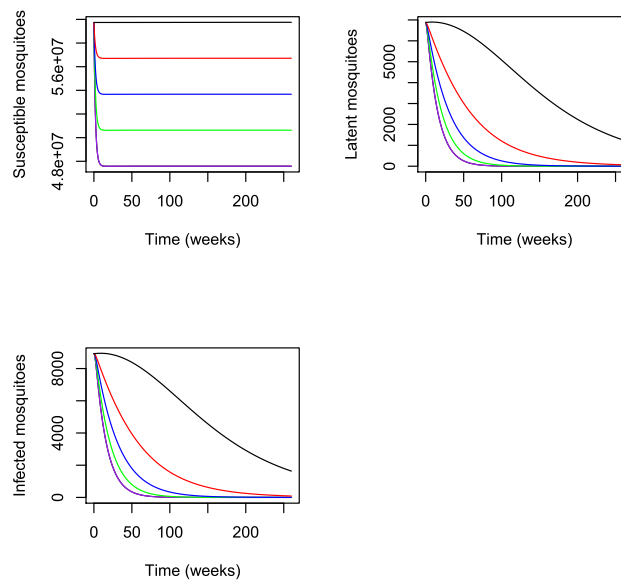


Figure 8: Dynamical behaviour for *Aedes* mosquitoes in Malaysia where the black line: $x = 0$, red line: $x = 0.1$, blue line: $x = 0.20$, green line: $x = 0.30$ and purple line: $x = 0.40$ over a period of 5 years where $P^* = 0.4897$.

$P^* = 0.4897$	
x values	Dengue incidence cases in Malaysia
0	1,148.813
0.10	784.437
0.20	380.510
0.25	161.697
0.29	0.0

Table 15: Dengue incidence cases per week at EE for different fractions of coverage of MHSs in Malaysia where $P^* = 0.4897$: 625 MHSs to 3 d.p.

x value	P^* value
0.05	Not possible
0.10	Not possible
0.15	0.931
0.20	0.698
0.25	0.559
0.30	0.466
0.35	0.399
0.40	0.349
0.45	0.303

Table 16: Proportion of reduction needed in the *Aedes* mosquitoes population from using MHSs to achieve dengue extinction in Malaysia for different x values to 3 d.p.

expect the effect of reducing dengue cases to be more significant.

Similarly to Section 4.1, by substituting the appropriate parameter values in the right hand side of the extinction criteria given in Equation (4.5), we have that for $P^* = 0.4897$, in order to achieve extinction in dengue in Malaysia, x needs to be greater than 0.2848. In other words, when $P^* = 0.4897$, we would need to have around 28.48% coverage of MHSs in Malaysia. Note that the percentage of coverage in this case is lower than the one needed in Section 4.1 for extinction.

From Table 15, we can clearly see that the results support our extinction criteria, by showing the number of dengue incidence cases in both Malaysia and in the trial site in Section 15 of Shah Alam to be zero when the fraction of coverage in Malaysia is greater than 28.48%.

4.3 Extinction Criteria in terms of x and P^*

In the previous two sections, we focussed on answering the question “What proportion of homes in Malaysia need to use MHSs if the proportion of reduction in the *Aedes* population is a given value of P^* (say 0.3450 or 0.4897)?”. In this section we shall instead aim to answer the question “What is the proportion of reduction needed in the *Aedes* population from the MHSs if we wish to achieve dengue extinction in Malaysia by a fraction x of homes using MHSs?”

By doing simple algebraic rearrangement in the extinction condition given in Equation (4.5), we have the required answers given in Table 16. We can interpret

the results from Table 16 as if we wish to achieve extinction in dengue in Malaysia by only covering 15% of Malaysia with MHSs, then the effect from using the MHSs needs to be able to reduce the total *Aedes* population by about 93.1%. However, if we can cover 40% of Malaysia with MHSs, then extinction is possible as long as the MHSs are able to reduce the *Aedes* population by 34.9%. This information will be useful in helping us in deciding the right amount of MHSs that we need to deploy in Malaysia in order to reduce or eliminate dengue.

5 Conclusion and Discussion

Dengue is endemic in Malaysia and has caused the Malaysian government much money every year in trying to control its spread. In this paper, we have used mathematical modelling to analyse the spread of dengue between humans and *Aedes* mosquitoes and evaluated the effectiveness of using a type of auto-dissemination trap, the Mosquito Home System (MHS), in reducing the number of dengue cases. By using the MHSs trial data obtained from the trial site in Section 15 of Shah Alam, Selangor, Malaysia, we are able to produce numerical simulations and results which highlighted the effectiveness of using the MHSs in reducing the number of dengue cases in the trial site. From the numerical results produced in R, we can see that the MHSs drastically reduced the number of susceptible, infected and latent *Aedes* mosquitoes at the trial site.

Later on, we found that from the numerical simulations that having MHSs in the trial site in Shah Alam alone has little effect in controlling the dengue cases occurring in the whole of Malaysia, which is not surprising. Therefore we improved on our model by including the effect of MHSs in the differential equations for Malaysia by assuming that a fraction x of the homes in Malaysia employ MHSs. From our numerical simulations produced for the dengue model for Malaysia, we have found that the MHSs have effectively reduced the number of dengue cases. A basic reproduction number, $R_{0,Mala}^{MHS}$, for this new model was obtained which allowed us to construct the crucial extinction condition which we need to meet in order to eliminate dengue in Malaysia. Finally, we obtained the required fraction of coverage of MHSs that is needed in order to obtain extinction. These results should help us in deciding on the right level of MHSs coverage that is needed in Malaysia in order to better control the spread of dengue.

The analytical work that has been performed in this paper is based on the data from the site of the MHS trial taking place in Section 15 of Shah Alam. It is reasonable to think that depending on the location and district of the trial site, the MHSs would perform differently. Therefore if we are able to have more trial data in the future, we could extend our dengue model by taking into consideration the effect of MHSs from different districts in Malaysia.

6 Acknowledgements

This work was supported by the Dengue Tech Challenge 2016 grant (Application Reference DTC 16022), under the Newton-Ungku Omar Fund partnership. The grant is funded by the UK Department for Business, Energy and Industrial Strategy and Malaysian Industry-Government Group for High Technology (MIGHT) and delivered by the British Council and PlaTCOM Ventures. The authors are grate-

ful to One Team Networks Sdn Bhd, in Malaysia as our principal collaborator of Malaysia for the Dengue Tech Challenge 2016.

The authors are grateful for the University of Strathclyde, Glasgow, U.K., and the Scottish Funding Council (SFC) for funding from the SFC Global Challenges Research Fund (GCRF) Escalator Fund and to the EPSRC and the University of Strathclyde for support for this work under the EPSRC Global Challenges Research Fund Institutional Award 2016 (EPSRC grant reference number EP/P511055/1).

DG is grateful to the Science Without Borders Program, Brazil, for a Special Visiting Fellowship (CNPq grant 30098/2014-7), with Professor E. Massad, Department of Legal Medicine, University of Sao Paulo, Sao Paulo, Brazil, and to the Leverhulme Trust for support from a Leverhulme Research Fellowship (RF-2015-88).

7 Conflict of Interests

The authors declare that there is no conflict of interests regarding the publication of this paper.

References

- [1] M. Amaku, F. Azevedo, M. N. Burattini, G. E. Coelho, F. A. Coutinho, D. Greenhalgh, L. F. Lopez, R. S. Motitsuki, A. Wilder-Smith and E. Massad. *Magnitude and Frequency Variations of Vector-Borne Infection Outbreaks Using the RossMacdonald Model: Explaining and Predicting Outbreaks of Dengue Fever*. *Epidemiology & Infection*, 144(16), (2016), pp.3435-60.
- [2] R. M. Anderson and R. M. May. *Infectious Diseases of Humans: Dynamics and Control*. Oxford Science Publications, Oxford, (1991).
- [3] M. Andraud, N. Hens, C. Marais and P. Beutels. *Dynamic Epidemiological Models for Dengue Transmission: a Systematic Review of Structural Approaches*. *PLoS ONE*, 7(11), (2012), p.e49085.
- [4] N. T. J. Bailey. *The Mathematical Theory of Infectious Diseases*. Second Edition, Griffin, (1975).
- [5] M. Derouich and A. Boutayeb. *Dengue Fever: Mathematical Modelling and Computer Simulation*. *Applied Mathematics and Computation*, 177(2), (2006), pp.528-544.
- [6] O. Diekmann, J.A.P. Heesterbeek and J.A.J. Metz. *On the Definition and the Computation of the Basic Reproduction Ratio R_0 in Models for Infectious Diseases in Heterogeneous Populations*. *Journal of Mathematical Biology*, 28(4), (1990), pp.365-382.
- [7] D. A. Focks, R. J. Brenner, J. Hayes and E. Daniels. *Transmission Thresholds for Dengue in terms of Aedes Aegypti Pupae per Person with Discussion of Their Utility in Source Reduction Efforts*. *The American Society of Tropical Medicine and Hygiene*, 62(1), (2000), pp. 11-18.
- [8] D. Greenhalgh, Y. Liang, W. A. Nazni, G. N. Teoh, H. L. Lim and E. Massad. *Modelling the Effect of a Novel Auto-Dissemination Trap on the Spread of*

- Dengue in High-Rise Condominia, Malaysia.* Journal of Biological Systems, 26(4), (2018), pp.553-578.
- [9] A. Hasnan, N. C. Dom, H., Rosly and C. S. Tiong. *Quantifying the Distribution and Abundance of Aedes Mosquitoes in Dengue Risk Areas in Shah Alam, Selangor.* Procedia-Social and Behavioral Sciences, 234, (2016), pp.154-163.
- [10] idengue. Retrieved from <http://idengue.remotesensing.gov.my/idengue/\linebreakcontent/statistik.pdf>, last accessed 10/04/2018.
- [11] I. H. Ishah, B. Kamgang, S. S. Ibrahim, J. M. Riveron, H. Irving and C. S. Wondji. *Pyrethroid Resistance in Malaysian Populations of Dengue Vector Aedes Aegypti is Mediated by CYP9 Family of Cytochrome P450 Genes.* PLoS Neglected Tropical Diseases, 11(1), (2017).
- [12] Jafaruddin, S. W. Indratno, N. Nuraini, A. K. Supriatna and E. Soewono. *Estimation of the Basic Reproductive Ratio for Dengue Fever at the Take-Off Period of Dengue Infection.* Computational and Mathematical Methods in Medicine, Volume 2015, (2015), 14 pages.
- [13] C. A. Koay. *Personal Communication.* (2016).
- [14] H. L. Lee, A. Rohani, M. S. Khadri, W. A. Nazni, H. Rozilawati, A. H. Nurulhusna, A. H. Nor Afizah, A. Roziyah, R. Rosilawati and C. H. Tech. *Dengue Vector Control in Malaysia - Challenges and Recent Advances.* The International Medical Journal Malaysia, 14(1), (2015), pp.11-16.
- [15] S.M. Liew, E. M. Khoo, B. K. Ho, Y. K. Lee, M. Omar, V. Ayadurai, F. M. Yusoff, Z. Suli, R. N. Mudin, P. P. Goh and K. Chinna. *Dengue in Malaysia: Factors Associated with Dengue Mortality from a National Registry.* PLoS ONE 11(6):e0157631. doi:10.1371/journal.pone.0157631, (2016).
- [16] G. Macdonald. *The Analysis of Equilibrium in Malaria.* Tropical Diseases Bulletin, 49(9), (1952), pp.813-829.
- [17] S. B. Maier, X. Huang, E. Massad, M. Amaku, M. N. Burattini and D. Greenhalgh. *Analysis of the Optimal Vaccination Age for Dengue in Brazil with a Tetravalent Dengue Vaccine.* Mathematical Biosciences, 294, (2017), pp.15-32.
- [18] Department of Statistics Malaysia. *Current Population Estimates, Malaysia, 2016-2017.* Press Release, (2017).
- [19] Department of Statistics Malaysia. *Abridged Life Tables, Malaysia, 2015-2017.* Press Release, (2017).
- [20] Department of Statistics Malaysia, Official Portal. *Population & Demography.* Retrieved from https://www.dosm.gov.my/v1/index.php?r=column/ctwoByCat&parent_id=115&menu_id=L0pheU43NWJwRWVSzk1WdzQ4T1hUUT09.
- [21] E. Massad, F. A. B. Coutinho, M. N. Burattini and M. Amaku. *Estimation of R_0 from the Initial Phase of an Outbreak of a Vector-Borne Infection.* Tropical Medicine and International Health, 15(1), (2010), pp.120-126.
- [22] E. Massad, F. A. B. Coutinho, M. N. Burattini and L. R. Lopez. *The Risk of Yellow Fever in a Dengue-Infested Area.* Transactions of the Royal Society of Tropical Medicine and Hygiene, 95, (2001), pp.370-374.
- [23] P. R. Packierisamy, C. Ng, M. Dahlui, J. Inbaraj, V. K. Balan, Y. A. Halasa, D. S. Shepard. *Cost of Dengue Vector Control Activities in Malaysia.* The

- American Journal of Tropical Medicine and Hygiene, 93(5), (2015), pp.1020-1027.
- [24] M.G. Roberts and J.A.P. Heesterbeek. *A New Method for Estimating the Effort Required to Control an Infectious Disease*. Proceedings of the Royal Society of London B: Biological Sciences, 270(1522), (2003), pp.1359-1364.
- [25] R. P. Sanches and E. Massad. *A Comparative Analysis of Three Different Methods for the Estimation of the Basic Reproduction Number of Dengue*. Infectious Disease Modelling, 1(1), (2016), pp.88-100.
- [26] Singapore National Environment Agency. Retrieved from <http://www.nea.gov.sg/public-health/dengue/the-aedes-mosquito>, last accessed on 13th March 2017.
- [27] P. Van den Driessche. *Reproduction Numbers of Infectious Disease Models*. Infectious Disease Modelling, 2(3), (2017), pp.288-303.
- [28] P. Van den Driessche and J. Watmough. *Reproduction Numbers and Subthreshold Endemic Equilibria for Compartmental Models of Disease Transmission*. Mathematical Biosciences, 180, (2002), pp.29-48.
- [29] P. Van den Driessche and J. Watmough. *Further Notes on the Basic Reproduction Number*. In: Mathematical Epidemiology, Eds. F. Brauer, P. Van den Driessche and J. Wu, Springer (2008), pp.159-178.
- [30] World Health Organization. *Dengue Control*. Retrieved from <http://www.who.int/denguecontrol/disease/en/>, last accessed on 5th April 2018.
- [31] M.J. Wonham and M.A. Lewis. *A Comparative Analysis of Models for the West Nile Virus*. In: Mathematical Epidemiology, Eds. F. Brauer, P. Van den Driessche and J. Wu, Springer (2008), pp.365-390.
- [32] Centers for Disease Control and Prevention. *Zika Virus*. Retrieved from <https://www.cdc.gov/zika/vector/range.html>, last accessed on 20th May 2018.