

Fluid Sensors

UniSensors System overview



UniTemp Temperature Sensor


**Sealing Cone M18x1
FFATxxx**
Temperature Range

0...140°C

Probe Length

 44 mm
103,5 mm

Output Function

 1 × Analog Output, 1 × Switching Output
1 × Analog Output, 1 × Relay Output
2 × Switching Output

**Screw-in adapter for G1/4"
ZH1Cxxx**

 18 mm
16 mm

**Screw-in adapter for G1/2"
ZH1Cxxx**

 6 mm
42 mm
14 mm

**Screw-in adapter for NPT
ZH1Cxxx**

 G1/4", 18 mm
G1/2", 6 mm

**Screw-in adapter
ZH4Cxxx**

 12 mm
40 mm

G1/4" FFATxxx
Temperature Range

0...140°C

Probe Length

10 mm

Output Function

 1 × Analog Output, 1 × Switching Output
1 × Analog Output, 1 × Relay Output
2 × Switching Output

**T-Fittings
ZH3Cxxx**

 3 × G1/4"
3 × G 1/4" Adapter for
minimal flow V4A
3 × G 1/4" Adapter for
minimal flow Alu

**Sealing
ZH5Gxxx**


for G1/4"

G1/2" FFATxxx
Temperature Range

0...140°C

Probe Length

10 mm

Output Function

 1 × Analog Output, 1 × Switching Output
1 × Analog Output, 1 × Relay Output
2 × Switching Output

**T-Fittings
ZH3Cxxx**

 2 × G 3/4", 1 × G 1/2"
3 × G 1/2"

**Screw-in adapter
ZH4Cxxx**

 with undercut
without undercut

**Sealing
ZH5Gxxx**


for G1/4"

**G1/2" CIP
FFATxxx/FFXTxxx**
Temperature Range

0...140°C / 0...200°C

Probe Length

 10 mm
60 mm

Output Function

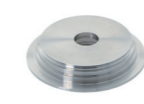
 1 × Analog Output, 1 × Switching Output
1 × Analog Output, 1 × Relay Output
2 × Switching Output

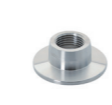
**T-Fittings
ZH3Cxxx**

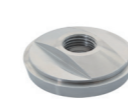
 DN25
DN50

**Screw-in adapter
ZH4Cxxx**


19 mm

**Varivent®
ZH7Cxxx**

 F (DN32/25)
N (DN50/40)

**Tri-Clamp
ZH7Cxxx**

 Ø34 mm
Ø50,5 mm
Ø64 mm

**Diary Pipe
ZH7Cxxx**

 DN25
DN40
DN50

**Compression Ring
FFXTxxx**
Temperature Range

0...200°C

Probe Length

110 mm

Output Function

 1 × Analog Output, 1 × Switching Output
1 × Analog Output, 1 × Relay Output
2 × Switching Output

**Cutting-ring connector
ZH6Cxxx**

 for G1/4"
for G1/2"

**Clamping-ring connector
ZH6Cxxx**

 for G1/4"
for G1/2"

**Sealing
ZH5Gxxx**

 for G1/4"
for G1/2"

UniFlow Flow Sensor



**Sealing Cone M18x1
FFAFxxx**

Flow Sensor

10...100 cm/s (Oil)
15...200 cm/s (Water)
10...300 cm/s (Water)

Probe Length

44 mm
103,5 mm

Output Function

2 × Switching Output (Flow/Flow)
2 × Switching Output (Flow/Temp)
1 × Analog Output (Flow / Temp), 1 × Switching Output
1 × Analog Output (Flow / Temp), 1 × Relay Output

Screw-in adapter for G1/4"
ZH1Cxxx



18 mm
16 mm

Screw-in adapter for G1/2"
ZH1Cxxx



6 mm
42 mm
14 mm

Screw-in adapter for NPT
ZH1Cxxx



G1/4", 18 mm
G1/2", 6 mm

Screw-in adapter
ZH4Cxxx



12 mm
40 mm



**G1/4"
FFAFxxx**

Flow Sensor

10...100 cm/s (Oil)
15...200 cm/s (Water)
10...300 cm/s (Water)

Probe Length

10 mm

Output Function

2 × Switching Output (Flow/Flow)
2 × Switching Output (Flow/Temp)
1 × Analog Output (Flow / Temp), 1 × Switching Output
1 × Analog Output (Flow / Temp), 1 × Relay Output

T-Fittings
ZH3Cxxx



3 × G1/4"
3 × G 1/4" Adapter for minimal flow V4A
3 × G 1/4" Adapter for minimal flow Alu

Sealing
ZH5Gxxx



for G1/4"



**G1/2"
FFAFxxx**

Flow Sensor

10...100 cm/s (Oil)
15...200 cm/s (Water)
10...300 cm/s (Water)

Probe Length

10 mm

Output Function

2 × Switching Output (Flow/Flow)
2 × Switching Output (Flow/Temp)
1 × Analog Output (Flow / Temp), 1 × Switching Output
1 × Analog Output (Flow / Temp), 1 × Relay Output

T-Fittings
ZH3Cxxx



2 × G 3/4", 1 × G 1/2"
3 × G 1/2"

Screw-in adapter
ZH4Cxxx



with undercut
without undercut

Sealing
ZH5Gxxx



for G1/4"



**G1/2" CIP
FFAFxxx / FFXFxxx**

Flow Sensor

15...100 cm/s (Oil)
10...300 cm/s (Water)

Probe Length

10 mm
60 mm

Output Function

2 × Switching Output (Flow/Flow)
2 × Switching Output (Flow/Temp)
1 × Analog Output (Flow / Temp), 1 × Switching Output
1 × Analog Output (Flow / Temp), 1 × Relay Output

T-Fittings
ZH3Cxxx



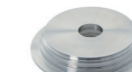
DN25
DN50

Screw-in adapter
ZH4Cxxx



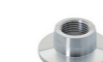
19 mm

Varivent®
ZH7Cxxx



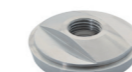
F (DN32/25)
N (DN50/40)

Tri-Clamp
ZH7Cxxx



Ø34 mm
Ø50,5 mm
Ø64 mm

Diary Pipe
ZH7Cxxx



DN25
DN40
DN50



**Dichtkegel M18 x 1
FFAFxxx**

Flow Sensor

0...35 l/min (Water)
0...60 l/min (Water)
0...100 l/min (Water)

Probe Length

44 mm
G1/2", G 3/4", G 1"


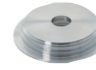
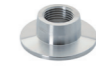
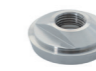


Output Function

2 × Switching Output (Flow/Flow)

1 × Analog Output (Flow / Temp), 1 × Switching Output

UniBar Pressure Sensors



G1/8" Internal Thread FFAPxxx	G1/4" Internal Thread FFAPxxx / FFMPxxx	G3/8" External Thread FFAPxxx / FFMPxxx	G1/2" Internal Thread FFAPxxx / FFMPxxx	G1/2" External Thread FFAPxxx / FFMPxxx	G1/2" CIP FFAPxxx / FFMPxxx
Pressure Range -1...10 bar	Pressure Range 0...600 bar	Pressure Range 0...600 bar	Pressure Range -1...600 bar	Pressure Range 0...600 bar	Pressure Range 0...600 bar
Output Function 1 × Analog Output, 1 × Switching Output 1 × Analog Output, 1 × Relay Output 2 × Switching Output	Output Function 1 × Analog Output, 1 × Switching Output 1 × Analog Output, 1 × Relay Output 2 × Switching Output	Output Function 1 × Analog Output, 1 × Switching Output 1 × Analog Output, 1 × Relay Output 2 × Switching Output	Output Function 1 × Analog Output, 1 × Switching Output 1 × Analog Output, 1 × Relay Output 2 × Switching Output	Output Function 1 × Analog Output, 1 × Switching Output 1 × Analog Output, 1 × Relay Output 2 × Switching Output	Output Function 1 × Analog Output, 1 × Switching Output 1 × Analog Output, 1 × Relay Output 2 × Switching Output
				Screw-in adapter ZH4Cxxx  with undercut without undercut	Varivent® ZH7Cxxx  F (DN32/25) N (DN50/40)
					Tri-Clamp ZH7Cxxx  Ø34 mm Ø50,5 mm Ø64 mm
					Diary Pipe ZH7Cxxx  DN25 DN40 DN50
					T-Fittings ZH3Cxxx  DN25 DN50
					Screw-in adapter ZH4Cxxx 

optional
necessary