

PVC hose, light

Application

- ♦ flexible hose/ ducting for gases and for dust, powder, fibres
- ♦ extraction unit, dedusting system, filter system, oil mist extraction
- ♦ galvanic extraction
- ♦ chemical industry: chemical vapours, vapour return hose at loading arm, paint steam, spray mist extraction
- ♦ X-ray machine: cable protection conduit (special type on request)
- ♦ heating hose: exterior hose as protection hose

Properties

- ♦ light weight

- ♦ highly flexible + compressible 3:1
- ♦ good resistance to alkalis and acids
- ♦ good resistance to chemicals
- ♦ phthalate-free
- ♦ conforms to RoHS guideline
- ♦ REACH according to --> Technology / Technical Information / REACH

Temperature Range

- ♦ -20°C to 70°C
- ♦ short time to 80°C

Design

- ♦ patented PROTAPE® tape hose
- ♦ spring steel wire integrated in wall
- ♦ wall: high grade soft PVC
- ♦ wall thickness 0,5 mm approx.

Delivery variants

- ♦ further diameters and lengths available on request
- ♦ grey (standard)
- ♦ special colours: transparent, full coloured
- ♦ customer-specific branding
- ♦ ID \geq 2"/50-51mm compressed packed in poly bag (low transportation cost / risk, minimum storage size), ID $<$ 2"/50-51mm not compressed, wrapped in a coil

I.D.	outer \varnothing	Pressure	Vacuum	Bending Radius	Weight	Dimensions in Stock	Production Lengths	Order No.
(in / mm)	(mm)	(bar)	(bar)	(mm)	(kg/m)	(m)	(m)	
- / 30	37.00	0,930	0,200	22.00	0.24	-	5 10	310-0030-0000
1,25 / 32	39.00	0,875	0,200	23.00	0.26	-	5 10	310-0032-0000
1,5 / 38	45.00	0,740	0,185	26.00	0.30	-	5 10	310-0038-0000
- / 40	47.00	0,705	0,180	27.00	0.32	10	5 15	310-0040-0000
2 / 50-51	58.00	0,410	0,155	33.00	0.31	5 10	15	310-0050-0000
- / 55	63.00	0,370	0,140	36.00	0.33	-	5 10	310-0055-0000
2,36 / 60	68.00	0,340	0,120	38.00	0.36	10	5 15	310-0060-0000
2,5 / 63-65	73.00	0,315	0,105	41.00	0.39	-	5 10 15	310-0065-0000
- / 70	78.00	0,295	0,090	43.00	0.42	-	5 10	310-0070-0000
3 / 75-76	83.00	0,275	0,085	46.00	0.45	10	5 15	310-0075-0000
- / 80	88.00	0,255	0,075	48.00	0.47	10	5 15	310-0080-0000
3,5 / 89-90	98.00	0,230	0,065	53.00	0.53	10	5 15	310-0090-0000
4 / 100-102	108.00	0,205	0,050	58.00	0.57	5 10	15	310-0100-0000
- / 110	118.00	0,185	0,045	63.00	0.62	10	5 15	310-0110-0000
4,5 / 114-115	123.00	0,180	0,045	66.00	0.65	-	5 10	310-0115-0000
4,72 / 120	128.00	0,170	0,045	68.00	0.68	10	5	310-0120-0000
5 / 125-127	133.00	0,165	0,035	71.00	0.71	5 10	15	310-0125-0000
- / 130	138.00	0,160	0,035	73.00	0.73	10	5 15	310-0130-0000
5,5 / 140	148.00	0,145	0,035	78.00	0.79	-	5 10 15	310-0140-0000
6 / 150-152	158.00	0,135	0,035	83.00	0.84	10	5 15	310-0150-0000
6,3 / 160	168.00	0,130	0,030	88.00	0.87	5 10	15	310-0160-0000
7 / 178-180	188.00	0,115	0,025	98.00	1.00	-	5 10 15	310-0180-0000
8 / 200-203	208.00	0,105	0,025	108.00	1.11	5 10	15	310-0200-0000
- / 225	233.00	0,090	0,015	121.00	1.25	-	5 10 15	310-0225-0000

Overpressure and underpressure are recommended threshold operating values, products can be subjected to higher loads upon request. The bending radius is measured through the inside of the hose arch. The right to make technical modifications is reserved. All values determined at 20°C and are approx.

I.D.	outer Ø	Pressure	Vacuum	Bending Radius	Weight	Dimensions in Stock	Production Lengths	Order No.
(in / mm)	(mm)	(bar)	(bar)	(mm)	(kg/m)	(m)	(m)	
- / 250	258.00	0,085	0,010	133.00	1.39	-	5 10	310-0250-0000
- / 300	309.00	0,070	0,010	159.00	1.95	-	5 10	310-0300-0000

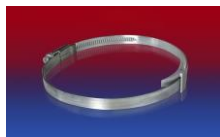
Sondertyp DB.P1: größere Steigung, höhere Stauchbarkeit, 0.4mm Wandstärke, weniger Gewicht, Lagerware nur in Italien

- / 30	35.00	0,850	0,140	18.00	0.14	-	10 15 20	310-0030-2025
- / 40	45.00	0,645	0,105	24.00	0.18	-	10 15 20	310-0040-2025
2 / 50-51	56.00	0,515	0,086	30.00	0.23	-	10 15 20	310-0050-2025
2,36 / 60	65.00	0,430	0,072	36.00	0.27	-	10 15 20	310-0060-2025
- / 70	75.00	0,370	0,060	42.00	0.32	-	10 15 20	310-0070-2025
3 / 75-76	81.00	0,345	0,060	45.00	0.34	-	10 15 20	310-0075-2025
- / 80	85.00	0,325	0,055	48.00	0.36	-	10 15 20	310-0080-2025
3,5 / 89-90	95.00	0,290	0,050	53.00	0.40	-	10 15 20	310-0090-2025
4 / 100-102	108.00	0,260	0,045	60.00	0.38	-	10 15 20	310-0100-2025
- / 110	117.00	0,240	0,040	66.00	0.41	-	10 15 20	310-0110-2025
4,72 / 120	127.00	0,220	0,035	72.00	0.45	-	10 15 20	310-0120-2025
5 / 125-127	132.00	0,220	0,035	75.00	0.47	-	10 15 20	310-0125-2025
- / 130	137.00	0,200	0,033	78.00	0.49	-	5 6 15 20	310-0130-2025
5,5 / 140	147.00	0,185	0,030	84.00	0.52	-	10 15 20	310-0140-2025
6 / 150-152	156.00	0,175	0,030	90.00	0.56	-	10 15 20	310-0150-2025
6,3 / 160	167.00	0,165	0,030	96.00	0.60	-	10 15 20	310-0160-2025
7 / 178-180	186.00	0,145	0,025	107.00	0.67	-	10 15 20	310-0180-2025
8 / 200-203	210.00	0,130	0,022	120.00	0.72	-	10 15 20	310-0200-2025
- / 225	234.00	0,115	0,019	135.00	0.81	-	10 15 20	310-0225-2025
- / 250	259.00	0,105	0,018	150.00	0.90	-	10 15 20	310-0250-2025
- / 275	284.00	0,095	0,016	165.00	1.00	-	10 15 20	310-0275-2025
- / 300	309.00	0,090	0,015	180.00	1.08	-	10 15 20	310-0300-2025
- / 350	360.00	0,075	0,012	210.00	1.36	-	10 15	310-0350-2025
- / 400	410.00	0,065	0,011	240.00	1.50	-	10 15	310-0400-2025
- / 450	460.00	0,060	0,010	270.00	1.82	-	10 15	310-0450-2025
- / 500	510.00	0,050	0,009	300.00	2.02	-	10 15	310-0500-2025

Accessories



CONNECT 223



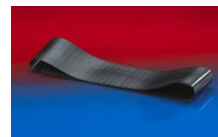
CLAMP 210 BRIDGE CLAMP



CLAMP 213



CONNECT 270-271



CONNECT 228



CLAMP 212



CLAMP 217

Overpressure and underpressure are recommended threshold operating values, products can be subjected to higher loads upon request. The bending radius is measured through the inside of the hose arch. The right to make technical modifications is reserved. All values determined at 20°C and are approx..