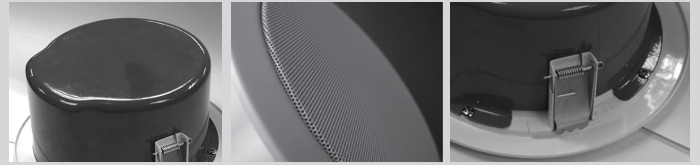




Protecting Your Human Assets During Emergency

## CF 561E Fire Rated Ceiling Loudspeaker

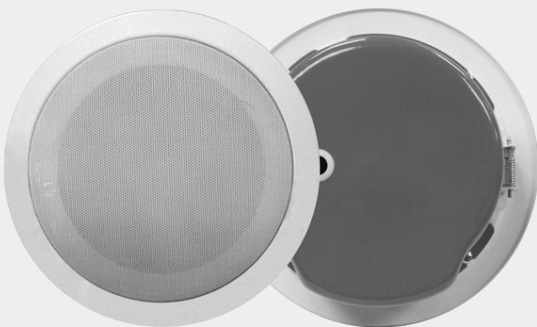


The CF 561E Fire Rated Ceiling Loudspeaker is specially designed with a steel fire dome to prevent fire entering the cavity via the loudspeaker. The speaker is designed in compliance with EN 54-24 and BS 5839-1: 2002 standards. It is suitable for low ceiling applications such as shopping malls, supermarkets, offices and restaurants.

These ceiling loudspeakers are capable of reproducing voice announcements and background music with high clarity. The unit's impeccable sound quality and broadband frequency response are attributed to its 120 mm dual cone full range loudspeaker component to accurately reproduce the source signal with minimal sound discolouration.

Mounted on to a metal baffle and an aesthetically pleasing front metal mesh, the model comes with a multiple impedance line matching transformer, suitable for 70 V or 100 V distributed loudspeaker system with a maximum power handling of 6 W rated at 100 V.

- Readily installed with a fire dome, ceramic terminal block and thermal fuse in compliance with EN 54-24 and BS 5839-1: 2002 standards.
- White circular flush-mounted metal baffle with an aesthetically pleasing front metal mesh.
- 120mm dual cone full range loudspeaker component
- Flush mounted to the ceiling with its integrated spring mounting mechanism for ease of installation and improved aesthetics.
- Ready fitted line matching transformer with multiple power tapings of 3W and 6W.
- Wide coverage angle reduces the number of loudspeaker units required for evenly distributed sound coverage.



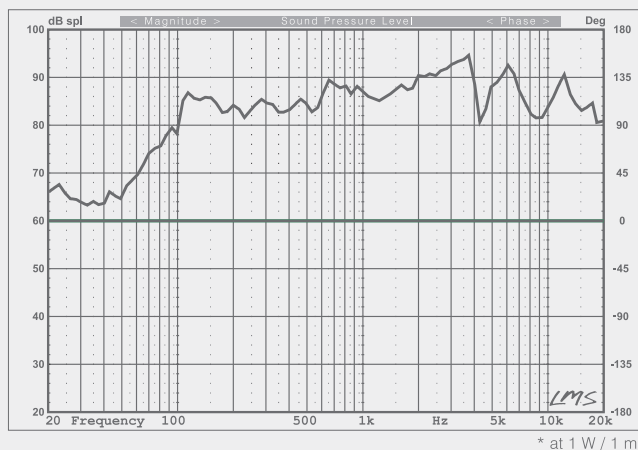
**CF 561E**



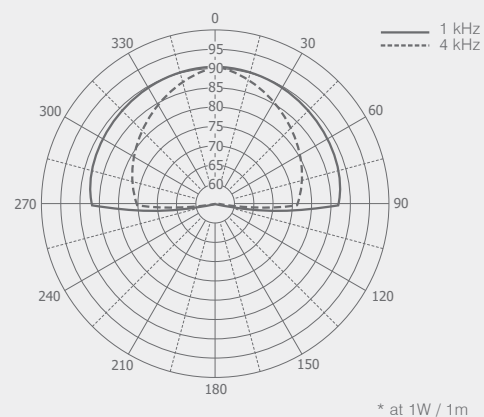
### Technical Specifications

	CF 561E
Rated Input (100 V)	100 V : 6 W (6 – 3W) 70 V : 3 W ( 3 – 1.5W)
Maximum Power	9 W
Rated Impedance	1.7 k $\Omega$ ( 1.7 - 3.3 k $\Omega$ )
Sensitivity (1W / rated at 1m)	91/99 dB
Coverage Angle (1 kHz, -6 dB)	180 deg.
Frequency Response	90 Hz ~ 20 kHz
Speaker Component	120mm dual cone full range Loudspeaker
Safety	Acc. to EN 60065 EN 54-24 BS 5839-1: 2002
Material & Finish	Metal Grille and Mesh; White Metal Back Enclosure; Red
Dimensions	Dia. 200 x 100 mm
Weight	1.0 kg
Mounting Method	Spring

### Frequency Response



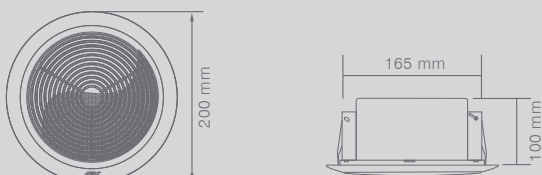
### SPL Polar Plot



### Engineers' Specifications

The ceiling loudspeaker unit shall consist of a 120mm dual cone full range component loudspeaker driver, mounted on to a 200 mm circular metal baffle. The unit shall have a torsion spring assembly to secure the loudspeaker unit to the ceiling. A fine epoxy coated metal perforated mesh shall cover the grille of the unit. The unit shall have a fire rated metal dome enclosure fitted on the rear of the unit. The speaker shall come with a ceramic terminal block and thermal fuse designed in

compliance with EN 54-24 and BS 5839-1: 2002 standards. A line matching transformer shall be provided with multiple tapings of 6 and 3 W rated at 100 V (3, 1.5 rated at 70 V) line distributed loudspeaker system. The loudspeaker unit shall have a useable frequency range of 90 Hz ~ 20 kHz and a minimum SPL of 91 dB at 1 m/W with the coverage angle of 180 deg. at 1 kHz (-6 dB).



CF 561E