



2023 PRODUCT CATALOGUE

New collection of SPC Flooring from MUJI+ that bring out the modern concept to make your home get an aesthetic vibes and luxury.

PRODUCT : MUJI+ SPC 4mm



MC 101

Contemporary

Wear Layer: 0.3mm

Size: 1220mm x 183mm x 4mm

Quantity: 12pcs/Box

Coverage: 28.83sqft

MC 102

Classic

Wear Layer: 0.3mm

Size: 1220mm x 183mm x 4mm

Quantity: 12pcs/Box

Coverage: 28.83sqft



MM 103

Minimalist

Wear Layer: 0.3mm

Size: 1220mm x 183mm x 4mm

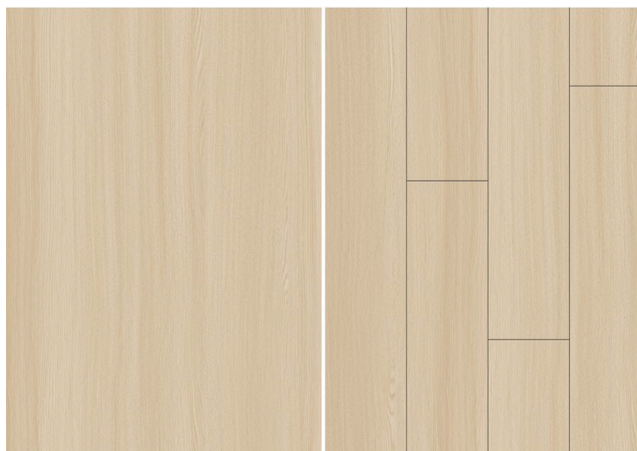
Quantity: 12pcs/Box

Coverage: 28.83sqft



*Remarks : Colour may be vary from actual products

PRODUCT : MUJI+ SPC 4mm



■ MN 104

Nordic

Wear Layer: 0.3mm

Size: 1220mm x 183mm x 4mm

Quantity: 12pcs/Box

Coverage: 28.83sqft

■ MN 105

Native

Wear Layer: 0.3mm

Size: 1220mm x 183mm x 4mm

Quantity: 12pcs/Box

Coverage: 28.83sqft



■ MR 106

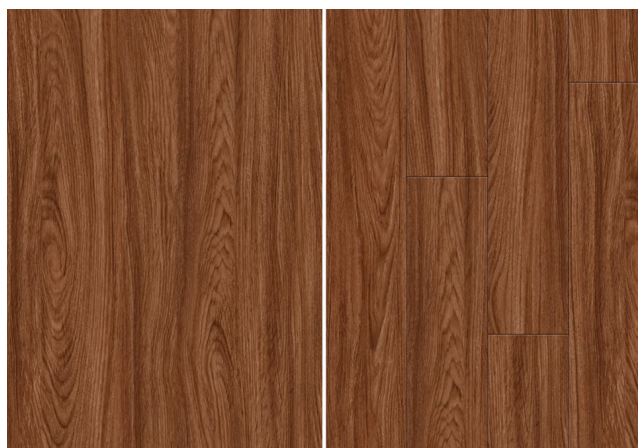
Rustic

Wear Layer: 0.3mm

Size: 1220mm x 183mm x 4mm

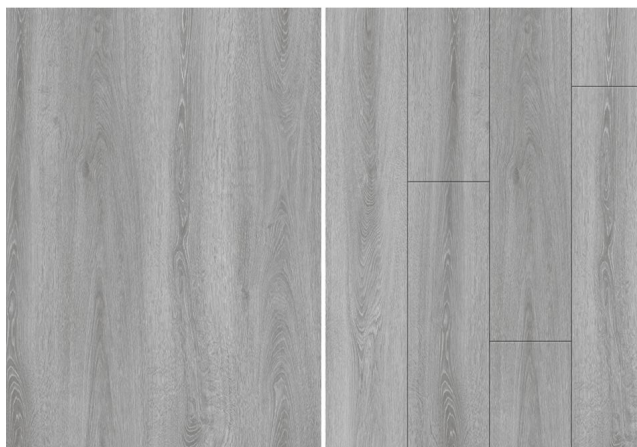
Quantity: 12pcs/Box

Coverage: 28.83sqft



*Remarks : Colour may be vary from actual products

PRODUCT : MUJI+ SPC 4mm



■ MU 107

Urban

Wear Layer: 0.3mm

Size: 1220mm x 183mm x 4mm

Quantity: 12pcs/Box

Coverage: 28.83sqft

■ MV 108

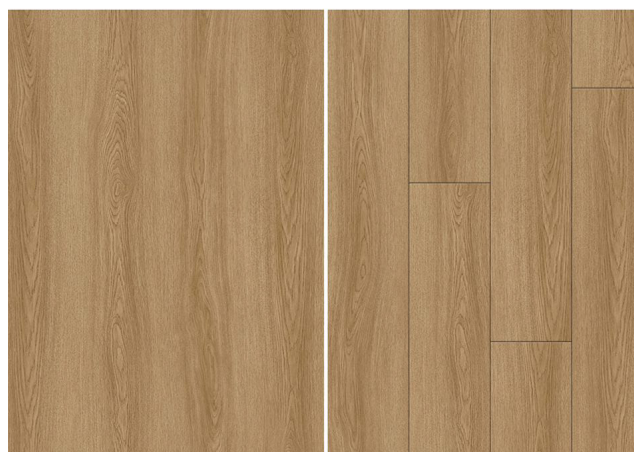
Vintage

Wear Layer: 0.3mm

Size: 1220mm x 183mm x 4mm

Quantity: 12pcs/Box

Coverage: 28.83sqft



*Remarks : Colour may be vary from actual products

INSTALLATION GUIDES

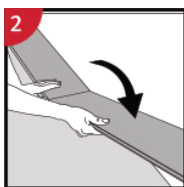
General installation instructions



First plank, first row

Place a spacer with predicted thickness to the left and position the panel against the wall.

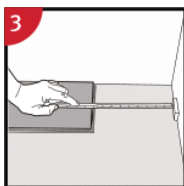
Later, after 3 rows, you can easily position the flooring against the front wall with predicted spacers.



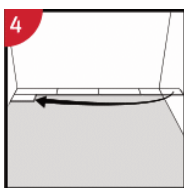
Second plank, first row

Press the short end of the next plank at an angle to the first one, and then fold down.

Complete the first row in the same way.



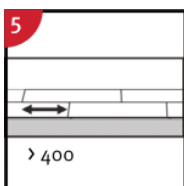
At the end of the first row, put a spacer to the wall and measure the length of the last panel to fit.



Second row

First panel min length > 400 mm.

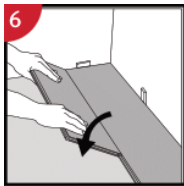
Put a spacer against the left wall.



Staggered joint distance i.e. minimum distance between short ends of panels in parallel rows shall not be less than the given length.

INSTALLATION GUIDES

General installation instructions

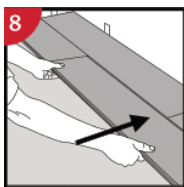


Place the plank and angle against the plank in the previous row, press forward and fold down at the same time. Leave the plank in a somewhat up angled position when the planks start to lock. To make this further easier, a wedge with the suitable angle can be placed under the plank near the short side joint as support.

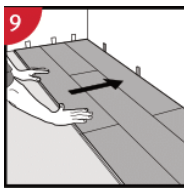


Second plank, second row

Place the short end of the plank at an angle against the previous installed plank and fold down all the way.



Push to slide the plank against the row in front so it aligns with the first plank. Put it down like the first plank positioned tightly together. The first / previous plank can now be folded completely down to horizontal position and if a wedge is used it can be moved to the next short end joint.



After 2-3 rows.

Adjust the distance to the front wall by placing distances.

Keep the distances in position during the entire time of installation and remove once the installation is completed.



Last row (and perhaps also first row).

Minimum width 50 mm. Place a spacer to the wall before measuring. Make a simple drawing tool (piece of wood with a hole) and mark the panel along the wall. Cut the panels lengthwise including the flexible tongues.

WARRANTY

MUJI+ SPC carries a limited 5 years warranty for products adhere to proper usage and maintenance conditions.

a. Joint Integrity :

MUJI+ SPC warrants that the locking system contained in our product (SPC Flooring) will not fail during the period of the warranty.

b. Manufacturing Defect :

MUJI+ SPC warrants that our SPC Flooring will be free from manufacturing defects during the period of the warranty.

What Is Excluded From These Warranties?

None of the distributors, retailers, or employees has the authority to alter the exclusions under any of our warranties.

The warranty only covers products to be free from defects in material and workmanship under normal use and service for which it was intended for, but only if it has been properly installed and operated according to the installation and maintenance procedures.

We exclude and shall not be liable for any repairs or replacements that may be required due to physical abuse of the product, misuse, alterations or modifications made to the product, improper handling, ordinary wear and tear, damage caused by installation or practices that are inconsistent and/or contrary to our recommendations, damage resulting from accident or causes not within the control of our company.

Our limited warranties constitute the only express warranties for the product purchased. For all non-consumer products, all warranties other than our limited warranties, express or implied, including any warranty of merchant ability or fitness for a particular purpose, will not be covered.

WARRANTY

General Terms and Conditions for SPC Flooring

Warranties apply to hidden defects that were not visible before or during the installation of the SPC Flooring. Material installed with visible defects is considered accepted by the consumer.

When the flooring is replaced, only new materials from the current product range at the time of the claim will be supplied by the distributor or retailer. There will be no other form of compensation than this 1 to 1 replacement.

Under joint integrity warranty, open joints of 0.2mm or less are not considered a defect. Improper installation, lack of continuous climate control or obstructions creating pinch points are specifically excluded by this warranty.

Intentional abuse, abnormal use or conditions in any way is not covered under these warranties. "Intentional abuse is any use of the flooring that is unreasonable considering the normal and expected uses of SPC, such as moving appliances across the floor without adequate protection. Abnormal use or conditions" includes, but is not limited to, damage from smoke, fire, storms or floods or other casualty events; damage caused by negligence or improper alterations of the original manufactured product.

These warranties do not apply to minor colour, shape or texture variations between samples or printed colour photography and the actual material. These warranties exclude damage to walls, subfloors, furniture and fixtures, trims, underlayment, mouldings or anything not related to SPC Flooring. Also, any damage caused by mould and mildew growth is not covered under these warranties.

These warranties do not apply to damage from exposure to extreme heat or sunlight exposure, dryness, or stains as a result of chemical or industrial products (other than recommended cleaning products). Window coverings should be used during periods of intense sunlight to avoid intense heating of flooring products.

Damage caused by hydrostatic pressure (pressure exerted by moisture or liquid under the floor that is transmitted to the surface) or other conditions that result in liquid or moisture below the floor is not covered under these warranties.

Installation related errors is excluded under these warranties. Material must be checked carefully for defects before and during installation and under sufficient lighting. Products with visible defects must not be installed under any circumstances. Customer must inform in writing of such defects within 15 days. After this time has elapsed, no further claims will be accepted.

ORIGINAL PURCHASE EVIDENCE MUST BE PRESENTED DURING CLAIM PROCESS.

PLEASE KEEP YOUR RECEIPT FROM THE ORIGINAL PURCHASER. RECEIPTS MUST BE PRESENTED IN THE EVENT OF A WARRANTY CLAIM IN ORDER TO VERIFY DATE AND PROOF OF PURCHASE TO RESOLVE ANY PROBLEMS THAT MAY OCCUR.