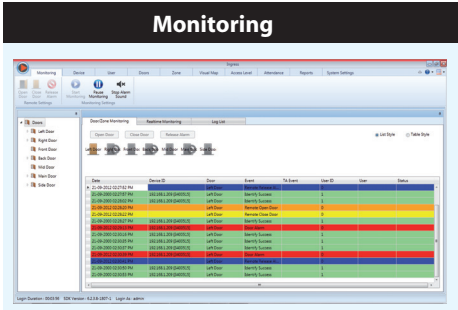
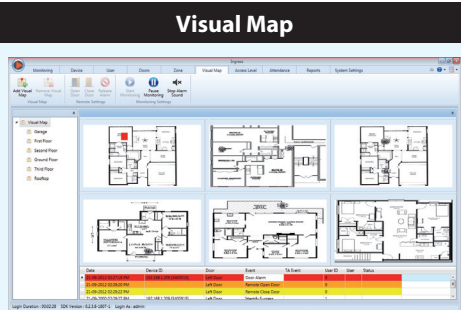


KEY FEATURES

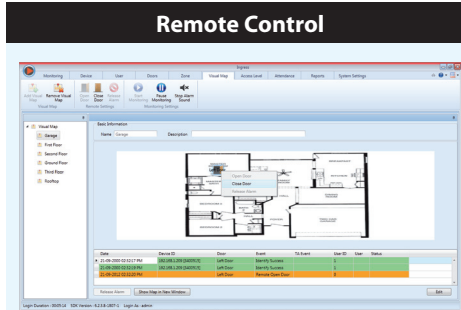
REAL-TIME MONITORING



Real-time access control event, fire alarm and transaction log monitoring.

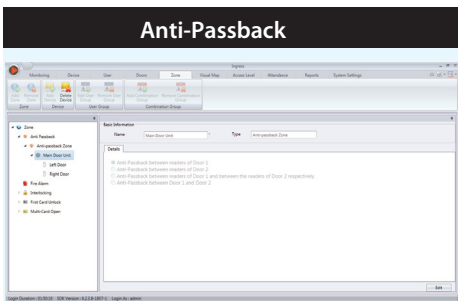


Intuitive graphical maps are completely customizable to let you monitor activities.

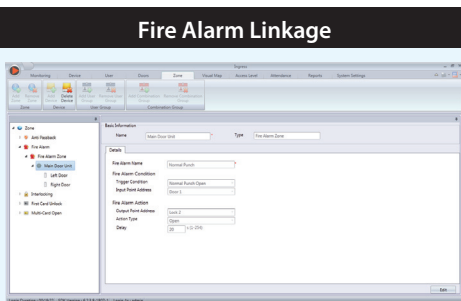


Control access activities directly from the monitoring station.

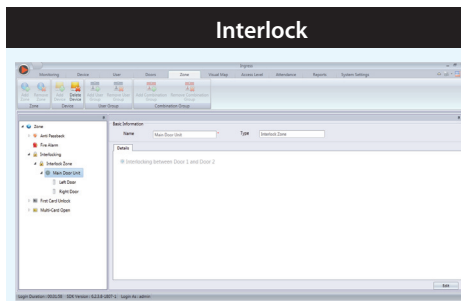
ACCESS CONTROL



A security mechanism preventing an access card or similar device from being used to enter an area a second time without first leaving it.

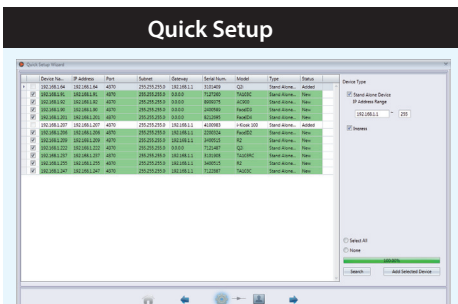


Allows the automatic unlocking of emergency fire doors in the event of a fire.

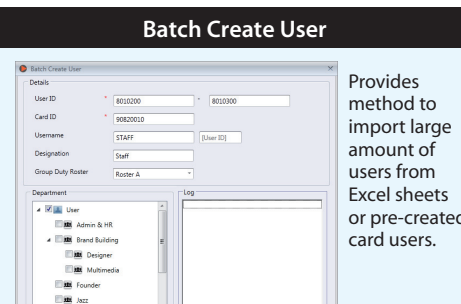


The interlock function enables extra security by ensuring a sequence where one door can only be released when other doors are closed.

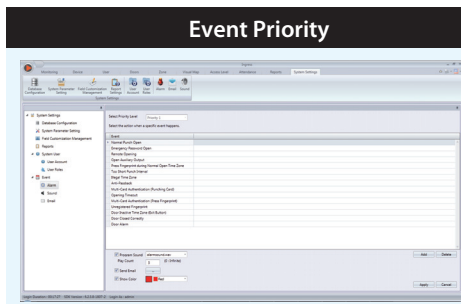
ADDITIONAL FEATURES



Built-in Quick Setup Wizard for easy initial startup.

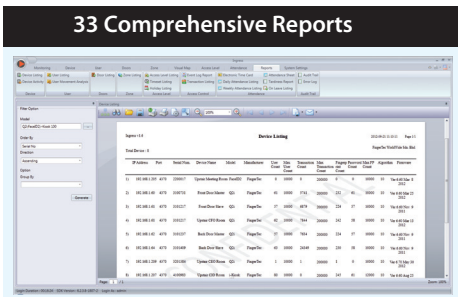


Provides method to import large amount of users from Excel sheets or pre-created card users.

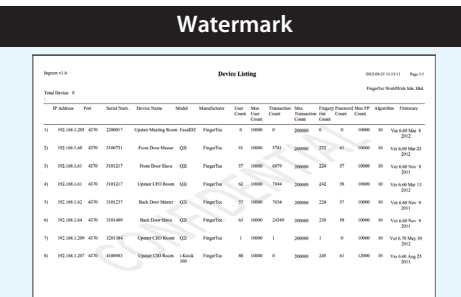


Configurable event priority, recipient email and sound alert.

ADVANCED REPORTING



Provides 33 comprehensive combinations of data listing, configuration, activity, audit trail, incident, time and attendance, and event reports.



User definable reports, with customizable watermark for background image.



Print and save reports into PDF, HTML, MHT, RTF, XLS, XLSX, CSV, TXT and JPEG.

ingress

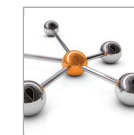
FINGERTEC

ingress

The Perfect System For Advanced Access Control

FingerTec's *Ingress* is an integrated access control management application that runs on the familiar MS Windows operating environment. The software is a complete solution for centralizing, managing, and monitoring door activity in FingerTec access control devices. Bundled together with the *Ingressus* Controller, *Ingress* is an advanced, easy to use, and IT-friendly software that provides elaborate access control features such as real-time monitoring, database administration and report management, all in a single unified system. Ideally suited for self-managed organizations of below 100-door environment, *Ingress* is also capable of seamlessly integrating its access control functions with alarm monitoring and other intrusion detection devices.

Ingress supports all standalone FingerTec access control models that use card, fingerprint and face recognition verification, and multiple terminals can be centralized in the *Ingressus* Network Control Panel for multiple-door monitoring.



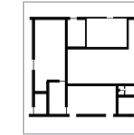
Centralized Management

Ingress is a server-client based software that supports surveillance from multiple PCs concurrently, while containing useful access monitoring features such as multi-level users, and user group privileges.



Integrated Time Attendance Features

Useful time attendance features such as weekly schedules, group & personal duty rosters and holiday settings are available, complete with 18 important attendance reports, such as daily attendance listing, and tardiness report.



Graphical Floor Maps

Ingress lets you insert graphical floor maps with configured animated icons for easy and instant tracking of door activity.



Configure Alerts & Notifications

Customize email, sound alerts or push notifications and get notified when certain door events are triggered. Push notifications are supported by both iOS and Android devices.



Real-Time Alarm and Event Monitoring

Access control surveillance has never been easier with the real-time alarm and event monitoring features available in *Ingress*. Prioritize events and alerts to optimize your security actions accordingly.



Data Analysis & Reporting

Ingress centralizes data and it generates 33 useful reports to better your security and business.



IP Camera Software Integration

Integrated with IP camera software from Milestone's XProtect series and cloud storage solutions from EpiCamera. This increases security by allowing visual observations of monitored areas as well as linking access control events to captured video clips or pictures.



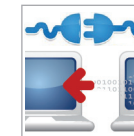
Easy Data Export and Integration

Supports import and export of user data, export of transaction logs and attendance data and the export function comes with template configuration for easy 3rd party software integration.



Database Backup and Restore

Data centralized in *Ingress* can be kept secure with the fully configurable automated database backup and restore facility.



Offline Alarm & Door Event

The alarm & door event information will be stored in the terminal once the server is down or the connection to the server is lost. These events will be retrieved by *Ingress* when the server is back up, preventing any loss of event logs.



Comprehensive Audit Trails Report

Ingress keeps data secure and accessible by providing in-depth activity logs and audit trails detailing the user activity and operation complete with its timestamp.



Live System Control

Ingress supports remote unlocking of doors, remote alarm releases and customized door unlocking schedules.



FEATURES

Express Setup

- Quick Setup Wizard to facilitate simple configuration during initial startup
- Automatically defines all necessary system components
- Innovative features reduce time required to configure the system and eliminates programming errors

Enhanced Software Security Features

- Optional fingerprint login for system administrators
- Screen-lock function; automatic logout after timeout period
- Full backup and restore of system data
- Detailed history records and audit trail functions for tracking past configuration changes

Access Control Reports

- 15 types of listing & event reports
- Comprehensive event filtering
- Quick-print and email action
- Supports digital watermark imprint
- Reports can be exported into 10 formats e.g: .xls, .txt, .csv

Easy Time Scheduling

- Provides up to 3 time zone settings per day
- Allows time-based access permission to be defined per weekday
- Provides holiday configuration & holiday time zone settings

User-Friendly Interface

- Change views, reorder columns, and modify & filter data for groups of users from a single screen
- Different user interface themes available for preference
- Simple-to-understand organization with Windows "tree structure" design, complete with ribbon-style menu layouts

Full Duplex Synchronization

- Fully synchronize data between device and database
- Easily synchronize data to device after changes are made
- Selectable single record or multiple records to be synchronized

Event Priority & Alerts

- Organize alarm alerts and set alarm priorities to optimize response time
- Configure event priorities from a total of 62 event types
- Offline door events, alarm events & terminal connection events
- Automatically sends email and notifications to defined recipients when an event is detected in the system
- Customizable sound alerts for every priority
- PUSH notifications are available for iOS and Android device users

Effortless Device Replacement

- Backup device and door settings or configuration
- Easily transfer settings to new replacement device

Efficient Management of Users

- Supports 10 levels of departments
- Track users card management records and history
- Detailed permissions and user rights for the access, display and control of subsystems
- Integration with OFIS-x and OFIS-y for fingerprint registration station

Powerful Access Control Settings

- Interlocking
- Anti-passback
- Multi-card operation
- Fire alarm linkage
- Multiple verification setting
- Door-always-open schedule

Integrated Monitoring

- Real-time alarm or event logs to ensure all events are completely documented (including messages and controls) for the entire system
- Remotely control door access, including unlocking doors and disarming alarms
- Display up to a maximum of 9 floor maps for real-time monitoring
- Graphic map display with animated icons for instant visibility of activity
- Multiple workstation monitoring capabilities

Time Attendance Functions

- Weekly schedules available with 3 pairs of IN/OUT columns for attendance monitoring
- Supports group or personal duty roster setup
- Supports leave and holiday management
- Generate attendance sheets, and instantly add, edit, or delete attendance records
- Provides 18 types of commonly used time attendance reports, eg: daily attendance listing, tardiness report, and on-leave listing.
- Terminal data audit list enables raw data checking and export
- Simple export for attendance data using the configurable export template format
- Post attendance data to SAGE UBS payroll easily. US payroll (ADP, BDB payroll services, Execupay, Millennium Payroll Solutions, MISYS, PAYCHEX, PayChoice, MYOB, QuickBooks, Attache)
- Timer feature for automatic download of data after a specified interval
- Support up to 9 digits of workcodes

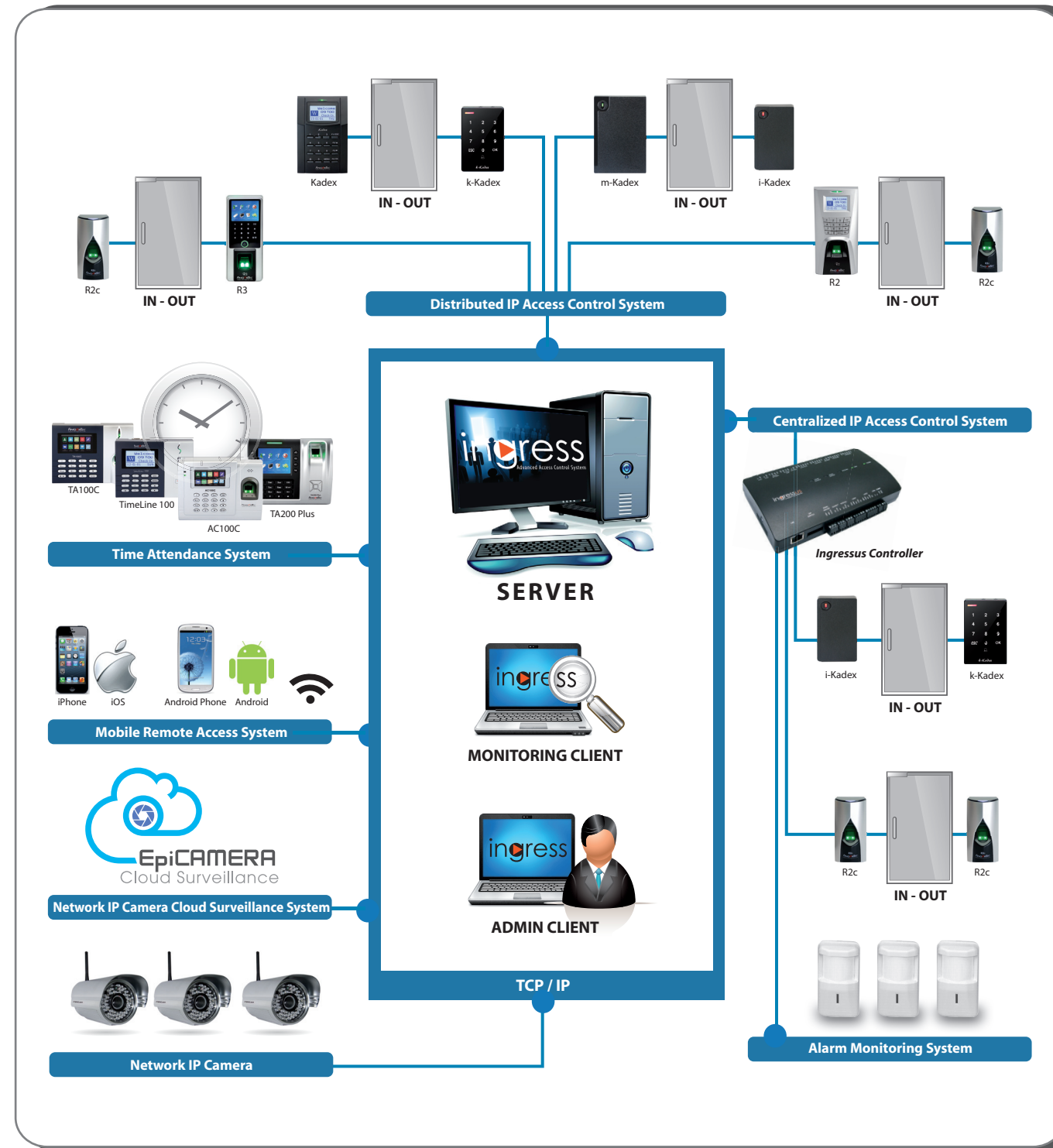
Additional Features

- Supports multiple languages
- Add users by batch
- Automatic search of devices over the network
- Multiple views for event monitoring
- Intelligently import users from 3rd party software
- Easy data grouping or filtering for viewing purposes

Integrated with IPC Video Surveillance Software Features

- Integrated with Milestone's XProtect series and EpiCamera's cloud storage solution
- Users can quickly track or playback captured video clips or pictures of the door event
- Supports live feed directly from the IP camera
- The Play Video Window supports frame selection, variable speed, pause and export to AVI and JPG files

SYSTEM DIAGRAM



HARDWARE REQUIREMENT

Server

- Operating system: Windows 7, Windows 8, Windows 10, Windows Server 2003/2008/2012/201 (32 or 64-bit)
- Processor: Intel® Core® 2 Duo 2.5 GHz or higher
- Memory: 3GB of RAM or higher
- Hard drive: 80GB
- Resolution: 1024 x 768 or higher

Client

- Operating system: Windows 7, Windows 8, Windows 10, Windows Server 2003/2008/2012/201 (32 or 64-bit)
- Processor: Intel® Core® 2 Duo 2.0 GHz or higher
- Memory: 2GB of RAM or higher
- Hard drive: 50GB
- Resolution: 1366 x 768 or higher

TECHNICAL SPECIFICATIONS OF INGRESSUS CONTROLLER



Description	Ingressus I	Ingressus II	Ingressus IV
Basic			
Dimension (L X W X H), mm	186 x 106 x 36		226 x 106 x 36
Power input		12V DC	
Operating temperature (°C)		0 - 55	
Operating humidity (%)		10 - 80	
CPU		32-bit, 400MHz	
Flash memory (MB)		128	
SDRAM (MB)		32	
Polarity protection		Yes	
Storage			
Fingerprints		3000	
Cards		30000	
Passwords		30000	
Transactions		100000	
Communications			
Communications with server	TCP/IP, RS485		
Quantity of terminal	2	4	4
Communication with terminals	2 x 26-bit Wiegand input. Each for 1 slave terminal (1 x RS485 input to support RS485 network) (max 2 units)	4 x 26-bit Wiegand input. Each for 1 slave terminal (1 x RS485 input to support RS 485 network) (max 4 units)	4 x 26-bit Wiegand input. Each for 1 slave terminal (1 x RS485 input to support RS 485 network) (max 8 units)
Input			
Push release button	1	2	4
Door sensor	1	2	4
AUX	1	2	4
Types of AUX input supported	Motion detector, passive DIR detector, curtain passive infrared detector, pet immunity PIR detector, two beam digital active infrared detector, heat detector		
Output			
Door lock (12VDC 10A form C relay)	1	2	4
AUX output (30VDC 2A form C relay)	1	2	4
Types of AUX output supported	Gas detector and compatible sensors, Piezo strobe siren, electronic siren		
Access control features			
Main Features	Door opening time (0-999s), Inter-locking (Ingressus II & IV only), Anti-pass back (Local only), Multi card unlocking, First card unlocking, Time zone (50), Holiday time zone, Permanent door release/lock time zone, Day light saving time zone, Continuous verification of users		
Security Features	Door force open alarm, Door open time out alarm, Fire linkage, Duress alarm, Door status and event (51 types)		
SOFTWARE			
Ingressus	Bundled		