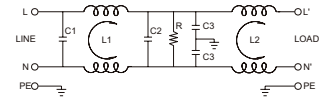
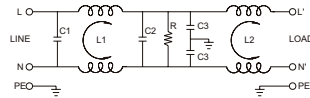
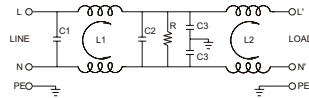


- Models from 3 to 30 A
- Elevated attenuation from 150 kHz to 30 MHz
- Elevated attenuation even on long cables
- Compact dimension



**NOTE**

(1) Produced on demand, contact our sales office for availability  
 (2) Isolation test need to be made in DC voltage, according to EN 60950, cause by the internal filter capacitors.



CODE TYPE	XF03DKBG5B F03DKBG5B (1)	XF06DKBG5B F06DKBG5B (1)	XF12DKBG5B F12DKBG5B
<b>GENERAL TECHNICAL DATA</b>			
Rated voltage	115-250 Vac ± 10%	115-250 Vac ± 10%	115-250 Vac ± 10%
Rated current	3 A	6 A	12 A
Leakage current	0.40 mA (115 Vac) / 0.80 mA (250 Vac)	0.40 mA (115 Vac) / 0.80 mA (250 Vac)	0.40 mA (115 Vac) / 0.80 mA (250 Vac)
Frequency	50...60 Hz	50...60 Hz	50...60 Hz
Operating temperature range	-25...+100°C	-25...+100°C	-25...+100°C
Isolation L/L	1.45 kVdc / 60 s [2]	1.45 kVdc / 60 s [2]	1.45 kVdc / 60 s [2]
Isolation L/PE	2.25 kVdc / 60 s [2]	2.25 kVdc / 60 s [2]	2.25 kVdc / 60 s [2]
Overvoltage category / Pollution degree	—	—	—
Protection degree	IP 00	IP 00	IP 00
Connection terminal IN/OUT	flat plug (from 3 to 20 A) / self-blocking nut (30 A)	flat plug (from 3 to 20 A) / self-blocking nut (30 A)	flat plug (from 3 to 20 A) / self-blocking nut (30 A)
Housing material	metallic	metallic	metallic
Dimension	64.5x34x30 mm	64.5x34x30 mm	64.5x34x30 mm
Approximate weight	—	—	—
Mounting information	screw fixing, on metal panel	screw fixing, on metal panel	screw fixing, on metal panel
<b>APPROVALS</b>			
<b>Common mode (L/PE) attenuation (dB)</b>			
0.15 MHz	20	15	10
0.5 MHz	30	20	20
1 MHz	35	25	22
5 MHz	45	40	35
10 MHz	50	45	45
30 MHz	45	45	40
<b>Differential mode (L/PE) attenuation (dB)</b>			
0.15 MHz	7	10	10
0.5 MHz	35	20	20
1 MHz	50	45	40
5 MHz	45	45	45
10 MHz	45	50	45
30 MHz	45	45	45
<b>ACCESSORIES</b>			
Marking tag	—	—	—