

Earthing & Short Circuit Protection Equipment

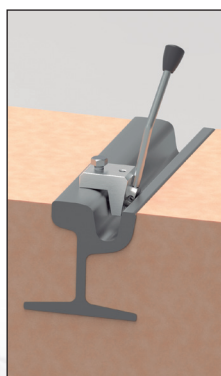
Safety

Catenary earthing equipment

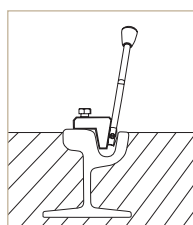
666 PATF-PDC-TTIR

Integrated earthing equipment for underground tramway rails. With one PDC clamp to enable earthing of lines for repair work.

According to IEC 61230 standard.



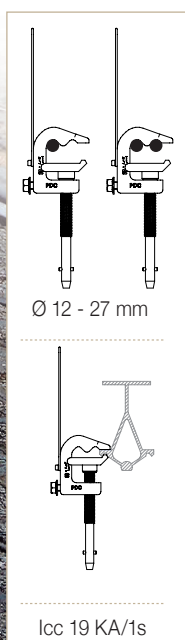
TTIR
Earth lathe



Icc 19 KA/1s



PDC
Medium voltage clamp



Icc 19 KA/1s

Composed of:

- 1 PDC aluminium alloy clamps with screw tighten and bayonet for cylindrical conductors with diameter between 12 and 27 mm.
- 1 copper cables with PVC insulation of 50 mm² section and 7 m of length.
- 1 TTIR milling earthing lathe.
- 1 nylon bags to store and transport the equipment

Code	Ref.	Short circuit current ICC Max.
666160	PATF-PDC-TTIR	13 KA/1s