

Clamps' Information

Earthing and Short - Circuit Equipment

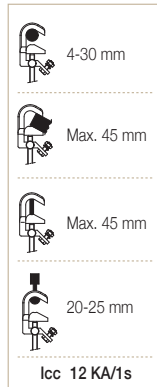
SAFETY CATALOGUE

667 LOW VOLTAGE CLAMPS

MPUE

Code 671112

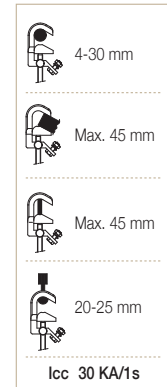
Dimensions: 335 x 81 x 52 mm
Weight: 0,6 kg



MPUL

Code 671113

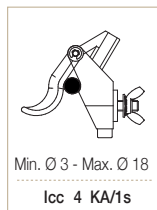
Dimensions: 335 x 81 x 52 mm
Weight: 1,2 kg



PEBT

Code 658115

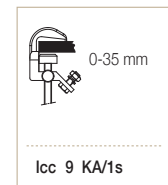
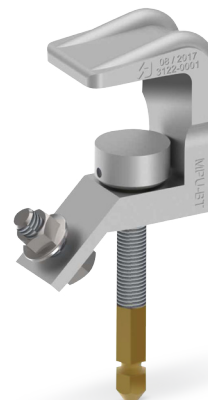
Dimensions: 815 x 58 x 40 mm
Weight: 0,35 kg



MPUBT

Code 659001P

Dimensions: 160 x 82 x 40 mm
Weight: 0,36 kg



Clamps' Information

Earthing and Short - Circuit Equipment

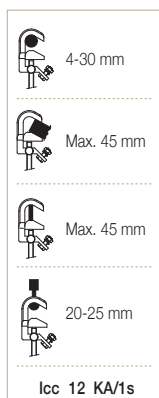
SAFETY CATALOGUE

667 MEDIUM VOLTAGE CLAMPS

MPUH

Code 671110

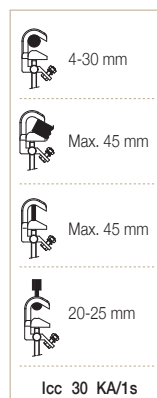
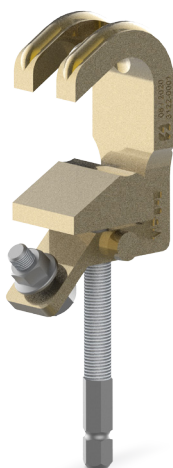
Dimensions: 202 x 81 x 40 mm
Weight: 0,48 kg



MPUH-L

Code 671117

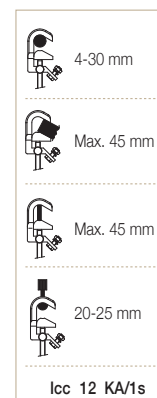
Dimensions: 110 x 81 x 40 mm
Weight: 1,16 kg



MPUB

Code 671115

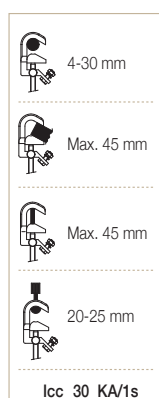
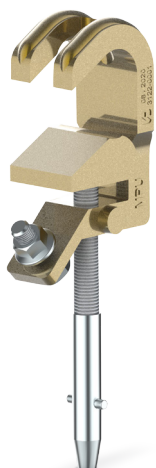
Dimensions: 240 x 81 x 40 mm
Weight: 0,53 kg



MPUB-L

Code 671118

Dimensions: 240 x 81 x 40 mm
Weight: 1,65 kg



PC

Code 666005

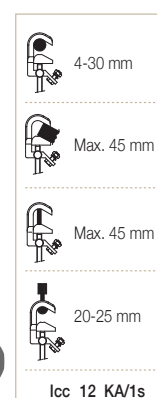
Dimensions: 440 x 157 x 54 mm
Weight: 1,3 kg



MPUP

Code 671116

Dimensions: 240 x 81 x 156 mm
Weight: 0,7 kg



Clamps' Information

Earthing and Short - Circuit Equipment

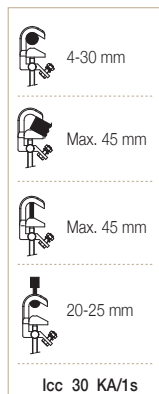
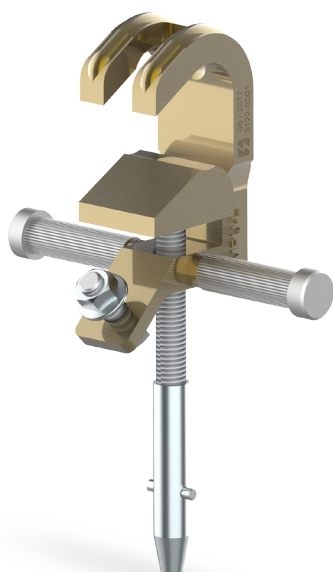
SAFETY CATALOGUE

667 MEDIUM VOLTAGE CLAMPS

MPUP-L

Code 671119

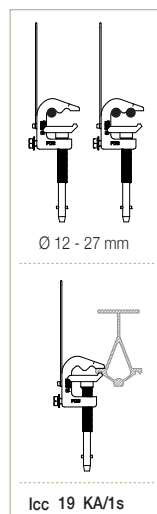
Dimensions: 240 x 81 x 156 mm
Weight: 1,34 kg



PDC

Code 666010

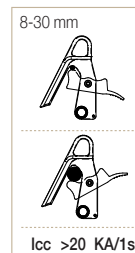
Dimensions: 413 x 105 x 52 mm
Weight: 0,85 kg



MCL

Code 671121

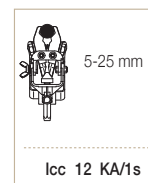
Dimensions: 182 x 128 x 68 mm
Weight: 0,67 kg



5014H

Code 671100

Dimensions: 167 x 91 x 83 mm
Weight: 0,8 kg



MC

Code 671120

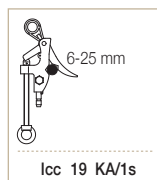
Dimensions: 226 x 102 x 62 mm
Weight: 0,4 kg



PCA-25

Code 671171

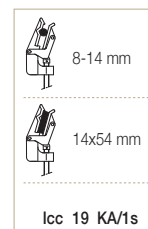
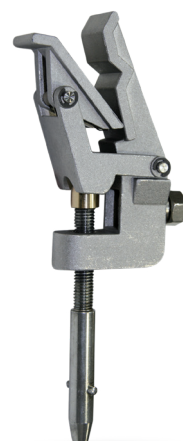
Dimensions: 276 x 123 x 74 mm
Weight: 0,81 kg



PP15

Code 671166

Dimensions: 241 x 95 x 47 mm
Weight: 0,68 kg



Clamps' Information

Earthing and Short - Circuit Equipment

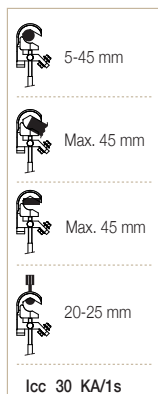
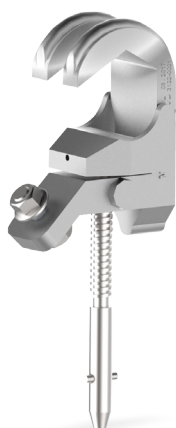
SAFETY CATALOGUE

667 HIGH VOLTAGE CLAMPS

MPL

Code 671172

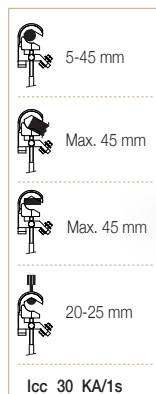
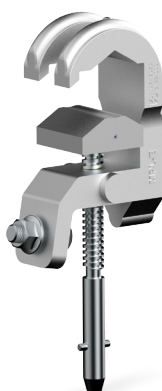
Dimensions: 263 x 105 x 62 mm
Weight: 0,97 kg



MPLE

Code 671178

Dimensions: 263 x 110 x 62 mm
Weight: 1 kg



MPLP

Code 671173

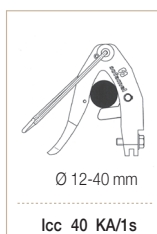
Dimensions: 263 x 105 x 204 mm
Weight: 1,1 kg



PAV-48

Code 673100

Dimensions: 380 x 170 x 120 mm
Weight: 1,6 kg



TML

Code 670100P

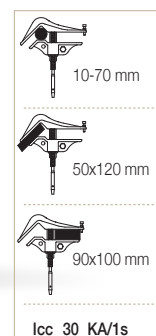
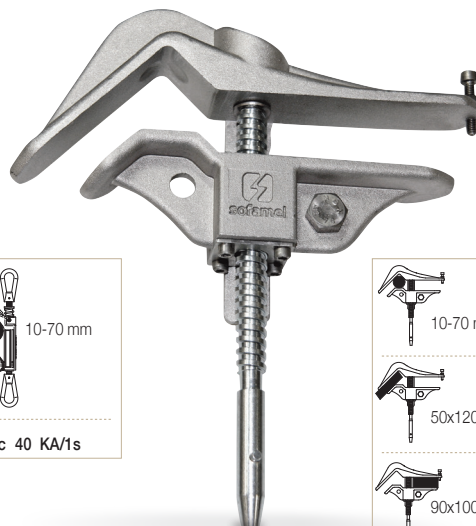
Dimensions: 428 x 133 x 53 mm
Weight: 1,56 kg



TMC

Code 675100P

Dimensions: 273 x 248 x 45 mm
Weight: 1,18 kg



Clamps' Information

Earthing and Short - Circuit Equipment

SAFETY CATALOGUE

667 HIGH VOLTAGE CLAMPS

PA40A

Code 674100 - Bayoneta
Code 674102 - Hexagonal

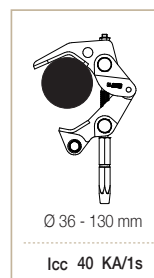
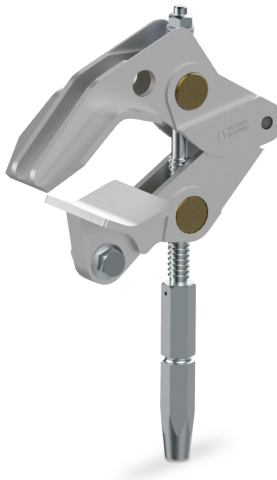
Dimensions: 331 x 206 x 80 mm
Weight: 1,7 kg



PA40ABP

Code 674105 - Hexagonal H22

Dimensions: 341 x 206 x 80 mm
Weight: 1,6 kg



667 HANDLES

EMB

Code 671106

Dimensions: 198 x Ø 52 mm
Weight: 0,3 kg



EMP

Code 659001E

Dimensions: 218 x Ø 52 mm
Weight: 0,25 kg

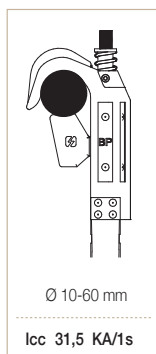


667 POTENTIAL DOWN CLAMP

BPGA

Code 672205

Dimensions: 3262 x 141 x 298 mm
Weight: 7,8 kg



Clamps' Information

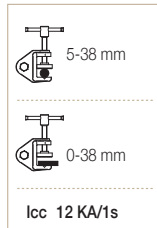
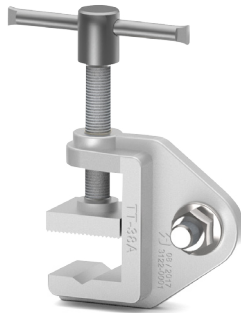
Earthing and Short - Circuit Equipment

SAFETY CATALOGUE

667 EARTHING LATHE

TT-38A

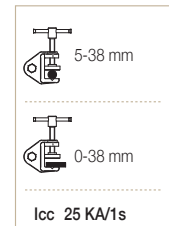
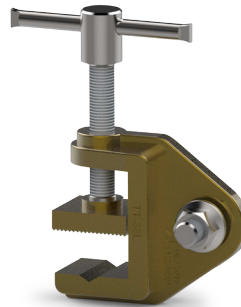
Code 671141



Dimensions: 158 x 92 x 35 mm
Weight: 0,48 kg

TT-38L

Code 671145

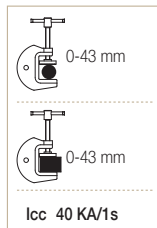
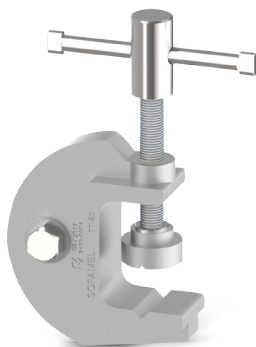


Dimensions: 158 x 92 x 35 mm
Weight: 0,93 kg

TT-50

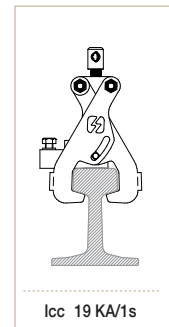
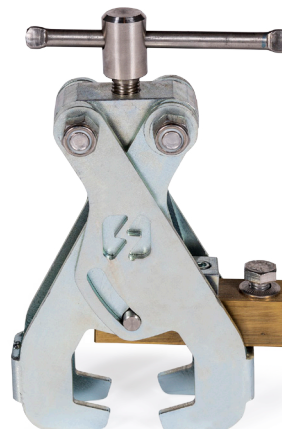
Code 671152

Dimensions: 250 x 147 x 40 mm
Weight: 0,95 kg



TTSR

Code 666015

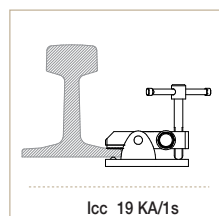


Dimensions: 280 x 214 x 55 mm
Weight: 3,45 kg

TTR

Code 671153

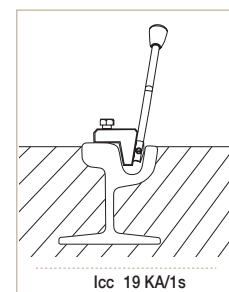
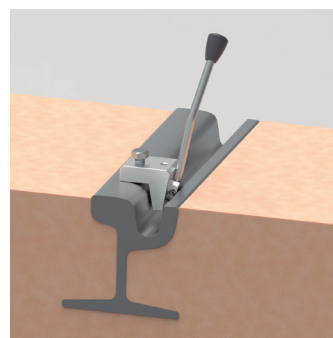
Dimensions: 115 x 117 x 60 mm
Weight: 1,1 kg



TTIR

Code

Dimensions: 54 x 65 x 50 mm
Weight: 0,95 kg



667 EARTHING LATHE

PEP

EQUIPOTENTIAL CLAMP FOR POST

Code P-671180

Dimensions: 420 x 202 x 70 mm

Weight: 4,5 kg



Max. Ø 400 mm



Min. Ø 90 mm



PEP-ECO

EQUIPOTENTIAL CLAMP FOR POST

Code P-671185

Dimensions: 325 x 200 x 60 mm

Weight: 3,7 kg



Max. Ø 400 mm



Min. Ø 90 mm



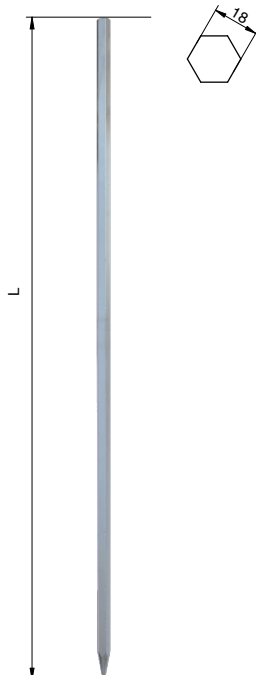
667 EARTHING ROD

HEXAGONAL EARTHING ROD

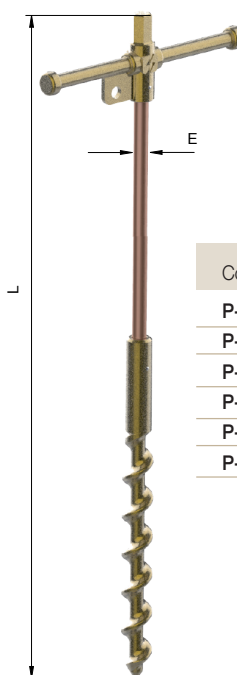
Code X-03.372.00

Dimensions: 1m

Weight: 2,150 g



HELICAL EARTHING ROD



Code	Ref.	L	ØE	Kg.
P-671190	PTB14-1000	1000		2,7
P-671191	PTB14-1300	1300	14,6	2,85
P-671192	PTB14-1500	1500		3
P-671193	PTB18-1000	1000		3,2
P-671194	PTB18-1300	1300	18,2	3,55
P-671195	PTB18-1500	1500		3,86

Clamps' Information

Earthing and Short - Circuit Equipment

SAFETY CATALOGUE

667 DISPENSER HEADS

PP-3

Code 671126



PP-4

Code 671127



PP-3U

Code 671128



PP-4U

Code 671129



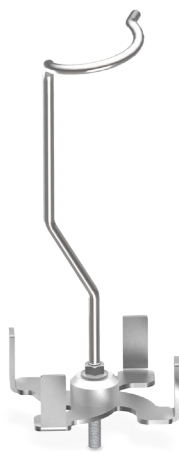
PP-3 MCL

Code 671131



PP-4 MCL

Code 671132



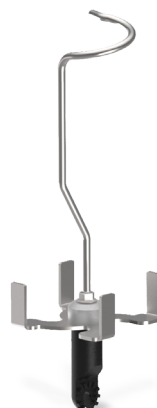
PP-3U MCL

Code 671122



PP-4U MCL

Code 671123



PP-1U MCL

Code 630168



Clamps' Information

Earthing and Short - Circuit Equipment

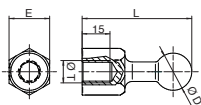
SAFETY CATALOGUE

668 FIXED BALL POINT FEMALE

According to DIN 48088 part 1.

Material: 20 micron tinned brass and stainless hardware.

668 STRAIGHT FIXED BALL POINT INTERNAL THREAD



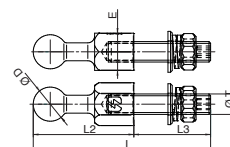
Code	Ref.	ØD	ICC Max. kA/1s	E	L	ØT
P-665020	PFRH-20M12	20	12	SW22	59	M12
P-665022	PFRH-20M16					M16
P-665024	PFRH-25M12	25	25	SW27	69	M12
P-665026	PFRH-25M16					M16

669 FIXED BALL POINT MALE

According to DIN 48088 part 1.

Material: 20 micron tinned brass and stainless hardware.

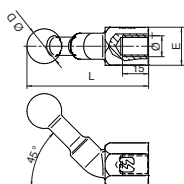
669 STRAIGHT FIXED BALL POINT EXTERIOR THREAD



Code	Ref.	ØD	ICC Max. kA/1s	E	L	L2	L3	ØT
P-665030	PFRM-20M12x35	20	12	SW22	94	35	M12	
P-665032	PFRM-20M12x45				104	45	M12	
P-665034	PFRM-20M16x35				94	35	M16	
P-665036	PFRM-20M16x45				104	45	M16	
P-665038	PFRM-25M12x35	25	25	SW27	104	35	M12	
P-665040	PFRM-25M12x45				114	45	M12	
P-665042	PFRM-25M16x35				104	35	M16	
P-665044	PFRM-25M16x45				114	45	M16	

668 FIX BALL POINT 45°

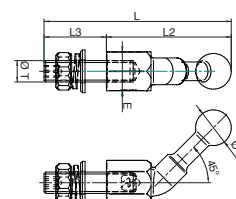
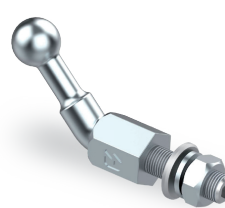
INTERNAL THREAD



Code	Ref.	ØD	ICC Max. kA/1s	E	L	ØT
P-665050	PF45H-20M12	20	12	SW22	70	M12
P-665052	PF45H-20M16				M16	
P-665054	PF45H-25M12	25	25	SW27	82	M12
P-665056	PF45H-25M16				M16	

669 FIX BALL POINT 45°

EXTERIOR THREAD



Code	Ref.	ØD	ICC Max. kA/1s	E	L	L2	L3	ØT
P-665060	PF45M-20M12x35	20	12	SW22	105	70	35	M12
P-665062	PF45M-20M16x45				115	45	M16	
P-665064	PF45M-25M12x45	25	25	SW27	127	82	45	M12
P-665066	PF45M-25M16x45				M16			

668 FIXED BALL POINT FEMALE

According to DIN 48088 part 1.

Material: 20 micron tinned brass and stainless hardware.

669 FIXED BALL POINT MALE

According to DIN 48088 part 1.

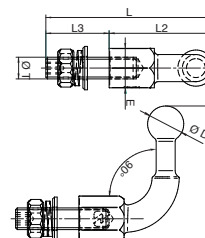
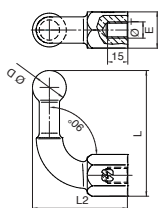
Material: 20 micron tinned brass and stainless hardware.

668 FIX BALL POINT 90°

INTERNAL THREAD

669 FIX BALL POINT 90°

EXTERIOR THREAD



Code	Ref.	ØD	ICC Max. kA/1s	E	L	L2	ØT
P-665070	PF90H-20M12	20	12	SW22	75	58	M12
P-665072	PF90H-20M16						M16
P-665074	PF90H-25M12	25	25	SW27	93	70	M12
P-665076	PF90H-25M16						M16

Code	Ref.	ØD	ICC Max. kA/1s	E	L	L2	L3	ØT
P-665080	PF90M-20M12x35	20	12	SW22	93	58	35	M12
P-665082	PF90M-20M16x45				103	58	45	M16
P-665084	PF90M-25M12x45	25	25	SW27	115	70	45	M12
P-665086	PF90M-25M16x45							M16

sofamel