



## BONELESS MEAT AND CHEDDAR CHEESE SLICER

### Powerful and easy to clean



Slices all types of cheese , including cheddar cheese and boneless meat

**R-300A  
MODEL**

- \* Powerful gear transmission
- \* Integrated knife sharpener
- \* Gravity feed
- \* 1/3 HP motor
- \* Anodized aluminum and stainless steel construction



# BONELESS MEAT AND CHEDDAR CHEESE SLICER R-300A MODEL



### SAVES TIME AND MONEY

Many parts in this slicer are easily disassembled with no tools, reducing the time spent on cleaning and maintenance cost.



### HYGIENIC

Anodized aluminum and stainless steel construction making it hygienic, corrosion resistant, easy to clean, allowing for an Excellent presentation.



### LONG LIFE WITH MINIMUM MAINTENANCE

The potent motor and its dependable nylon gear transmission allows the R-300 A fast and precise slices.

| Specifications:              |                             |
|------------------------------|-----------------------------|
| *Motor                       | 1/3 HP/0.25 KW single phase |
| Volts                        | 115/220 volts               |
| Hz                           | 50/60 Hz                    |
| Blade diameter               | 300 mm / 11.81" IN          |
| Speed blade                  | 380 RPM                     |
| Maximum cut width            | 0 - 25 mm/0 - 1" IN         |
| Maximum sliding table travel | 31.75 cm / 12.5" IN         |
| Net weight                   | 38 kg / 83.6 lb             |
| Shipping Weight              | 51 kg / 112.2 lb            |

\*Optional 220 volts/50 Hz

### GRAVITY FEED



45° Slant for true gravity feed allows free fall product feeding

### INTEGRATED KNIFE SHARPENER

It is very easy to use and keeps a perfect cutting edge, sharpening and honing the blade through its spinning stones



### SAFETY OPERATION

The blade has a metallic cover with a side protector to avoid accidents during cleaning and operation.



### SAFETY SWITCH

It also has a lighted switch that indicates when the motor is on, preventing accidents.

### CONSISTENCY IN CUTS

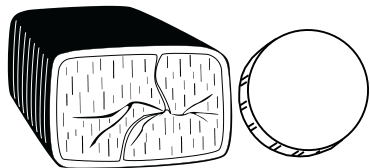
Graduated thickness gauge (0 to 14 mm / 0 to .47" ) to adjust thickness slices



### LONG LASTING BLADE

Highly resistant and long life

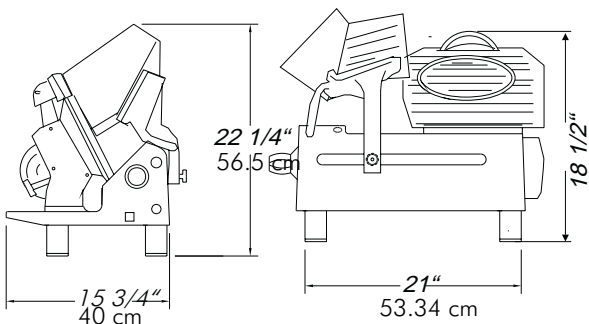
### MAXIMUM SLICING SIZE:



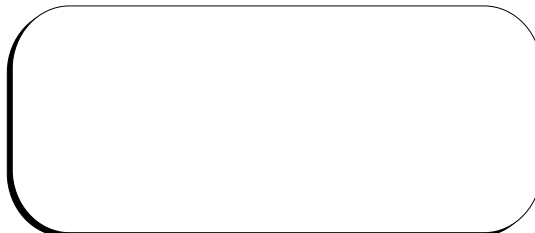
240 x 110 mm  
9.4" X 4.3" IN

190 mm ø  
7.5" IN ø

### DIMENSIONS



DISTRIBUTED BY



ALL INFORMATION IS SUBJECT TO CHANGE WITHOUT NOTICE